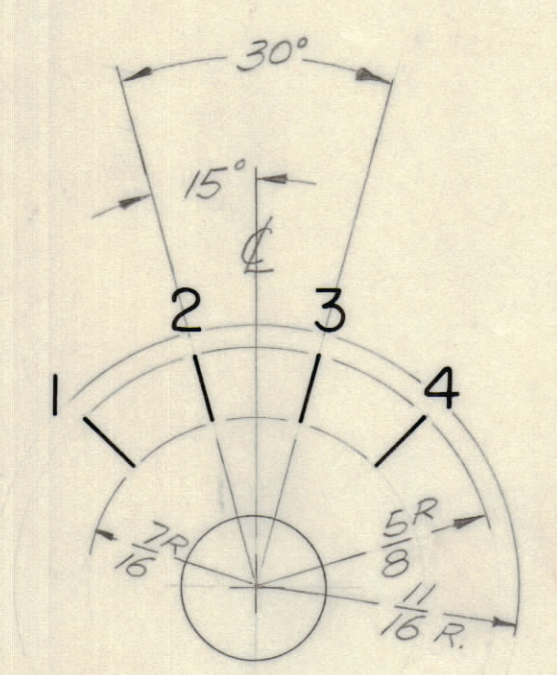
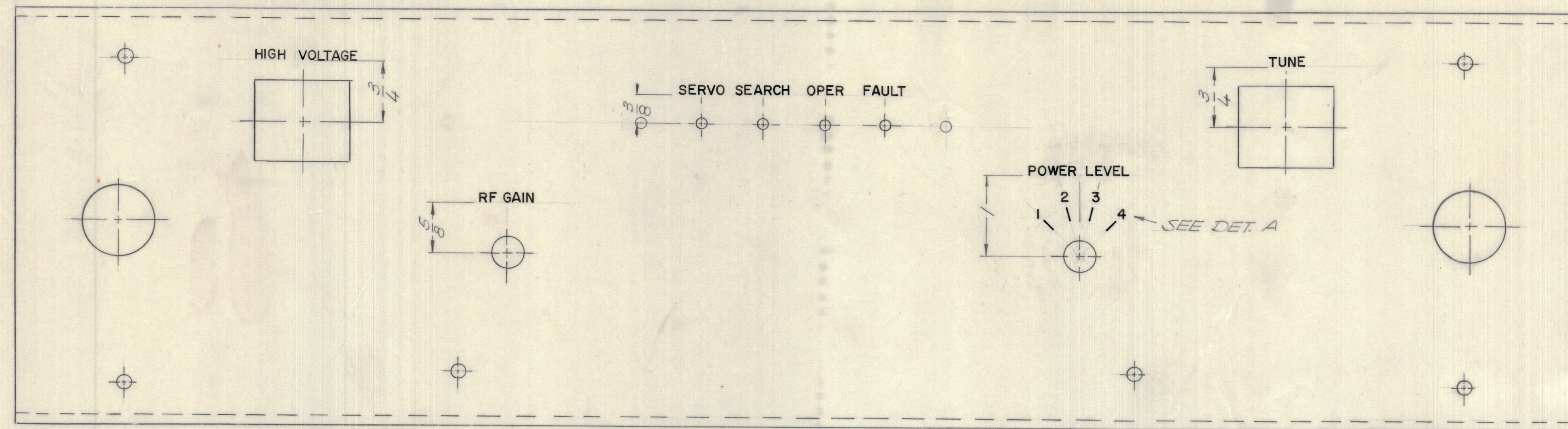


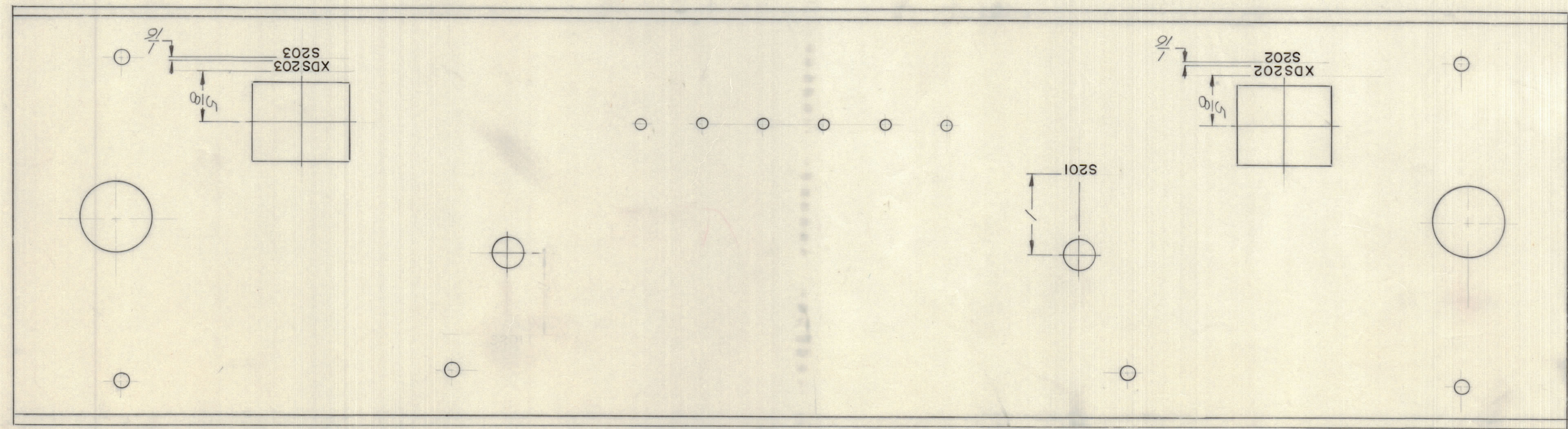
REVISIONS							
E.M.N.NO	DRAFT	CHKD	ZONE	LTR	DESCRIPTION	DATE	APPROVED
	U			8	ORIGINAL RELEASE FOR PRODUCTION	6/18/71	P.E.D.



DETAIL A

NOTE:
FRONT ONLY ENGRAVING PROCESS AS PER TMC SPEC S-566
LETTERING: 1/8 HIGH WHITE GOTHIC, LOCATED AS SHOWN

FRONT



MARKING PROCESS: AS PER TMC SPECIFICATION S727
LETTERING: 1/8 HIGH BLACK GOTHIC, LOCATED AS SHOWN

REAR

REF MS 6202

QTY. REQ.	ITEM	PART NO.	DESCRIPTION	SYMBOL
E. BUDETTI LIST OF MATERIAL				
FINAL APPROVAL		DATE	THE TECHNICAL MATERIEL CORP. MAMARONECK, NEW YORK ENGRAVING FRONT PNL.	
MECH. DES.		DATE		
ELECT-DES.		DATE		
CHECKED		DATE		
DRAWN		DATE		
MATERIAL		SIZE CODE IDENT NO. DWG NO.		ISSUE
FINISH		D 82679 LD 2468		1
		SCALE		SHEET OF

AX5130		
QTY / UNIT	MODEL USED ON	ASS'Y NO.
APPLICATION		
CODE		
NOTICE TO PERSONS RECEIVING THIS DRAWING THE TECHNICAL MATERIEL CORPORATION claims proprietary right in the material disclosed herein. This drawing is issued in confidence for engineering information only and may not be reproduced or used to manufacture anything shown hereon without permission from THE TECHNICAL MATERIEL CORPORATION to the user. This drawing is loaned for mutual assistance and is subject to recall at any time.		

D

C

B

A