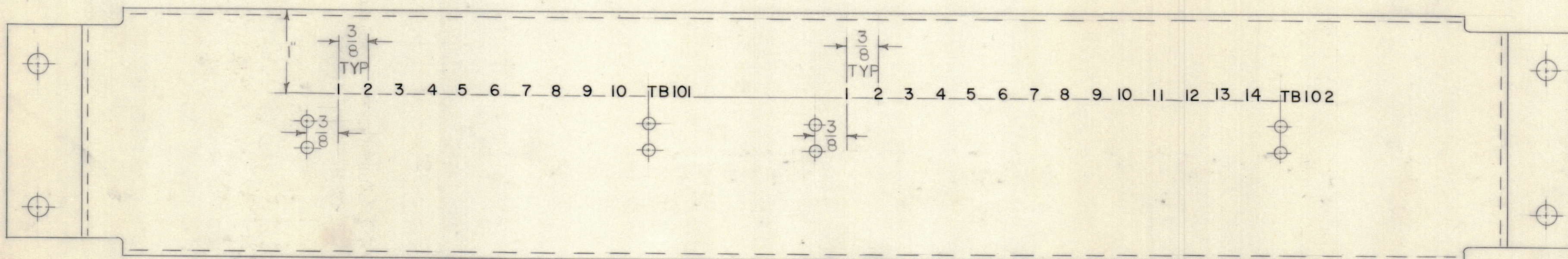


REVISIONS							
E.M.N.NO	DRAFT	CHKD	ZONE	LTR	DESCRIPTION	DATE	APPROVED
	RF			X	EXP RELEASE	7-7-71	
	W			Ø	ORIGINAL RELEASE FOR PRODUCTION	8/2/71	P.E.B.



MARKING PROCESS: AS PER TMC SPECIFICATION S727
 LETTERING: 1/8 HIGH BLACK GOTHIC, LOCATED AS SHOWN

REF: MS 5950

COR 4B		
QTY / UNIT	MODEL USED ON	ASS'Y NO.
APPLICATION		
CODE		

NOTICE TO PERSONS RECEIVING THIS DRAWING
 THE TECHNICAL MATERIEL CORPORATION claims proprietary right in the material disclosed hereon. This drawing is issued in confidence for engineering information only and may not be reproduced or used to manufacture anything shown hereon without permission from THE TECHNICAL MATERIEL CORPORATION to the user. This drawing is loaned for mutual assistance and is subject to recall at any time.

UNLESS OTHERWISE SPECIFIED DIMENSIONS ARE IN INCHES AND INCLUDE CHEMICALLY APPLIED OR PLATED FINISHES	
TOLERANCES ON	
DECIMALS	FRACTIONS
.X ± .05	± 1/64
.XX ± .01	ANGLES
.XXX ± .005	± 0° -30'
MATERIAL	
FINISH	

QTY. REQ.	ITEM	PART NO.	DESCRIPTION	SYMBOL
LIST OF MATERIAL				
FINAL APPROVAL: <i>[Signature]</i> DATE: <i>[Date]</i> MECH. DES. DATE: 7/14/71 ELECT. DES. DATE: <i>[Date]</i> CHECKED: <i>[Signature]</i> DATE: 7/14/71 DRAWN: R FORLANO DATE: 7-7-71				
THE TECHNICAL MATERIEL CORP. MAMARONECK, NEW YORK LETTERING, CHASSIS, INTERFACE				
SIZE	CODE	IDENT NO.	DWG NO.	ISSUE
C	82679		LD 2474	Ø
SCALE 1/1				SHEET 1 OF 1

LD 2474