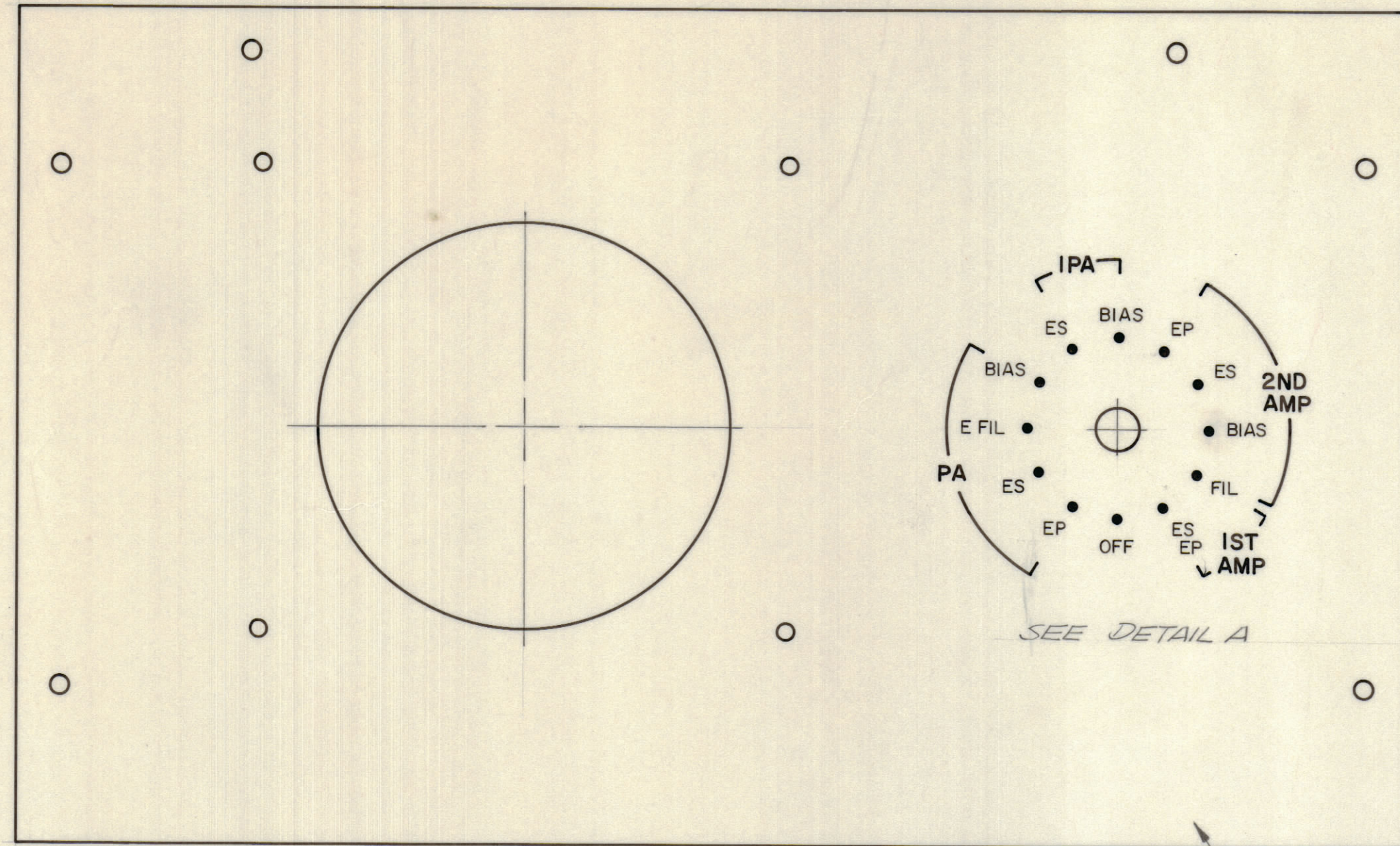
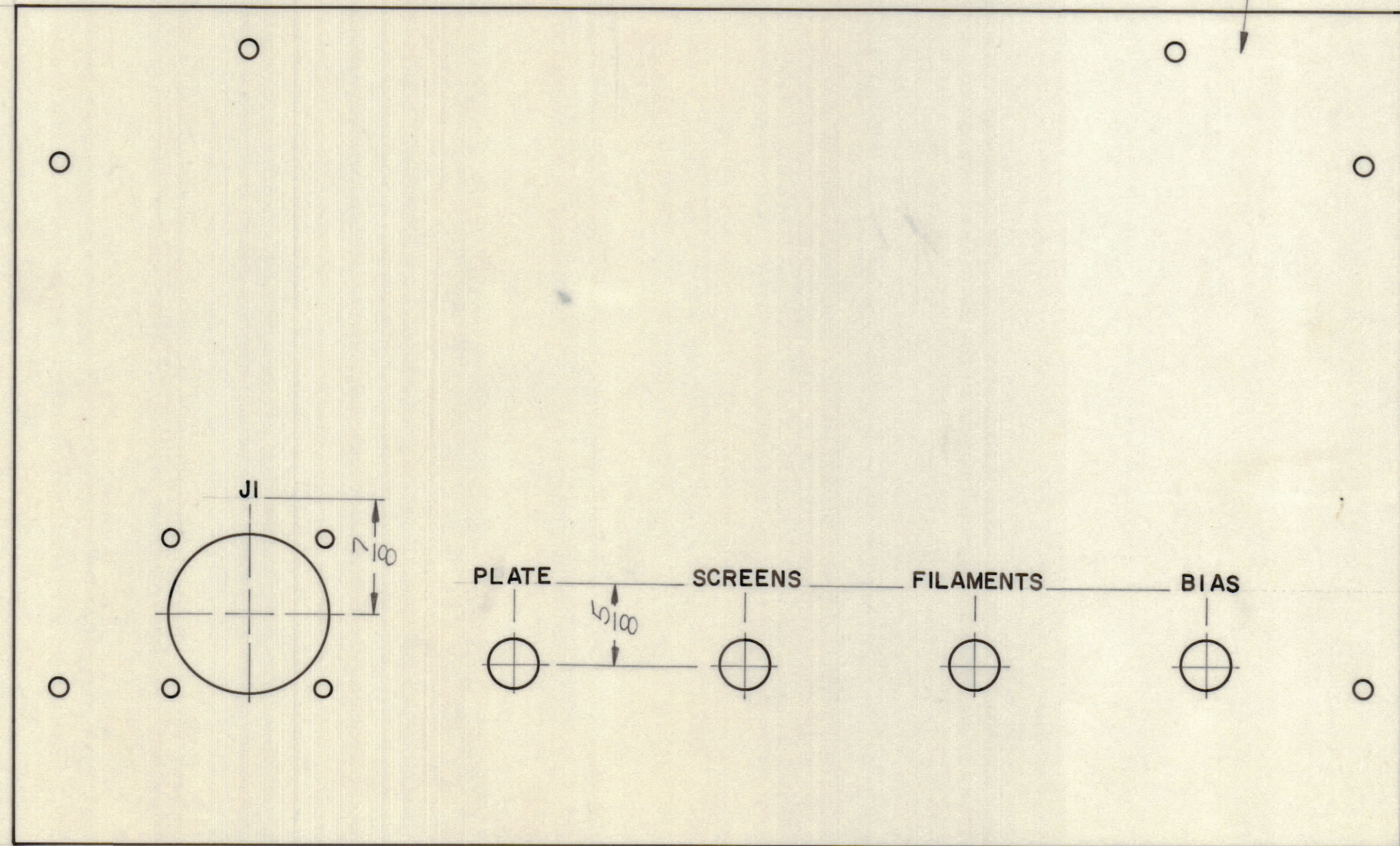


REVISIONS							
E.M.N.O.	DRAFT	CHKD	ZONE	LTR	DESCRIPTION	DATE	APPROVED
	0			Ø	ORIGINAL RELEASE FOR PRODUCTION	9/5/71	

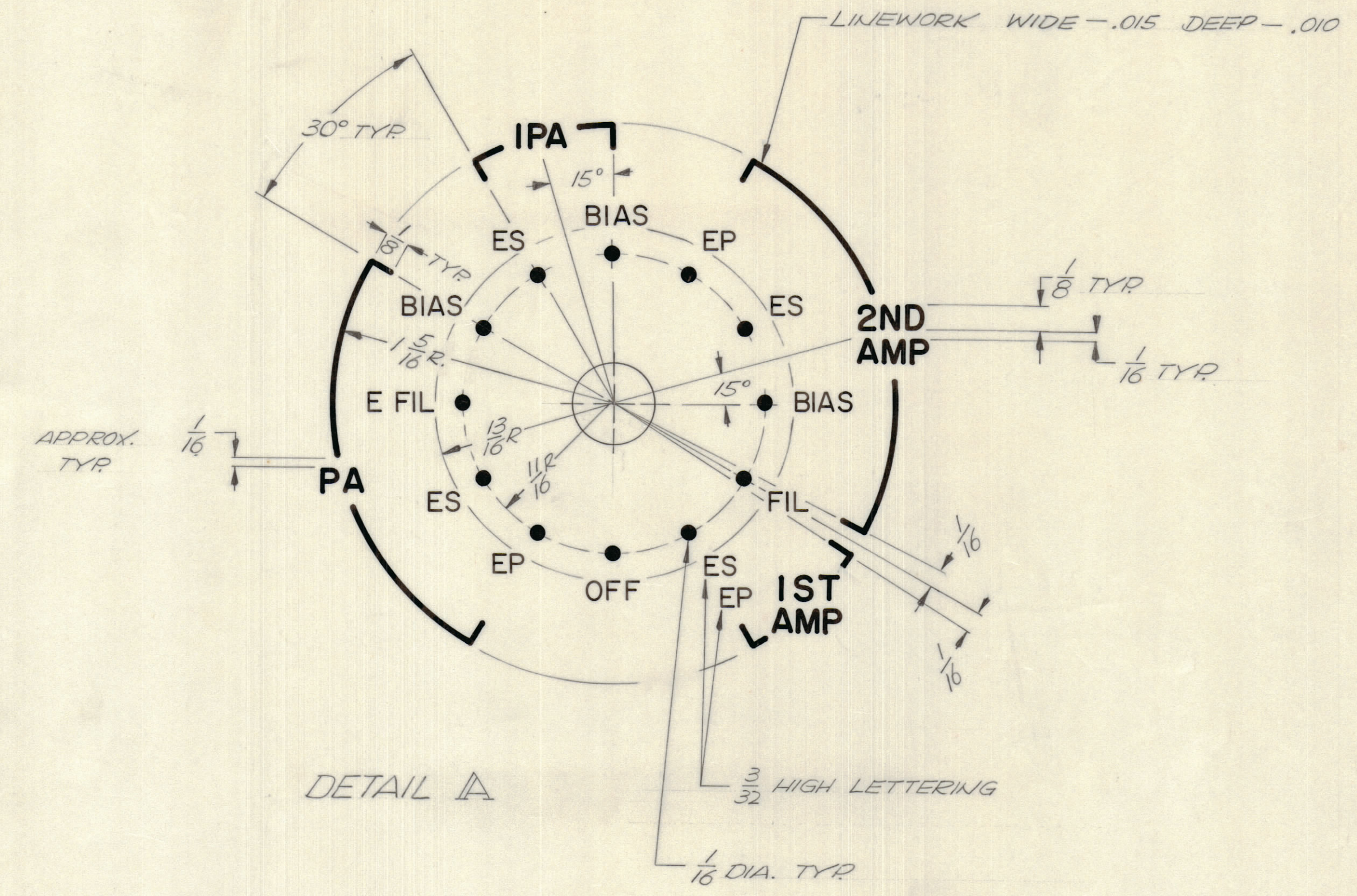


LD 2478-1 FRONT PLATE

MARK TMC PART NUMBER
1/8 HIGH GOTHIC WITH LATEST
REVISION LETTER ON REAR OF PANEL



LD 2478-2 REAR PLATE



DETAIL A

ENGRAVING PROCESS: AS PER TMC SPECIFICATION S566
LETTERING: 1/8 HIGH WHITE GOTHIC, LOCATED AS SHOWN UNLESS OTHERWISE SPECIFIED

LD 2478-2 REF MS 6218
LD 2478-1 REF MS 6219

QTY / UNIT	MODEL USED ON	ASS'Y NO.
1	HET 1-10K	KIT 372
APPLICATION		
CODE		
NOTICE TO PERSONS RECEIVING THIS DRAWING		
THE TECHNICAL MATERIEL CORPORATION claims proprietary right in the material disclosed herein. This drawing is issued in confidence for engineering information only and may not be reproduced or used to manufacture anything shown herein without permission from THE TECHNICAL MATERIEL CORPORATION to the user. This drawing is loaned for mutual assistance and is subject to recall at any time.		

QTY. REQ.	ITEM	PART NO.	DESCRIPTION	SYMBOL
	LIST OF MATERIAL			
	THE TECHNICAL MATERIEL CORP. MAMARONECK, NEW YORK			
	MARKING FRONT & REAR PNL			
	SIZE	CODE IDENT NO.	DWG NO.	ISSUE
	D	82679	LD 2478	Ø
SCALE		SHEET OF		