

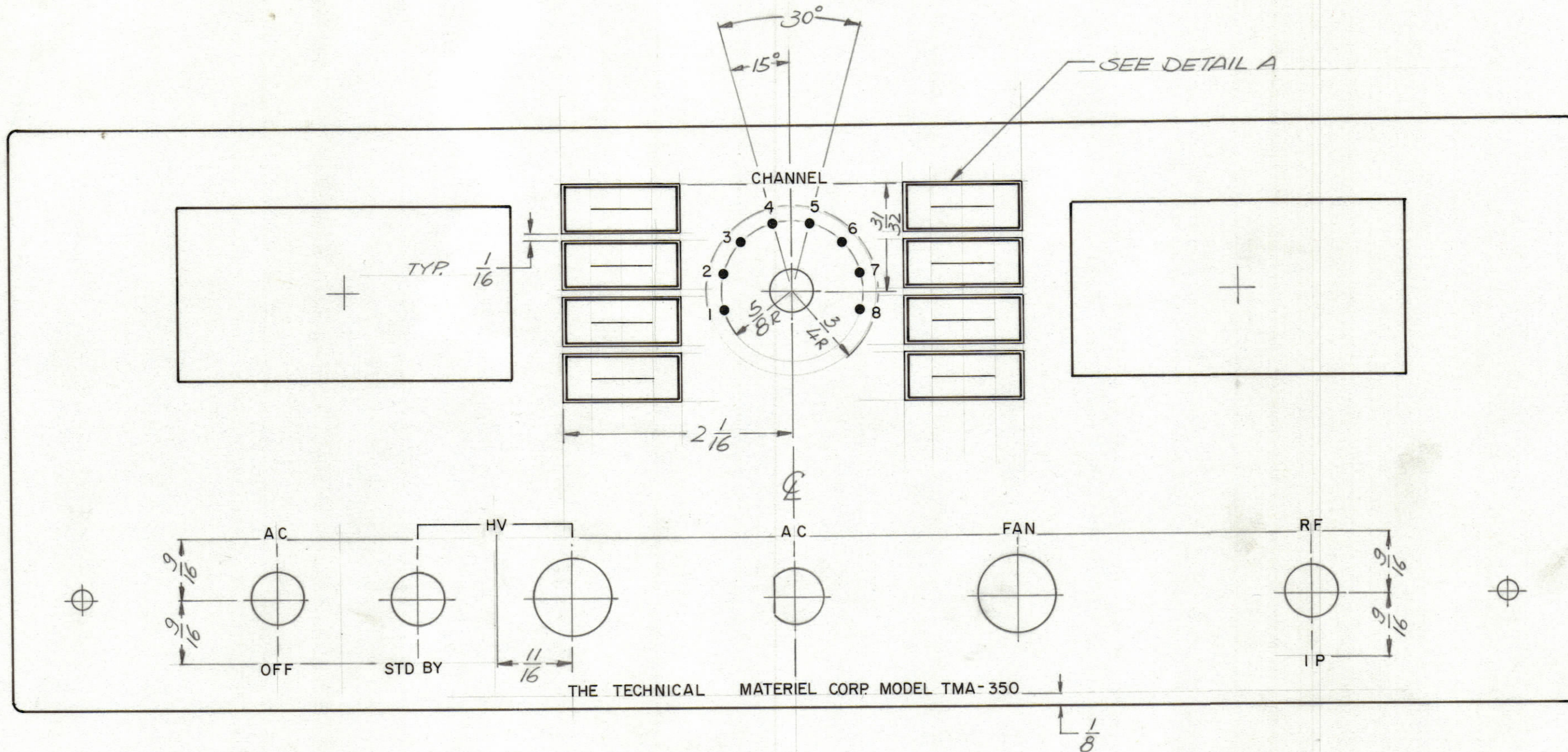
4

3

2

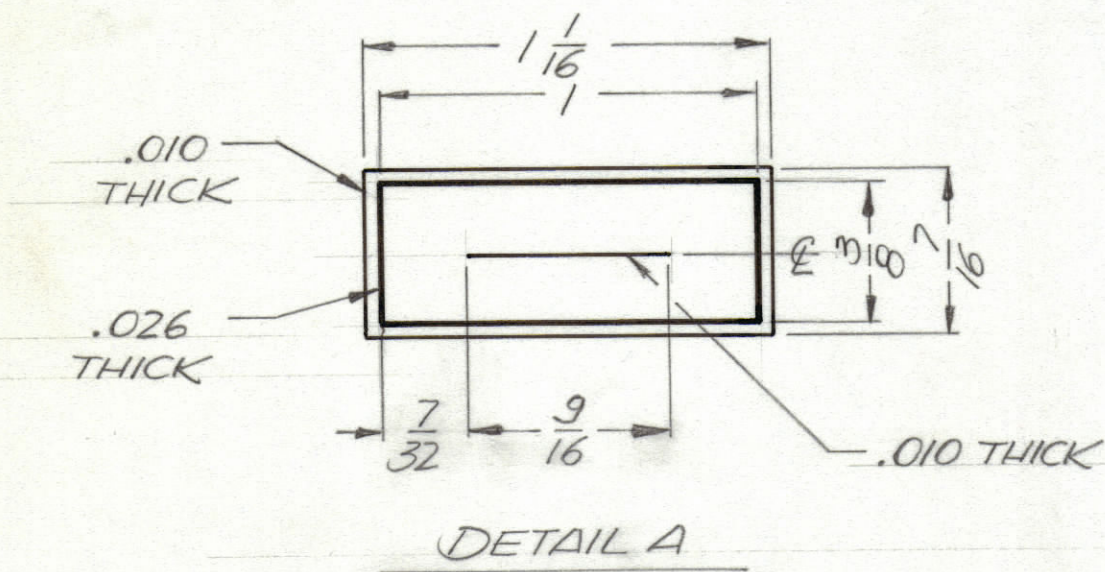
1

REVISIONS						
ZONE	LTR	DESCRIPTION	DATE	E.M.N.NO	DRAFT	CHKD APPD
	Ø	ORIGINAL RELEASE FOR PRODUCTION	10-20-72		EF	



FRONT VIEW

MARKING PROCESS: AS PER TMC SPECIFICATION S727
 LETTERING: 3/32 HIGH BLACK GOTHIC, LOCATED AS SHOWN
 ALL DOTS 1/16 DIA.



DETAIL A

$\frac{14}{32} = \frac{7}{16}$

1	TMA 350	
QTY / UNIT	MODEL USED ON	ASS'Y NO.
APPLICATION		
CODE		

NOTICE TO PERSONS RECEIVING THIS DRAWING
 THE TECHNICAL MATERIEL CORPORATION claims proprietary right in the material disclosed herein. This drawing is issued in confidence for engineering information only and may not be reproduced or used to manufacture anything shown hereon without permission from THE TECHNICAL MATERIEL CORPORATION to the user. This drawing is loaned for mutual assistance and is subject to recall at any time.

REF MS 6403
 UNLESS OTHERWISE SPECIFIED DIMENSIONS ARE IN INCHES AND INCLUDE CHEMICALLY APPLIED OR PLATED FINISHES
TOLERANCES ON
 DECIMALS: .X ± .05, .XX ± .01, .XXX ± .005
 FRACTIONS: ± 1/64, ANGLES: ± 0° -30'

QTY. REQ.	ITEM	PART NO.	DESCRIPTION	SYMBOL
LIST OF MATERIAL				
THE TECHNICAL MATERIEL CORP. MAMARONECK, NEW YORK				
MARKING PANEL FRONT				
MATERIAL		SIZE CODE IDENT.NO		ISSUE
FINISH		DWG NO.		
		C 82679	LD 2530	Ø
SCALE 1:1			SHEET 1 OF 1	

D

C

B

A

D

C

B

A

LD 2530