

5

4

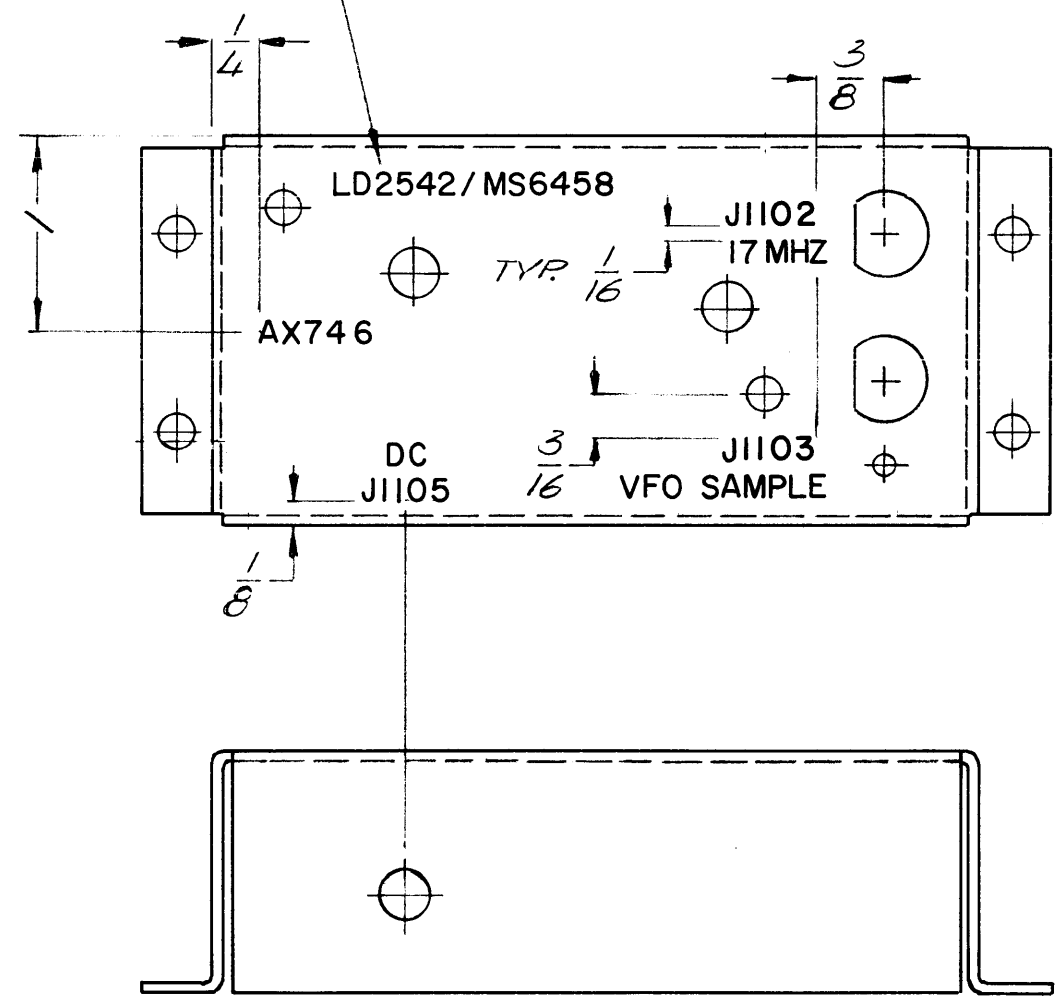
3

2

1

REVISIONS							
E.M.N. NO.	DRAFT	CHKD	ZONE	LTR	DESCRIPTION	DATE	APPROVED
	Q			Ø	ORIGINAL RELEASE FOR PROD	3/23/73	

MARK TMC PART NUMBER  
1/8 HIGH GOTHIC WITH LATEST  
REVISION LETTER



MARKING PROCESS: AS PER TMC SPECIFICATION S727  
LETTERING: 1/8 HIGH BLACK GOTHIC, LOCATED AS SHOWN

KIT 375		AX 746	
QTY / UNIT	MODEL USED ON	ASS'Y NO.	
APPLICATION			
CODE			

**NOTICE TO PERSONS RECEIVING THIS DRAWING**  
THE TECHNICAL MATERIEL CORPORATION claims proprietary right in the material disclosed hereon. This drawing is issued in confidence for engineering information only and may not be reproduced or used to manufacture anything shown hereon without permission from THE TECHNICAL MATERIEL CORPORATION to the user. This drawing is loaned for mutual assistance and is subject to recall at any time.

REF MS 6458

UNLESS OTHERWISE SPECIFIED DIMENSIONS ARE IN INCHES AND INCLUDE CHEMICALLY APPLIED OR PLATED FINISHES	
DECIMALS .X ± .05 .XX ± .01 .XXX ± .005	FRACTIONS 1/64 ANGLES 0° -30'
MATERIAL	
FINISH	

REQ'D	ITEM	PART NUMBER	DESCRIPTION	SYM.
F.B. LIST OF MATERIAL				
FINAL APPROVAL		DATE	THE TECHNICAL MATERIEL CORP.	
MECH. DES.		DATE	MAMARONECK, NEW YORK	
ELECT. DES.		DATE	MARKING DIAGRAM	
CHECKED		DATE	17 MHZ SWITCHING BOX	
DRAWN		DATE	SIZE	CODE IDENT. NO.
			B	82679
			DWG NO.	LD 2542
			ISSUE	Ø
SCALE			SHEET	OF

5

4

3

2

1