

IF IT IS FOUND DESIRABLE TO CHANGE ANY TOLERANCE OR OTHER DETAIL SPECIFIED ON THIS DRAWING NOTIFY THE PURCHASER PROMPTLY.

MAXIMUM ALLOWABLE TOLERANCES HAVE BEEN DETERMINED AND DEVIATIONS WILL BE CAUSE FOR REJECTION. REMOVE ALL BURRS AND SHARP EDGES

NOTICE TO PERSONS RECEIVING THIS DRAWING

THE TECHNICAL MATERIEL CORPORATION claims proprietary right in the material disclosed hereon. This drawing is issued in confidence for engineering information only and may not be reproduced or used to manufacture anything shown hereon without permission from THE TECHNICAL MATERIEL CORPORATION to the user. This drawing is loaned for mutual assistance and is subject to recall at any time.

Property of:  
THE TECHNICAL MATERIEL CORPORATION  
MAMARONECK, NEW YORK

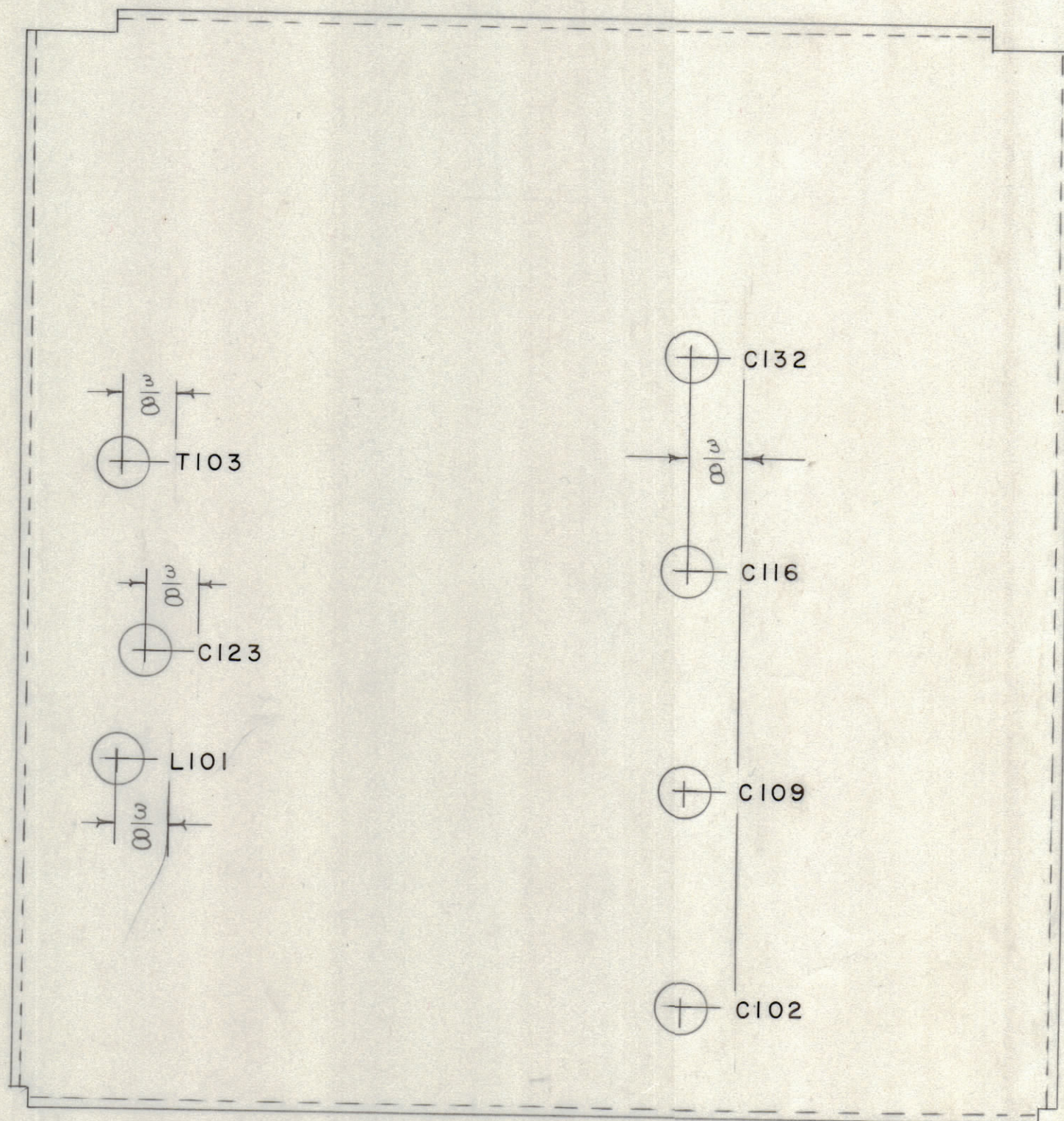
BAND	BOTTOM COVER LETTERING						
1	C102	C109	C116	C123	C132	L101	T103
2	C202	C209	C216	C223	C232	L201	T203
3	C302	C309	C316	C323	C332	L301	T303

NOMENCLATURE TO BE AS FOLLOWS:

LD-316 - 1

TMC DWG. NO. BAND

THIS DRAWING IS KEYED TO BAND 1



BOTTOM COVER

LD-316

REF. DWGS. A-1256 & A-1298

REQ. ITEM	PART NO.	DESCRIPTION	SYMBOL
		THE TECHNICAL MATERIEL CORP. MAMARONECK, NEW YORK	
STOCK SIZE		LETTERING, BTM. COVER	
MATERIAL		FFRD-1-2-3	
WEIGHT PER PC.			
TYPE & TEMPER		CDD	PLX
HEAT TREAT. SPEC.		DRAWN	ELEC. DES. APP. MECH. DES. APP.
FINISH & SPEC. NO.		CHECKED	FINAL APPROVAL
		USED FOR LD-270	LD-316

ISSUE	ITEM	CHANGED FROM	DATE	CN. NO.	DRAFTS	CHECKER	ENG. APP.
TOLERANCES							
ALL OTHERS		DEC. DIM. $\pm$ FRAC. DIM. $\pm 1/32$ ANGULAR DIM. $\pm$	SCALE:				
DRILL, PUNCH, COMMERCIAL STOCK SIZES AND MANUFACTURERS TOLERANCES ARE NOT INCLUDED.							

REQ. PER UNIT	MODEL	PROJECT NO.	ASSY. NO.	DATE
	FFRD-1-2-3	458		11-20-56
USED ON				