

5

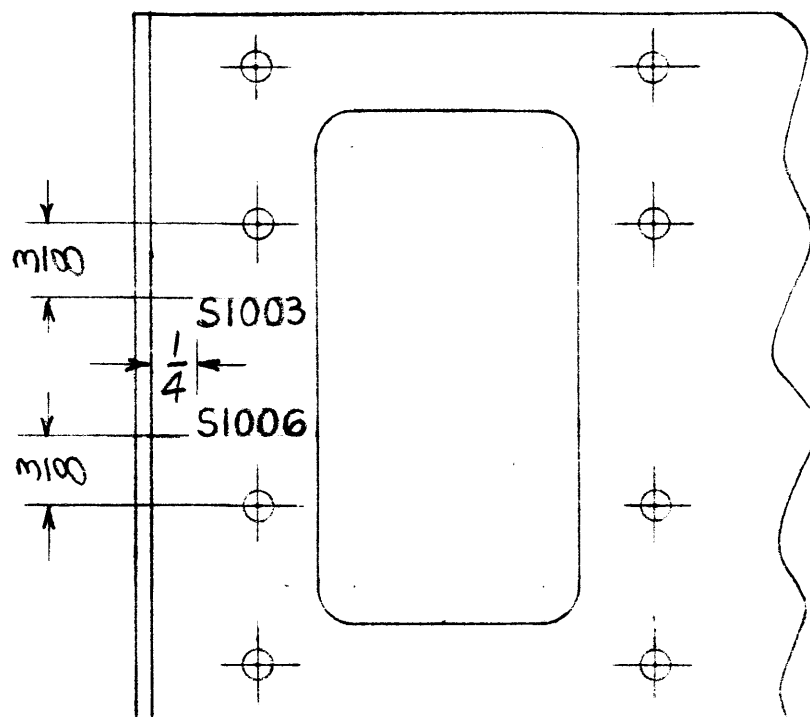
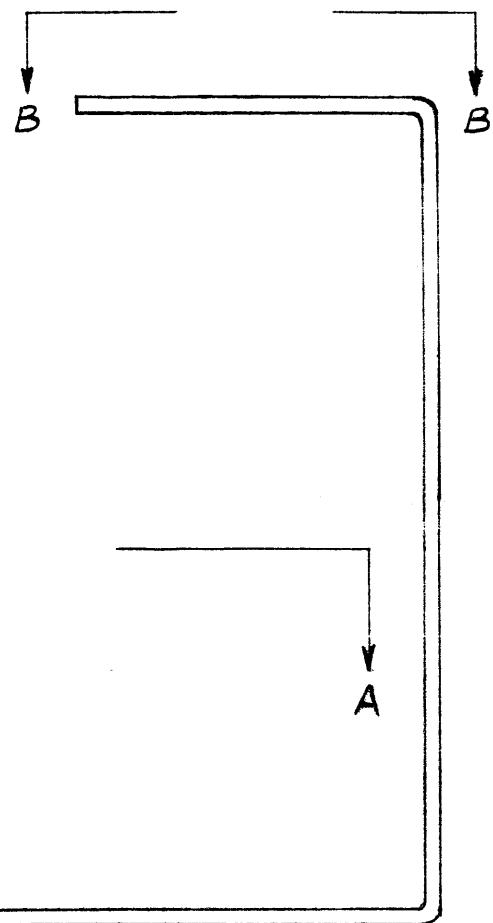
4

3

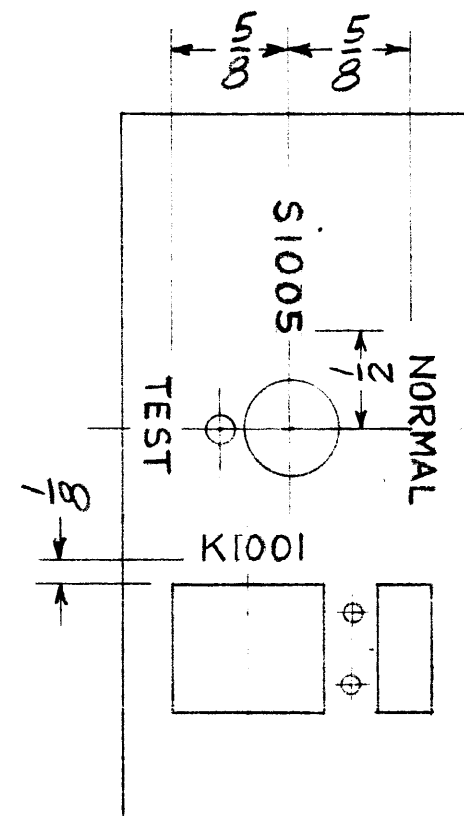
2

1

REVISIONS						
ZONE	LTR	DESCRIPTION	DATE	E.M.N.NO	DRAFT	CHKD APPD
	<i>F</i>	ORIGINAL RELEASE	5/9/73		CS	



VIEW A-A



VIEW B-B

MARKING PROCESS: AS PER TMC SPECIFICATION S727
 LETTERING: 1/8 HIGH BLACK GOTHIC, LOCATED AS SHOWN

REQ'D	ITEM	PART NUMBER	DESCRIPTION	SYM.
LIST OF MATERIAL				
THE TECHNICAL MATERIEL CORP. MAMARONECK, NEW YORK				
<i>MARKING, BRACKET MOUNTING</i> <i>AUTO. SWITCH</i>				
SIZE		CODE IDENT. NO.	DWG NO.	ISSUE
B		82679	LD3003	<i>⊕</i>
SCALE			SHEET OF	

<i>CMRA-4</i>		
QTY / UNIT	MODEL USED ON	ASS'Y NO.
APPLICATION		
CODE		

NOTICE TO PERSONS RECEIVING THIS DRAWING
 THE TECHNICAL MATERIEL CORPORATION claims proprietary right in the material disclosed hereon. This drawing is issued in confidence for engineering information only and may not be reproduced or used to manufacture anything shown hereon without permission from THE TECHNICAL MATERIEL CORPORATION to the user. This drawing is loaned for mutual assistance and is subject to recall at any time.

UNLESS OTHERWISE SPECIFIED DIMENSIONS ARE IN INCHES AND INCLUDE CHEMICALLY APPLIED OR PLATED FINISHES		FINAL APPROVAL <i>D.A.C.</i>	DATE
DECIMALS	FRACTIONS	ELECT. DES.	DATE
.X ± .05	TOLS. 1/64	CHECKED	DATE
.XX ± .01	ANGLES 0°-30'	DRAWN <i>D.A.C.</i>	DATE
.XXX ± .005			
MATERIAL			
FINISH			

(10-66)

5

4

3

2

LD3003 1