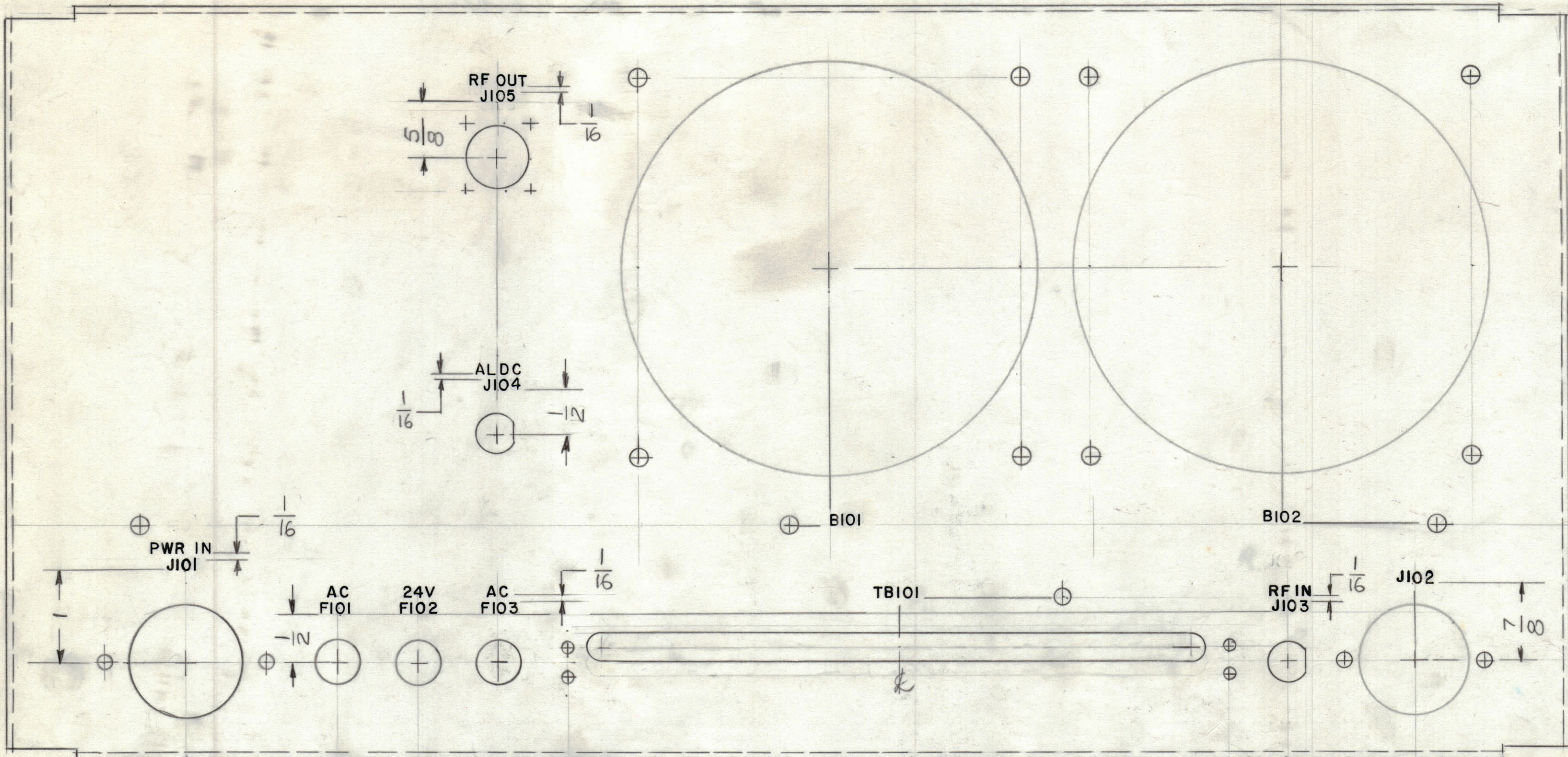


REVISIONS							
ZONE	LTR	DESCRIPTION	DATE	E.M.N.NO	DRAFT	CHKD	APPD
	X	MARKING J101-J104 RELOCATED	6-17-74		C.O.L		
	Ø	ORIGINAL RELEASE FOR PRODUCTION	3-13-75		CL		



MARKING PROCESS: AS PER TMC SPECIFICATION S727
 LETTERING: 1/8 HIGH BLACK GOTHIC, LOCATED AS SHOWN

REF: MS 6537

1	TMA-1K	BMA-520
QTY / UNIT	MODEL USED ON	ASS'Y NO.
APPLICATION		
CODE		
<small>NOTICE TO PERSONS RECEIVING THIS DRAWING</small> <small>THE TECHNICAL MATERIEL CORPORATION claims proprietary right in the material disclosed hereon. This drawing is issued in confidence for engineering information only and may not be reproduced or used to manufacture anything shown hereon without permission from THE TECHNICAL MATERIEL CORPORATION to the user. This drawing is loaned for mutual assistance and is subject to recall at any time.</small>		

UNLESS OTHERWISE SPECIFIED DIMENSIONS ARE IN INCHES AND INCLUDE CHEMICALLY APPLIED OR PLATED FINISHES

TOLERANCES ON

DECIMALS	FRACTIONS
.X ± .05	± 1/64
.XX ± .01	ANGLES
.XXX ± .005	± 0° -30'

QTY. REQ.	ITEM	PART NO.	DESCRIPTION	SYMBOL
LIST OF MATERIAL				
THE TECHNICAL MATERIEL CORP. MAMARONECK, NEW YORK				
MARKING, REAR PLATE				
MATERIAL		SIZE CODE IDENT.NO. DWG NO.		ISSUE
FINISH		C 82679 LD 3025		Ø
SCALE 1:1			SHEET OF	

FINAL APPROVAL	DATE
<i>CSB</i>	3/13/75
MECH. DES.	DATE
F. IANNUZZI	12-13-74
ELECT. DES.	DATE
CHECKED	DATE
F. IANNUZZI	12-14-74
DRAWN	DATE
<i>g de luca</i>	

LD03025