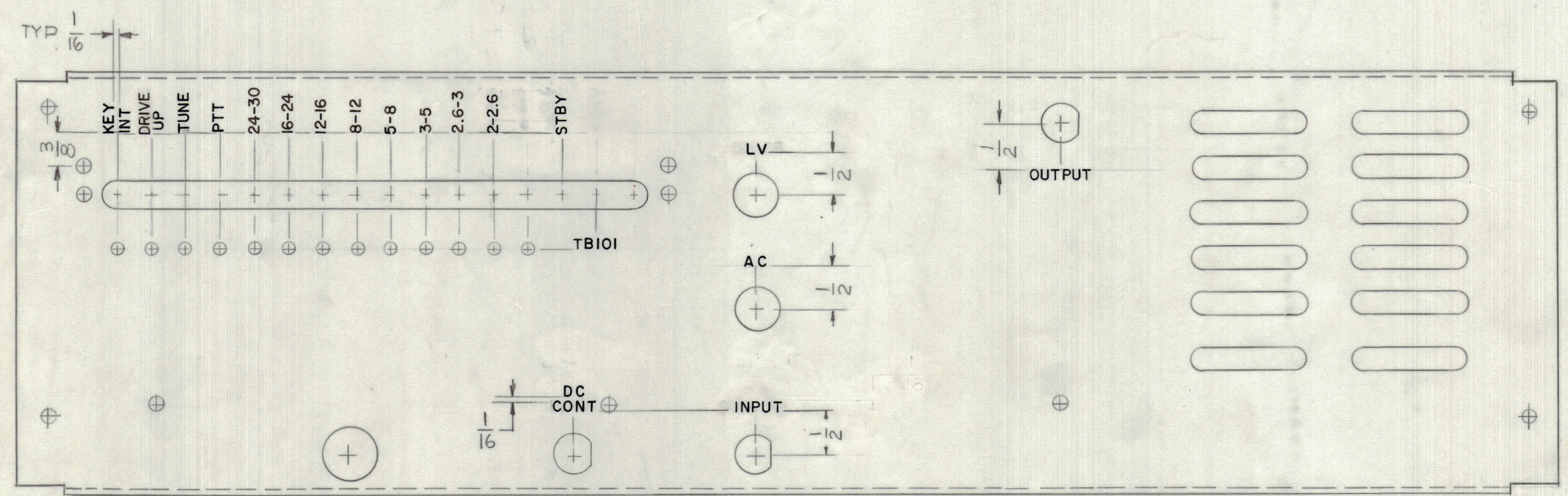


REVISIONS							
E.M.N.O.	DRAFT	CHKD	ZONE	LTR	DESCRIPTION	DATE	APPROVED
				X	EXPER. RELEASE		
				X1	MARKING "LV WAS "SPARE"	10-25-74	
				X3	MARKING "DC CONT" & "INPUT" REVISED	11-18-74	
				X4	MARKING STBY ADDED	11-23-74	
	Q			Ø	ORIGINAL RELEASE FOR PRODUCTION	1/2/75	



MARKING PROCESS: AS PER TMC SPECIFICATION S727  
 LETTERING: 1/8 HIGH BLACK GOTHIC, LOCATED AS SHOWN

REF: MS6549

1	HFL-100	
QTY / UNIT	MODEL USED ON	ASS'Y NO.
APPLICATION		
CODE		
<small>NOTICE TO PERSONS RECEIVING THIS DRAWING</small> <small>THE TECHNICAL MATERIEL CORPORATION claims proprietary right in the material disclosed hereon. This drawing is issued in confidence for engineering information only and may not be reproduced or used to manufacture anything shown hereon without permission from THE TECHNICAL MATERIEL CORPORATION to the user. This drawing is loaned for mutual assistance and is subject to recall at any time.</small>		

QTY. REQ.	ITEM	PART NO.	DESCRIPTION	SYMBOL
LIST OF MATERIAL				
FINAL APPROVAL		DATE	<b>THE TECHNICAL MATERIEL CORP.</b> MAMARONECK, NEW YORK	
MECH. DES.		DATE		
ELECT. DES.		DATE		
CHECKED		DATE		
DRAWN		DATE	MARKING REAR PLATE	
MATERIAL		DATE		
FINISH		DATE	SIZE CODE IDENT NO. DWG NO. ISSUE <b>D 82679 LD3027</b>	
SCALE 1:1		DATE		
			SHEET OF	

LD3027