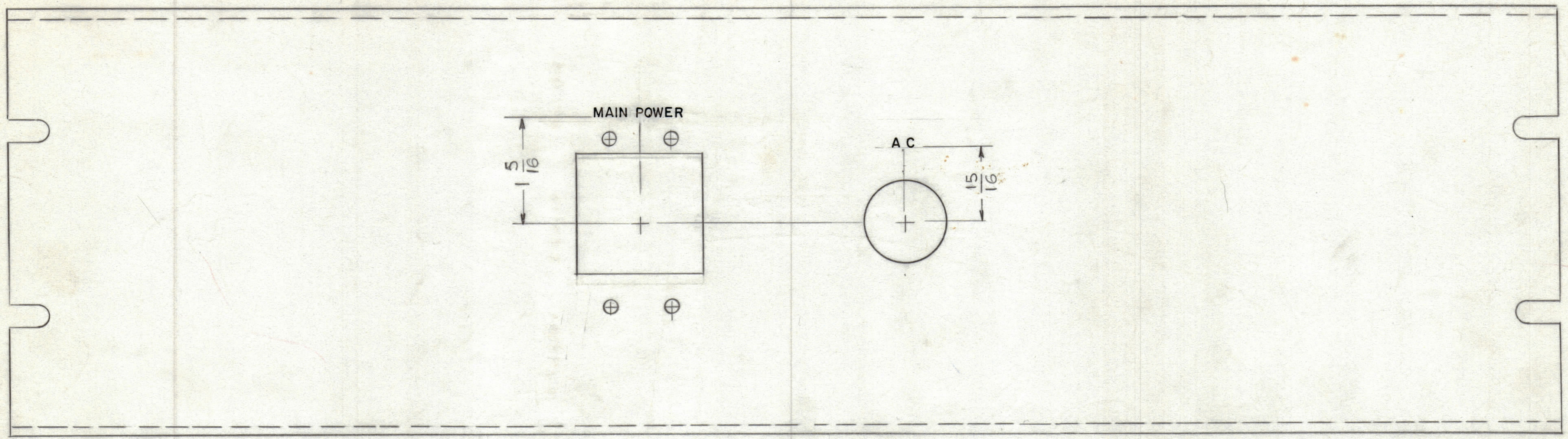


ENGINEERING SKETCH NOT FOR PRODUCTION

REVISIONS						
ZONE	LTR	DESCRIPTION	DATE	E.M.N.NO	DRAFT	CHKD APPD
	X	EXP RELEASE				
	Ø	ORIGINAL RELEASE FOR PRODUCTION	6/16/75		CL	



HEIGHT OF LETTER	DEPTH OF STROKE	WIDTH OF STROKE
1/8	.010	.020

SILK SCREEN OR ENGRAVING TO BE USED,
AS PER JOB REQUIREMENT

- UNLESS OTHERWISE SPECIFIED -
- 1- ALL LETTERING GROUP TO BE CENTERED ON HOLES .
 - 2- ENGRAVING TO BE 1/8 HIGH GOTHIC.
 - 3- ALL LETTERING TO BE WHITE FILLED.
 - 4- ALL ENGRAVING AS PER TMC SPEC. 5566

REF: MS 6580

1	GPTA 1K-J	
QTY / UNIT	MODEL USED ON	ASS'Y NO.
APPLICATION		
	CODE	

NOTICE TO PERSONS RECEIVING THIS DRAWING
 THE TECHNICAL MATERIEL CORPORATION claims proprietary right in the material disclosed hereon. This drawing is issued in confidence for engineering information only and may not be reproduced or used to manufacture anything shown hereon without permission from THE TECHNICAL MATERIEL CORPORATION to the user. This drawing is loaned for mutual assistance and is subject to recall at any time.

UNLESS OTHERWISE SPECIFIED DIMENSIONS ARE IN INCHES AND INCLUDE CHEMICALLY APPLIED OR PLATED FINISHES

TOLERANCES ON

DECIMALS	FRACTIONS
.X ± .05	± 1/64
.XX ± .01	ANGLES
.XXX ± .005	± 0° -30'

QTY. REQ.	ITEM	PART NO.	DESCRIPTION	SYMBOL
LIST OF MATERIAL				
THE TECHNICAL MATERIEL CORP. MAMARONECK, NEW YORK				
MARKING FRONT PANEL AC				
SIZE	CODE IDENT. NO.	DWG NO.	ISSUE	
C	82679	LD 3029	Ø	
SCALE 1:1			SHEET	OF

LD 3029