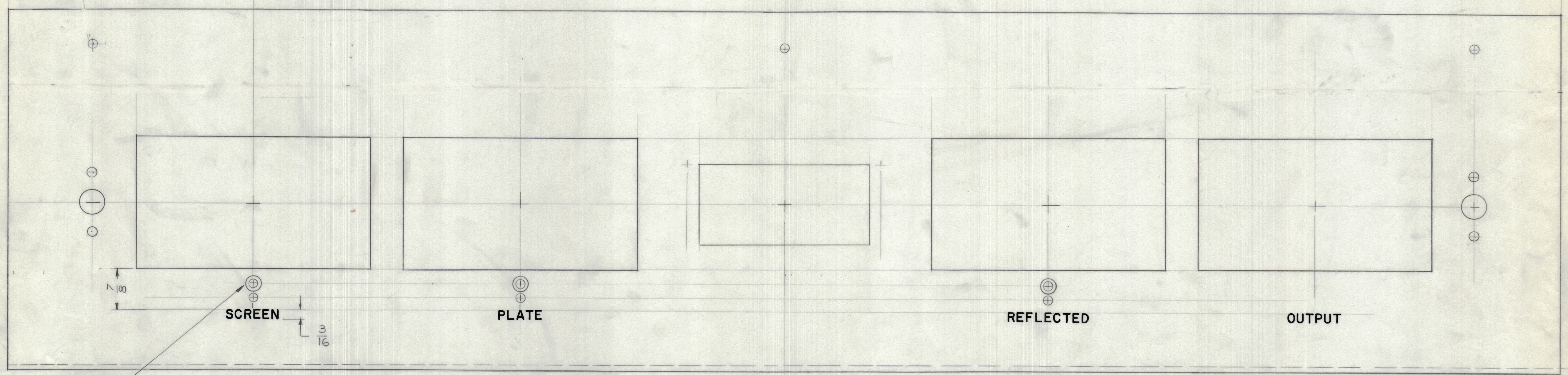


REVISIONS					
E.M.N.O	DRAFT	CHKD	ZONE	LTR	
DESCRIPTION				DATE	APPROVED
				9-76	



5/16 DIA CIRCLES RED  
3 REQ

LETTER AS PER TMC SPEC NO. S-566  
ALL LETTER GROUPS TO BE CENTERED ON HOLES (OR SLOTS)  
ENGRAVING TO BE GOTHIC WHITE FILLED  
SIZE SHOWN ON CHART.

HEIGHT OF LETTER	DEPTH OF STROKE	WIDTH OF STROKE
3/16	.010	.015

REF: M56692

1	HFLM-10K/1	
QTY / UNIT	MODEL USED ON	ASS'Y NO.
APPLICATION		
CODE		
MATERIAL		
FINISH		

UNLESS OTHERWISE SPECIFIED  
DIMENSIONS ARE IN INCHES  
AND INCLUDE CHEMICALLY APPLIED  
OR PLATED FINISHES

TOLERANCES ON

DECIMALS	FRACTIONS
.X ± .05	± 1/64
.XX ± .01	ANGLES
.XXX ± .005	± 0° -30'

QTY. REQ.	ITEM	PART NO.	DESCRIPTION	SYMBOL
LIST OF MATERIAL				
FINAL APPROVAL		DATE	THE TECHNICAL MATERIEL CORP.	
MECH. DES.		DATE	MAMARONECK, NEW YORK	
ELECT. DES.		DATE	MARKING, METER PANEL	
CHECKED		DATE		
DRAWN		DATE		
G.D.L.		3-2-76	SIZE	CODE IDENT NO.
			D	82679
			LD 3047	ISSUE
			SCALE	SHEET OF

NOTICE TO PERSONS RECEIVING THIS DRAWING  
THE TECHNICAL MATERIEL CORPORATION claims proprietary right in the material disclosed hereon.  
This drawing is issued in confidence for engineering information only and may not be reproduced or used  
to manufacture anything shown hereon without permission from THE TECHNICAL MATERIEL CORPORATION  
to the user. This drawing is loaned for mutual assistance and is subject to recall at any time.