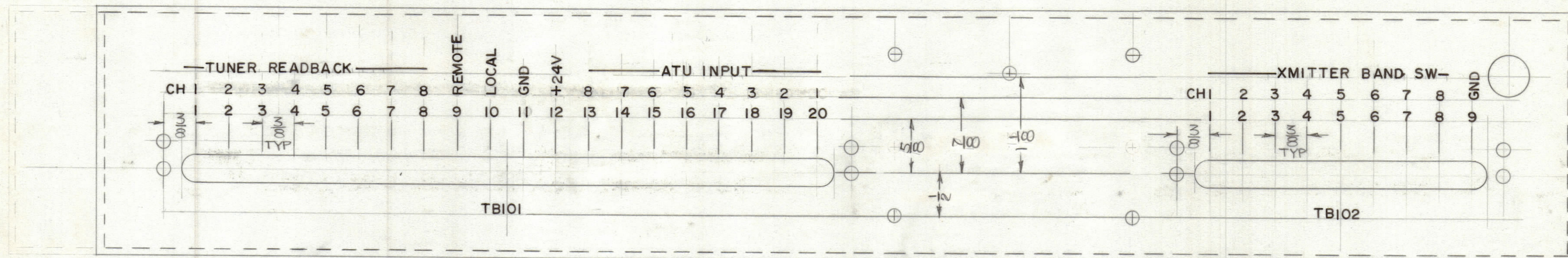


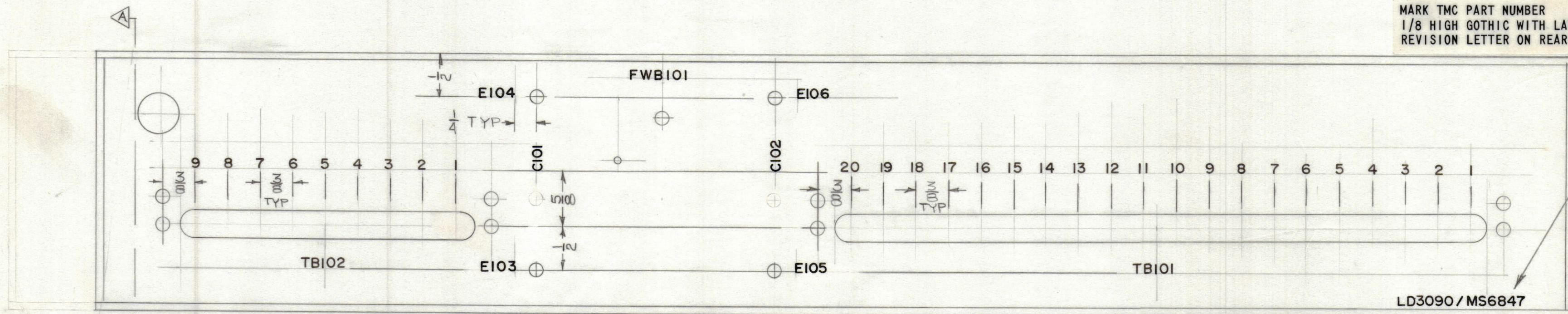
REVISIONS						
ZONE	LTR	DESCRIPTION	DATE	E.M.N.NO	DRAFT	CHKD APPD
	φ	ORIGINAL RELEASE FOR PRODUCTION	1-17-78		PH	



EXTERIOR VIEW

LD 3090-1

MARK TMC PART NUMBER
1/8 HIGH GOTHIC WITH LATEST
REVISION LETTER ON REAR OF PANEL

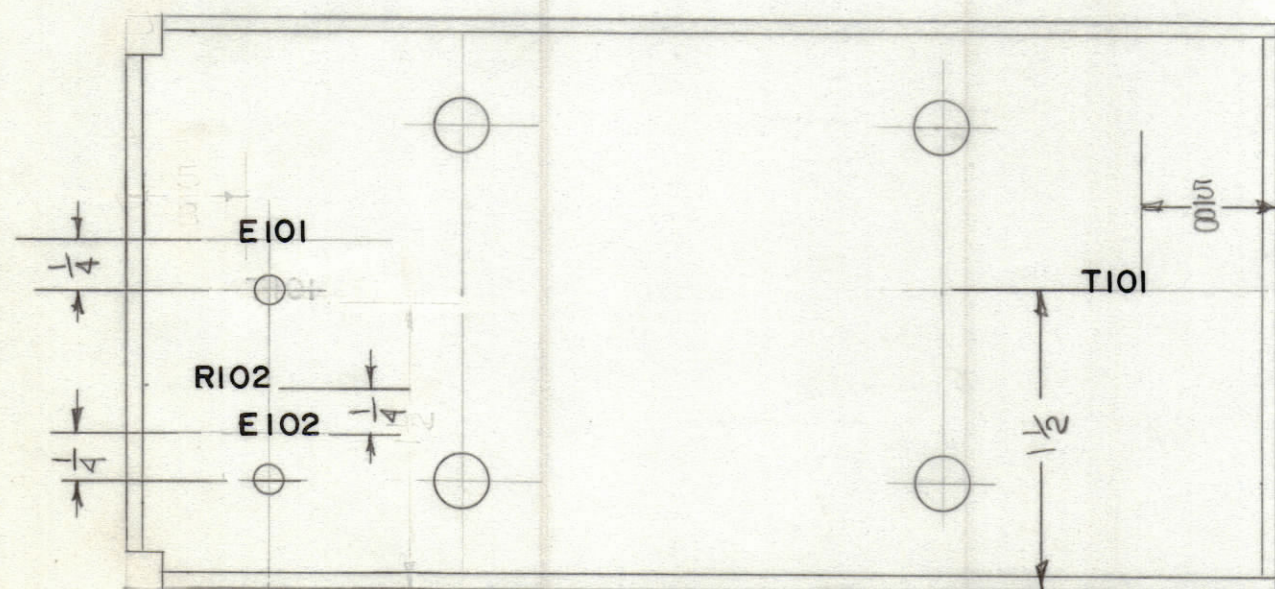


INTERIOR VIEW

LD3090 / MS6847

MARKING PROCESS: AS PER TMC SPECIFICATION S727
LETTERING: 1/8 HIGH BLACK GOTHIC, LOCATED AS SHOWN

LD 3090-2



SECTION A-A
(INTERIOR)

1	ATU-K-8	AX522G
QTY / UNIT	MODEL USED ON	ASS'Y NO.
APPLICATION		
CODE		

NOTICE TO PERSONS RECEIVING THIS DRAWING
THE TECHNICAL MATERIEL CORPORATION claims proprietary right in the material disclosed hereon. This drawing is issued in confidence for engineering information only and may not be reproduced or used to manufacture anything shown hereon without permission from THE TECHNICAL MATERIEL CORPORATION to the user. This drawing is loaned for mutual assistance and is subject to recall at any time.

UNLESS OTHERWISE SPECIFIED
DIMENSIONS ARE IN INCHES
AND INCLUDE CHEMICALLY APPLIED
OR PLATED FINISHES

TOLERANCES ON

DECIMALS	FRACTIONS
.X ± .05	± 1/64
.XX ± .01	ANGLES
.XXX ± .005	± 0° -30'

MATERIAL

FINISH

REF: MS 6847

QTY. REQ.	ITEM	PART NO.	DESCRIPTION	SYMBOL
LIST OF MATERIAL				
FINAL APPROVAL: [Signature] DATE: 1/17/78				
MECH. DES.: [Signature] DATE: 1-17-78				
ELECT. DES.: [Signature] DATE:				
CHECKED: [Signature] DATE:				
DRAWN: PH DATE: 10-3-77				
THE TECHNICAL MATERIEL CORP. MAMARONECK, NEW YORK				
LETTERING, SIDE AND REAR				
SIZE	CODE IDENT.NO.	DWG NO.	ISSUE	
C	82679	LD 3090	φ	
SCALE	FULL	SHEET	OF	