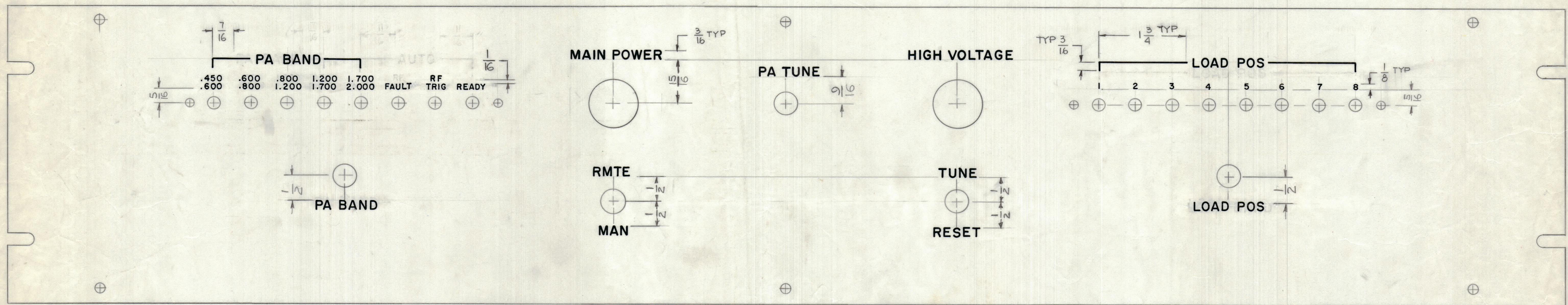


REVISIONS					DATE	APPROVED	
E.M.N.NO	DRAFT	CHKD	ZONE	LTR	DESCRIPTION		
					ORIGINAL RELEASE FOR PRODUCTION	8-28-79	FB

400 600 800 1.200 1.700 2.000
 610 800 1.200 1.700 2.000
 FAULT RF TRIG READY



LETTER HIGHT	DEPTH OF STROKE	HEIGHT OF STROKE
3/16	.010	.025
1/8	.010	.020

NOTES:
 ENGRAVING TO BE BLACK FILLED
 ALL LETTER GROUPS TO BE CENTERED ON HOLES

REF: MS 6939

1	MFTA-10K/1(400Hz)	BMA561
QTY / UNIT	MODEL USED ON	ASS'Y NO.
	APPLICATION	
	CODE	

UNLESS OTHERWISE SPECIFIED DIMENSIONS ARE IN INCHES AND INCLUDE CHEMICALLY APPLIED OR PLATED FINISHES	FINAL APPROVAL G.D.L.	DATE 8/28/79
TOLERANCES ON DECIMALS .X ± .05 .XX ± .01 .XXX ± .005	ELECT. DES.	DATE
FRACTIONS ± 1/64 ANGLES ± 0° -30'	CHECKED	DATE
MATERIAL	DRAWN G.D.L.	DATE 9-19-78
FINISH		

QTY. REQ.	ITEM	PART NO.	DESCRIPTION	SYMBOL
LIST OF MATERIAL				
THE TECHNICAL MATERIEL CORP. MAMARONECK, NEW YORK				
MARKING, FRONT PANEL (CONTROL PANEL)				
SIZE	CODE	IDENT NO.	DWG NO.	ISSUE
D	82679	LD 3111		0

NOTICE TO PERSONS RECEIVING THIS DRAWING
 THE TECHNICAL MATERIEL CORPORATION claims proprietary right in the material disclosed hereon. This drawing is issued in confidence for engineering information only and may not be reproduced or used to manufacture anything shown hereon without permission from THE TECHNICAL MATERIEL CORPORATION to the user. This drawing is loaned for mutual assistance and is subject to recall at any time.

B LD3111