

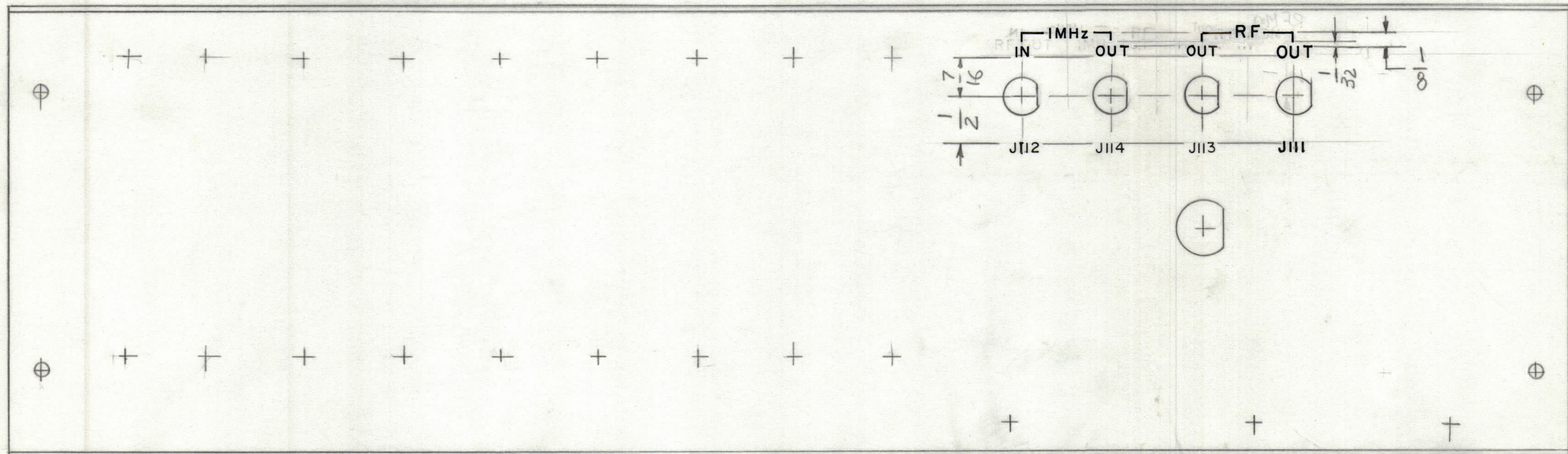
4

3

2

1

REVISIONS					
ZONE	LTR	DESCRIPTION	DATE	E.M.N.NO	APPD



MARKING PROCESS: AS PER TMC SPECIFICATION S727  
 LETTERING: 1/8 HIGH BLACK GOTHIC, LOCATED AS SHOWN

REF: MS 7003

QTY. REQ.	ITEM	PART NO.	DESCRIPTION	SYMBOL
LIST OF MATERIAL				
UNLESS OTHERWISE SPECIFIED DIMENSIONS ARE IN INCHES AND INCLUDE CHEMICALLY APPLIED OR PLATED FINISHES			<b>THE TECHNICAL MATERIEL CORP.</b> MAMARONECK, NEW YORK	
TOLERANCES ON			MARKING REAR PLATE	
DECIMALS .X ± .05 .XX ± .01 .XXX ± .005			SIZE CODE IDENT.NO. DWG NO. ISSUE	
FRACTIONS ± 1/64 ANGLES ± 0° -30'			C 82679 LD 3128 X	
MATERIAL			SCALE 1:1 SHEET OF	
FINISH			1 3128	

1	MFO	
QTY / UNIT	MODEL USED ON	ASS'Y NO.
APPLICATION		
	CODE	

**NOTICE TO PERSONS RECEIVING THIS DRAWING**  
 THE TECHNICAL MATERIEL CORPORATION claims proprietary right in the material disclosed hereon. This drawing is issued in confidence for engineering information only and may not be reproduced or used to manufacture anything shown hereon without permission from THE TECHNICAL MATERIEL CORPORATION to the user. This drawing is loaned for mutual assistance and is subject to recall at any time.

4

3

2

1