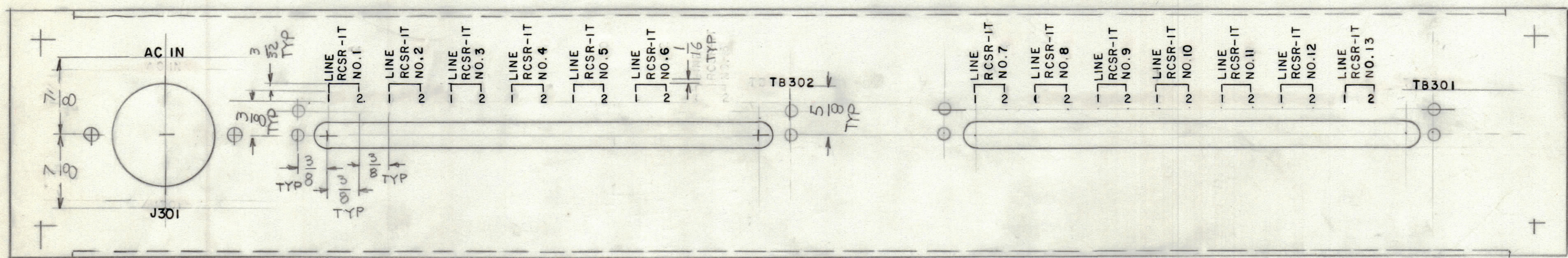


REVISIONS						
ZONE	LTR	DESCRIPTION	DATE	E.M.N.O.	DRAFT	CHKD APPD
	X1	TO TB 301 & TB 302 REF. DES. REV.	5/27/80		GDL	
	Ø	ORIGINAL RELEASE FOR PRODUCTION	3/20/83		AB	



1- ENGRAVING AS PER TMC SPEC 5505
 2- ALL LETTERING TO BE BLACK FILLED
 3- ALL LINE TO BE BLACK FILLED
 4- ALL LETTER TO BE CENTERED ON HOLES

HEIGHT OF STROKES	DEPTH OF STROKES	WIDTH OF STROKES
.08	.010	.020
LINE WORK	.010	.015

MARKING PROCESS: AS PER TMC SPECIFICATION S727
 LETTERING: 1/8 HIGH BLACK GOTHIC, LOCATED AS SHOWN

REF: MS 7078

QTY / UNIT	SYM 5211-RACK	ASS'Y NO.
APPLICATION		
CODE		
NOTICE TO PERSONS RECEIVING THIS DRAWING THE TECHNICAL MATERIEL CORPORATION claims proprietary right in the material disclosed hereon. This drawing is issued in confidence for engineering information only and may not be reproduced or used to manufacture anything shown hereon without permission from THE TECHNICAL MATERIEL CORPORATION to the user. This drawing is loaned for mutual assistance and is subject to recall at any time.		

QTY. REQ.	ITEM	PART NO.	DESCRIPTION	SYMBOL
LIST OF MATERIAL				
UNLESS OTHERWISE SPECIFIED DIMENSIONS ARE IN INCHES AND INCLUDE CHEMICALLY APPLIED OR PLATED FINISHES				
FINAL APPROVAL		DATE	THE TECHNICAL MATERIEL CORP. MAMARONECK, NEW YORK MARKING, REAR PLATE	
MECH. DES.		DATE		
ELECT. DES.		DATE		
CHECKED		DATE		
DRAWN		DATE		
TOLERANCES ON				
DECIMALS .X ± .05 .XX ± .01 .XXX ± .005		FRACTIONS ± 1/64 ANGLES ± 0° -30'		
MATERIAL		SIZE CODE IDENT. NO. DWG. NO. ISSUE C 82679 LD 3136 Ø		
FINISH		SCALE 1:1 SHEET OF		