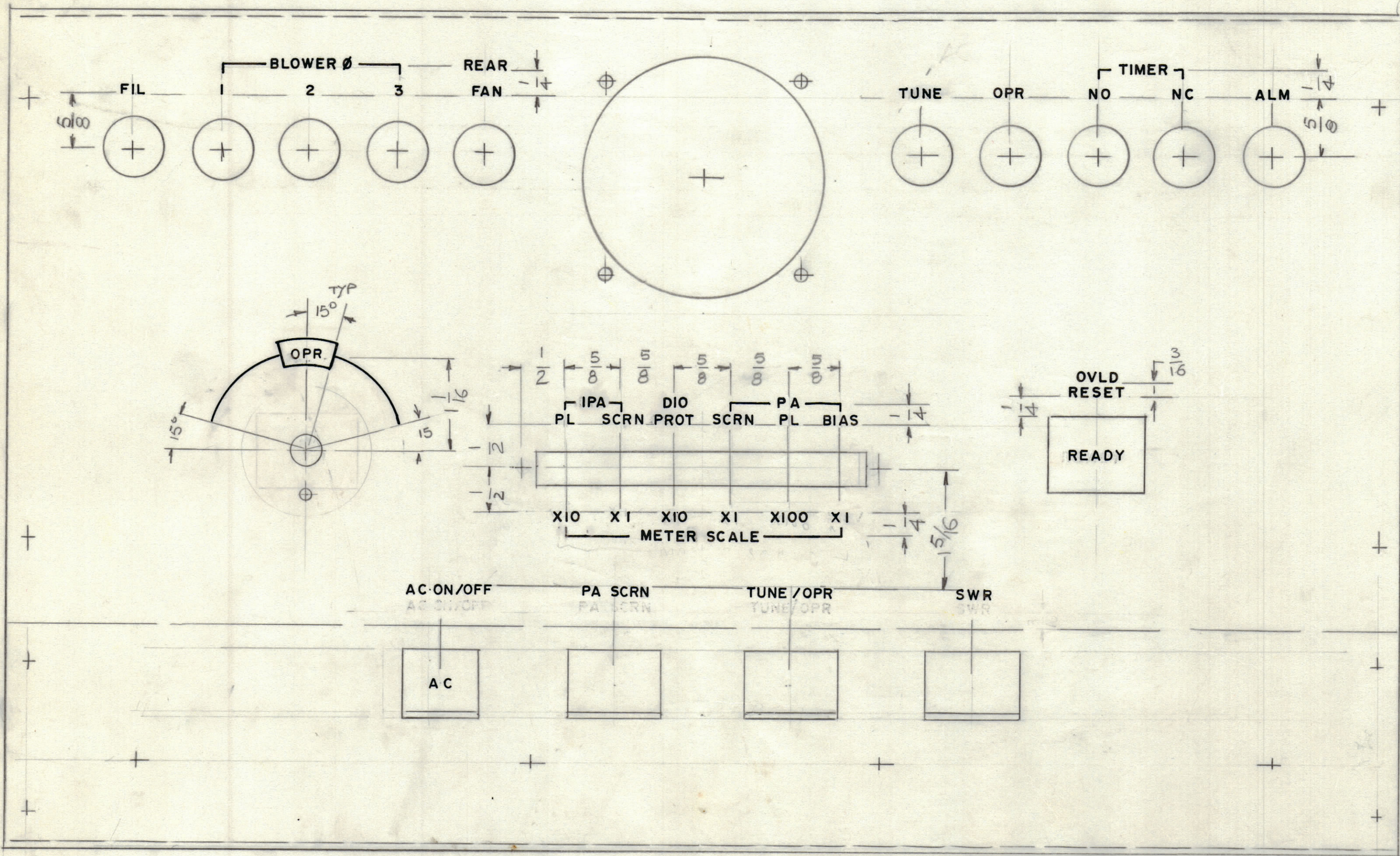


REVISIONS						
ZONE	LTR	DESCRIPTION	DATE	E.M.N.NO	DRAFT	CHKD APPD



ENGRAVING
 LETTERING TO BE 1/8 HIGH WHITE FILLING
 LINE TO BE WHITE FILLING
 LETTERING TO BE CENTERED ON HOLES

ENGRAVING DETAIL

LETTER HIGH	STROKE DEPTH	STROKE WIDTH
1/8	.010	.020
LINE	.010	.015

REF: MS

UNLESS OTHERWISE SPECIFIED
 DIMENSIONS ARE IN INCHES
 AND INCLUDE CHEMICALLY APPLIED
 OR PLATED FINISHES

TOLERANCES ON

DECIMALS	FRACTIONS
.X ± .05	± 1/64
.XX ± .01	ANGLES
.XXX ± .005	± 0° -30'

QTY. REQ.	ITEM	PART NO.	DESCRIPTION	SYMBOL
LIST OF MATERIAL				
THE TECHNICAL MATERIEL CORP. MAMARONECK, NEW YORK				
MARKING FRONT PANEL				
FINAL APPROVAL		DATE		
MECH. DES.		DATE		
ELECT. DES.		DATE		
CHECKED		DATE		
DRAWN		DATE		
G.D.L.		4-17-83		
SIZE	CODE IDENT. NO.	DWG NO.	ISSUE	
C	82679	LD-3151		
SCALE	SHEET			OF

QTY / UNIT	MODEL USED ON	ASS'Y NO.
APPLICATION		
CODE		
NOTICE TO PERSONS RECEIVING THIS DRAWING		
THE TECHNICAL MATERIEL CORPORATION claims proprietary right in the material disclosed hereon. This drawing is issued in confidence for engineering information only and may not be reproduced or used to manufacture anything shown hereon without permission from THE TECHNICAL MATERIEL CORPORATION to the user. This drawing is loaned for mutual assistance and is subject to recall at any time.		

4 3 2 1

D

C

B

A

4 3 2 1

FCI-10-170 (10-66)

N08506