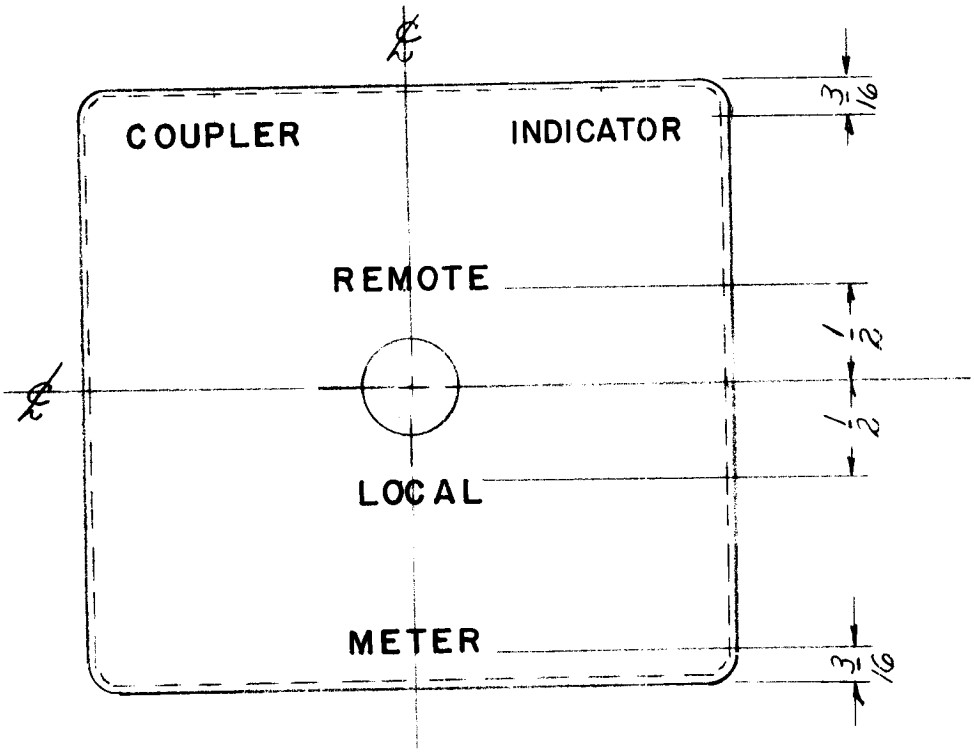


REQ. PER UNIT	USED ON			LD-400 B
	MODEL	ASS'Y. NO.	DATE	
1	JB-1	A-1550	5-22-58	

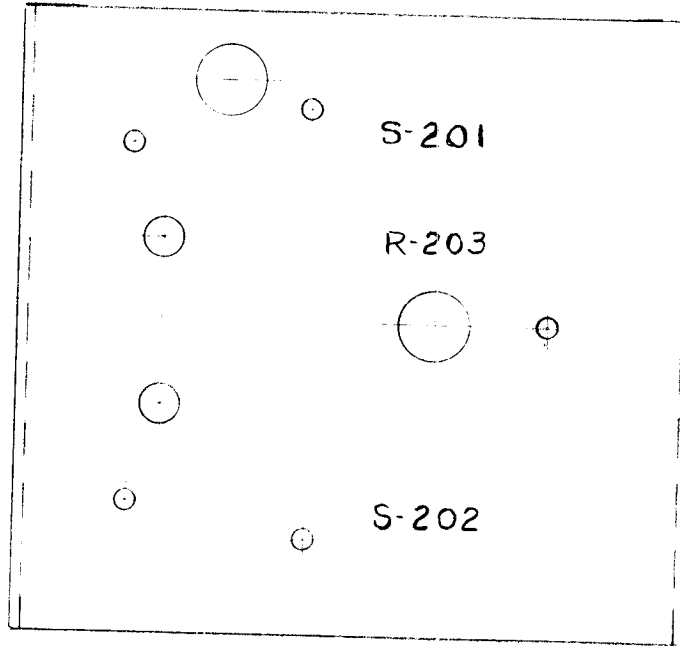


NOTE - LETTERING TO BE $\frac{1}{8}$ " HIGH WHITE GOTHIC.
 MARKING PROCESS: AS PER TMC SPECIFICATION S-727

REF- BX-162

								REQ. ITEM	PART NO.	DESCRIPTION	SYMBOL	
										THE TECHNICAL MATERIEL CORP. MAMARONECK. NEW YORK		
									STOCK SIZE	MARKING, JUNCTION BOX		
									MATERIAL	MODEL SWR-3000-JB-1		
B	1	CLERICAL CHANGE	9.16.64	-	KB				5/22/58			
A	1	INDICATOR WAS "MONITOR"	10/13/58	482	JLB	SMH	JBR					
ISSUE	ITEM	CHANGED FROM	DATE	CH. NO.	DRAFTS	CHECKER	ENG. APP.					
TOLERANCES			SCALE:									
DEC. DIM. ± FRAC. DIM. ± ANGULAR DIM. ±			MAXIMUM ALLOWABLE TOLERANCES HAVE BEEN DETERMINED AND ANY DEVIATIONS WILL BE CAUSE FOR REJECTION. REMOVE ALL BURRS AND SHARP EDGES									
								TYPE & TEMPER	HEAT TREAT. SPEC.	DRAWN	CHECKED	FINAL APPROVAL
								FINISH & SPEC. NO.		ELEC. DES. APP.	MECH. DES. APP.	LD-400 B

REQ. PER UNIT	USED ON			LD-401
	MODEL	ASS'Y. NO.	DATE	
1	ATS-50TU		5-28-58	
1	ATS-70TU		5-28-58	



MARKING PROCESS: AS PER TMC SPECIFICATION S-727.

LETTERING TO BE $\frac{1}{8}$ " HIGH
BLACK GOTHIC

REF-MS-1171

ISSUE	ITEM	CHANGED FROM	DATE	CH. NO.	DRAFTS	CHECKER	ENG. APP.	REQ. ITEM	PART NO.	DESCRIPTION	SYMBOL
									CP	THE TECHNICAL MATERIEL CORP. MAMARONECK, NEW YORK	
									STOCK SIZE	LETTERING, POT. BRACKET	
									MATERIAL		
								CP	CP	5/28/58 HSC	JSR
								TYPE & TEMPER	HEAT TREAT. SPEC.	DRAWN	CHECKED
											FINAL APPROVAL
									FINISH & SPEC. NO.	ELEC. DES. APP.	MECH. DES. APP.
											LD-401

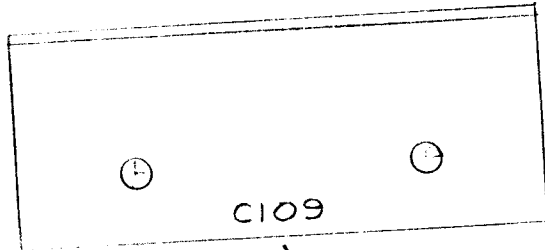
TOLERANCES

DEC. DIM. \pm
FRAC. DIM. \pm
ANGULAR DIM. \pm

SCALE: FULL

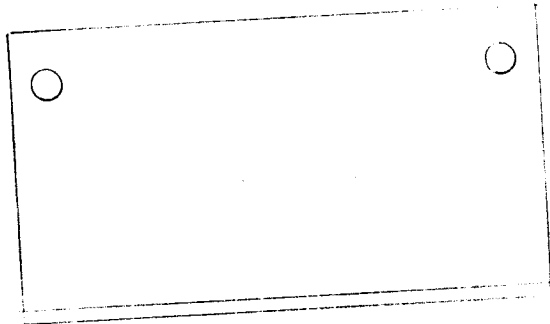
MAXIMUM ALLOWABLE TOLERANCES HAVE BEEN DETERMINED AND ANY DEVIATIONS WILL BE CAUSE FOR REJECTION.
REMOVE ALL BURRS AND SHARP EDGES

REQ. PER UNIT 1	USED ON		DATE 6/9/58	LD-403
	MODEL PSP 350	ASS'Y. NO.		



MARKING PROCESS: AS PER T M C SPECIFICATION S-727

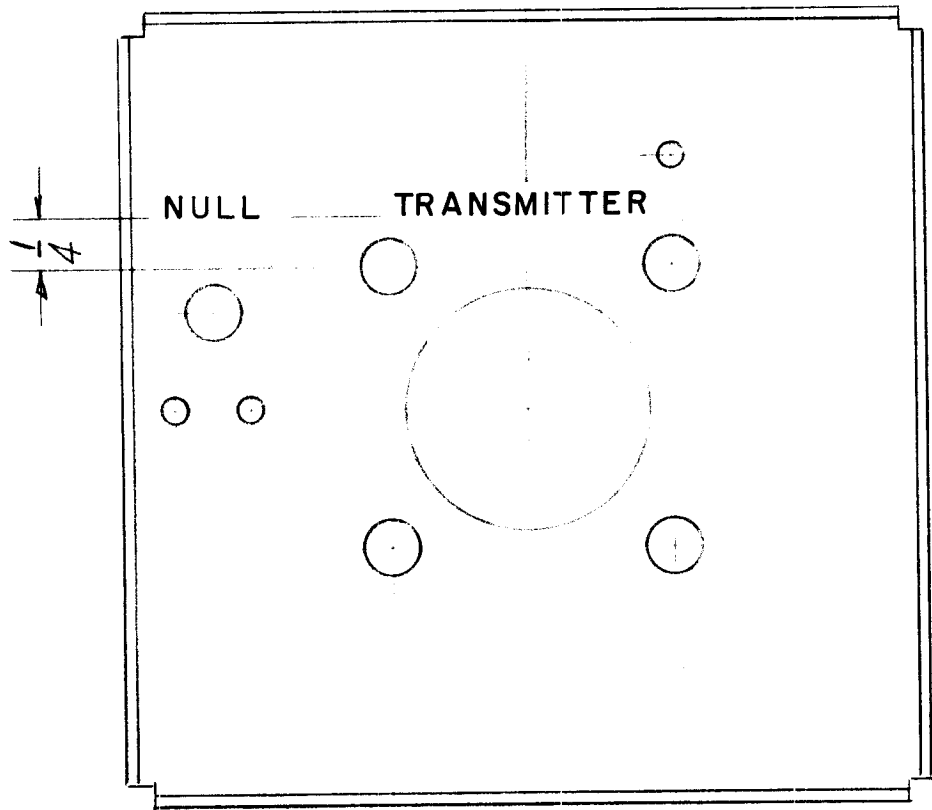
LETTERING: 1/8 HIGH BLACK, GOTHIC
LOCATED AS SHOWN.



REF. MS-1282

ISSUE					CHANGED FROM					DATE	CH. NO.	DRAFTS	CHECKER	ENG. APP.	REQ. ITEM	PART NO.	DESCRIPTION		SYMBOL						
																		THE TECHNICAL MATERIEL CORP. MAMARONECK. NEW YORK							
																		LETTERING, CAPACITOR MTG. BRACKET							
																		16 ⁴ / ₉ /58		Checked	Final Approval				
										SCALE: Full								DRAWN			LD-403				
										TOLERANCES								TYPE & TEMPER							
										DEC. DIM. ± FRAC. DIM. ± ANGULAR DIM. ±					MAXIMUM ALLOWABLE TOLERANCES HAVE BEEN DETERMINED AND ANY DEVIATIONS WILL BE CAUSE FOR REJECTION. REMOVE ALL BURRS AND SHARP EDGES								HEAT TREAT. SPEC.		
																		FINISH & SPEC. NO.							
																		ELEC. DES. APP.		MECH. DES. APP.					

REQ. PER UNIT	USED ON			LD-404
	MODEL	ASS'Y. NO.	DATE	
1	SWR-300000		6-10-53	

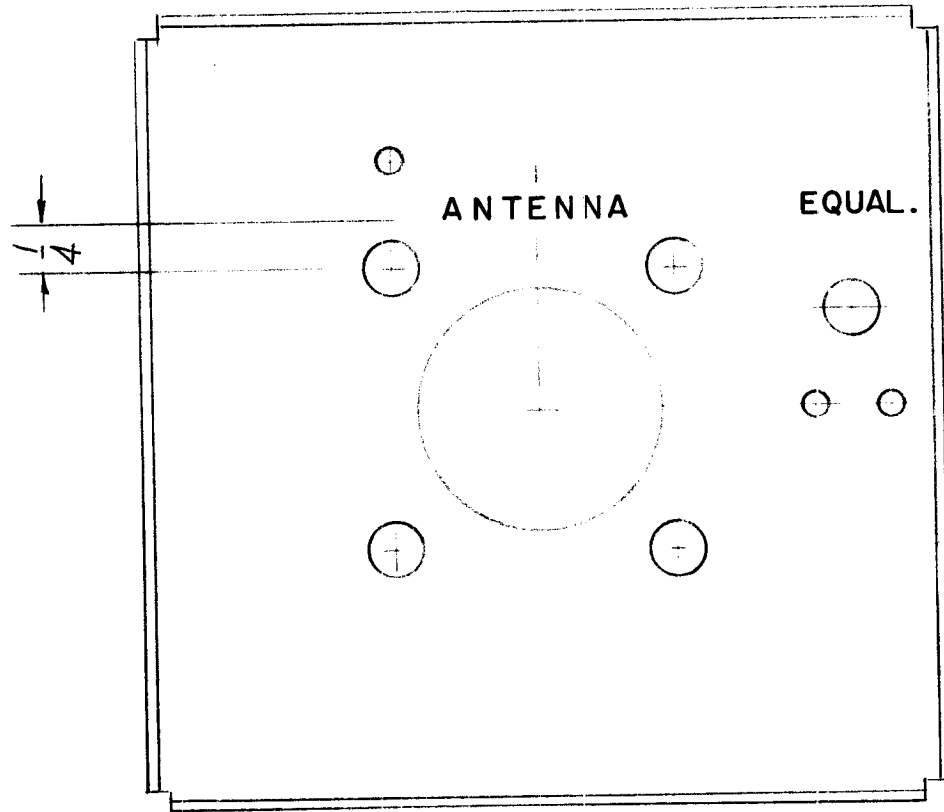


NOTE:
 ENGRAVING TO BE
 1/8 HIGH GOTHIC
 WHITE FILLED

REF- MS-1275

ISSUE	ITEM	CHANGED FROM	DATE	CH. NO.	DRAFTS	CHECKER	ENG. APP.	REQ. ITEM	PART NO.	DESCRIPTION	SYMBOL		
								CPO		THE TECHNICAL MATERIEL CORP. MAMARONECK. NEW YORK			
									STOCK SIZE				
										ENGRAVING, PLATE, LEFT SIDE			
									MATERIAL				
								CPO	CPO	6/10/53 CPO	FILE	JER	
									TYPE & TEMPER	HEAT TREAT. SPEC.	DRAWN	CHECKED	FINAL APPROVAL
											BAF	FILE	LD-404
									FINISH & SPEC. NO.	ELEC. DES. APP.	MECH. DES. APP.		

REQ. PER UNIT	USED ON			LD-405
	MODEL	ASS'Y. NO.	DATE	
1	3WR-3000CU		6-10-58	



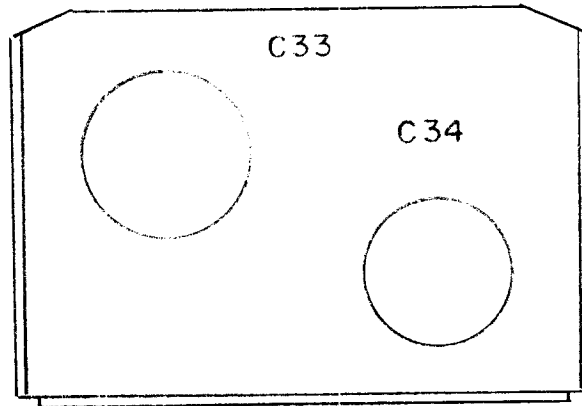
NOTE:

ENGRAVING TO BE
 $\frac{1}{8}$ HIGH GOTHIC
 WHITE FILLED

REF - MS - 1276

							REQ. ITEM	PART NO.	DESCRIPTION	SYMBOL					
								CPD	THE TECHNICAL MATERIEL CORP. MAMARONECK, NEW YORK	ENGRAVING, PLATE, RIGHT SIDE					
								STOCK SIZE							
								MATERIAL							
ISSUE	ITEM	CHANGED FROM	DATE	CH. NO.	DRAFTS	CHECKER	ENG. APP.	CPD	CPD	6/10/58 JRE	JRE				
TOLERANCES			SCALE:					TYPE & TEMPER	HEAT TREAT. SPEC.	DRAWN	CHECKED	FINAL APPROVAL			
DEC. DIM. \pm			MAXIMUM ALLOWABLE TOLERANCES HAVE BEEN DETERMINED AND ANY DEVIATIONS WILL BE CAUSE FOR REJECTION. REMOVE ALL BURRS AND SHARP EDGES							SAF	AM	LD-405			
FRAC. DIM. \pm															
ANGULAR DIM. \pm															
							FINISH & SPEC. NO.	ELEC. DES. APP.	MECH. DES. APP.						

REQ. PER UNIT	USED ON			LD-415
	MODEL	ASS'Y. NO.	DATE	
1	CFA		7-2-38	



MARKING PROCESS: AS PER TMC SPECIFICATION S-727

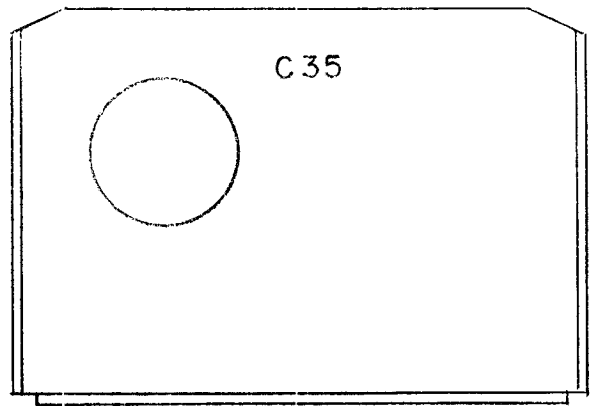
LETTERING: 1/8 HIGH BLACK, GOTHIC
LOCATED AS SHOWN.

REF.: TMC # MS-269 (1)

								REQ. ITEM	PART NO.	DESCRIPTION			SYMBOL				
										THE TECHNICAL MATERIEL CORP. MAMARONECK, NEW YORK LETTERING, BRACKET- REAR CONDENSER MODEL CFA							
ISSUE	ITEM	CHANGED FROM	DATE	CH. NO.	DRAFTS	CHECKER	ENG. APP.			7-2-38	16	ARB					
TOLERANCES			SCALE: <i>LD</i>														
DEC. DIM. ±			MAXIMUM ALLOWABLE TOLERANCES HAVE BEEN DETERMINED AND ANY DEVIATIONS WILL BE CAUSE FOR REJECTION. REMOVE ALL BURRS AND SHARP EDGES														
FRAC. DIM. ±																	
ANGULAR DIM. ±																	
								TYPE & TEMPER		HEAT TREAT. SPEC.	DRAWN	CHECKED	FINAL APPROVAL				
													LD-415				
								FINISH & SPEC. NO.		ELEC. DES. APP.	MECH. DES. APP.						

REQ. PER UNIT	USED ON			LD-417
	MODEL	ASS'Y. NO.	DATE	
1	CFA		7-2-58	

42 BCC GOT

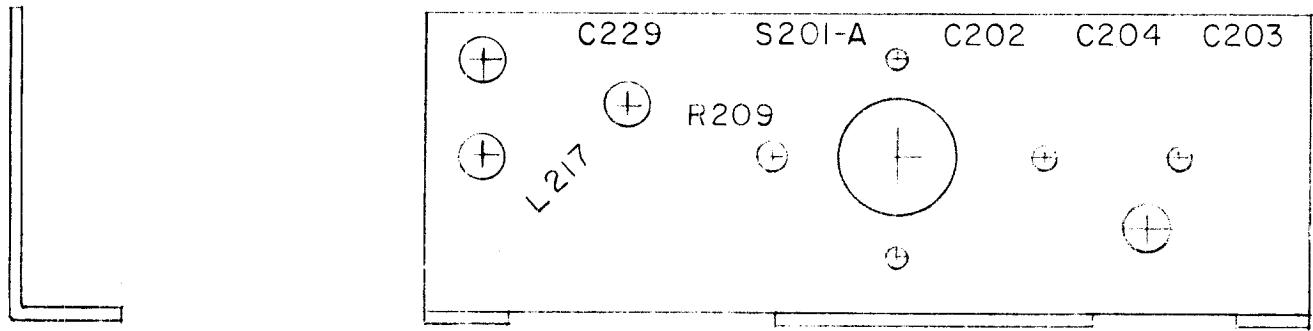


MARKING PROCESS: AS PER TMC SPECIFICATION S-727.
 LETTERING: 1/8 HIGH BLACK, GOTHIC
 LOCATED AS SHOWN.

REF: TMC # HS-270 (1)

							REQ. ITEM	PART NO.	DESCRIPTION	SYMBOL					
								CFA	THE TECHNICAL MATERIEL CORP. MAMARONECK, NEW YORK						
								STOCK SIZE		LETTERING, BRACKET					
								MATERIAL		FRONT CONDENSER MODEL CFA					
ISSUE ITEM	CHANGED FROM	DATE	CH. NO.	DRAFTS	CHECKER	ENG. APP.			7-2-58						
TOLERANCES		SCALE:							16						
DEC. DIM. ±		MAXIMUM ALLOWABLE TOLERANCES HAVE BEEN DETERMINED AND ANY DEVIATIONS WILL BE CAUSE FOR REJECTION. REMOVE ALL BURRS AND SHARP EDGES					TYPE & TEMPER		HEAT TREAT. SPEC.	DRAWN	CHECKED	FINAL APPR VAL			
FRAC. DIM. ±															
ANGULAR DIM. ±															
							FINISH & SPEC. NO.		ELEC. DES. APP.	MECH. DES. APP.	LD-417				

REQ. PER UNIT	USED ON			LD-424
	MODEL	ASS'Y. NO.	DATE	
1	RFA-1		6-9-58	



MARKING PROCESS: AS PER TMC SPECIFICATION S-727

LETTERING: 1/8 HIGH BLACK, GOTHIC
LOCATED AS SHOWN.

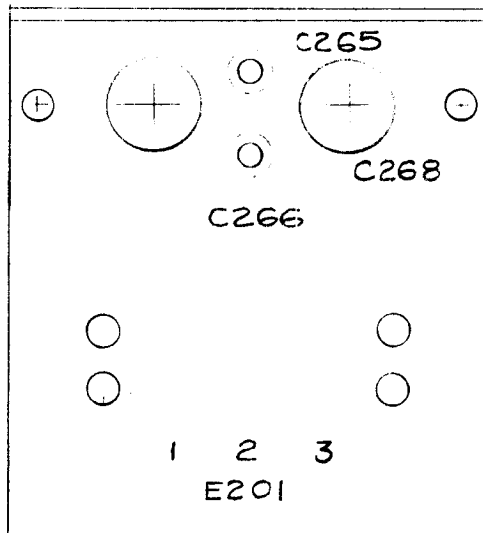
Ref-2115-1245

REQ.	ITEM	PART NO.	DESCRIPTION				SYMBOL
			THE TECHNICAL MATERIEL CORP. MAMARONECK, NEW YORK				
			LETTERING, SWITCH MOUNTING BRACKET				
			MATERIAL				
			DRAWN				
			CHECKED				
			FINAL APPROVAL				
			ELEC. DES. APP.				
			MECH. DES. APP.				
			FINISH & SPEC. NO.				
			LD-424				

ISSUE	ITEM	CHANGED FROM	DATE	CH. NO.	DRAFTS	CHECKER	ENG. APP.

TOLERANCES	SCALE:
DEC. DIM. ±	MAXIMUM ALLOWABLE TOLERANCES HAVE BEEN DETERMINED AND ANY DEVIATIONS WILL BE CAUSE FOR REJECTION. REMOVE ALL BURRS AND SHARP EDGES
FRAC. DIM. ±	
ANGULAR DIM. ±	

REQ. PER UNIT	USED ON			LD-425
	MODEL	ASS'Y. NO.	DATE	
1	RFA-1		6-10-58	

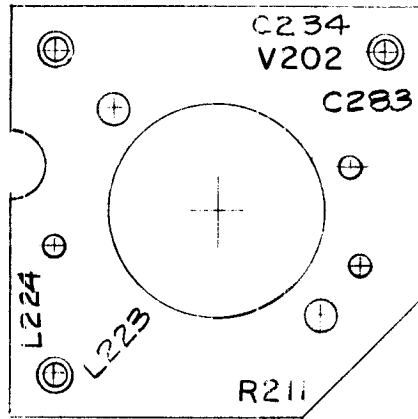


MARKING PROCESS: AS PER T M C SPECIFICATION S-727.
 LETTERING: 1/8 HIGH BLACK, GOTHIC
 LOCATED AS SHOWN.

Ref: IMS-1246

ISSUE	ITEM	CHANGED FROM	DATE	CH. NO.	DRAFTS	CHECKER	ENG. APP.	REQ. ITEM	PART NO.	DESCRIPTION	SYMBOL	
										THE TECHNICAL MATERIEL CORP. MAMARONECK, NEW YORK LETTERING, TERMINAL STRIP BRACKET		
									STOCK SIZE			
									MATERIAL			
TOLERANCES			SCALE: FULL									
DEC. DIM. ± FRAC. DIM. ± ANGULAR DIM. ±			MAXIMUM ALLOWABLE TOLERANCES HAVE BEEN DETERMINED AND ANY DEVIATIONS WILL BE CAUSE FOR REJECTION. REMOVE ALL BURRS AND SHARP EDGES					TYPE & TEMPER	HEAT TREAT. SPEC.	DRAWN	CHECKED	FINAL APPROVAL
										16/10/58		
								FINISH & SPEC. NO.		ELEC. DES. APP.	MECH. DES. APP.	LD-425

REQ. PER UNIT	USED ON			LD-427
	MODEL	ASS'Y. NO.	DATE	
1	RFA-1		6-10-58	

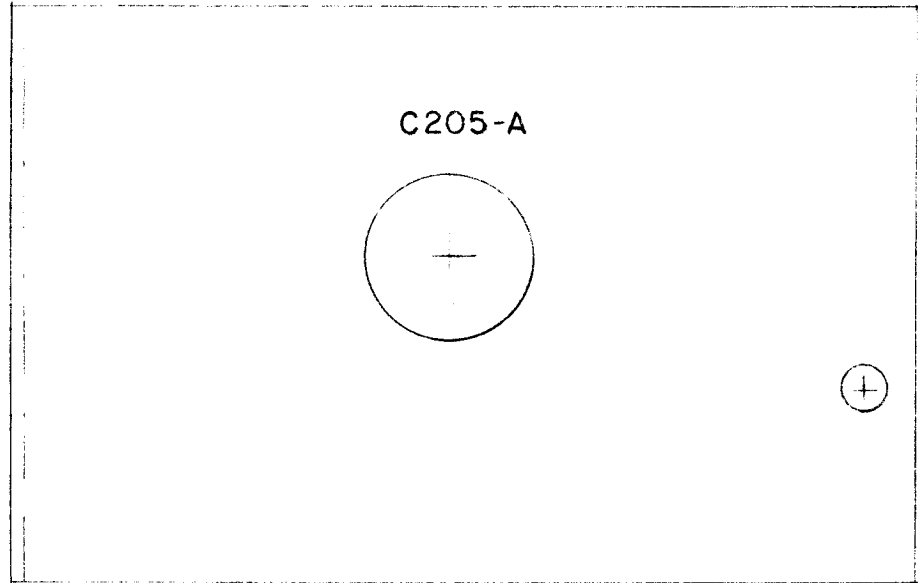


MARKING PROCESS: AS PER TMC SPECIFICATION S-727
 LETTERING: 1/8 HIGH BLACK, GOTHIC
 LOCATED AS SHOWN.

Ref-IMS-1253

REQ. ITEM	PART NO.	DESCRIPTION	SYMBOL
		THE TECHNICAL MATERIEL CORP. MAMARONECK. NEW YORK	
	STOCK SIZE	LETTERING, DRIVER TUBE MTG.	
	MATERIAL	PLATE	
ISSUE ITEM	CHANGED FROM	DATE	CH. NO. DRAFTS CHECKER ENG. APP.
TOLERANCES		SCALE:	
DEC. DIM. ±		MAXIMUM ALLOWABLE TOLERANCES HAVE BEEN DETERMINED AND ANY DEVIATIONS WILL BE CAUSE FOR REJECTION.	
FRAC. DIM. ±		REMOVE ALL BURRS AND SHARP EDGES	
ANGULAR DIM. ±			
	TYPE & TEMPER	HEAT TREAT. SPEC.	DRAWN
			CHECKED
	FINISH & SPEC. NO.	ELEC. DES. APP.	MECH. DES. APP.
		6-10-58	ADD
			LD-427

REQ. PER UNIT	USED ON			LD-428
	MODEL	ASS'Y. NO.	DATE	
1	RFA-1		6-9-58	



MARKING PROCESS: AS PER TMC SPECIFICATION S-727

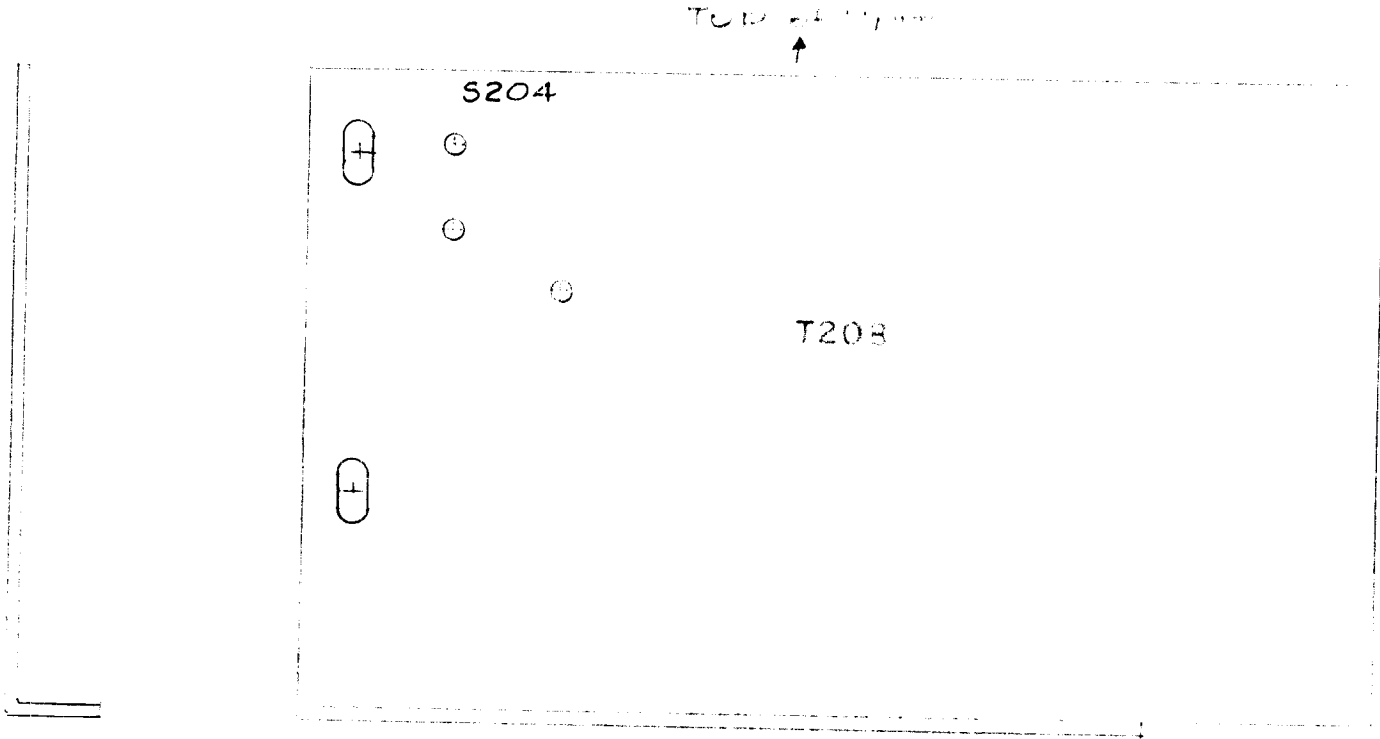
LETTERING: 1/8 HIGH BLACK, GOTHIC
LOCATED AS SHOWN.



Ref: 2M15-1255

REQ. ITEM	PART NO.	DESCRIPTION	SYMBOL
		THE TECHNICAL MATERIEL CORP. MAMARONECK, NEW YORK	
	STOCK SIZE	LETTERING, CAPACITOR	
	MATERIAL	SHIELD	
ISSUE	ITEM	CHANGED FROM	DATE
			16 9/58
TOLERANCES		SCALE:	
DEC. DIM. ±	MAXIMUM ALLOWABLE TOLERANCES HAVE BEEN DETERMINED AND ANY DEVIATIONS WILL BE CAUSE FOR REJECTION.		
FRAC. DIM. ±	REMOVE ALL BURRS AND SHARP EDGES		
ANGULAR DIM. ±			
TYPE & TEMPER		HEAT TREAT. SPEC.	DRAWN
FINISH & SPEC. NO.		ELEC. DES. APP.	MECH. DES. APP.
			LD-428

REQ. PER UNIT	USED ON			LD-429
	MODEL	ASSY. NO.	DATE	
1	KFA-1		6-9-58	



MARKING PROCESS: AS PER TMC SPECIFICATION S-727.

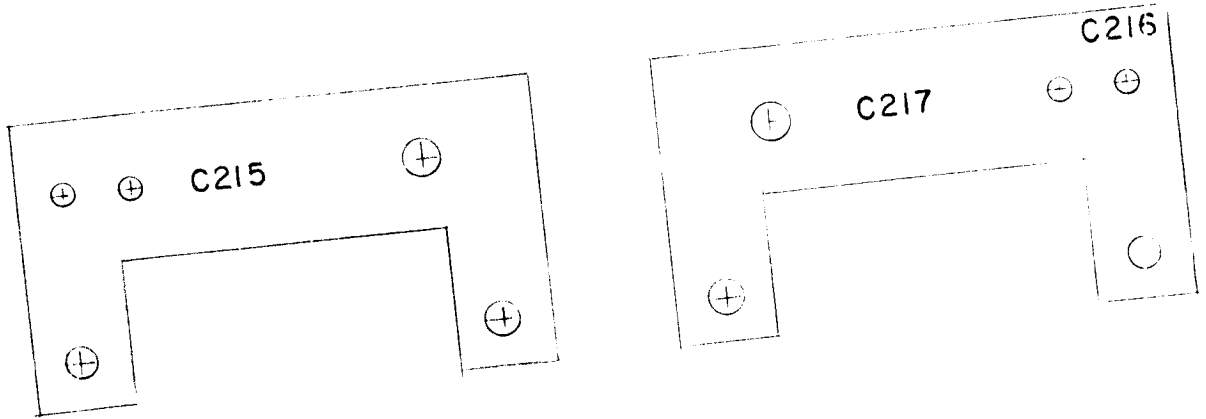
LETTERING: 1/8 HIGH BLACK, GOTHIC
LOCATED AS SHOWN.



REF MS-1256(1)

								REQ. ITEM	PART NO.	DESCRIPTION	SYMBOL				
								THE TECHNICAL MATERIEL CORP. MAMARONECK, NEW YORK							
								LETTERING: FIL, TRANSFORMER							
								SHIELD							
ISSUE	ITEM	CHANGED FROM	DATE	CH. NO.	DRAFTS	CHECKER	ENG. APP.	MATERIAL							
TOLERANCES			SCALE:							6/9/58		ATJ			
DEC. DIM. ±			MAXIMUM ALLOWABLE TOLERANCES HAVE BEEN DETERMINED AND ANY DEVIATIONS WILL BE CAUSE FOR REJECTION. REMOVE ALL BURRS AND SHARP EDGES					TYPE & TEMPER	HEAT TREAT. SPEC.	DRAWN	CHECKED	FINAL APPROVAL			
FRAC. DIM ±															
ANGULAR DIM. ±															
								FINISH & SPEC. NO.		ELEC. DES. APP.	MECH. DES. APP.	LD-429			

REQ. PER UNIT	USED ON		DATE	LD-431
	MODEL	ASS'Y. NO.		
1	RFA-1		6-9-58	



MARKING PROCESS: AS PER TMC SPECIFICATION S-727.

LETTERING: 1/8 HIGH BLACK, GOTHIC
LOCATED AS SHOWN.

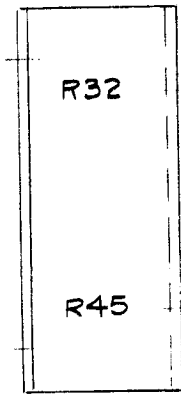
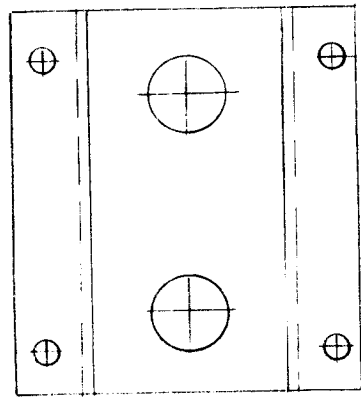
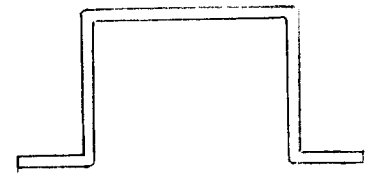


Ref. IMS-1264

										DESCRIPTION		SYMBOL					
										THE TECHNICAL MATERIEL CORP. MAMARONECK. NEW YORK							
										LETTERING, CAPACITOR MTG. PLATE							
ISSUE	ITEM	CHANGED FROM	DATE	CH. NO.	DRAFTS	CHECKER	ENG. APP.	REQ.	ITEM	PART NO.	STOCK SIZE	MATERIAL	TYPE & TEMPER	HEAT TREAT. SPEC.	DRAWN	CHECKED	FINAL APPROVAL
TOLERANCES			SCALE:					FINISH & SPEC. NO.		ELEC. DES. APP.		MECH. DES. APP.		LD-431			
DEC. DIM. ±			MAXIMUM ALLOWABLE TOLERANCES HAVE BEEN DETERMINED AND ANY DEVIATIONS WILL BE CAUSE FOR REJECTION.														
FRAC. DIM. ±			REMOVE ALL BURRS AND SHARP EDGES														
ANGULAR DIM. ±																	

REQ. PER UNIT	USED ON		
	MODEL	ASS'Y. NO.	DATE
1	CFA-1		7-23-58
1	CFA-1LB		7-23-58
1	CFA-L		7-23-58

LD-432



MARKING PROCESS: AS PER T M C SPECIFICATION S-727

LETTERING: 1/8 HIGH BLACK, GOTHIC LOCATED AS SHOWN.

Ref = (1) MS-283

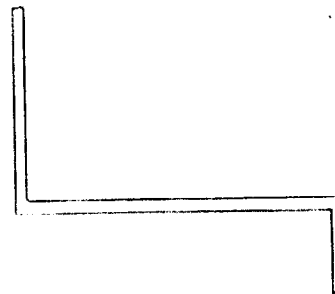
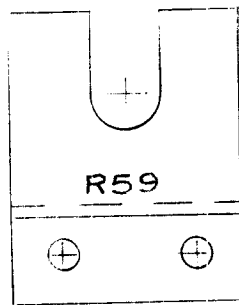
ISSUE								REQ. ITEM	PART NO.	DESCRIPTION	SYMBOL					
										THE TECHNICAL MATERIEL CORP. MAMARONECK. NEW YORK <i>LETTERING, POT. BRACKET</i>						
									STOCK SIZE							
									MATERIAL							
ISSUE	ITEM	CHANGED FROM	DATE	CH. NO.	DRAFTS	CHECKER	ENG. APP.			167/23/58						
TOLERANCES			SCALE: <i>FULL</i>													
DEC. DIM. ±			MAXIMUM ALLOWABLE TOLERANCES HAVE BEEN DETERMINED AND ANY DEVIATIONS WILL BE CAUSE FOR REJECTION. REMOVE ALL BURRS AND SHARP EDGES					TYPE & TEMPER	HEAT TREAT. SPEC.	DRAWN	CHECKED	FINAL APPROVAL				
FRAC. DIM. ±																
ANGULAR DIM. ±												FINISH & SPEC. NO.		ELEC. DES. APP.	MECH. DES. APP.	
											LD-432					

REQ. PER UNIT	USED ON			LD-433
	MODEL	ASS'Y. NO.	DATE	
1	CFA-1		7-23-58	
1	CFA-L		7-23-58	
1	CFA-1LB		7-23-58	

600 615

NOTES:

1. MARKING PROCESS: AS PER TMC SPEC 5-727.
2. LETTERING: 1/8 HIGH, BLACK GOTHIC, LOCATED AS SHOWN.

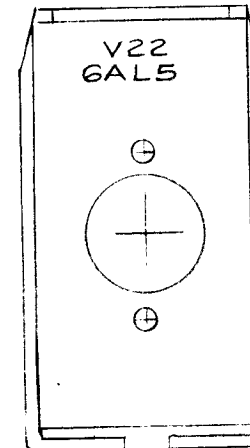
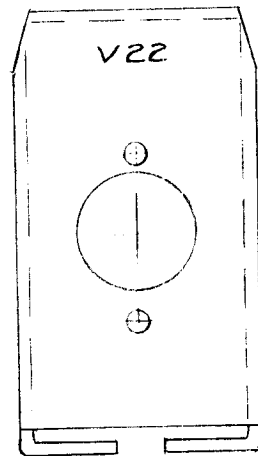


REF: MS-284 (1)

								REQ. ITEM	PART NO.	DESCRIPTION	SYMBOL					
										THE TECHNICAL MATERIEL CORP. MAMARONECK, NEW YORK LETTERING, REACTOR and POTENTIOMETER BRACKET						
									STOCK SIZE							
									MATERIAL							
ISSUE	ITEM	CHANGED FROM	DATE	CH. NO.	DRAFTS	CHECKER	ENG. APP.			16/23/58						
TOLERANCES			SCALE: FULL													
DEC. DIM. ±			MAXIMUM ALLOWABLE TOLERANCES HAVE BEEN DETERMINED AND ANY DEVIATIONS WILL BE CAUSE FOR REJECTION. REMOVE ALL BURRS AND SHARP EDGES													
FRAC. DIM. ±																
ANGULAR DIM. ±																
								TYPE & TEMPER	HEAT TREAT. SPEC.	DRAWN	CHECKED	FINAL APPR VAL				
								FINISH & SPEC. NO.		ELEC. DES. APP.	MECH. DES. APP.	LD-433				

REQ. PER UNIT	USED ON			LD-434
	MODEL	ASS'Y. NO.	DATE	
1	CFA-1		7-23-58	
1	CFA-L		7-23-58	
1	CFA-1LB		7-23-58	

13 RA 607



MARKING PROCESS: AS PER T M C SPECIFICATION S-727

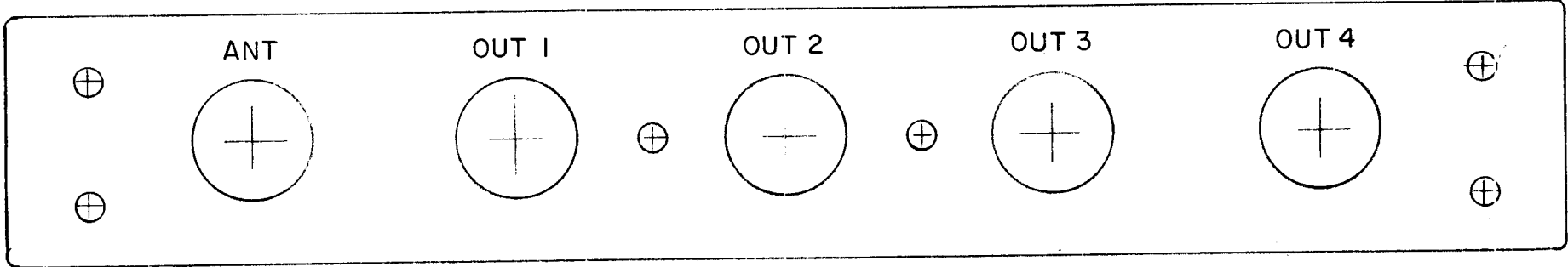
LETTERING: 1/8 HIGH BLACK, GOTHIC LOCATED AS SHOWN.

Ref-(1)MS-275

								REQ. ITEM	PART NO.	DESCRIPTION	SYMBOL					
										THE TECHNICAL MATERIEL CORP. MAMARONECK. NEW YORK						
									STOCK SIZE	LETTERING, TUBE BRACKET						
									MATERIAL							
ISSUE	ITEM	CHANGED FROM	DATE	CH. NO.	DRAFTS	CHECKER	ENG. APP.			167/23/58	<i>JWA</i>	<i>ARB</i>				
TOLERANCES			SCALE: FULL							DRAWN	CHECKED	FINAL APPROVAL				
DEC. DIM. ±			MAXIMUM ALLOWABLE TOLERANCES HAVE BEEN DETERMINED AND ANY DEVIATIONS WILL BE CAUSE FOR REJECTION. REMOVE ALL BURRS AND SHARP EDGES													
FRAC. DIM. ±																
AN ULAR DIM. ±																
									FINISH & SPEC. NO.	ELEC. DES. APP.	MECH. DES. APP.	LD-434				

REQ. PER UNIT	USED ON		
	MODEL	ASS'Y. NO.	DATE
1	HFD-1		7-24-58
1	LFD-1		7-24-50

LD-435



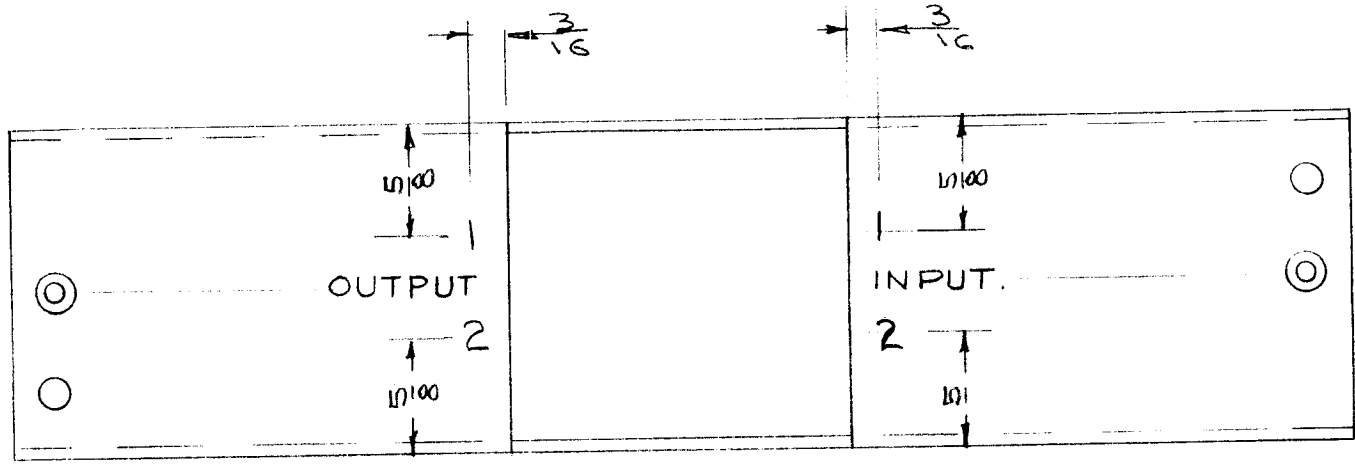
MARKING PROCESS: AS PER T M C SPECIFICATION S-727.

LETTERING: 1/8 HIGH BLACK, GOTHIC
LOCATED AS SHOWN.

REF-(2)MS-906

								REQ. ITEM	PART NO.	DESCRIPTION	SYMBOL					
										THE TECHNICAL MATERIEL CORP. MAMARONECK. NEW YORK						
								STOCK SIZE		LETTERING, REAR PANEL						
								MATERIAL								
ISSUE	ITEM	CHANGED FROM	DATE	CH. NO.	DRAFTS	CHECKER	ENG. APP.									
TOLERANCES			SCALE:							16/24/58	file	dh				
DEC. DIM. ±			MAXIMUM ALLOWABLE TOLERANCES HAVE BEEN DETERMINED AND ANY DEVIATIONS WILL BE CAUSE FOR REJECTION. REMOVE ALL BURRS AND SHARP EDGES					TYPE & TEMPER		HEAT TREAT. SPEC.	DRAWN	CHECKED	FINAL APPROVAL			
FRAC. DIM. ±																LD-435
ANGULAR DIM. ±												FINISH & SPEC. NO.		ELEC. DES. APP.	MECH. DES. APP.	

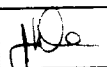

REQ. PER UNIT	USED ON			LD-44
	MODEL	ASS'Y. NO.	DATE	
1	A-1532/PVC		7-28-58	



MARKING PROCESS: AS PER TMC SPECIFICATION S-727

LETTERING: 1/8 HIGH BLACK, GOTHIC LOCATED AS SHOWN.

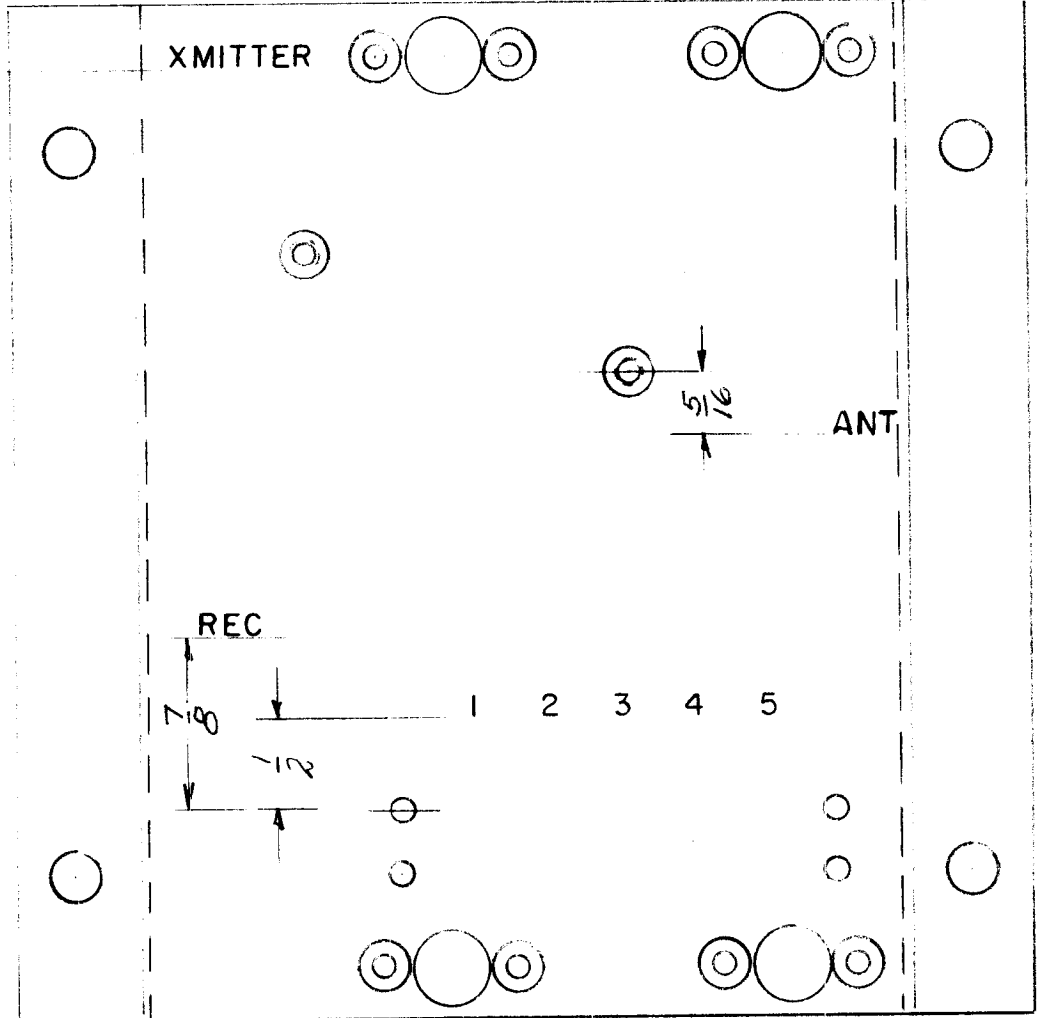
Ref: (2) MS-1297

								REQ. ITEM	PART NO.	DESCRIPTION	SYMBOL		
										THE TECHNICAL MATERIEL CORP. MAMARONECK, NEW YORK			
								STOCK SIZE		LETTERING, COVER			
								MATERIAL					
ISSUE	ITEM	CHANGED FROM	DATE	CH. NO.	DRAFTS	CHECKER	ENG. APP.	16 7/28/58		 			
TOLERANCES			SCALE:					TYPE & TEMPER		HEAT TREAT. SPEC.	DRAWN	CHECKED	FINAL APPROVAL
DEC. DIM. ± FRAC. DIM. ± ANGULAR DIM. ±			MAXIMUM ALLOWABLE TOLERANCES HAVE BEEN DETERMINED AND ANY DEVIATIONS WILL BE CAUSE FOR REJECTION. REMOVE ALL BURRS AND SHARP EDGES										LD-441
								FINISH & SPEC. NO.		ELEC. DES. APP. MECH. DES. APP.			

RE. PER UNIT	USED ON		
	MODEL	ASS'Y. NO.	DATE
/	TRL-1/70R		8/13/53
/	TRL-2/50R		

LD-445

5/16



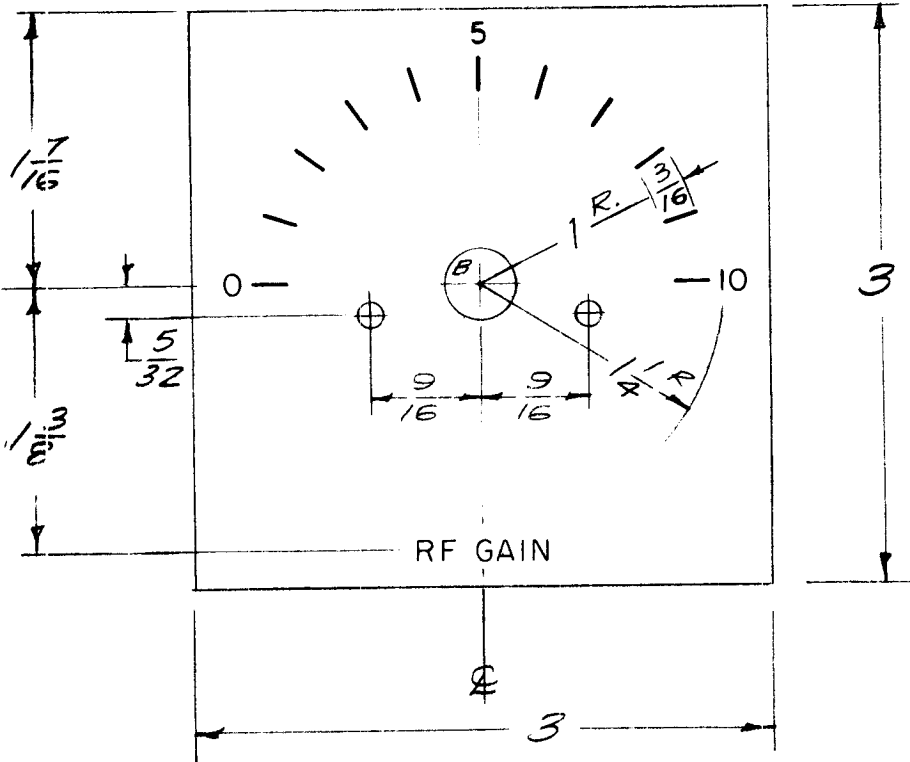
MARKING PROCESS: AS PER TMC SPECIFICATION S-727
 LETTERING: 1/8 HIGH BLACK, GOTHIC
 LOCATED AS SHOWN.

Ref. TMC MS-1313

ISSUE	ITEM	CHANGED FROM	DATE	CH. NO.	DRAFTS	CHECKER	ENG. APP.	REQ. ITEM	PART NO.	DESCRIPTION	SYMBOL				
										THE TECHNICAL MATERIEL CORP. MAMARONECK. NEW YORK LETTERING, CHASSIS, RELAY MODEL TRL					
TOLERANCES			SCALE: <i>CR</i>												
DEC. DIM. ±			MAXIMUM ALLOWABLE TOLERANCES HAVE BEEN DETERMINED AND ANY DEVIATIONS WILL BE CAUSE FOR REJECTION. REMOVE ALL BURRS AND SHARP EDGES												
FRAC. DIM. ±															
ANGULAR DIM. ±															
								TYPE & TEMPER	HEAT TREAT. SPEC.	DRAWN	CHECKED	FINAL APPROVAL			
								FINISH & SPEC. NO.		ELEC. DES. APP.	MECH. DES. APP.	LD-445			

REQ. PER UNIT	USED ON		
	MODEL	ASS'Y. NO.	DATE
1	RSC-3 MOD KIT		LD-457

⊘ Note - Calibration Lines 18° Apart



A - $\frac{1}{8}$ (.125) D. 2 Req
 B - $\frac{25}{64}$ (.390) D 1 Req.

DIAL TO HAVE ADHESIVE BACKING

FINISH
 S101 Caustic Dip
 S114 Zinc Chromate Primer 2 Front Only
 S115 Smooth Grey Enamel 1

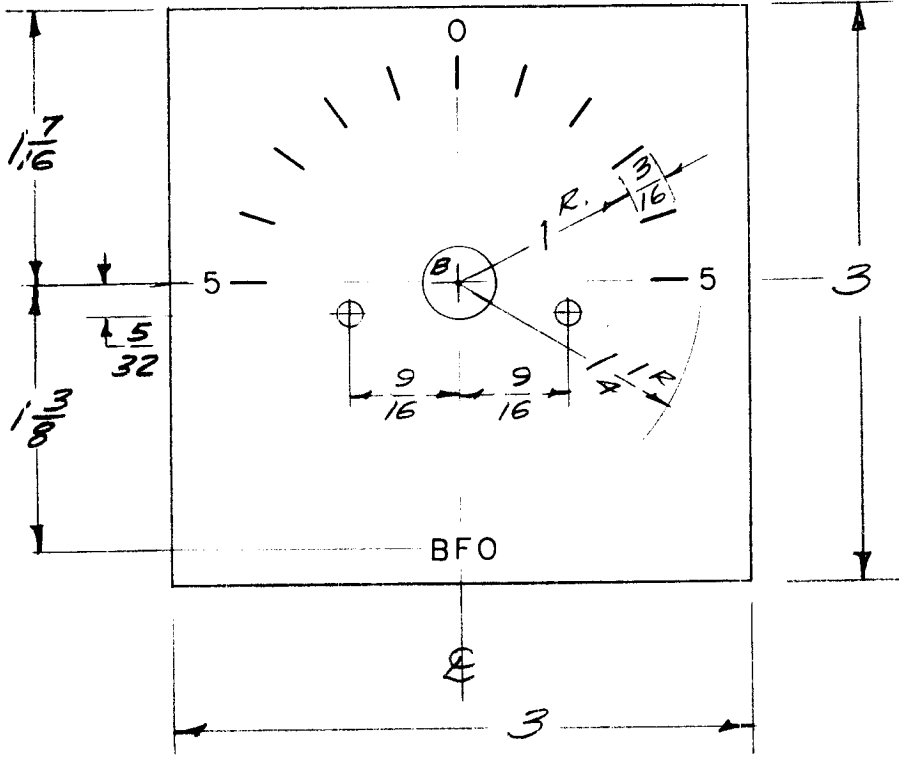
Calibration Lines, Letters, & Numerals to be Engraved, .005 Deep X .015 Wide Stroke, White Filled. Letters & Numerals to be 1/8 high Gothic

REQ.	ITEM	PART NO.	DESCRIPTION		SYMBOL		
		3 x 3 x .020 Thk	THE TECHNICAL MATERIEL CORP.				
		STOCK SIZE	MAMARONECK. NEW YORK				
		Aluminum	DIAL, RF GAIN				
		MATERIAL					
ISSUE	ITEM	CHANGED FROM	DATE	CH. NO.	DRAFTS	CHECKER	ENG. APP.
TOLERANCES			SCALE: FULL				
DEC. DIM. ±			MAXIMUM ALLOWABLE TOLERANCES HAVE BEEN DETERMINED AND ANY DEVIATIONS WILL BE CAUSE FOR REJECTION. REMOVE ALL BURRS AND SHARP EDGES				
FRAC DIM. ± 1/64							
ANGULAR DIM. ±							
TYPE & TEMPER		HEAT TREAT. SPEC.	DRAWN	CHECKED	FINAL APPROVAL		
FINISH & SPEC. NO.		ELEC. DES. APP.	MECH. DES. APP.	LD-457			

REQ. PER UNIT	USED ON		
	MODEL	ASS'Y. NO.	DATE
1	R3C-3 MOD. KIT		

LD-458

⊕ Note - Calibration Lines 18° Apart



A - $\frac{1}{8}$ (.125) D 2 Req
 B - $\frac{25}{64}$ (.390) D 1 Req

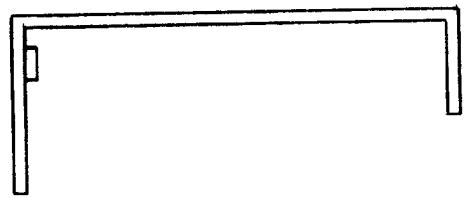
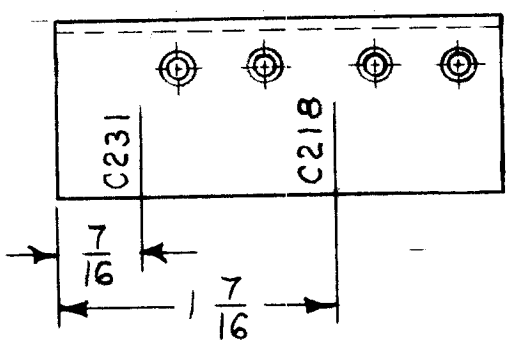
DIAL TO HAVE ADHESIVE BACKING.

FINISH
 5101 caustic Dip
 5114 Zinc Chromate Primer } Front
 5115 Smooth Grey Enamel } Only.

Calibration Lines, Letters, & Numerals to be Engraved, .005 Deep X .015 Wide Stroke, White Filled. Letters & Numerals to be 1/8 high, Gothic

REQ.	ITEM	PART NO.	DESCRIPTION	SYMBOL					
		3 x 3 x .020 THK	THE TECHNICAL MATERIEL CORP. MAMARONECK, NEW YORK						
		STOCK SIZE							
		ALUMINUM		DIAL, BFO					
		MATERIAL							
ISSUE	ITEM	CHANGED FROM	DATE	CH. NO.	DRAFTS	CHECKER	ENG. APP.		
TOLERANCES			SCALE: FULL						
DEC. DIM. ±			MAXIMUM ALLOWABLE TOLERANCES HAVE BEEN DETERMINED AND ANY DEVIATIONS WILL BE CAUSE FOR REJECTION. REMOVE ALL BURRS AND SHARP EDGES						
FRAC. DIM. ± 1/64									
ANGULAR DIM. ±									
TYPE & TEMPER		HEAT TREAT. SPEC.		DRAWN		CHECKED		FINAL APPROVAL	
FINISH & SPEC. NO.		ELEC. DES. APP.		MECH. DES. APP.		LD-458			

REQ. PER UNIT	USED ON			LD-469	A
	MODEL	ASS'Y. NO.	DATE		
1	RTF-2	MULT.	11-26-58		



MARKING PROCESS: AS PER TMC SPECIFICATION S-727.

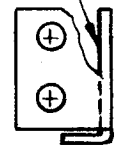
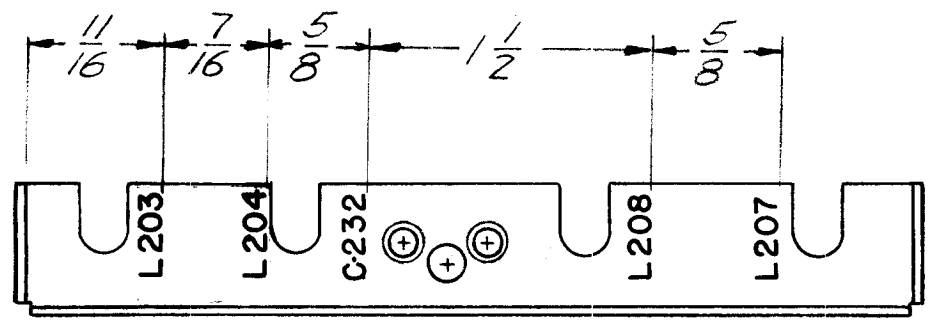
LETTERING: 1/8 HIGH BLACK, GOTHIC LOCATED AS SHOWN.

REF: MS-1425

							REQ.	ITEM	PART NO.	DESCRIPTION	SYMBOL	
									THE TECHNICAL MATERIEL CORP.			
									MAMARONECK, NEW YORK			
									LETTERING, FRONT BRACKET			
									BAND SWITCH			
A		ADD. DIM., & CHG. HOLES	11/17/70	20067	RZ	CD				J. C. BIELE		
ISSUE	ITEM	CHANGED FROM	DATE	CH. NO.	DRAFTS	CHECKER	ENG. APP.					
TOLERANCES			SCALE:				TYPE & TEMPER		HEAT TREAT. SPEC.	DRAWN	CHECKED	FINAL APPROVAL
DEC. DIM. ± FRAC. DIM. ± ANGULAR DIM. ±			MAXIMUM ALLOWABLE TOLERANCES HAVE BEEN DETERMINED AND ANY DEVIATIONS WILL BE CAUSE F R REJECTION: REMOVE ALL BURRS AND SHARP EDGES				FINISH & SPEC. N		ELEC. DES. APP	MECH. DES. APP		LD-469 A

REQ. PER UNIT	USED ON			LD-472	B
	MODEL	ASS'Y. NO.	DATE		
1	RTF-2	MULT	12-3-58		

LETTERING TO BE DONE ON THIS SURFACE

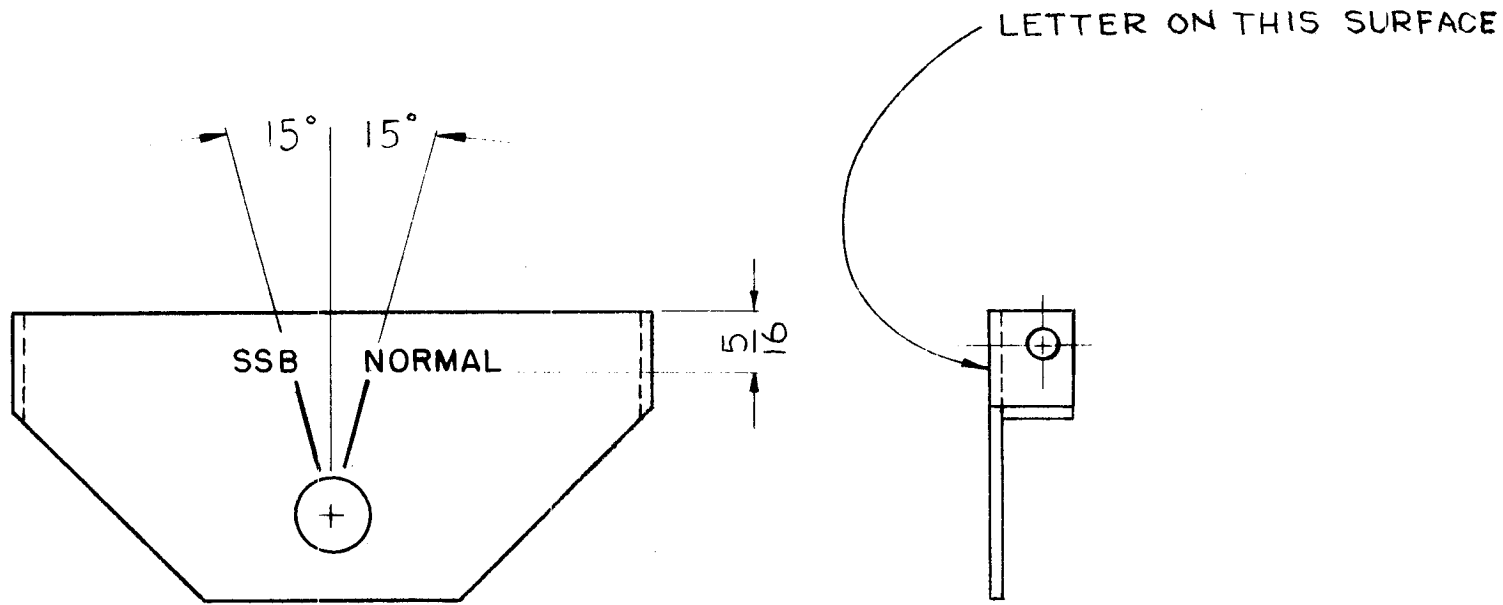


LETTERING TO BE 1/8 HIGH BLACK GOTHIC
MARKING PROCESS: AS PER TMC SPECIFICATION S-727.

REF-TMC DWG NO. ~ MS-1419

							REQ.	ITEM	PART NO.	DESCRIPTION	SYMBOL		
										THE TECHNICAL MATERIEL CORP. MAMARONECK, NEW YORK			
B	ADDED DIMENSIONS		1/15/70	20064	GE	CW.	STOCK SIZE			COIL BRACKET, LETTERING			
A	1	L203 & L204 Relocated	5/26/59	1056	J.C.B.	JCB	MATERIAL						
ISSUE	ITEM	CHANGED FROM	DATE	CH. NO.	DRAFTS	CHECKER	ENG. APP.						
TOLERANCES			SCALE:							J.C. BIELE			
DEC. DIM. ± FRAC. DIM. ± ANGULAR DIM. ±			MAXIMUM ALLOWABLE TOLERANCES HAVE BEEN DETERMINED AND ANY DEVIATIONS WILL BE CAUSE FOR REJECTION. REMOVE ALL BURRS AND SHARP EDGES				TYPE & TEMPER	HEATTREAT. SPEC.	DRAWN	CHECKED	FINAL APPROVAL		
							FINISH & SPEC. N .			ELEC. DES. APP	MECH. DES. APP	LD-472	B

REQ. PER UNIT	USED ON			LD-474
	MODEL	ASS'Y. NO.	DATE	
1	RTF-2	MULT.	11-21-58	



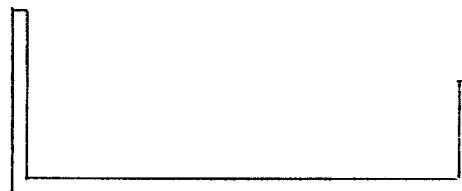
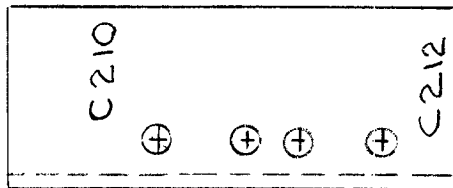
MARKING PROCESS: AS PER T M C SPECIFICATION S-727.

LETTERING: 1/8 HIGH BLACK, GOTHIC
LOCATED AS SHOWN.

REF: MS-1417

ISSUE	ITEM	CHANGED FROM	DATE	CH. NO.	DRAFTS	CHECKER	ENG. APP.	REQ.	ITEM	PART NO.	DESCRIPTION	SYMBOL
											THE TECHNICAL MATERIEL CORP. MAMARONECK, NEW YORK	
											LETTERING	
											BRACKET, SWITCH SUPPORT	
											J.C. BIELE	
											DRAWN	checked
												LD-474
											ELEC. DES. APP	

REQ. PER UNIT	USED ON			LD-476
	MODEL	ASS'Y. NO.	DATE	
1	RTF-2	MULT	12-5-38	



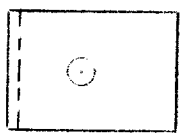
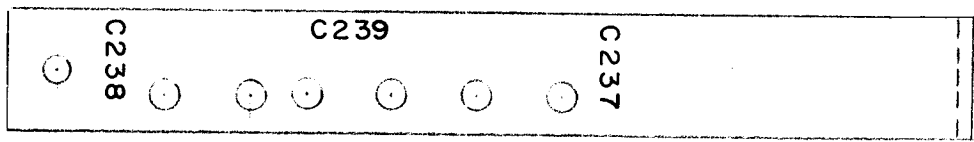
MARKING PROCESS: AS PER TMC SPECIFICATION S-727.

LETTERING: 1/8 HIGH BLACK, GOTHIC LOCATED AS SHOWN.

REF: MS-1418

ISSUE	ITEM	CHANGED FROM	DATE	CH. NO.	DRAFTS	CHECKER	ENG. APP.	REQ.	ITEM	PART NO.	DESCRIPTION	SYMBOL	
											THE TECHNICAL MATERIEL CORP. MAMARONECK, NEW YORK LETTERING, BRACKET BAND SWITCH TREAT		
										STOCK SIZE			
										MATERIAL			
TOLERANCES			SCALE:										
DEC. DIM. ± FRAC. DIM. ± ANGULAR DIM. ±			MAXIMUM ALLOWABLE TOLERANCES HAVE BEEN DETERMINED AND ANY DEVIATIONS WILL BE CAUSE FOR REJECTION. REMOVE ALL BURRS AND SHARP EDGES					TYPE & TEMPER	HEATTREAT. SPEC.	DRAWN	CHECKED	FINAL APPROVAL	
								FINISH & SPEC. NO.	ELEC. DES. APP	MECH. DES. APP		LD-476	

REQ. PER UNIT	USED ON			LD-480
	MODEL	ASS'Y. NO.	DATE	
1	RTF-2	MULTI	12/22/58	



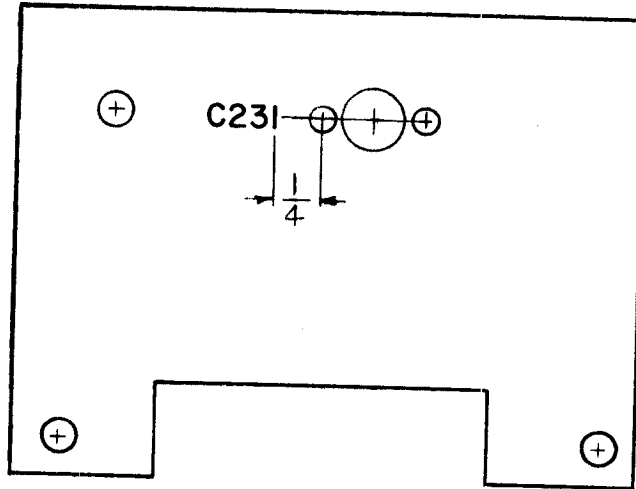
STAMPING 1/8 HIGH BLACK
 GOTHIC
 MARKING PROCESS: AS PER TMC SPECIFICATION S-727

REF. TMC # MS-1444

ISSUE	ITEM	CHANGED FROM	DATE	CH. NO.	DRAFTS	CHECKER	ENG. APP.	REQ.	ITEM	PART NO.	DESCRIPTION	SYMBOL						
										CP	THE TECHNICAL MATERIEL CORP.							
										STOCK SIZE	MAMARONECK, NEW YORK							
										CP	LETTERING, TRIMMER BRACKET							
										MATERIAL								
										CP	12/22/58							
										CP	<table border="1"> <tr> <td>DRAWN</td> <td>CHECKED</td> <td>FINAL APPROVAL</td> </tr> <tr> <td></td> <td></td> <td>LD-480</td> </tr> </table>	DRAWN	CHECKED	FINAL APPROVAL			LD-480	
DRAWN	CHECKED	FINAL APPROVAL																
		LD-480																
										TYPE & TEMPER	ELEC. DES. APP							
										HEAT TREAT. SPEC.	MECH. DES. APP							
										FINISH & SPEC. NO.								

REQ. PER UNIT	USED ON			LD-481	A
	MODEL	ASS'Y. NO.	DATE		
	RFB-1	I.P.A.	1-3-59		
	RFC-1		11-22-60		

STAMP ON THIS SURFACE



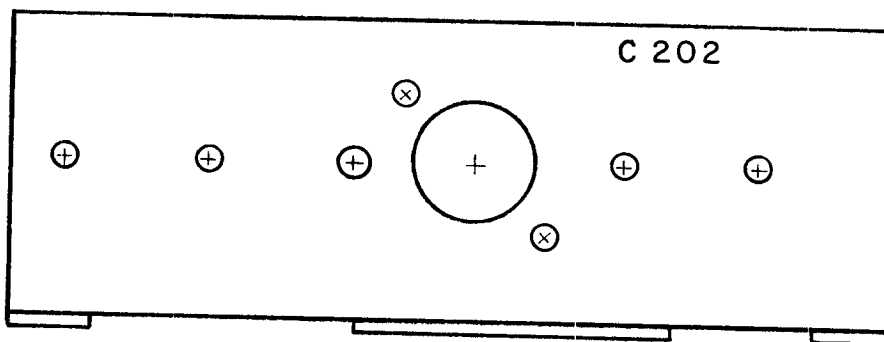
ALL LETTERING 1/8 HIGH GOTHIC, BLACK.
MARKING PROCESS: AS PER TMC SPECIFICATION S-727.

REF: MS-1435 (1)

								REQ.	ITEM	PART NO.	DESCRIPTION			SYMBOL	
								STOCK SIZE			THE TECHNICAL MATERIEL CORP. MAMARONECK, NEW YORK				
A	1	C231 RELOCATED	2-18-63	8302	<i>[Signature]</i>	<i>[Signature]</i>	<i>[Signature]</i>				LETTERING, BRACKET TRIMMER				
ISSUE	ITEM	CHANGED FROM	DATE	CH. NO.	DRAFTS	CHECKER	ENG. APP.	MATERIAL							
TOLERANCES			SCALE:								J.C. BIELE	<i>[Signature]</i>	<i>[Signature]</i>		
DEC. DIM. ± FRAC. DIM. ± ANGULAR DIM. ±			MAXIMUM ALLOWABLE TOLERANCES HAVE BEEN DETERMINED AND ANY DEVIATIONS WILL BE CAUSE FOR REJECTION. REMOVE ALL BURRS AND SHARP EDGES					TYPE & TEMPER	HEATTREAT. SPEC.	DRAWN		CHECKED	FINAL APPROVAL		
								FINISH & SPEC. NO.			ELEC. DES. APP	MECH. DES. APP	LD-481 A		

REQ. PER UNIT	USED ON			LD-482
	MODEL	ASS'Y. NO.	DATE	
1	G.P.T. 10,000	I. P. A.	1-3-59	

STAMP ON THIS SURFACE



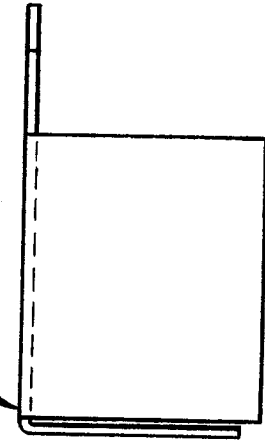
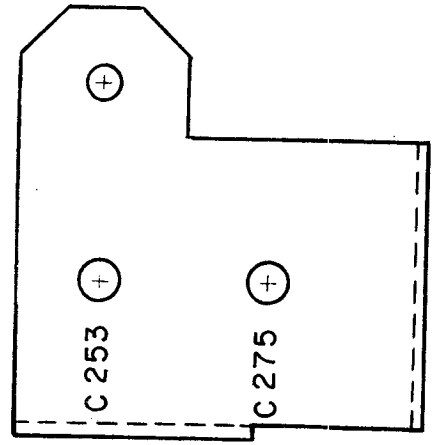
MARKING PROCESS: AS PER TMC SPECIFICATION S-727
 ALL LETTERING 1/8 HIGH BLACK GOTHIC.

REF: MS-1441

ISSUE	ITEM	CHANGED FROM	DATE	CH. NO.	DRAFTS	CHECKER	ENG. APP.	REQ. ITEM	PART NO.	DESCRIPTION	SYMB L	
										THE TECHNICAL MATERIEL CORP. MAMARONECK, NEW YORK		
									STOCK SIZE	LETTERING, BRACKET, SWITCH MOUNTING.		
									MATERIAL	J. C. BIELE		
TOLERANCES			SCALE:								<i>[Signature]</i>	
DEC. DIM. ± FRAC. DIM. ± ANGULAR DIM. ±			MAXIMUM ALLOWABLE TOLERANCES HAVE BEEN DETERMINED AND ANY DEVIATIONS WILL BE CAUSE FOR REJECTION. REMOVE ALL BURRS AND SHARP EDGES					TYPE & TEMPER	HEAT TREAT. SPEC.	DRAWN	CHECKED	FINAL APPROVAL
								FINISH & SPEC. NO.			<i>[Signature]</i>	LD-482
										ELEC. DES. APP	MECH. DES. APP	

REQ. PER UNIT	USED ON			LD-483
	MODEL	ASS'Y. NO.	DATE	
1	G.P.T.10,000	I. P. A.	1-3-59	

STAMP ON THIS SURFACE



MARKING PROCESS: AS PER T M C SPECIFICATION S-727

ALL LETTERING 1/8 HIGH BLACK GOTHIC.

REF: MS-1454

REQ.	ITEM	PART NO.					DESCRIPTION		SYMB L		
							THE TECHNICAL MATERIEL CORP. MAMARONECK, NEW YORK				
		STOCK SIZE					LETTERING, BRACKET NETURALIZER				
		MATERIAL									
ISSUE	ITEM	CHANGED FROM	DATE	CH. NO.	DRAFTS	CHECKER	ENG. APP.				
TOLERANCES			SCALE:								
DEC. DIM. ±			MAXIMUM ALLOWABLE TOLERANCES HAVE BEEN DETERMINED AND ANY DEVIATIONS WILL BE CAUSE FOR REJECTION. REMOVE ALL BURRS AND SHARP EDGES			TYPE & TEMPER		HEAT TREAT. SPEC.			
FRAC. DIM. ±						FINISH & SPEC. NO.		ELEC. DES. APP		MECH. DES. APP	
ANGULAR DIM. ±											
						J.C. BIELE	<i>JAB</i>	FINAL APPROVAL			
						DRAWN	<i>ATB</i>	LD-483			