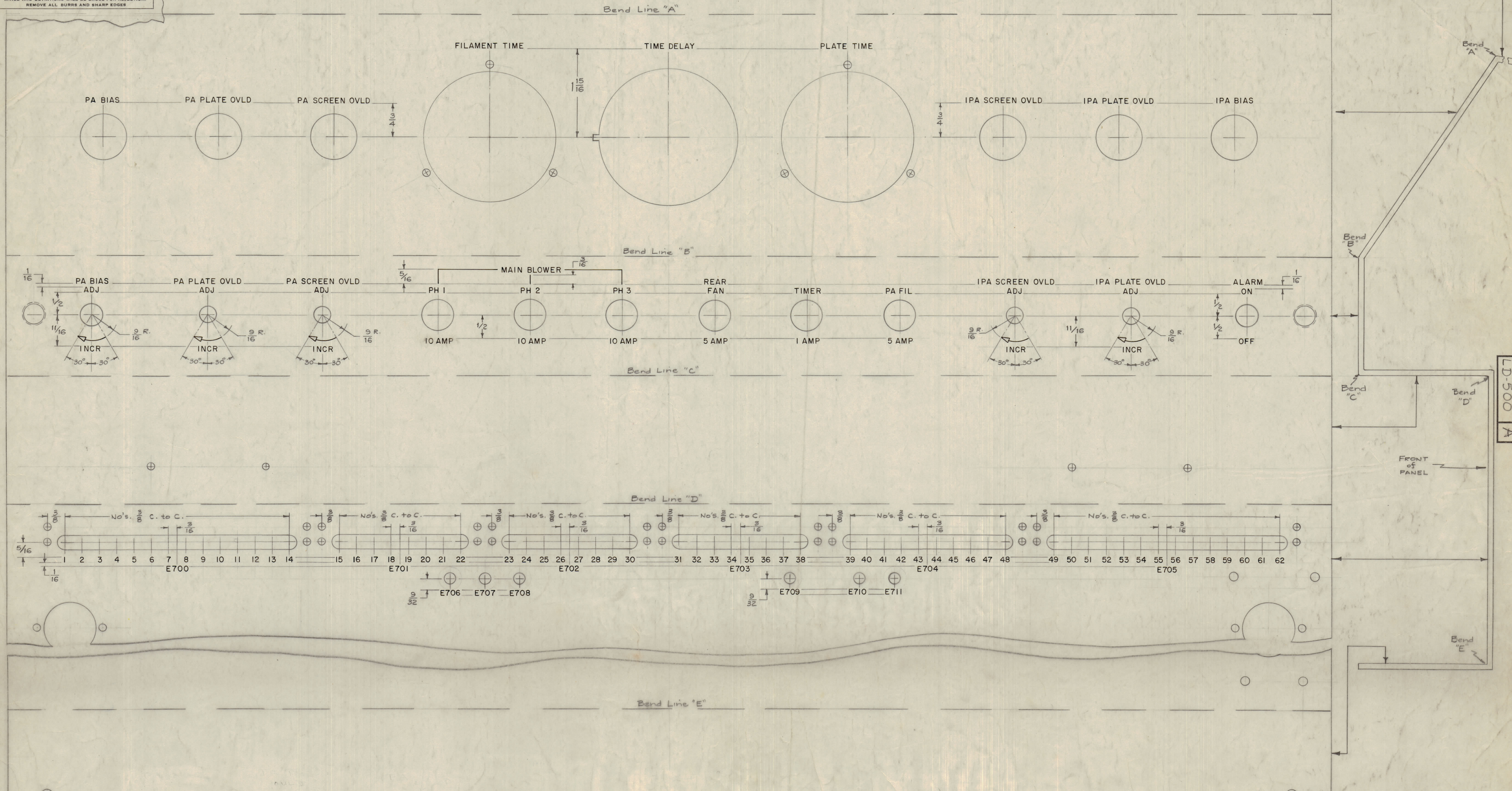


IT IS FOUND DESIRABLE TO CHANGE ANY TOLERANCE OR OTHER DETAIL SPECIFIED ON THIS DRAWING NOTIFY THE PURCHASER PROMPTLY.  
 MAXIMUM ALLOWABLE TOLERANCES HAVE BEEN DETERMINED AND DEVIATIONS WILL BE CAUSE FOR REJECTION. REMOVE ALL BURRS AND SHARP EDGES



LD-500 A

REVISION - ADDITIONAL ENGRAVING ADDED, SHOWN IN FLAT VIEW	1/16/59	16	AW	AW
ISSUE ITEM	CHANGED FROM	DATE	CN. NO.	DRAFTS CHECKER ENG. APP.
TOLERANCES		SCALE: FULL		
ALL DEC. DIM. ±	FRAC. DIM. ± 1/64	DRILL, PUNCH, COMMERCIAL STOCK SIZES AND MANUFACTURERS TOLERANCES ARE NOT INCLUDED.		
OTHERS	ANGULAR DIM. ±			

All Engraving to be White Filled.  
 All Lettering to be 1/8 high Gothic.  
 DEPTH of STROKE WIDTH of STROKE  
 LETTERING - .010 .020  
 LINEWORK - .010 .015  
 ARROWHEADS - .010 (Approx. Size Shown)

FRONT VIEW SHOWN  
 Note - Panel is shown in a "Flattened" View to clearly show all Lettering.

1	GPT-10K	RELAY DECK (T1-106)	1	4-7-59
REQ PER UNIT	MODEL	PROJECT NO.	ASSY. NO.	DATE
USED ON				

REF - MS-1499 (roll)			
REQ. ITEM	PART NO.	DESCRIPTION	SYMBOL
THE TECHNICAL MATERIEL CORP. MAMARONECK, NEW YORK			
ENGRAVING, FRONT PANEL, RELAY PANEL (1T-106)			
STOCK SIZE			
MATERIAL	WEIGHT PER PC.		
TYPE & TEMPER	16 4-7-59	AW	
HEAT TREAT. SPEC.	CHECKED	ELEC. DES. APP.	MECH. DES. APP.
FINISH & SPEC. NO.	FINAL APPROVAL		LD-500 A