

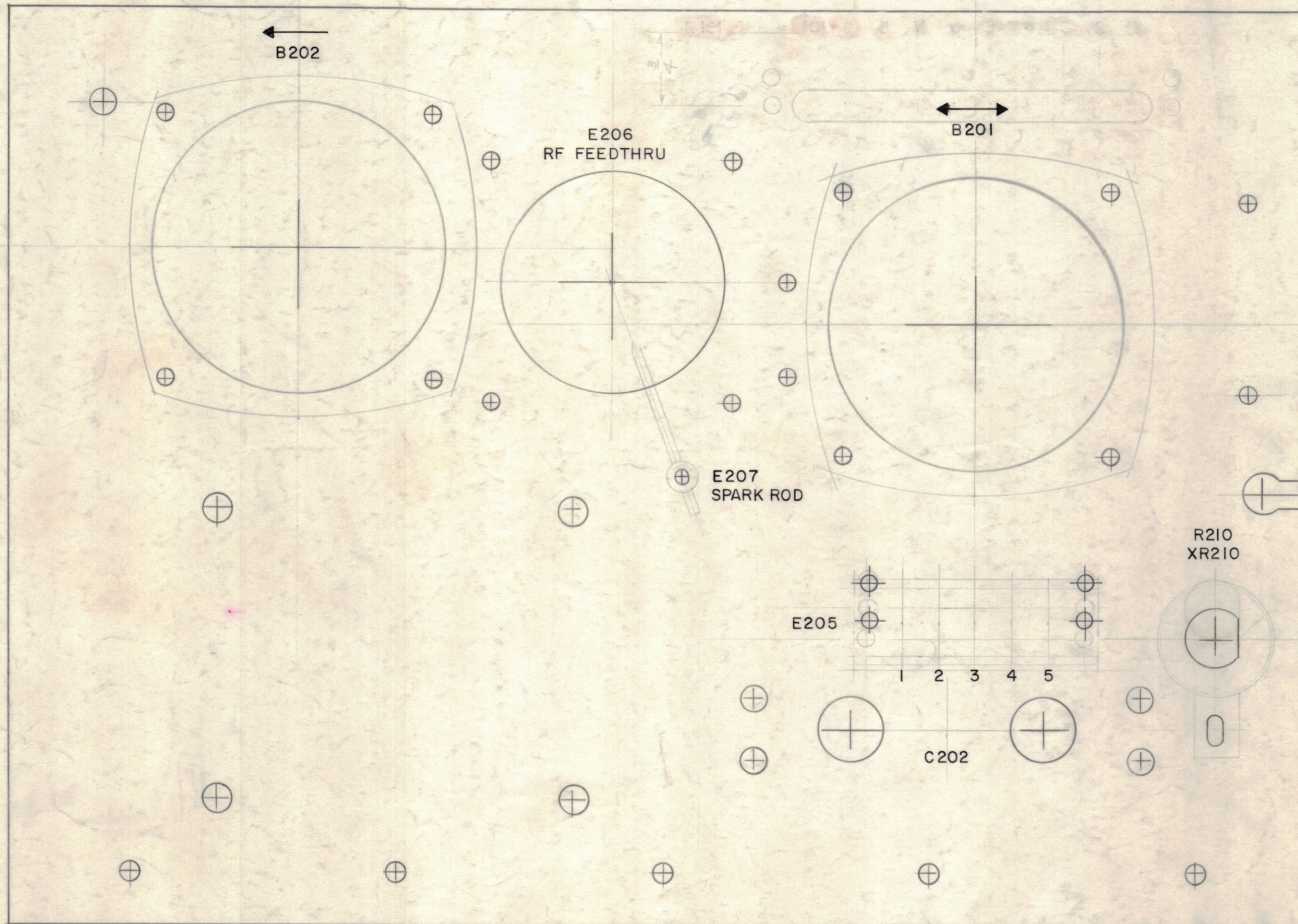
IF IT IS FOUND DESIRABLE TO CHANGE ANY TOLERANCE OR OTHER DETAIL SPECIFIED ON THIS DRAWING NOTIFY THE PURCHASER PROMPTLY.

MAXIMUM ALLOWABLE TOLERANCES HAVE BEEN DETERMINED AND DEVIATIONS WILL BE CAUSE FOR REJECTION. REMOVE ALL BURRS AND SHARP EDGES.

NOTICE TO PERSONS RECEIVING THIS DRAWING

THE TECHNICAL MATERIEL CORPORATION claims proprietary right in the material disclosed hereon. This drawing is issued in confidence for engineering information only and may not be reproduced or used to manufacture anything shown hereon without permission from THE TECHNICAL MATERIEL CORPORATION to the user. This drawing is loaned for your assistance and is subject to recall at any time.

Property of:
THE TECHNICAL MATERIEL CORPORATION
MAMARONECK, NEW YORK



LD-612 B

LETTERING TO BE 1/8 HIGH BLACK GOTHIC

MARKING PROCESS: AS PER TMC SPECIFICATION S-727

REF. TMC MS-1818 - 4

B	1	RELOCATED MTG. HOLES FOR E205 (REF MS1818)	1/4/69	10651	JD	JK	JK
A	2	Added All Other Lettering Shown	10/1/59	1359	16	JK	JK
	1	Dele. E101 & #1 thru 10					

ISSUE	ITEM	CHANGED FROM	DATE	CH. NO.	DRAFTS	CHECKER	ENG. APP.
TOLERANCES		SCALE:					
ALL OTHERS	DEC. DIM. ±	DRILL, PUNCH, COMMERCIAL STOCK SIZES AND MANUFACTURERS TOLERANCES ARE NOT INCLUDED.					
	FRAC. DIM. ±						
	ANGULAR DIM. ±						

REQ.	ITEM	PART NO.	DESCRIPTION	SYMBOL
		CP	THE TECHNICAL MATERIEL CORP. MAMARONECK, NEW YORK	
			STOCK SIZE	
			LETTERING, PLATE MTG.	
			MATERIAL	
			WEIGHT PER PC.	
			FRONT	
			TYPE & TEMPER	
			DRAWN	
			ELEC. DES. APP.	
			MECH. DES. APP.	
			HEAT TREAT. SPEC.	
			CHECKED	
			FINAL APPROVAL	
				LD-612 B
			FINISH & SPEC. NO.	

1	TU-2	ATS-50/70		8-23-59
REQ. PER UNIT	MODEL	PROJECT NO.	ASSY. NO.	DATE