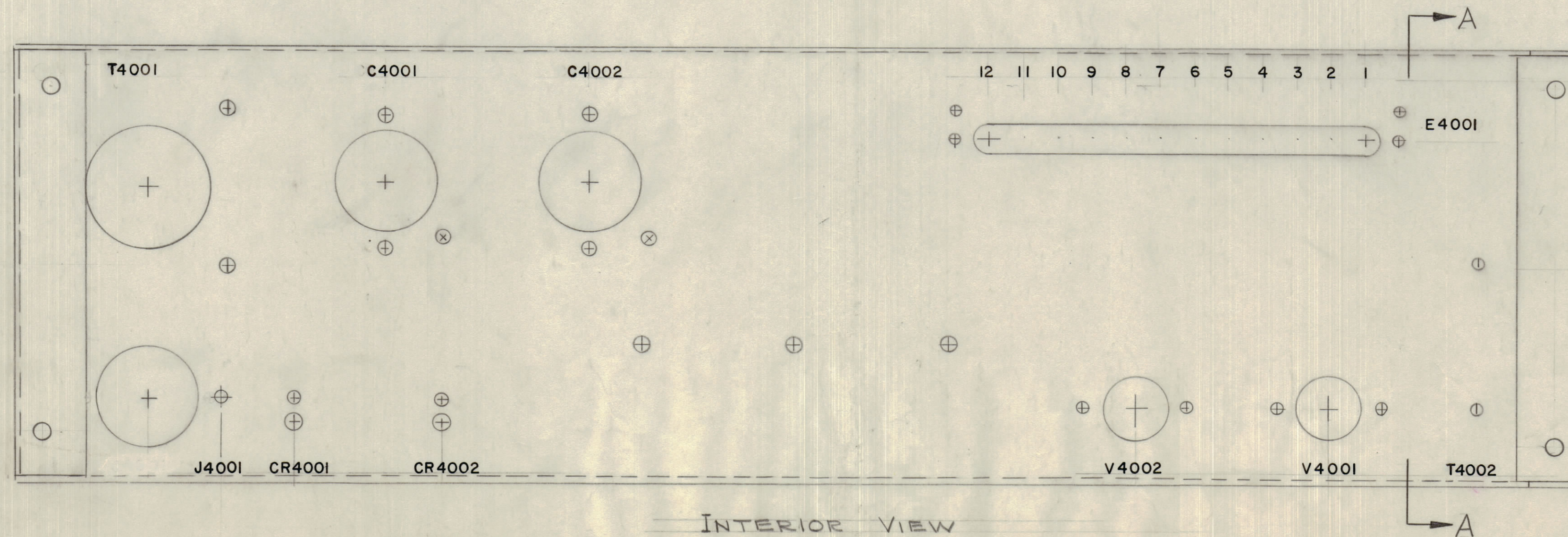
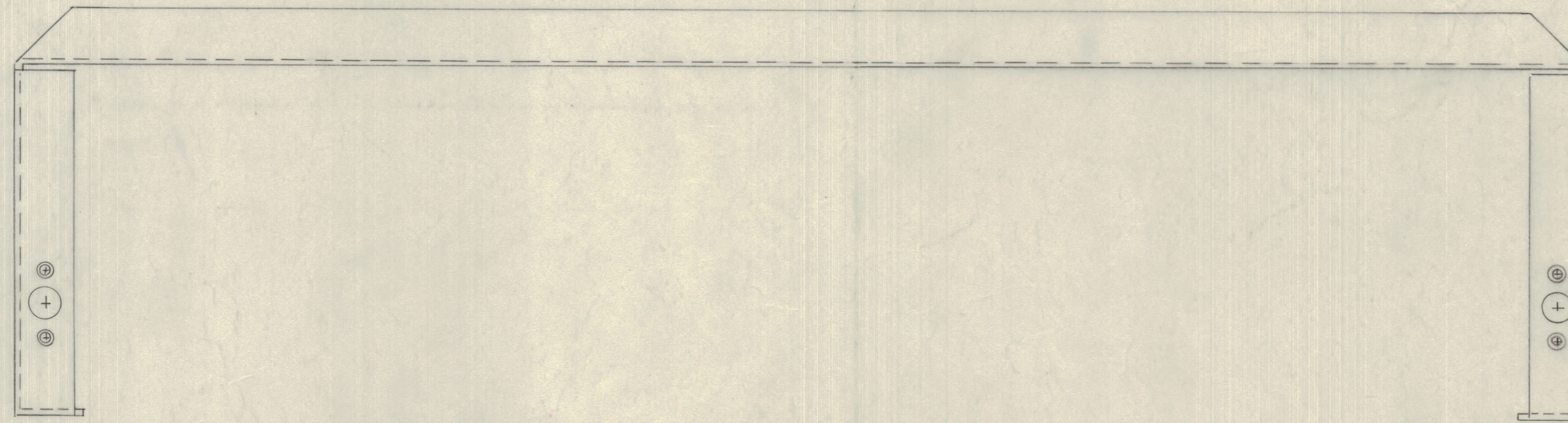
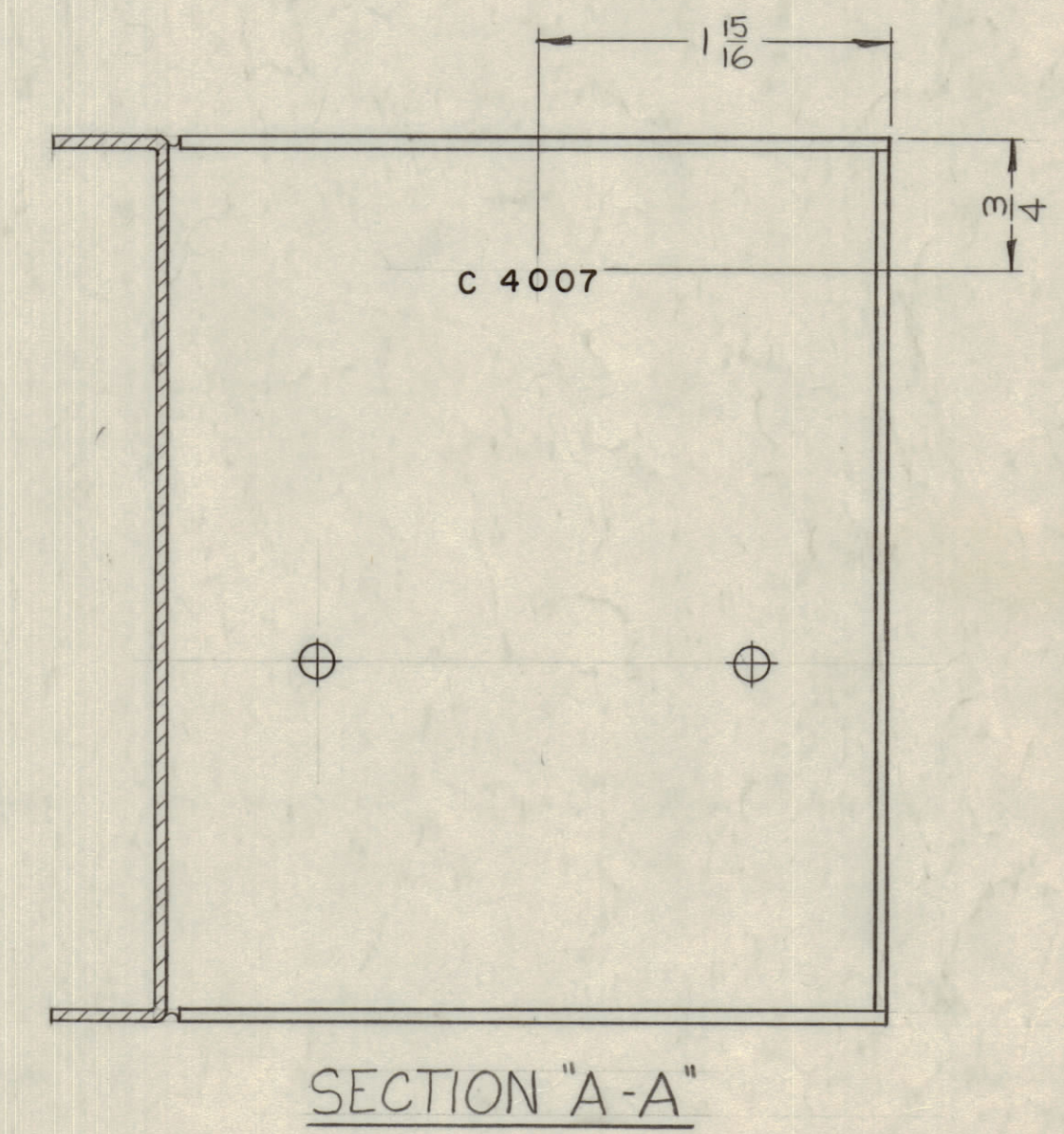
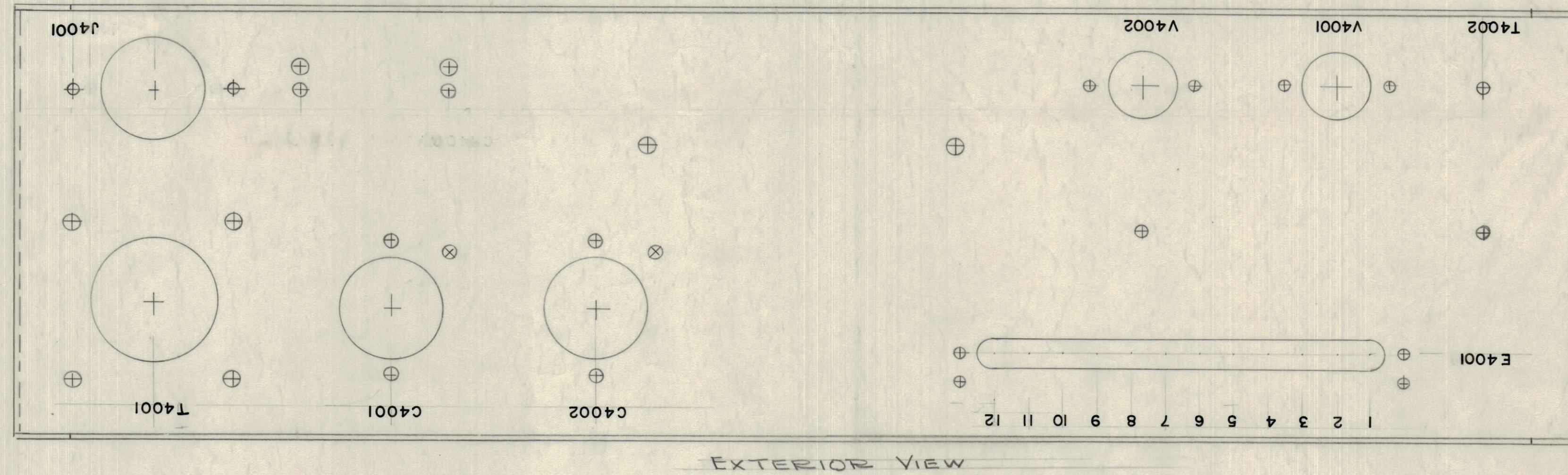


IF IT IS FOUND DESIRABLE TO CHANGE ANY TOLERANCE OR OTHER DETAIL SPECIFIED ON THIS DRAWING NOTIFY THE PURCHASER PROMPTLY.  
 MAXIMUM ALLOWABLE TOLERANCES HAVE BEEN DETERMINED AND DEVIATIONS WILL BE CAUSE FOR REJECTION. REMOVE ALL BURRS AND SHARP EDGES

**NOTICE TO PERSONS RECEIVING THIS DRAWING**  
 THE TECHNICAL MATERIEL CORPORATION claims property right in the material disclosed herein. This drawing is issued in confidence for engineering information only and may not be reproduced or used to manufacture anything shown hereon without permission from THE TECHNICAL MATERIEL CORPORATION to the user. This drawing is loaned for mutual assistance and is subject to recall at any time.  
 Property of:  
 THE TECHNICAL MATERIEL CORPORATION  
 MAMARONECK, NEW YORK



All Lettering 1/8 high Black Gothic  
 MARKING PROCESS: AS PER T.M.C SPECIFICATION S-727

C	RELOCATED J4001 LETT.	9-5-72	20889	GE	EP	EP	
B	ADDED SECT A-A	7-19-63	9593	AK	AK	AK	
A	E4001 WAS E4000 (EXT. VIEW)	9/8/61	5524	HA	AK	AK	
	T4001 WAS CR4001 (INT. VIEW)						
	C4002 WAS CR4002						
	E4001 WAS E4000						
	T4002 WAS J4002						
ISSUE	ITEM	CHANGED FROM	DATE	CN. NO.	DRAFTS	CHECKER	ENG. APP.
TOLERANCES		SCALE:					
ALL OTHERS	DEC. DIM. ±	DRILL PUNCH COMMERCIAL STOCK SIZES AND MANUFACTURERS TOLERANCES ARE NOT INCLUDED.					
	ANGULAR DIM. ±						

AK-100	PROJECT NO.	ASSY. NO.	11-13-59	DATE
REQ PER UNIT	MODEL	PROJECT NO.	ASSY. NO.	DATE
USED ON				

Ref: MS-1913

REQ. ITEM	PART NO.	DESCRIPTION	SYMBOL
		THE TECHNICAL MATERIEL CORP. MAMARONECK, NEW YORK	
		STOCK SIZE	
		MATERIAL	
		WEIGHT PER PC.	
		TYPE & TEMPER	
		HEAT TREAT. SPEC.	
		FINISH & SPEC. NO.	

CHASSIS, MAIN STAMPING

DR. [Signature] ELEC. DES. APP. MECH. DES. APP.

CHECKED [Signature] FINAL APPROVAL [Signature]

LD-640 C

LD-640 C