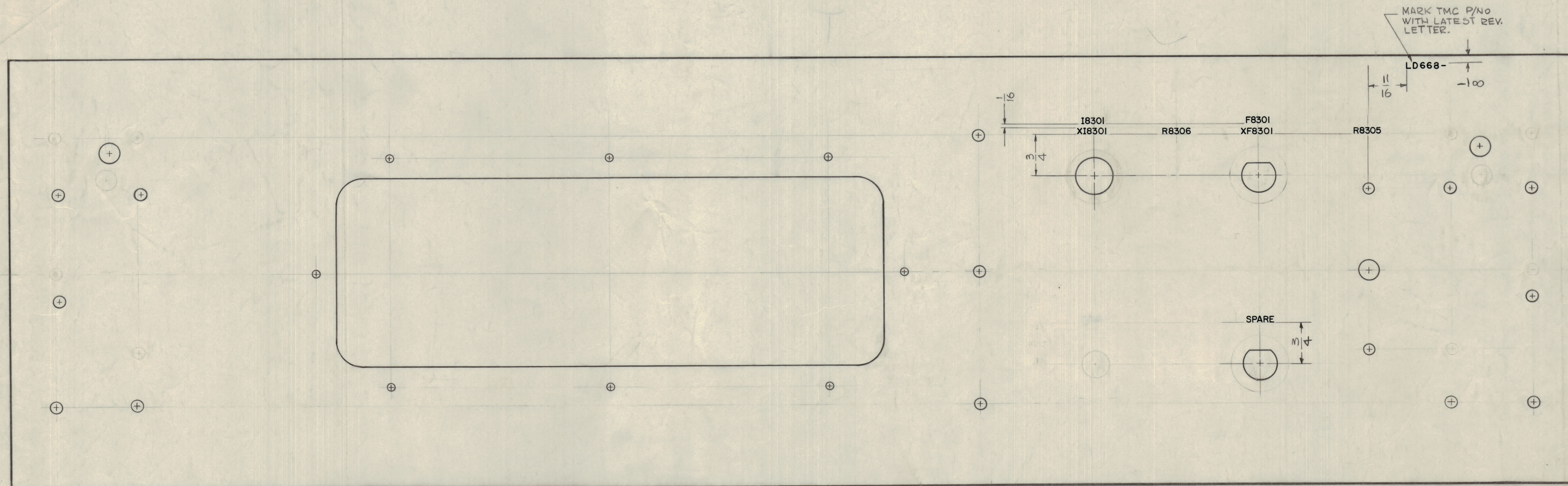


IF IT IS FOUND DESIRABLE TO CHANGE ANY TOLERANCE OR OTHER DETAIL SPECIFIED ON THIS DRAWING NOTIFY THE PURCHASER PROMPTLY.
 MAXIMUM ALLOWABLE TOLERANCES HAVE BEEN DETERMINED AND DEVIATIONS WILL BE CAUSE FOR REJECTION. REMOVE ALL BURRS AND SHARP EDGES

NOTICE TO PERSONS RECEIVING THIS DRAWING
 THE TECHNICAL MATERIEL CORPORATION claims proprietary right in the material disclosed herein. This drawing is issued in confidence for engineering information only and may not be reproduced or used to manufacture anything shown hereon without permission from THE TECHNICAL MATERIEL CORPORATION to the user. This drawing is loaned for mutual assistance and is subject to recall at any time.
 Property of:
 THE TECHNICAL MATERIEL CORPORATION
 MAMARONECK, NEW YORK



REAR VIEW SHOWN

MARKING PROCESS: AS PER THE SPEC S-127
 NOTE - ALL LETTERING 1/8" HIGH BLACK GOTHIC.

ADDED SHEET 2

C	LD 668 WAS LD 669	3-2-67	17878	G.D.	J.C.B.	J.C.B.	
B	SHEET 2 ADDED	6-0-65	14199	J.C.B.	J.C.B.	J.C.B.	
A	SEE SHEET 1	2-15-60		J.C.B.	J.C.B.	J.C.B.	
ISSUE	ITEM	CHANGED FROM	DATE	CN. NO.	DRAFTS	CHECKER	ENG. APP.
TOLERANCES		SCALE:					
ALL	DEC. DIM. ±	DRILL, PUNCH, COMMERCIAL STOCK					
OTHERS	FRAC. DIM. ±	SIZES AND MANUFACTURERS					
	ANGULAR DIM. ±	TOLERANCES ARE NOT INCLUDED.					

REF -
 LD 668 (ENGRAVING, FRONT PANEL)
 REF: M51936 (FRONT)

REQ. ITEM	PART NO.	DESCRIPTION	SYMBOL
		THE TECHNICAL MATERIEL CORP. MAMARONECK, NEW YORK	
		LETTERING, FRONT PANEL, REAR (CROWBAR DRAWER)	
		John C. Biele	
		Checked	
		Final Approval	
		LD-668 C	
		SHEET 2 OF 2	

AX-212	GPT 40K	1-14-60
REQ. PER UNIT	MODEL	PROJECT NO.
		ASSY. NO.
		DATE
		USED ON
		FINISH & SPEC. NO.