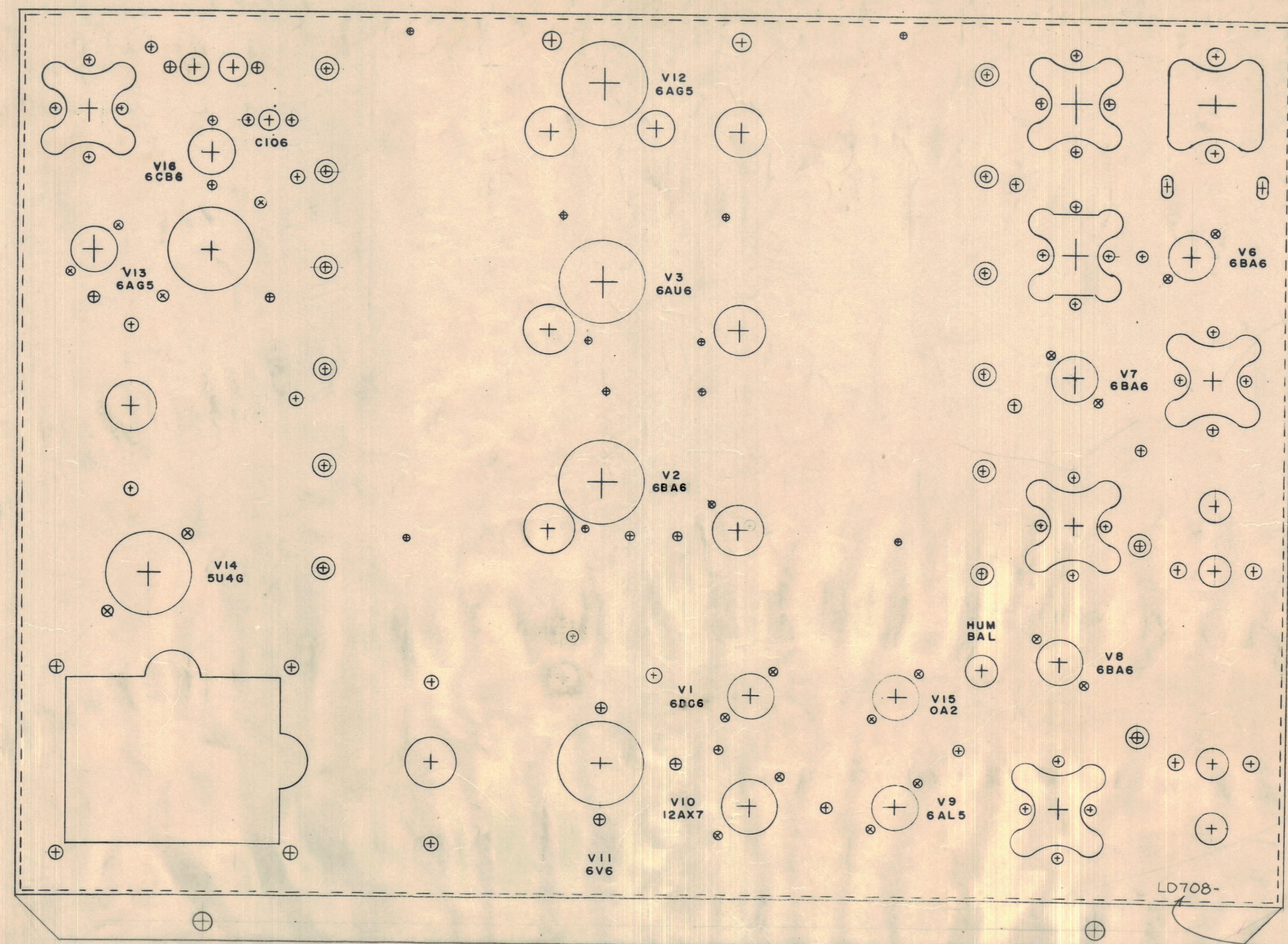


IF IT IS FOUND DESIRABLE TO CHANGE ANY TOLERANCE OR OTHER DETAIL SPECIFIED ON THIS DRAWING NOTIFY THE PURCHASER PROMPTLY.  
 MAXIMUM ALLOWABLE TOLERANCES HAVE BEEN DETERMINED AND DEVIATIONS WILL BE CAUSE FOR REJECTION. REMOVE ALL BURRS AND SHARP EDGES

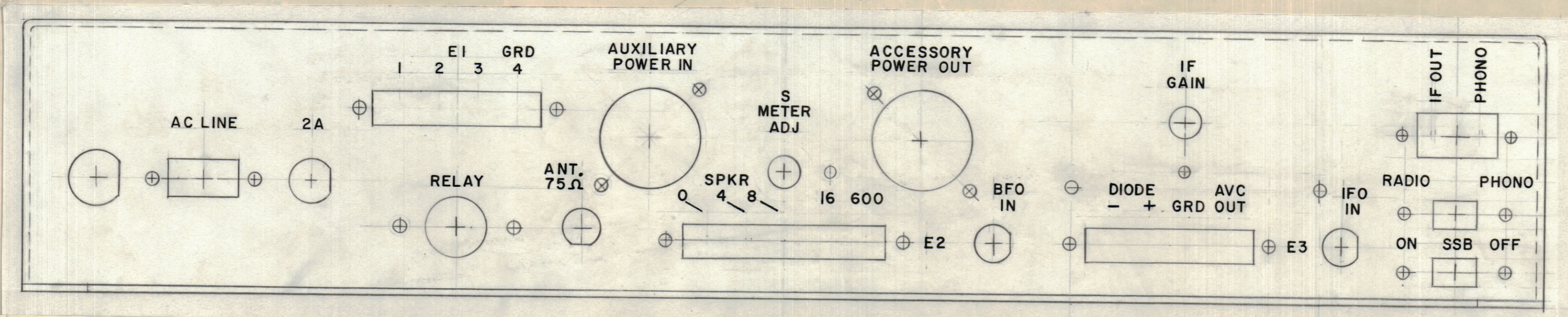
**NOTICE TO PERSONS RECEIVING THIS DRAWING**  
 THE TECHNICAL MATERIEL CORPORATION claims proprietary right in the material disclosed hereon. This drawing is issued in confidence for engineering information only and may not be reproduced or used to manufacture any thing shown hereon without permission from THE TECHNICAL MATERIEL CORPORATION to the user. This drawing is loaned for mutual assistance and is subject to recall at any time.  
 Property of:  
 THE TECHNICAL MATERIEL CORPORATION  
 MAMARONECK, NEW YORK



FRONT  
 TOP OF CHASSIS  
 REAR

LETTERING TO BE 1/8" HIGH GOTHIC, BLACK LOCATED AS SHOWN  
 MARKING PROCESS: AS PER T.M.C. SPECIFICATION S-727

MARK T.M.C. PART NO. 1/8" HIGH GOTHIC WITH LATEST REVISION LETTER.



TOP  
 REAR OF CHASSIS  
 BOTTOM

E	REAR VIEW REVISION REV. 5-12-66 16239	WLD	RU
D	ON E1, GRD RELOCATED; ON E2, E3, #E2 RELOCATED; BFO, IFO RELOCATED	12-4-62 7900	RU
C	E2 RELOCATED	5-14-62 6701	RU
B	SEE SHEET 2	7-20-61 5303	G.D.L.
A	SYMBOLS FOR #E2'S ADDED		
	E1 WAS ANTENNA 75Ω & 50Ω		
	50Ω ADD IF GAIN		
	START ADD S-METER ADJ.		
	DELETE S-METER ADJ.		
	2 6DC6 WAS 6AB4		
	1 6BA6 WAS 6DC6		

REF: MS-2054

REQ. ITEM	PART NO.	DESCRIPTION	SYMBOL
THE TECHNICAL MATERIEL CORP. MAMARONECK, NEW YORK			
STOCK SIZE			
CHASSIS LETTERING MODEL GPR			
TOP AND REAR OUTSIDE			
TYPE & TEMPER.		DRAWN	ELEC. DES. APP.
HEAT TREAT. SPEC.		CHECKED	FINAL APPROVAL
FINISH & SPEC. NO.			

REQ. PER UNIT	MODEL	PROJECT NO.	ASSY. NO.	DATE
	GPR-90RND			3-8-60
USED ON				

LD-708 E