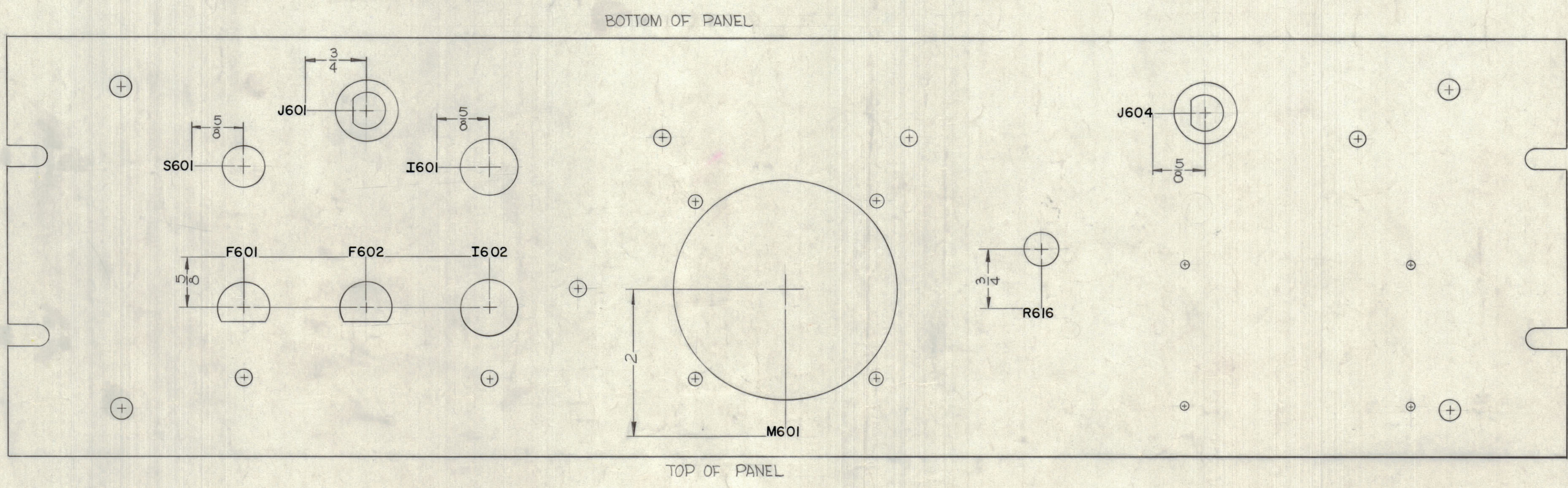


LD-722 E



MARKING PROCESS: AS PER TMC SPECIFICATION S-727
 ALL LETTERING TO BE 1/8 HIGH BLACK GOTHIC.

NOTICE TO PERSONS RECEIVING THIS DRAWING
 THE TECHNICAL MATERIEL CORPORATION claims proprietary right in the material disclosed herein. This drawing is issued in confidence for engineering information only and may not be reproduced or used to manufacture anything shown herein without permission from THE TECHNICAL MATERIEL CORPORATION to the user. This drawing is loaned for mutual assistance and is subject to recall at any time.
 Property of:
 THE TECHNICAL MATERIEL CORPORATION
 MAMARONECK, NEW YORK

REF-MS-2185(8)

E	-	SEE SHEET 1 OF 2 REVISION E	11-21-63	10515				
D	-	SEE SHEET 1 OF 2 REVISION "D"	3-6-62	6429				
C	-	SHEET 2 ADDED						
SYM	ZONE	DESCRIPTION	DATE	CH. NO.	DRAFTS	CHECKER	ENG. APP.	

UNLESS OTHERWISE SPECIFIED:
 DIMENSIONS ARE IN INCHES
 TOLERANCES ON
 FRACTIONS ± 1/64 DECIMALS ± .005 ANGLES ± 1/2°
 SCALE
 MAXIMUM ALLOWABLE TOLERANCES HAVE BEEN DETERMINED AND ANY DEVIATIONS WILL BE CAUSE FOR REJECTION. REMOVE ALL BURRS & SHARP EDGES

1	CSS-1A			3-6-62
1	CSS-1			3-6-62
REQ. PER UNIT	MODEL	SECTION	ASS'Y. NO.	DATE

REQ. ITEM	PART NO.	DESCRIPTION	SYMBOL
		O. POSE	
THE TECHNICAL MATERIEL CORP. MAMARONECK, NEW YORK			
LETTERING, REAR, FRONT PANEL			
MATERIAL			
		JE RUZZO	
TYPE & TEMPER			
HEAT TREAT. SPEC.			
FINISH & BEPC. NO.			