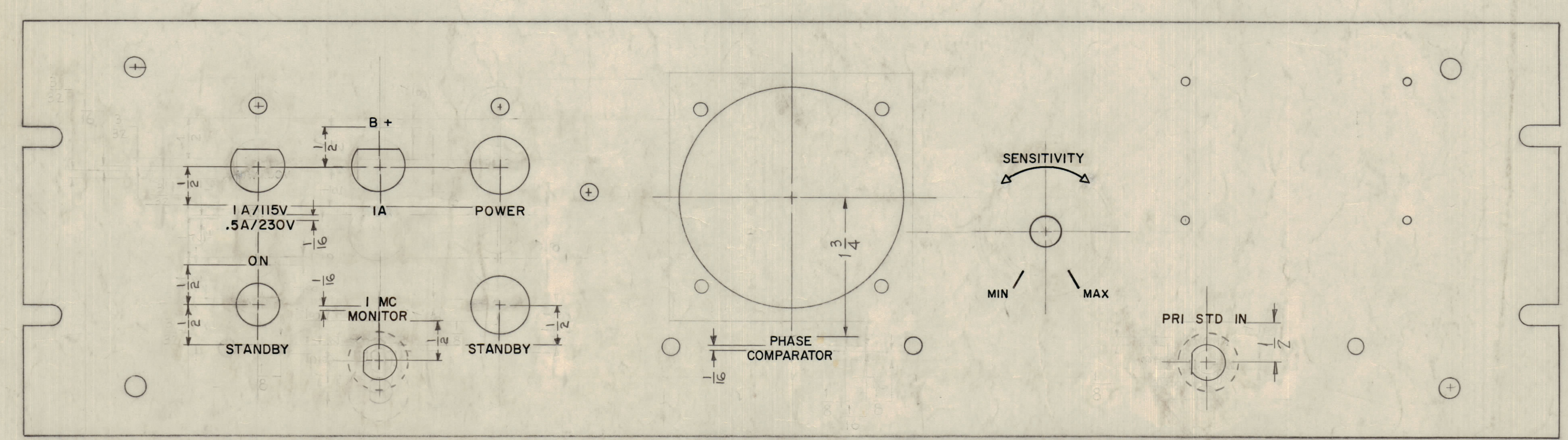
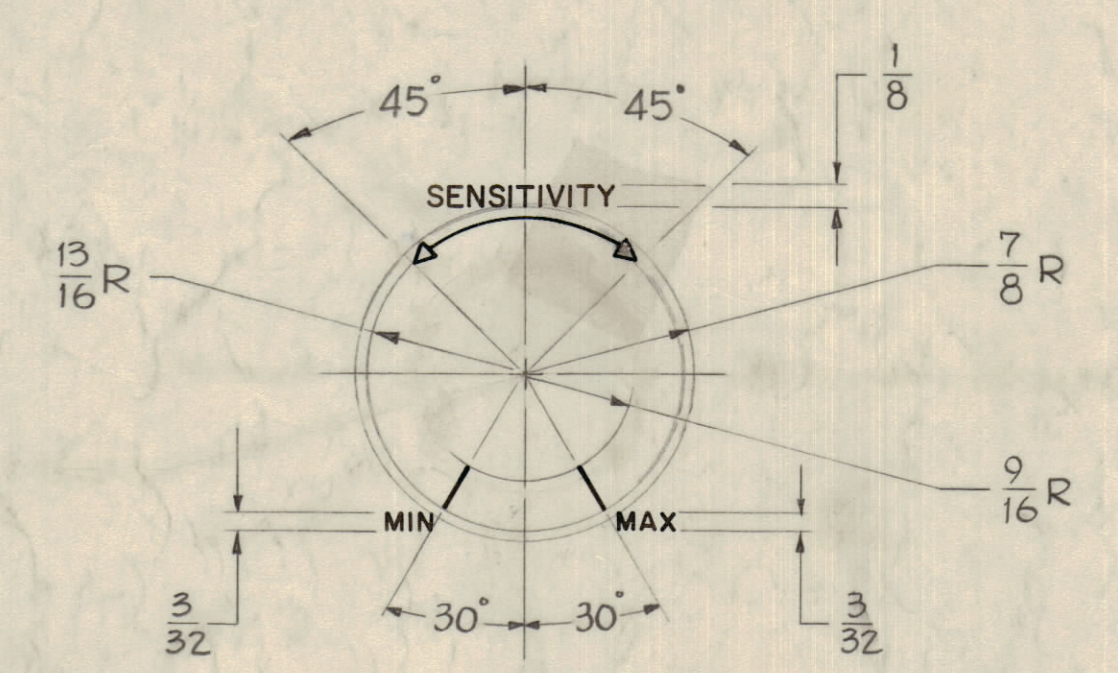
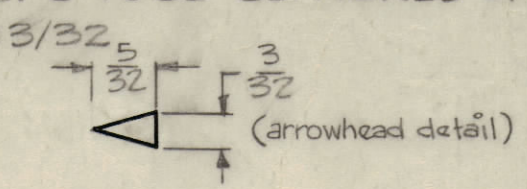


IF IT IS FOUND DESIRABLE TO CHANGE ANY TOLERANCE OR OTHER DETAIL SPECIFIED ON THIS DRAWING NOTIFY THE PURCHASER PROMPTLY.
 MAXIMUM ALLOWABLE TOLERANCES HAVE BEEN DETERMINED AND DEVIATIONS WILL BE CAUSE FOR REJECTION. REMOVE ALL BURRS AND SHARP EDGES



NOTES ~
 1~ ALL LETTERING TO BE 1/8 HIGH GOTHIC, WHITE FILLED, UNLESS SPECIFIED OTHERWISE
 2~ ALL LINES TO BE WHITE FILLED.
 3~ ALL LETTER AND NUMERAL GROUPS TO BE CENTERED ON HOLES.
 4~ ALL ARROWHEADS TO BE 5/32 x 3/32
 DO NOT FILL ARROWHEADS



HEIGHT OF LETTER	DEPTH OF STROKE	WIDTH OF STROKE
1/8	.010	.020
3/32	.010	.015
LINES	.010	.015
ARROW HEADS	.010	---

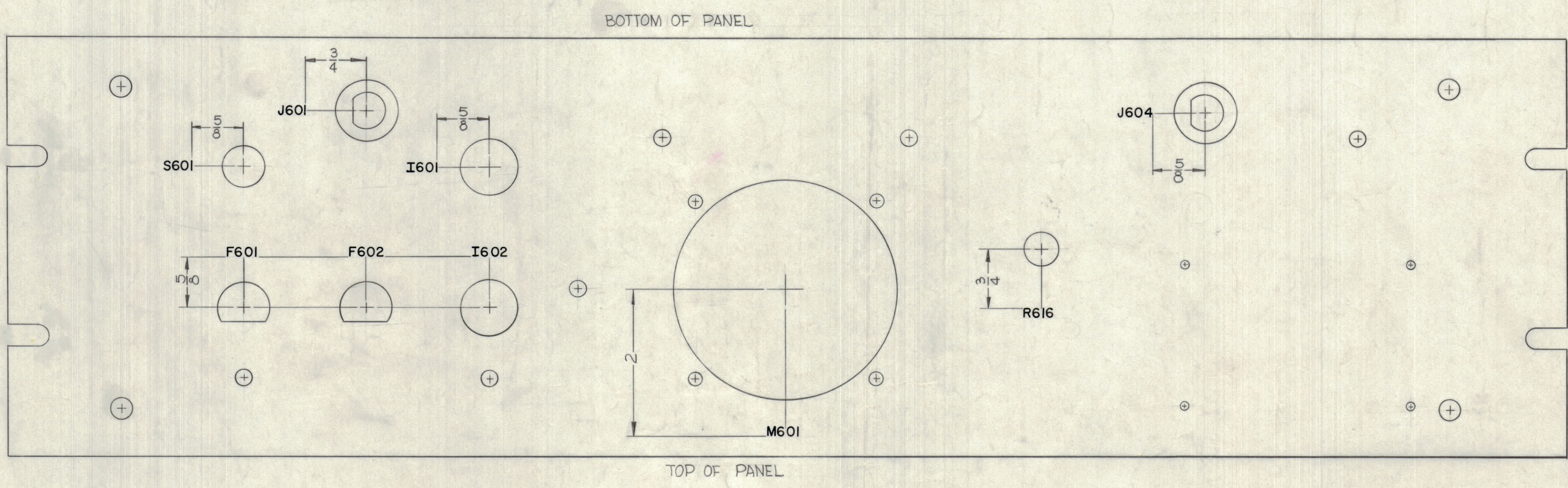
NOTICE TO PERSONS RECEIVING THIS DRAWING
 THE TECHNICAL MATERIEL CORPORATION claims proprietary right in the material disclosed hereon. This drawing is issued in confidence for engineering information only and may not be reproduced or used to manufacture anything shown hereon without permission from THE TECHNICAL MATERIEL CORPORATION to the user. This drawing is loaned for mutual assistance and is subject to recall at any time.
 Property of:
 THE TECHNICAL MATERIEL CORPORATION
 MAMARONECK, NEW YORK

ISSUE ITEM	CHANGED FROM	DATE	CN. NO.	DRAFTER	CHECKER	ENG. APP.
E	1A/115V WAS .5A/115V .5A/230V WAS .25A/230V	1/1/62	10690	GG	GG	GG
D	ENGRAVING - 1A WAS - .5A	1/1/62	10515	GG	GG	GG
C	2 Arrowheads Clarified	3/9/62	6429	GG	GG	GG
B	1 Sheet 2 Added	3/9/62	6429	GG	GG	GG
A	1 REVISOR TO CONFORM WITH FRONT PANEL MARK MS-2185	10-2-61	5653	GG	GG	GG
A	1 STAMPING REVISED	9/16/62		GG	GG	GG

1	CSS-1A			1-30-62
1	CSS-1			4-11-60
REQ PER UNIT	MODEL	PROJECT NO.	ASSY. NO.	DATE

REQ. ITEM		PART NO.	DESCRIPTION		SYMBOL
			THE TECHNICAL MATERIEL CORP. MAMARONECK, NEW YORK		
STOCK SIZE			FRONT PANEL ENGRAVING		
MATERIAL		WEIGHT PER FC.	CSS-1		
TYPE & TEMPER		ICB	DRAWN		ELEC. DES. APP. MECH. DES. APP.
HEAT TREAT. SPEC.			CHECKED		FINAL APPROVAL
FINISH & SPEC. NO.					LD-722 E

LD-722 E



MARKING PROCESS: AS PER TMC SPECIFICATION S-727
 ALL LETTERING TO BE $\frac{1}{8}$ HIGH BLACK GOTHIC.

NOTICE TO PERSONS RECEIVING THIS DRAWING
 THE TECHNICAL MATERIEL CORPORATION claims proprietary right in the material disclosed herein. This drawing is issued in confidence for engineering information only and may not be reproduced or used to manufacture anything shown herein without permission from THE TECHNICAL MATERIEL CORPORATION to the user. This drawing is loaned for mutual assistance and is subject to recall at any time.
 Property of:
 THE TECHNICAL MATERIEL CORPORATION
 MAMARONECK, NEW YORK

REF-MS-2185(8)

E	-	SEE SHEET 1 OF 2 REVISION E	11-21-63	10515				
D	-	SEE SHEET 1 OF 2 REVISION "D"	3-6-62	6429				
C	-	SHEET 2 ADDED						
SYM	ZONE	DESCRIPTION	DATE	CH. NO.	DRAFTS	CHECKER	ENG. APP.	

UNLESS OTHERWISE SPECIFIED:
 DIMENSIONS ARE IN INCHES
 TOLERANCES ON FRACTIONS $\pm 1/64$ DECIMALS $\pm .005$ ANGLES $\pm 1/2^\circ$

SCALE
 MAXIMUM ALLOWABLE TOLERANCES HAVE BEEN DETERMINED AND ANY DEVIATIONS WILL BE CAUSE FOR REJECTION. REMOVE ALL BURRS & SHARP EDGES

1	CSS-1A			3-6-62
1	CSS-1			3-6-62
REQ. PER UNIT	MODEL	SECTION	ASS'Y. NO.	DATE

REQ. ITEM	PART NO.	DESCRIPTION	SYMBOL
		O. POSE	
THE TECHNICAL MATERIEL CORP. MAMARONECK, NEW YORK			
LETTERING, REAR, FRONT PANEL			
MATERIAL			
DRAWN: J.E. RUZZO			
CHECKED: [Signature]			
FINAL APPROVAL: [Signature]			
TYPE & TEMPER		HEAT TREAT. SPEC.	
FINISH & BEPC. NO.		ELEC. DES. APP. MECH. DES. APP.	
		SHEET 2 OF 2	

LD-722 E