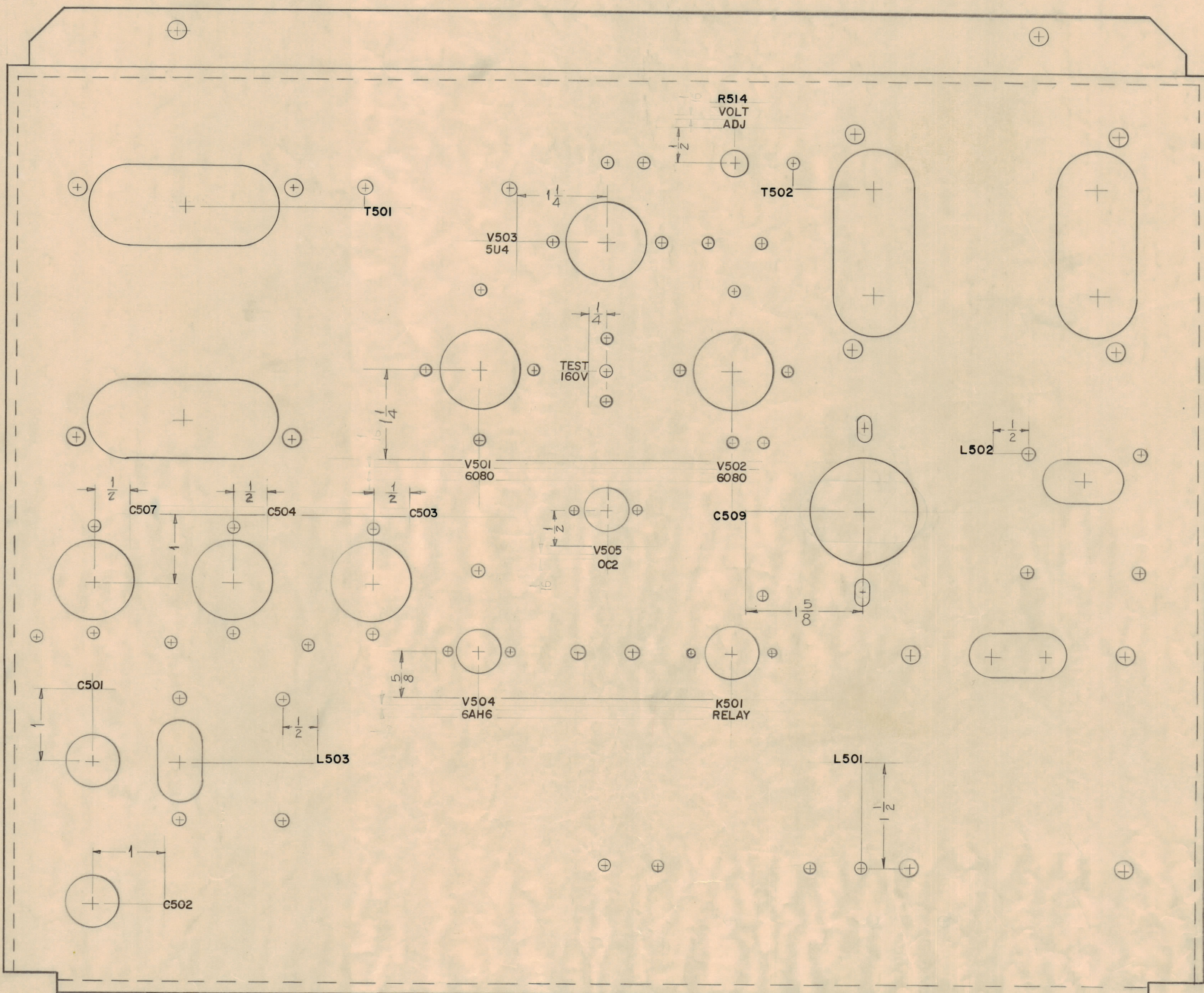
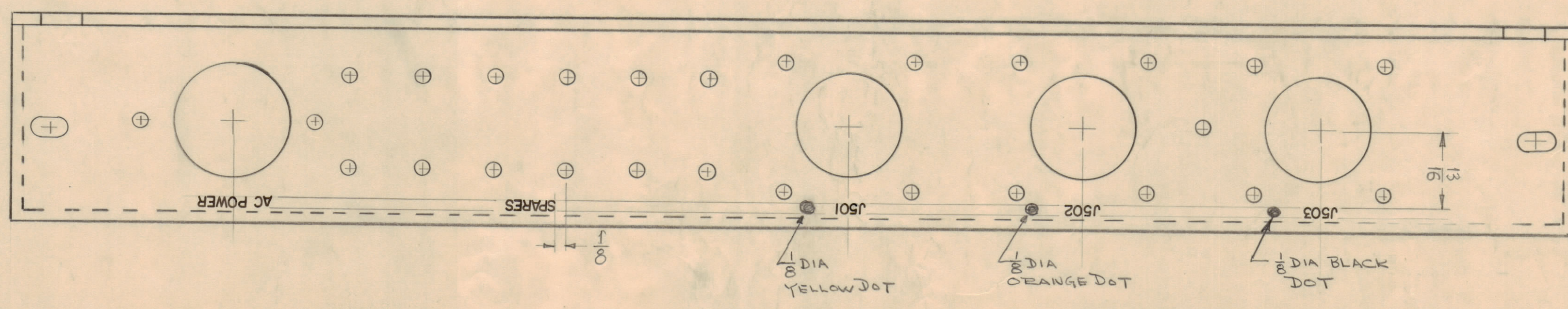


NOTICE TO PERSONS RECEIVING THIS DRAWING

THE TECHNICAL MATERIEL CORPORATION claims proprietary right in the material disclosed herein. This drawing is issued in confidence for engineering information only and may not be reproduced or used to manufacture anything shown herein without permission from THE TECHNICAL MATERIEL CORPORATION to the user. This drawing is loaned for mutual assistance and is subject to recall at any time.

Property of:
THE TECHNICAL MATERIEL CORPORATION
MAMARONECK, NEW YORK



NOTE ~ ALL LETTERING 1/8 HIGH BLACK GOTHIC.
ALL LETTERING GROUPS TO BE CENTERED ON SLOTS OR HOLES.
MARKING PROCESS: AS PER TMC SPECIFICATION S-727

C	L501, L502, L503, C503, T501, T502, R514 ADDED	11-16-64	5902	GDL	[Signature]		
B	See Sheet #2	3-16-61	4423	RH	[Signature]		
A	RIGHT SIDE BOTTOM HOLES CLANGED C507 WAS C503, C503 WAS C507	11-16-60	3488	[Signature]	[Signature]		
ISSUE	ZONE	DESCRIPTION	DATE	CH. NO.	DRAFTS	CHECKER	ENG. APP.
TOLERANCES		SCALE:					
DEC. DIM. ±		MAXIMUM ALLOWABLE TOLERANCES HAVE BEEN DETERMINED AND ANY DEVIATIONS WILL BE CAUSE FOR REJECTION.					
FRAC. DIM. ±		REMOVE ALL BURRS AND SHARP EDGES					
ANGULAR DIM. ±							

FRONT OF UNIT

1	CPP-2			8-9-60
REQ PER UNIT	MODEL	SECTION	ASBY. NO.	DATE
USED ON				

REF # MS-1852 (R)

REQ. ITEM	PART NO.	DESCRIPTION	SYMBOL
THE TECHNICAL MATERIEL CORP. MAMARONECK, NEW YORK			
STAMPING, CHASSIS (EXTERIOR)			
MATERIAL		DRAWN [Signature]	
TYPE & TEMPER		ELEC. DES. APP. [Signature]	
HEAT TREAT. SPEC.		MECH. DES. APP. [Signature]	
FINISH & SPEC. NO.		CHECKED [Signature]	
		FINAL APPROVAL [Signature]	
		SHEET-1 of 2	
		LD-768	