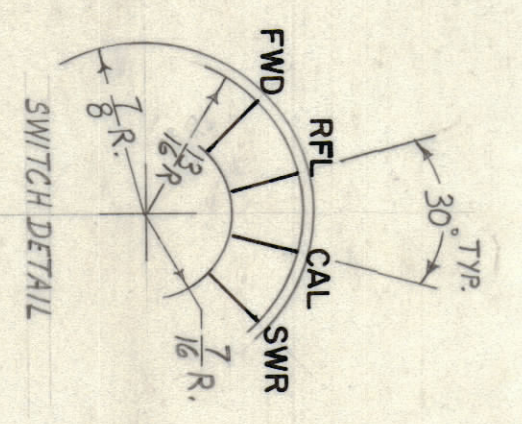
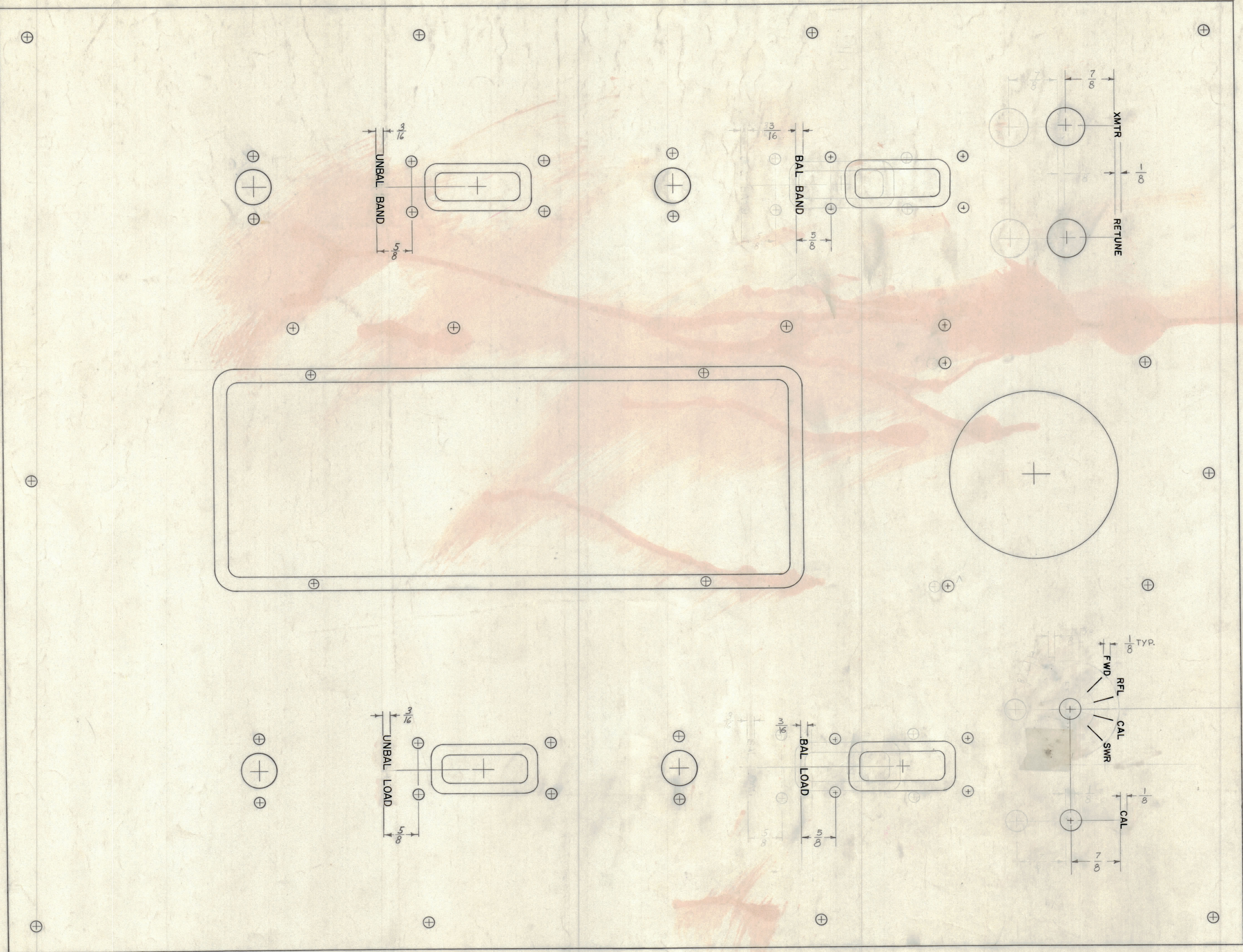


HEIGHT OF LETTER	DEPTH OF STROKE	WIDTH OF STROKE
1/8	.010	.020
3/16	.010	.025
LINES	.010	.015

- 1- ALL LETTERING TO BE WHITE FILLED GOTHIC.
- 2- ALL LINES TO BE WHITE FILLED.
- 3- ALL LETTER GROUPS TO BE CENTERED ON HOLES (OR SLOTS).



NOTICE TO PERSONS RECEIVING THIS DRAWING
 THE TECHNICAL MATERIEL CORPORATION claims proprietary right in the material disclosed herein. This drawing is issued in confidence for engineering information only and may not be reproduced or used to manufacture anything shown hereon without permission from THE TECHNICAL MATERIEL CORPORATION to the user. This drawing is loaned for mutual assistance and is subject to recall at any time.
 Property of:
 THE TECHNICAL MATERIEL CORPORATION
 MAMARONECK, NEW YORK

ISSUE NO.	DESCRIPTION	DATE	CH. NO.	DRAFTS	CHECKER	ENG. APP.
B	see sheet (2)	7-21-61	5292	BOL	RSW	DD
A	See Sheet (1)	4-24-61	-	RS	RSW	DD

TOLERANCES
 DEC. DIM. ± 1/16
 FRAC. DIM. ± 1/32
 ANGULAR DIM. ± 1/4

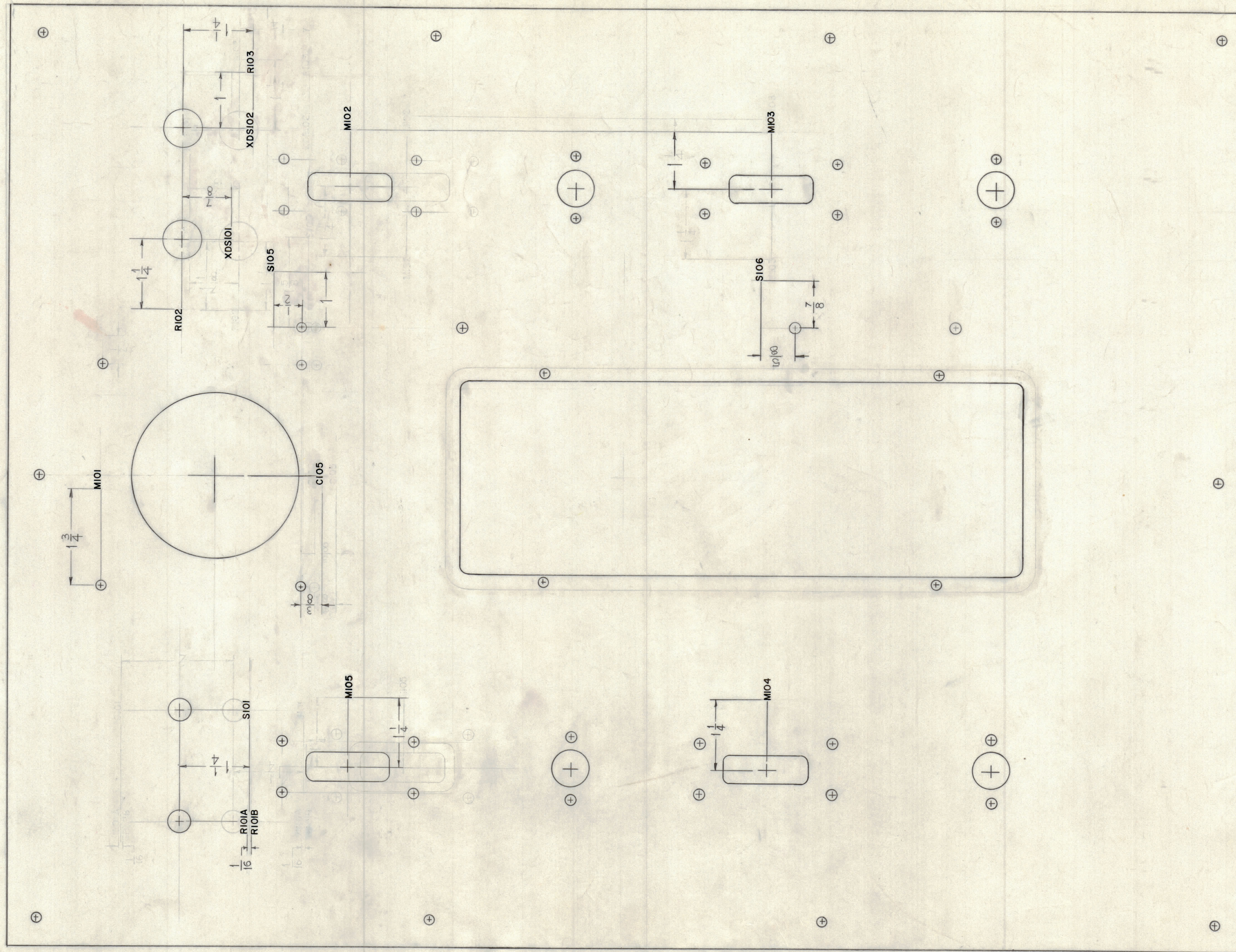
SCALE:
 MAXIMUM ALLOWABLE TOLERANCES HAVE BEEN DETERMINED AND ANY DEVIATIONS WILL BE CAUSE FOR REJECTION.
 REMOVE ALL BURRS AND SHARP EDGES

REQ. PER UNIT	MODEL	SECTION	ASSY. NO.	DATE
1	ACU			9-22-60

REF: MS-2421 (8)

REQ. ITEM	PART NO.	DESCRIPTION	SYMBOL
THE TECHNICAL MATERIEL CORP. MAMARONECK, NEW YORK			
FRONT PANEL, ENGRAVING			
DRAWN		ELEC. DES. APP.	MECH. DES. APP.
CHECKED		FINAL APPROVAL	
		LD-778	
		B	

FINISH & SPEC. NO.



REAR VIEW SHOWN

LETTERING TO BE 1/8 HIGH BLACK GOTHIC (SILK SCREEN OR EQUIVALENT)

NOTICE TO PERSONS RECEIVING THIS DRAWING

THE TECHNICAL MATERIEL CORPORATION claims proprietary right in the material disclosed hereon. This drawing is issued in confidence for engineering information only and may not be reproduced or used to manufacture anything shown hereon without permission from THE TECHNICAL MATERIEL CORPORATION to the user. This drawing is loaned for mutual assistance and is subject to recall at any time.

Property of:
THE TECHNICAL MATERIEL CORPORATION
MAMARONECK, NEW YORK

Ref. M5-2421 (8)

REG. ITEM	PART NO.	DESCRIPTION	SYMBOL
		THE TECHNICAL MATERIEL CORP. MAMARONECK, NEW YORK	
		LETTERING FRONT PANEL REAR	
		MATERIAL	
		RUZZO	
		DRAWN	CHECKED
		DATE	FINAL APPROVAL
		4-17-61	a.a. LD-778
		TYPE & TEMPER	HEAT TREAT. SPEC.
		FINISH & SPEC. NO.	ELEC. DES. APP. MECH. DES. APP. SHEET 2 OF 2

REQ. PER UNIT	MODEL	SECTION	ASS'Y. NO.	DATE
1	ACU			4-17-61

SYM	ZONE	DESCRIPTION	DATE	CH. NO.	DRAFTS	CHECKER	ENG. APP.
B	1	LETTERING R101A, R101B, S101, MIO3, MIO4, S105, XDS101, XDS102, R102, R103 & MIO2 RE-CREATED	7-21-61	5292	S.D.L.	R.L.H.	R.B.
A	F85	S105, S106 ADDED	4-24-61	-	R.U.	R.L.H.	R.B.

UNLESS OTHERWISE SPECIFIED:
DIMENSIONS ARE IN INCHES
TOLERANCES ON
FRACTIONS ± 1/64 DECIMALS ± .005 ANGLES ± 1/2°

SCALE
MAXIMUM ALLOWABLE TOLERANCES HAVE BEEN DETERMINED AND ANY DEVIATIONS WILL BE CAUSE FOR REJECTION. REMOVE ALL BURRS & SHARP EDGES

LD-778 B

A

1