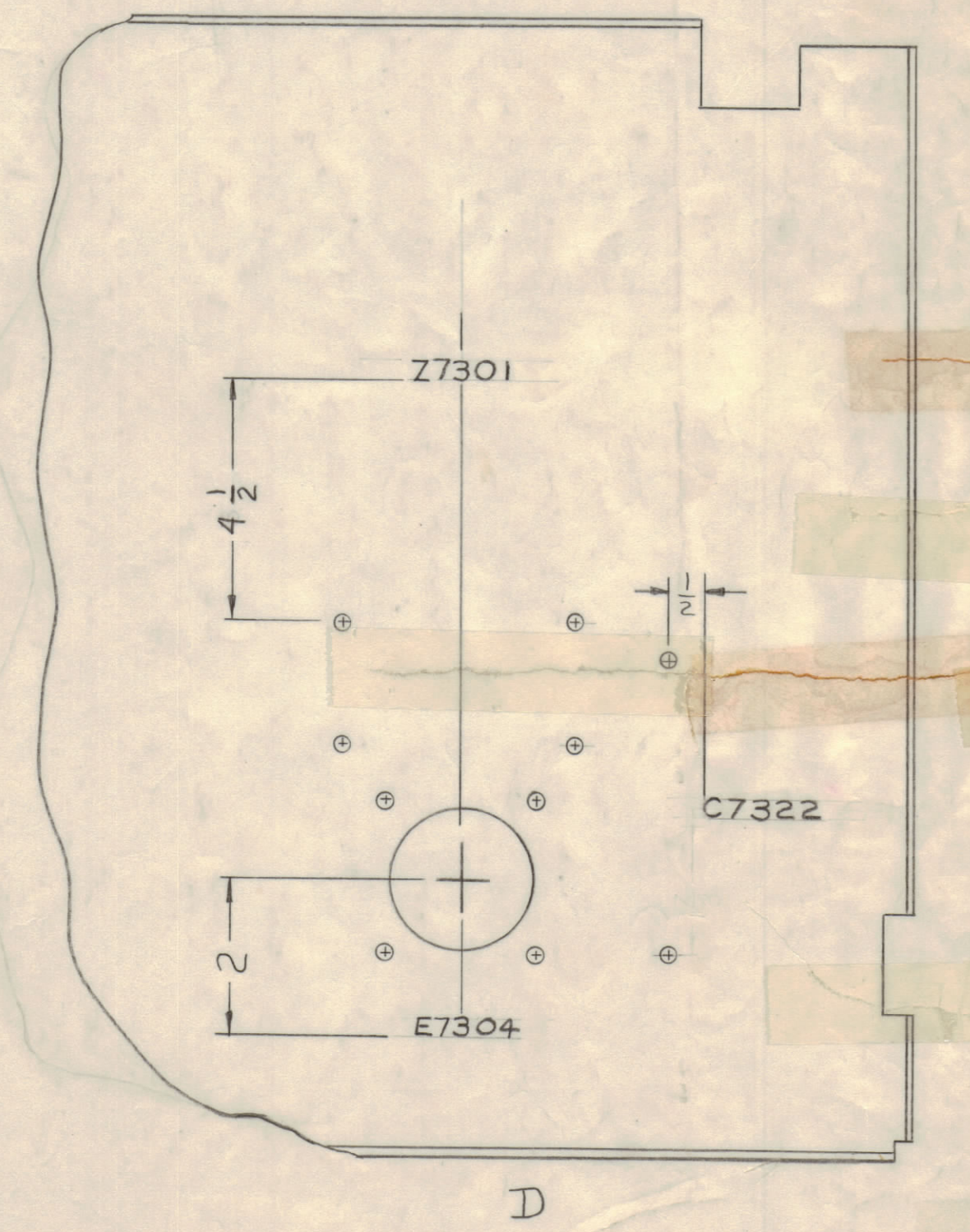
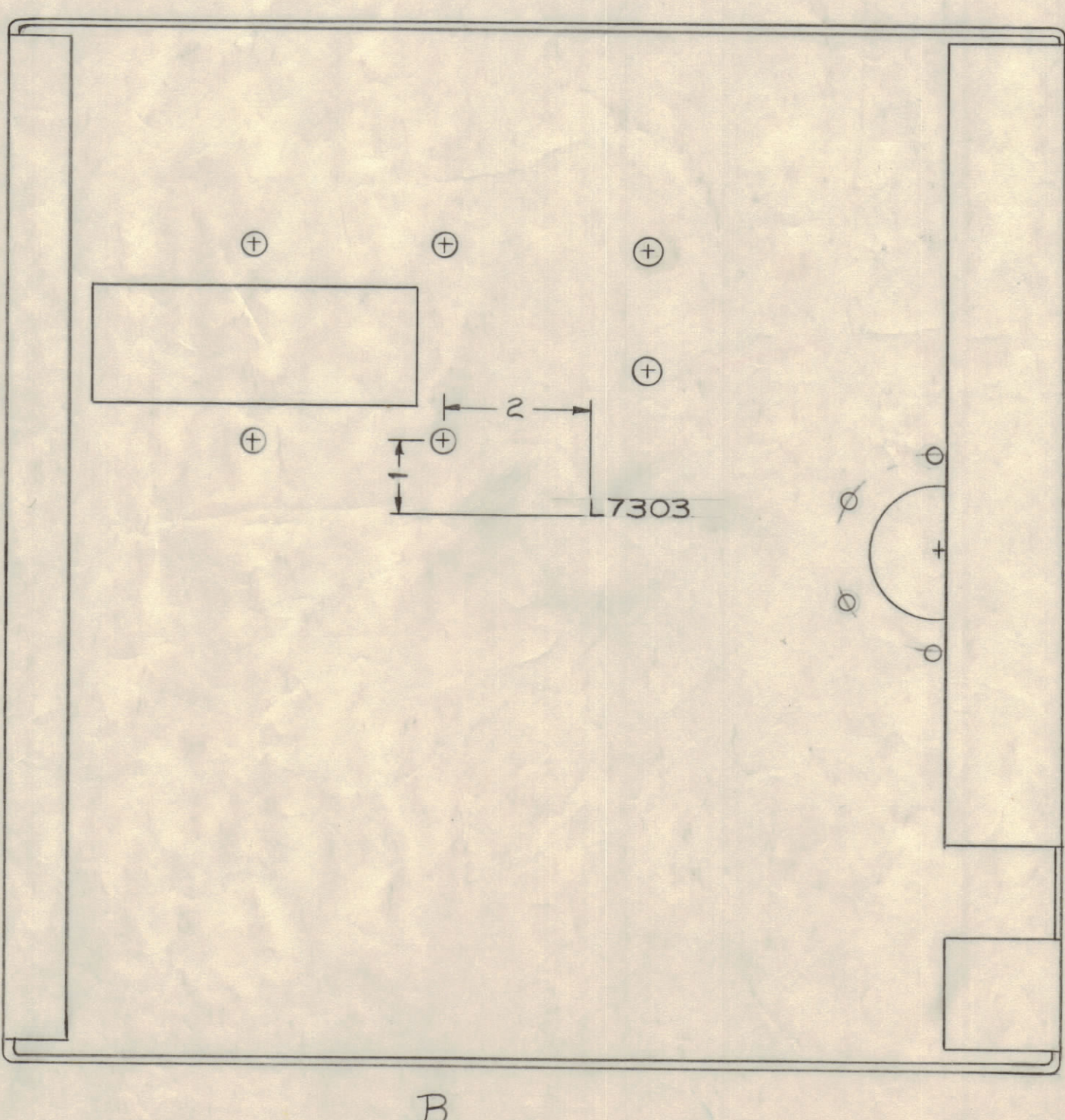
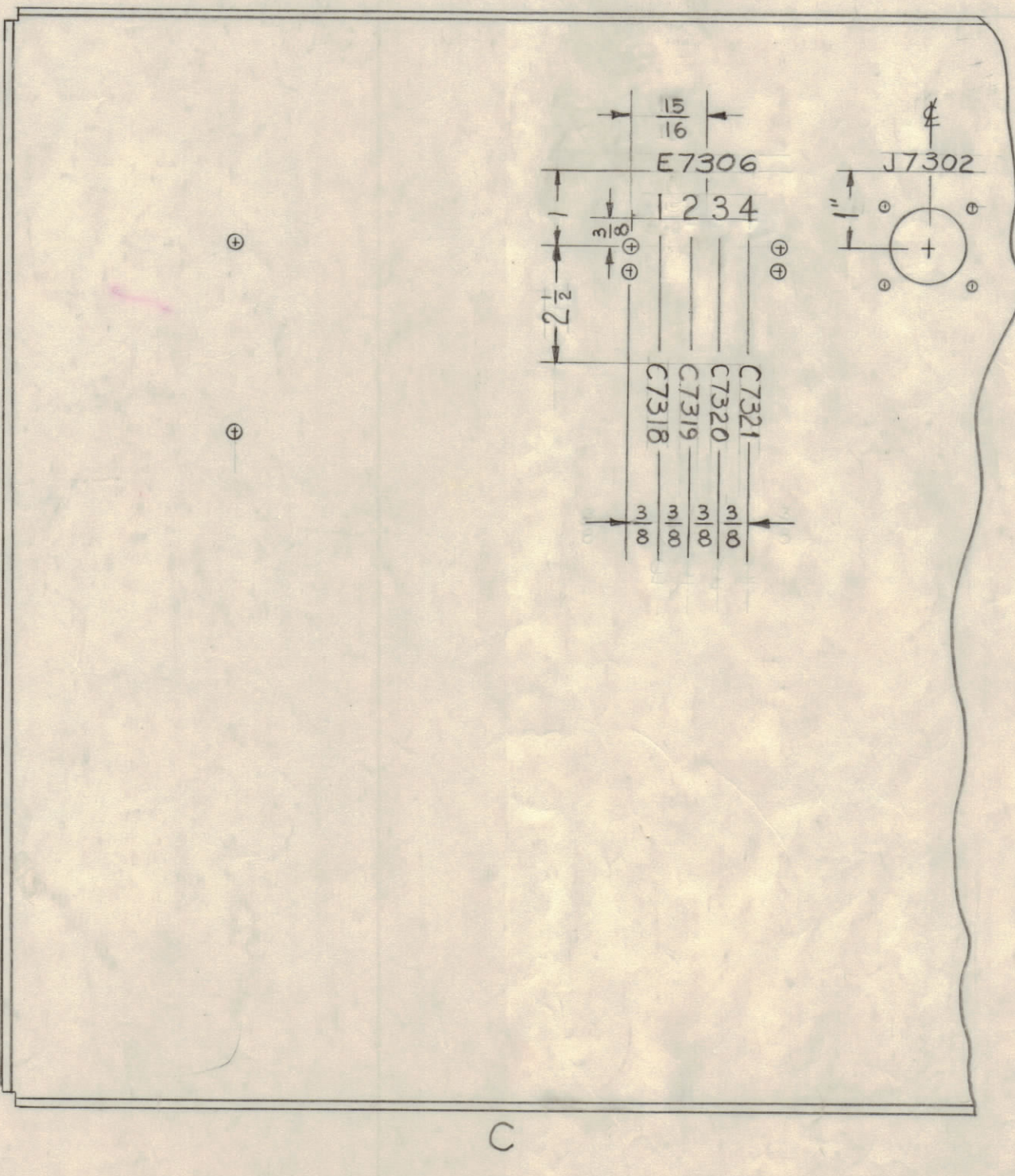
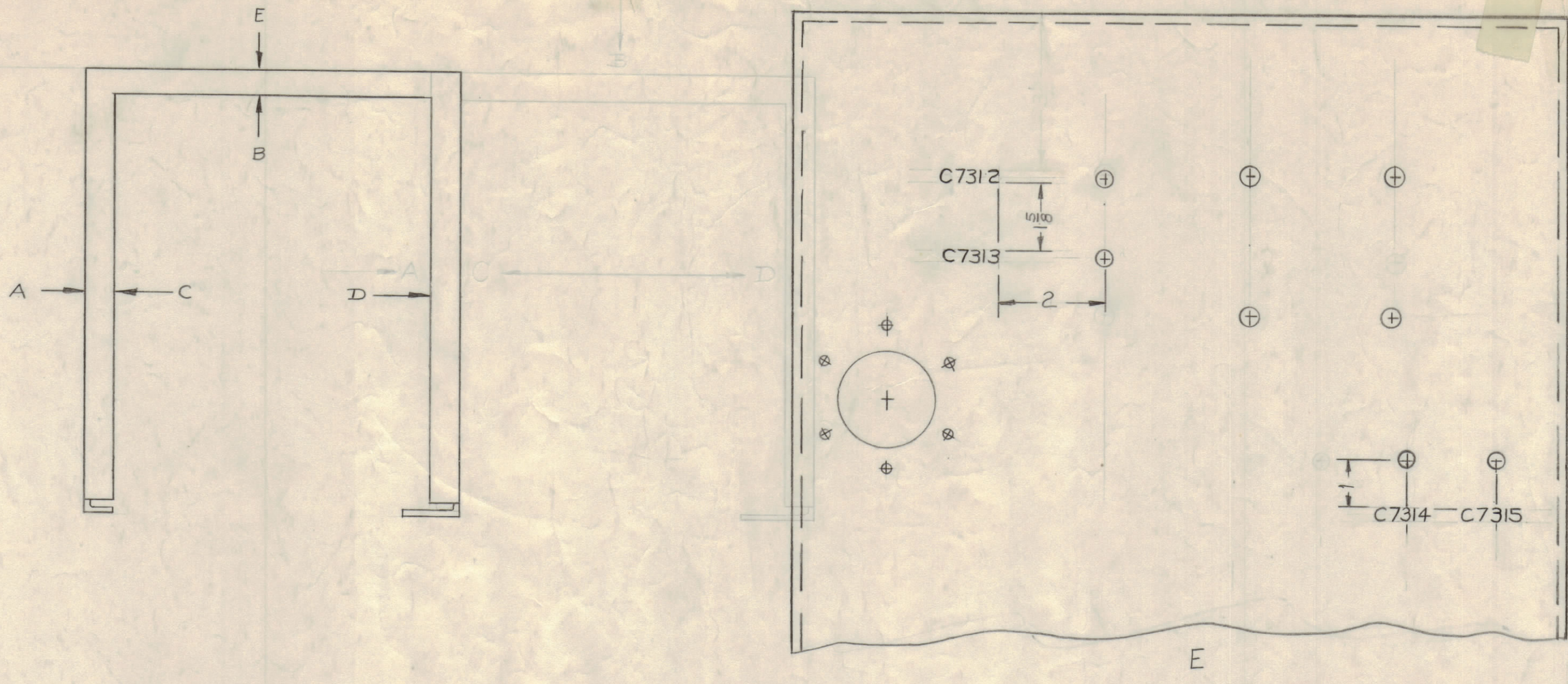


NOTICE TO PERSONS RECEIVING THIS DRAWING
 THE TECHNICAL MATERIEL CORPORATION claims proprietary right in the material disclosed herein. This drawing is issued in confidence for engineering information only and may not be reproduced or used to manufacture anything shown hereon without permission from THE TECHNICAL MATERIEL CORPORATION to the user. This drawing is loaned for mutual assistance and is subject to recall at any time.
 Property of:
 THE TECHNICAL MATERIEL CORPORATION
 MAMARONECK, NEW YORK



MARKING PROCESS: AS PER TMC SPECIFICATION S-727

NOTE ~ ALL LETTERING 1/8" HIGH BLACK GOTHIC.

ISSUE	ZONE	DESCRIPTION	DATE	CH. NO.	DRAFTS	CHECKER	ENG. APP.
C	D2	DIM. 4 1/2 WAS 3 (ON Z7301, AX511 WAS AX275)	3-11-65	13482	JP	QC	JP
B	D7	REFER TO EMN 10940	2-24-64	10940	JP	JP	JP
A	D6	ON J7302 DIM 1" WAS 5/2" (VIEW C)	11/27/60	3559	JP	JP	JP

TOLERANCES: SCALE: (DO NOT SCALE)
 DEC. DIM. ± 1/64
 FRAC. DIM. ± 1/64
 ANGULAR DIM. ± 1/2°

MAXIMUM ALLOWABLE TOLERANCES HAVE BEEN DETERMINED AND ANY DEVIATIONS WILL BE CAUSE FOR REJECTION. REMOVE ALL BURRS AND SHARP EDGES

REQ. PER UNIT	MODEL	SECTION	ASBY. NO.	DATE
	GPT-40K	AX511		9-28-60

REF-MS-2038

REQ. ITEM	PART NO.	DESCRIPTION	SYMBOL
		THE TECHNICAL MATERIEL CORP. MAMARONECK, NEW YORK	
		MARKING, TUBE SHIELD	
		MATERIAL	
		TYPE & TEMPER	
		HEAT TREAT. SPEC.	
		FINISH & SPEC. NO.	

APPROVALS:
 DRAWN: R. V. ZZO
 ELEC. DES. APP.: [Signature]
 MECH. DES. APP.: [Signature]
 CHECKED: [Signature]
 FINAL APPROVAL: [Signature]

LD-813 C