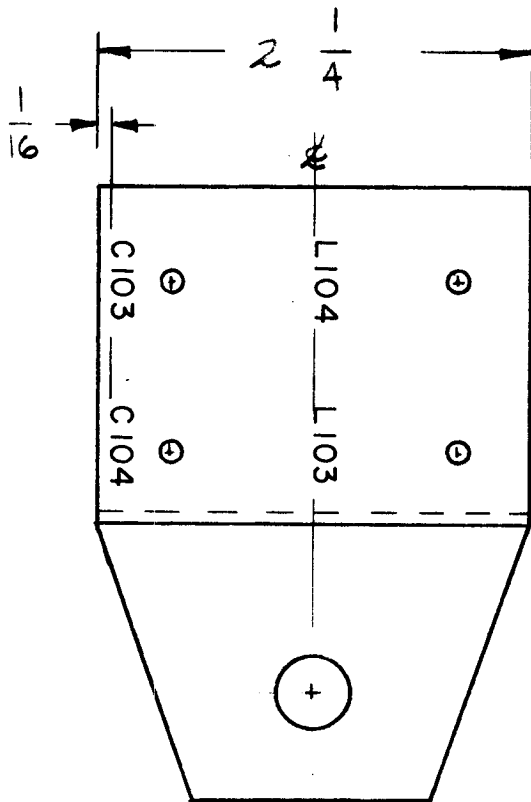


REQ. PER UNIT	USED ON			LD-901
	MODEL	ASS'Y. NO.	DATE	
1	ACU		4-13-61	



NOTE:

ALL LETTERING TO BE  
1/8 HIGH BLACK GOTHIC.

MARKING PROCESS: AS PER TMC SPECIFICATION S-727

REF (1) MS-2441

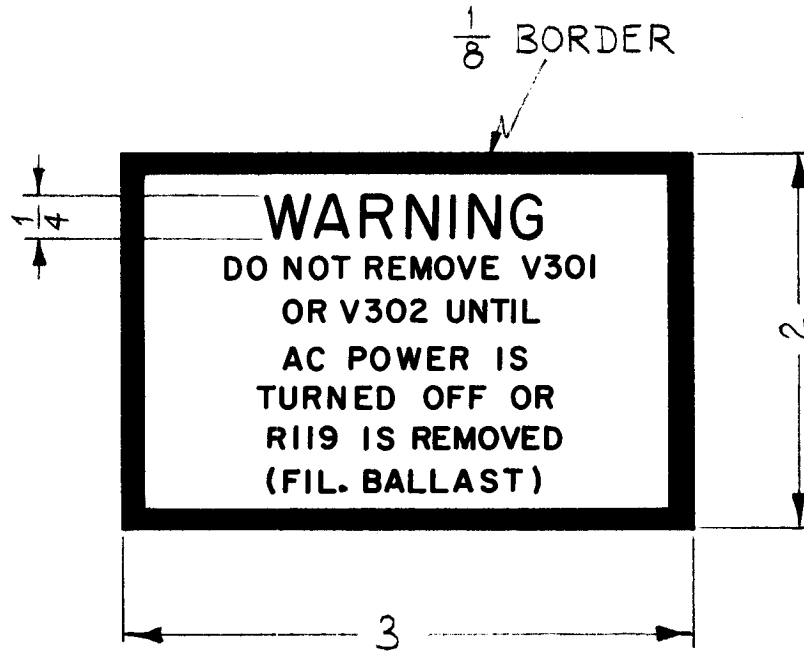
REQ.	ITEM	PART NO.	DESCRIPTION				SYMBOL
			THE TECHNICAL MATERIEL CORP. MAMARONECK, NEW YORK				
			LETTERING, BRACKET FILTER MOUNTING				
			MATERIAL				
			TYPE & TEMPER HEAT TREAT. SPEC.				
			FINISH & SPEC. NO.				
ISSUE	ITEM	CHANGED FROM	DATE	CH. NO.	DRAFTS	CHECKER	ENG. APP.
TOLERANCES			SCALE:				
DEC. DIM. ±			MAXIMUM ALLOWABLE TOLERANCES HAVE BEEN DETERMINED AND ANY DEVIATIONS WILL BE CAUSE FOR REJECTION. REMOVE ALL BURRS AND SHARP EDGES				
FRAC. DIM. ±							
ANGULAR DIM. ±							
			DRAWN		CHECKED		FINAL APPROVAL
					ELEC. DES. APP.		MECH. DES. APP.
					LD-901		





REQ. PER. UNIT	USED ON		
	MODEL	ASS'Y. NO.	DATE
1	VOX-5		4-20-61
1	VOX-6		4-20-61

LD-908

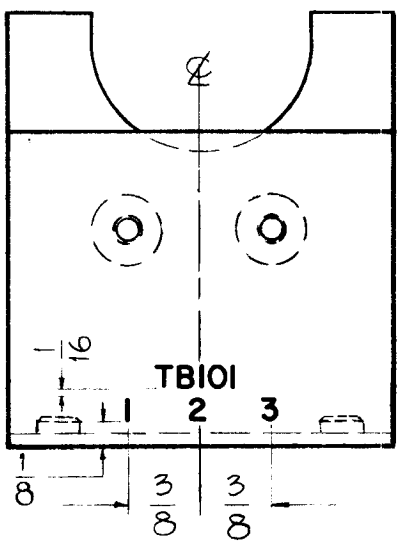


ALL LETTERING TO BE 1/8 HIGH

GOthic UNLESS OTHERWISE SPECIFIED.

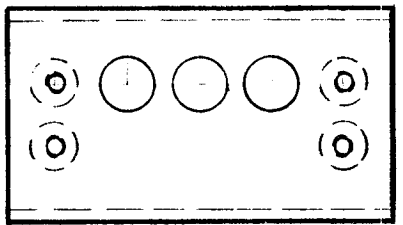
							REQ.	ITEM	PART NO.	DESCRIPTION			SYMBOL
										THE TECHNICAL MATERIEL CORP.			
							STOCK SIZE			MAMARONECK, NEW YORK			
							RUBBER STAMP			STAMP, WARNING, V301 & V302			
							MATERIAL						
ISSUE	ITEM	CHANGED FROM	DATE	CH. NO.	DRAFTS	CHECKER	ENG. APP.			<i>M.G.F.</i>	<i>J.W.</i>	<i>K.S.</i>	
TOLERANCES			SCALE:				TYPE & TEMPER		HEATTREAT. SPEC.	DRAWN	CHECKED	FINAL APPROVAL	
DEC. DIM. ±			MAXIMUM ALLOWABLE TOLERANCES HAVE BEEN DETERMINED AND ANY DEVIATIONS WILL BE CAUSE FOR REJECTION.									LD-908	
FRAC. DIM. ± 1/64			REMOVE ALL BURRS AND SHARP EDGES										
ANGULAR DIM. ±							FINISH & SPEC. NO.		ELEC. DES. APP		MECH. DES. APP		

REQ. PER. UNIT	USED ON			LD-910
	MODEL	ASS'Y. NO.	DATE	
1	ACU		4-20-61	



NOTE - ALL LETTERING  $\frac{1}{8}$  HIGH, BLACK  
GOTHIC.

MARKING PROCESS: AS PER TMC SPECIFICATION S-727

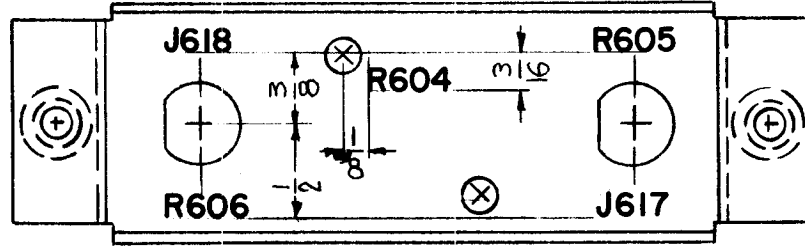
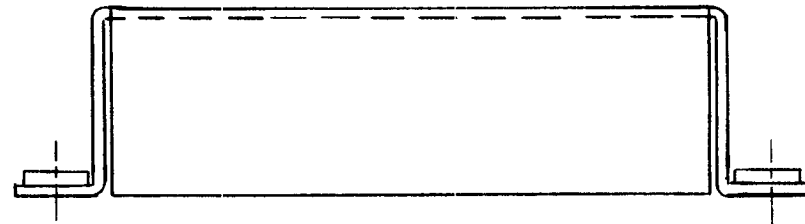
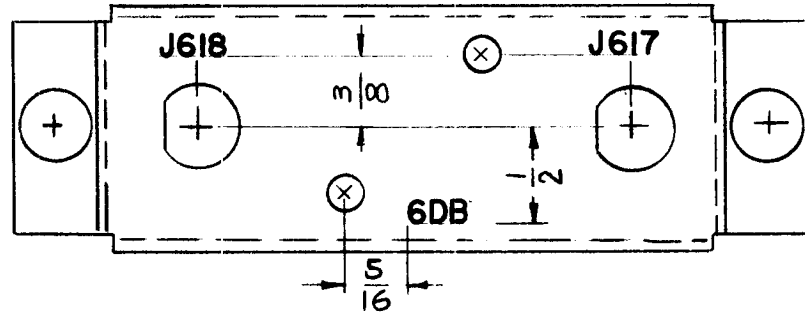


REF - TMC DWG NO. MS - 2550

ISSUE	ITEM	CHANGED FROM	DATE	CH. NO.	DRAFTS	CHECKER	ENG. APP.	REQ.	ITEM	PART NO.	DESCRIPTION	SYMBOL
											THE TECHNICAL MATERIEL CORP.	
											MAMARONECK, NEW YORK	
											LETTERING	
											THERMOSTAT BRACKET	
											J.C. Biele	
											<i>[Signature]</i>	<i>[Signature]</i>
											DRAWN	CHECKED
											aa	LD-910
											ELEC. DES. APP	MECH. DES. APP

REQ. PER. UNIT	USED ON		
	MODEL	ASS'Y. NO.	DATE
1	RAK-9C		
1	RAK-9D		4-28-61


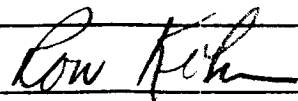
LD-911



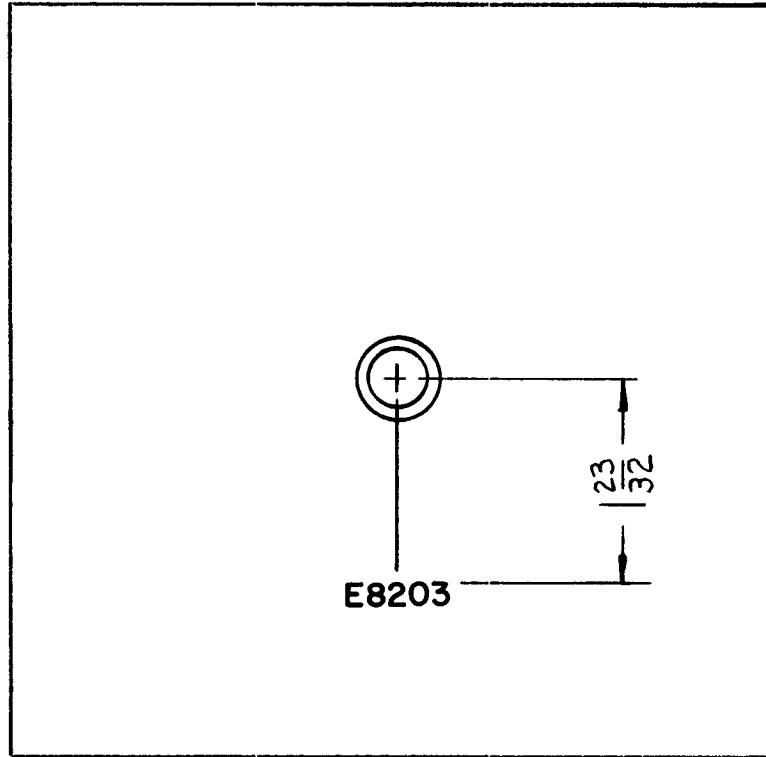
ALL LETTERING TO BE 1/8 HIGH BLACK GOTHIC.

MARKING PROCESS: AS PER TMC SPECIFICATION S-727

REF-MS-1927 (1)

							REQ.	ITEM	PART NO.	DESCRIPTION			SYMBOL	
										THE TECHNICAL MATERIEL CORP.				
										MAMARONECK, NEW YORK				
										LETTERING, ATTENUATOR CHASSIS				
ISSUE	ITEM	CHANGED FROM	DATE	CH. NO.	DRAFTS	CHECKER	ENG. APP.	MATERIAL		RON. UZZO		 		
TOLERANCES			SCALE: Do Not Scale						DRAWN		CHECKED		FINAL APPROVAL	
DEC. DIM. ±			MAXIMUM ALLOWABLE TOLERANCES HAVE BEEN DETERMINED AND ANY DEVIATIONS WILL BE CAUSE FOR REJECTION. REMOVE ALL BURRS AND SHARP EDGES				TYPE & TEMPER		HEATTREAT. SPEC.		RK		LD-911	
FRAC. DIM. ±							FINISH & SPEC. NO.		ELEC. DES. APP		MECH. DES. APP			
ANGULAR DIM. ±														

REQ. PER UNIT	USED ON			LD-912
	MODEL	ASS'Y. NO.	DATE	
1	GPT-40K	AT-101	4-27-61	



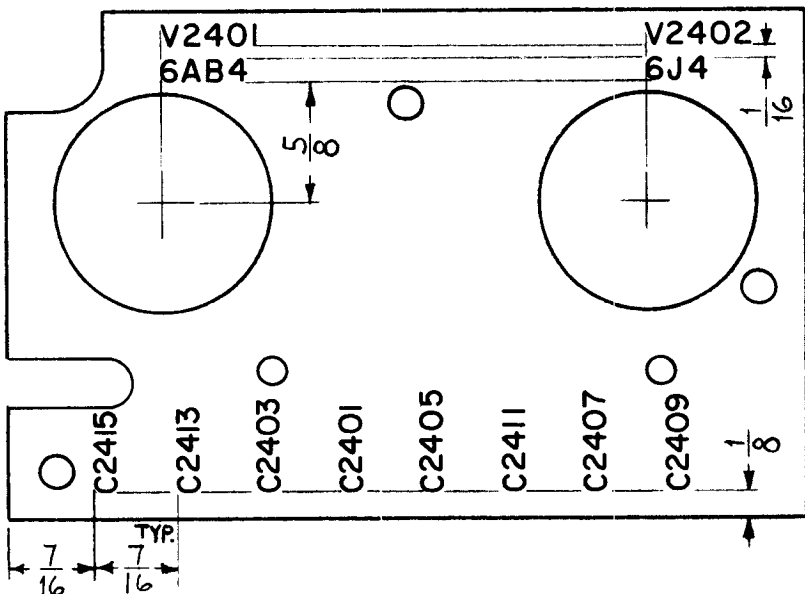
LETTERING TO BE 1/8  
HIGH BLACK GOTHIC.

MARKING PROCESS: AS PER TMC SPECIFICATION S-727

REF- PX-525

							REQ.	ITEM	PART NO.	DESCRIPTION	SYMBOL			
										THE TECHNICAL MATERIEL CORP.				
										MAMARONECK, NEW YORK				
							STOCK SIZE			LETTERING PLATE, CONTACT				
							MATERIAL			BUTTON				
ISSUE	ITEM	CHANGED FROM	DATE	CH. NO.	DRAFTS	CHECKER	ENG. APP.			20 HLG 203				
TOLERANCES			SCALE: Do Not Scale.						DRAWN	CHECKED	FINAL APPROVAL			
DEC. DIM. ±			MAXIMUM ALLOWABLE TOLERANCES HAVE BEEN DETERMINED AND ANY DEVIATIONS WILL BE CAUSE FOR REJECTION. REMOVE ALL BURRS AND SHARP EDGES				TYPE & TEMPER		HEATTREAT. SPEC.	20		LD-912		
FRAC. DIM. ±							FINISH & SPEC. NO.		ELEC. DES. APP		MECH. DES. APP			
ANGULAR DIM. ±														

REQ. PER. UNIT	USED ON			LD-919
	MODEL	ASS'Y. N.	DATE	
1	CHG-2	OVEN	5-19-61	




ALL LETTERING TO BE 1/8 HIGH BLACK GOTHIC.  
 MARKING PROCESS: AS PER TMC SPECIFICATION S-727

REF: (1) MS-2576

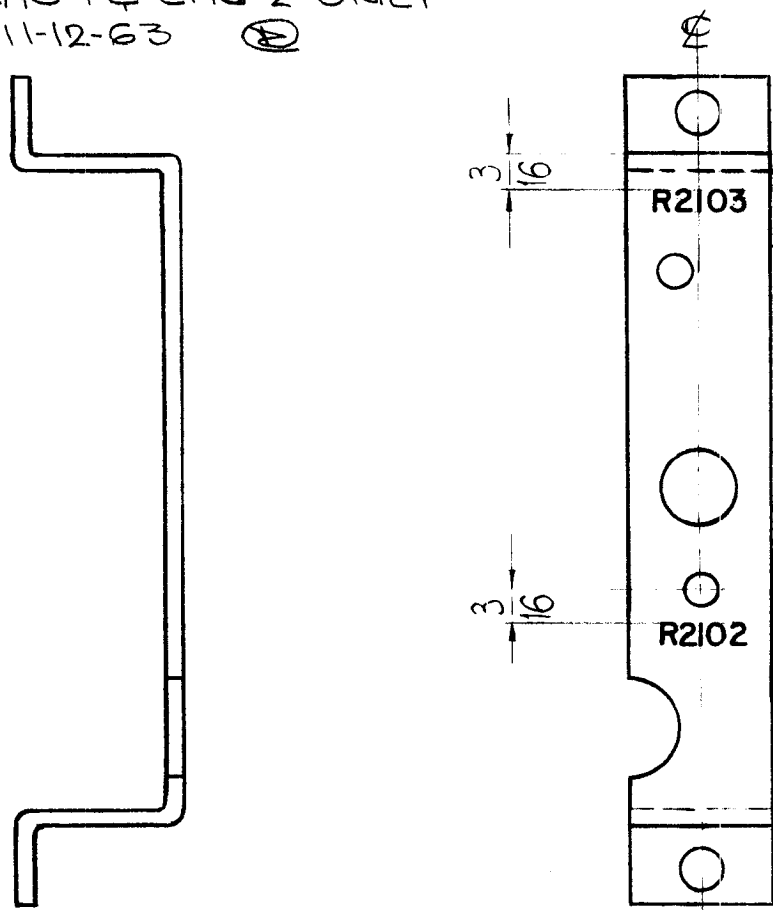
								REQ.	ITEM	PART NO.	DESCRIPTION		SYMBOL				
											THE TECHNICAL MATERIEL CORP.						
											MAMARONECK, NEW YORK						
											LETTERING, OVEN SHELL, REAR COVER						
ISSUE	ITEM	CHANGED FROM	DATE	CH. NO.	DRAFTS	CHECKER	ENG. APP.	MATERIAL		DRAWN		CHECKED	FINAL APPROVAL				
TOLERANCES			SCALE: FULL (DO NOT SCALE)							M.D.F.		O					
DEC. DIM. ±			MAXIMUM ALLOWABLE TOLERANCES HAVE BEEN DETERMINED AND ANY DEVIATIONS WILL BE CAUSE FOR REJECTION. REMOVE ALL BURRS AND SHARP EDGES					TYPE & TEMPER		HEAT TREAT. SPEC.		S.D.		LD-919			
FRAC. DIM. ±								FINISH & SPEC. NO.		ELEC. DES. APP		MECH. DES. APP					
ANGULAR DIM. ±																	





**OBSOLETE** USE FOR SPARE PARTS ON CHG-1 & CHG-2 ONLY  
EMN 10380 11-12-63 


REQ. PER. UNIT	USED ON			LD-922	A
	MODEL	ASS'Y. NO.	DATE		
1	CHG-2	GEAR ASS'Y	5-22-61		



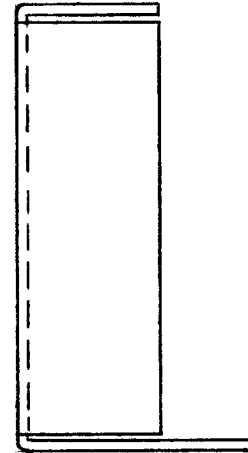
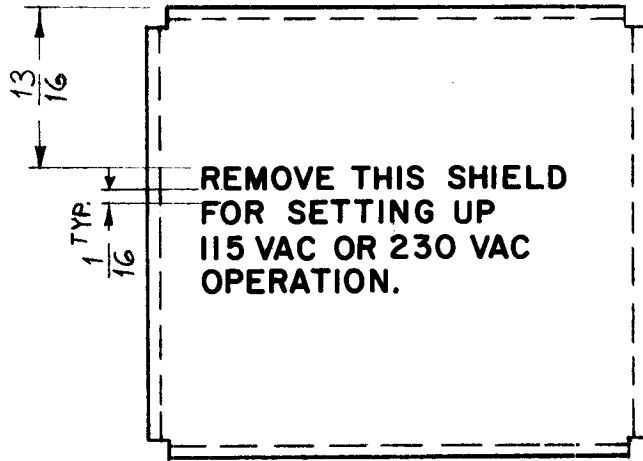
NOTE  
ALL LETTERING TO BE 1/8" HIGH,  
BLACK GOTHIC.

MARKING PROCESS: AS PER TMC SPECIFICATION S-727

REF. MS-2473'

							REQ.	ITEM	PART NO.	DESCRIPTION	SYMBOL		
							THE TECHNICAL MATERIEL CORP. MAMARONECK, NEW YORK						
							LETTERING, BRACKET POTENTIOMETER MTG.						
A	1	FOR SPARE PARTS ONLY	11/2/63	10380		<i>MJT</i>				<i>J.C. Biele</i>	<i>JWB</i>	<i>[Signature]</i>	
ISSUE	ITEM	CHANGED FROM	DATE	CH. NO.	DRAFTS	CHECKER	ENG. APP.	MATERIAL		DRAWN	CHECKED	FINAL APPROVAL	
TOLERANCES			SCALE: <b>DO NOT SCALE</b>										
DEC. DIM. ± FRAC. DIM. ± 1/64 ANGULAR DIM. ±			MAXIMUM ALLOWABLE TOLERANCES HAVE BEEN DETERMINED AND ANY DEVIATIONS WILL BE CAUSE FOR REJECTION. REMOVE ALL BURRS AND SHARP EDGES										
							TYPE & TEMPER	HEATTREAT. SPEC.	FINISH & SPEC. NO.		ELEC. DES. APP	MECH. DES. APP	
											LD-922		A

REQ. PER. UNIT	USED ON			LD-926
	MODEL	ASS'Y. N.	DATE	
1	CHG-2	OSC.	5-26-61	



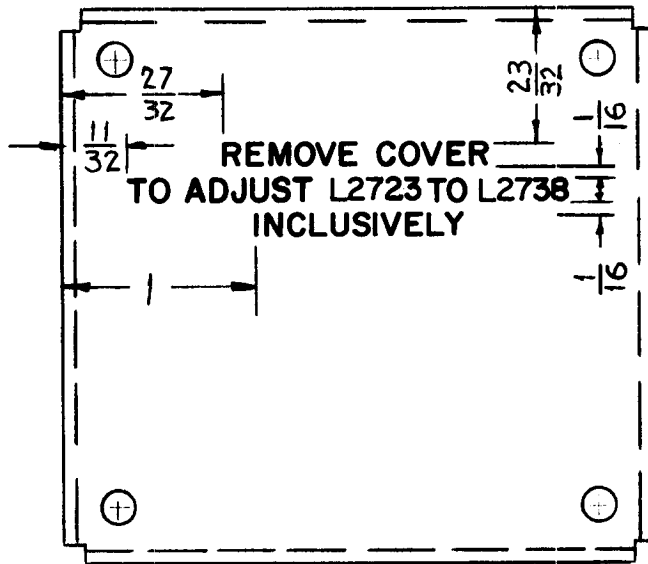
ALL LETTERING TO BE 1/8 HIGH BLACK GOTHIC.

MARKING PROCESS: AS PER TMC SPECIFICATION S-727

REF: MS-2587 (1)

							REQ.	ITEM	PART NO.	DESCRIPTION			SYMBOL					
										THE TECHNICAL MATERIEL CORP.								
										MAMARONECK, NEW YORK								
										LETTERING, TERM. STRIP, SHIELD								
ISSUE	ITEM	CHANGED FROM	DATE	CH. NO.	DRAFTS	CHECKER	ENG. APP.	MATERIAL										
TOLERANCES			SCALE: FULL (DO NOT SCALE)															
DEC. DIM. ±			MAXIMUM ALLOWABLE TOLERANCES HAVE BEEN DETERMINED AND ANY DEVIATIONS WILL BE CAUSE FOR REJECTION. REMOVE ALL BURRS AND SHARP EDGES				TYPE & TEMPER		HEATTREAT. SPEC.		DRAWN		CHECKED		FINAL APPROVAL			
FRAC. DIM. ± 1/64																		
ANGULAR DIM. ±																		
							FINISH & SPEC. NO.		ELEC. DES. APP		MECH. DES. APP		LD-926					

REQ. PER. UNIT	USED ON			LD-935
	MODEL	ASS'Y. NO.	DATE	
1	CHG-2	MF/RF	5-24-61	



ALL LETTERING TO BE 1/8 HIGH BLACK GOTHIC.  
 MARKING PROCESS: AS PER TMC SPECIFICATION S-727

REF: MS-2450 (1)

							REQ. ITEM	PART NO.	DESCRIPTION	SYMBOL	
									THE TECHNICAL MATERIEL CORP.		
							STOCK SIZE		MAMARONECK, NEW YORK		
									LETTERING, COIL COVER, REAR		
							MATERIAL				
ISSUE	ITEM	CHANGED FROM	DATE	CH. NO.	DRAFTS	CHECKER	ENG. APP.	RUZZO	<i>[Signature]</i>	<i>[Signature]</i>	
TOLERANCES			SCALE:						DRAWN	CHECKED	FINAL APPROVAL
DEC. DIM. ± FRAC. DIM. ± ANGULAR DIM. ±			MAXIMUM ALLOWABLE TOLERANCES HAVE BEEN DETERMINED AND ANY DEVIATIONS WILL BE CAUSE FOR REJECTION. REMOVE ALL BURRS AND SHARP EDGES				TYPE & TEMPER	HEAT TREAT. SPEC.	<i>[Signature]</i>	<i>[Signature]</i>	LD-935
							FINISH & SPEC. NO.		ELEC. DES. APP	MECH. DES. APP	

ALL LETTERS IN  
THIS VIEW ARE  
HIGH



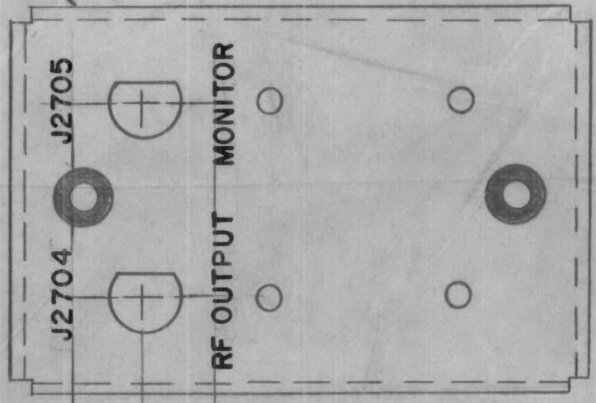
BOTTOM VIEW



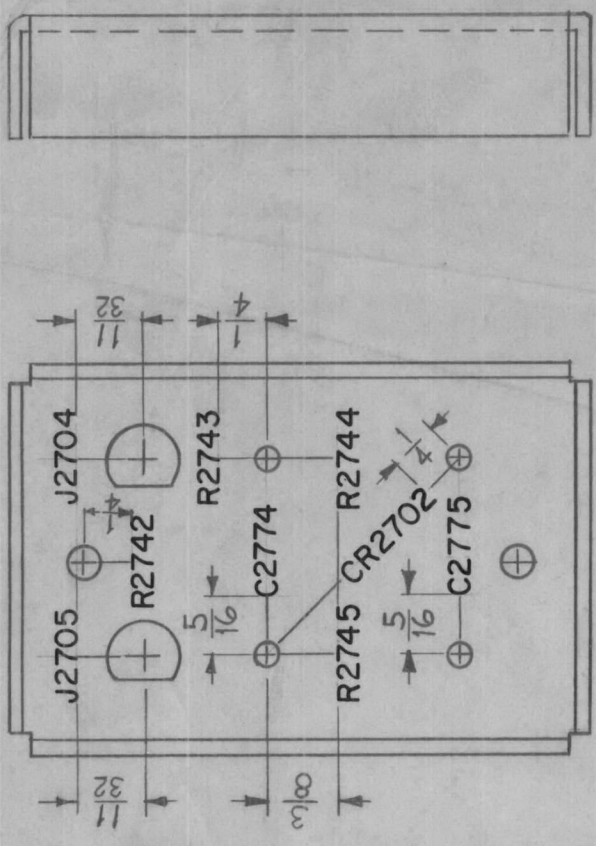
LD-936

REQ. PER UNIT	1	MODEL	CHG-2	USED ON	LD-936
ASSY. NO.	MF/RF	DATE	6-5-61		

ALL LETTERING IN THIS VIEW TO BE  $\frac{3}{32}$  HIGH.



TOP VIEW



BOTTOM VIEW

ALL LETTERING TO BE 1/8 HIGH BLACK GOTHIC, UNLESS OTHERWISE SPECIFIED.

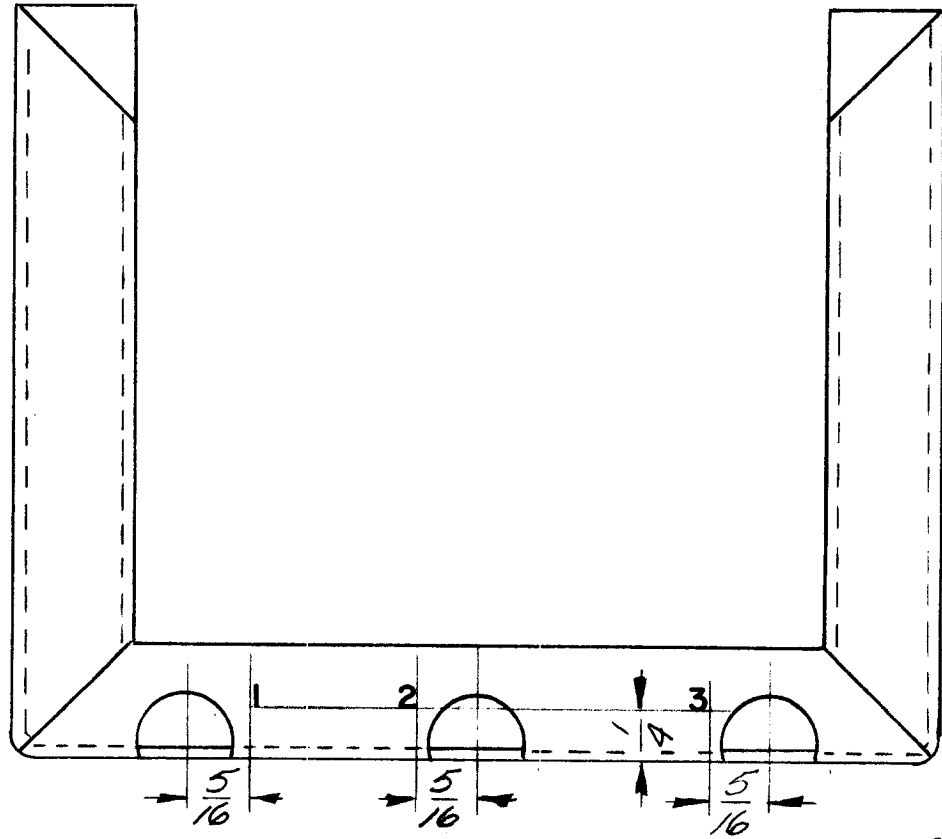
MARKING PROCESS: AS PER TMC SPECIFICATION S-77

REF: MS-2393 (1)

REQ. ITEM	PART NO.	DESCRIPTION	SYMBOL
		THE TECHNICAL MATERIEL CORP.	
		MAMARONECK, NEW YORK	
		LETTERING, RF CONNECTOR CHASSIS	
ISSUE ITEM	CHANGED FROM	DATE	CH. NO.
TOLERANCES			
SCALE: FULL (DO NOT SCALE)			
MAXIMUM ALLOWABLE TOLERANCES HAVE BEEN DETERMINED AND ANY DEVIATIONS WILL BE CAUSE FOR REJECTION. REMOVE ALL BURRS AND SHARP EDGES			
DEC. DIM. ±			
FRAC. DIM. ±			
ANGULAR DIM. ±			
		TYPE & TEMPER	HEATTREAT. SPEC.
		MATERIAL	
		STOCK SIZE	
		FINISH & SPEC. NO.	
		DRAWN	CHECKED
		ELEC. DES. APP	MECH. DES. APP
		FINAL APPROVAL	
			LD-936

REQ. PER. UNIT	USED ON			LD-949
	MODEL	ASSY. N.	DATE	
	GPE-1		9-8-61	

MARKING PROCESS: AS PER TMC SPECIFICATION S-727

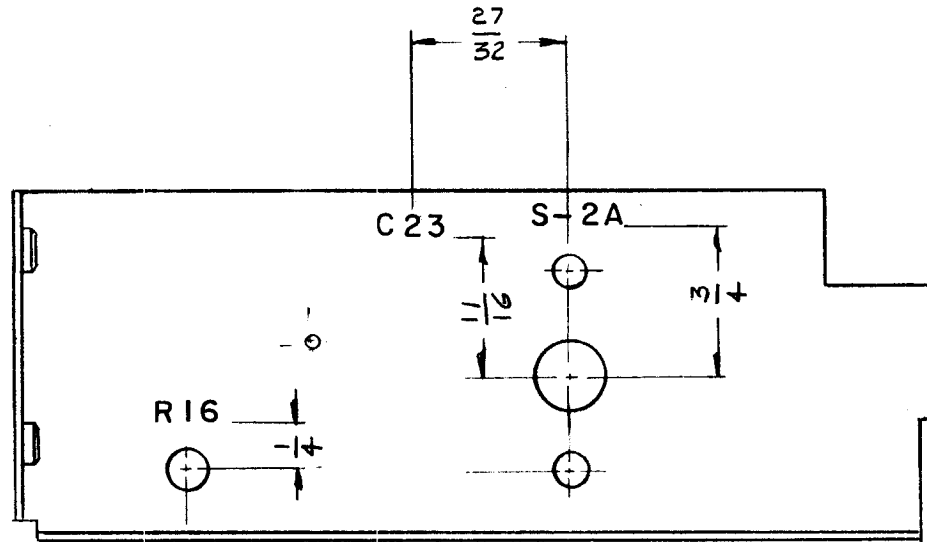


NOTE:  
ALL LETTERING 1/8  
HIGH GOTHIC, AS SHOWN.  
COLOR-BLACK.

REF: MS-2614(8)

								REQ.	ITEM	PART NO.	DESCRIPTION		SYMBOL
										THE TECHNICAL MATERIEL CORP.			
										MAMARONECK, NEW YORK			
										LETTERING, SHELL, XTAL			
										OVEN			
										GPE-1			
ISSUE	ITEM	CHANGED FROM	DATE	CH. NO.	DRAFTS	CHECKER	ENG. APP.			R. LOPEZ			
TOLERANCES			SCALE:							9-8-61	<i>[Signature]</i>	<i>[Signature]</i>	
DEC. DIM. ±			MAXIMUM ALLOWABLE TOLERANCES HAVE BEEN DETERMINED AND ANY DEVIATIONS WILL BE CAUSE FOR REJECTION. REMOVE ALL BURRS AND SHARP EDGES					TYPE & TEMPER		HEATTREAT. SPEC.	DRAWN	CHECKED	FINAL APPROVAL
FRAC. DIM. ±								FINISH & SPEC. NO.		ELEC. DES. APP		MECH. DES. APP	
ANGULAR DIM. ±													

REQ. PER UNIT	USED ON			LD-952
	MODEL	ASSY. NO.	DATE	
1	GPE-1		8-5-61	



**NOTE:**

ALL LETTERING  $\frac{1}{8}$ " HIGH BLACK GOTHIC

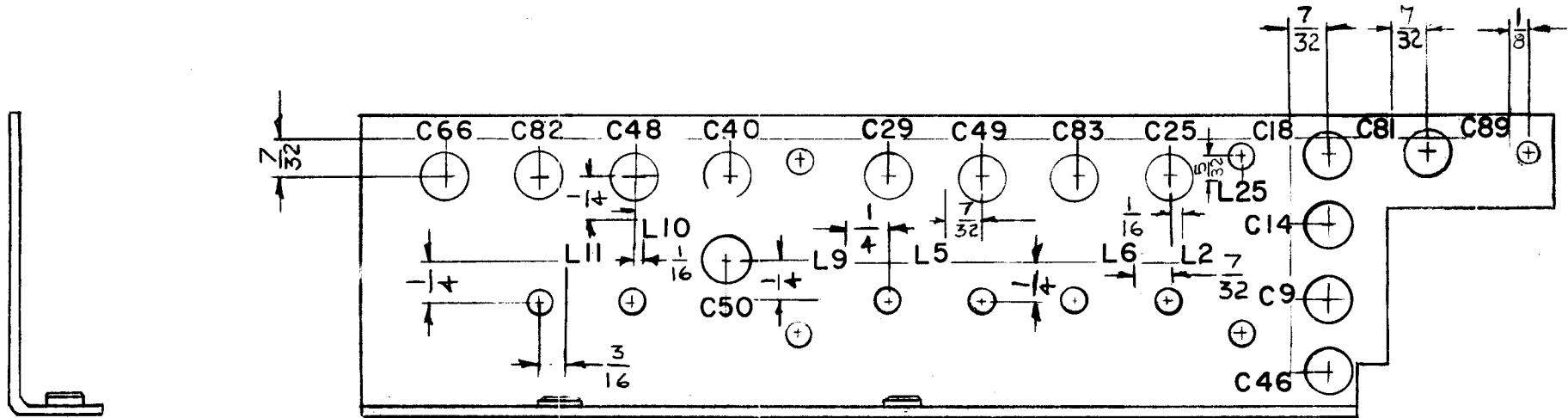
MARKING PROCESS: AS PER TMC SPECIFICATION S-727

REF: TMC. DWG. NO (2) MS-2621

ISSUE	ITEM	CHANGED FROM	DATE	CH. NO.	DRAFTS	CHECKER	ENG. APP.	REQ. ITEM	PART NO.	DESCRIPTION	SYMBOL		
										THE TECHNICAL MATERIEL CORP. MAMARONECK, NEW YORK			
									STOCK SIZE	LETTERING, FRONT R.F. SHIELD			
									MATERIAL				
									TYPE & TEMPER	HEAT TREAT. SPEC.			
									FINISH & SPEC. NO.	ELEC. DES. APP	MECH. DES. APP		
TOLERANCES			SCALE:							DRAWN: <i>[Signature]</i> CHECKED: <i>[Signature]</i> FINAL APPROVAL: <i>[Signature]</i>			
DEC. DIM. ± FRAC. DIM. ± ANGULAR DIM. ±			MAXIMUM ALLOWABLE TOLERANCES HAVE BEEN DETERMINED AND ANY DEVIATIONS WILL BE CAUSE FOR REJECTION. REMOVE ALL BURRS AND SHARP EDGES									LD-952	



REQ. PER. UNIT	USED ON			LD-953	B
	MODEL	ASSY. NO.	DATE		
1	GPE 1		9-6-61		



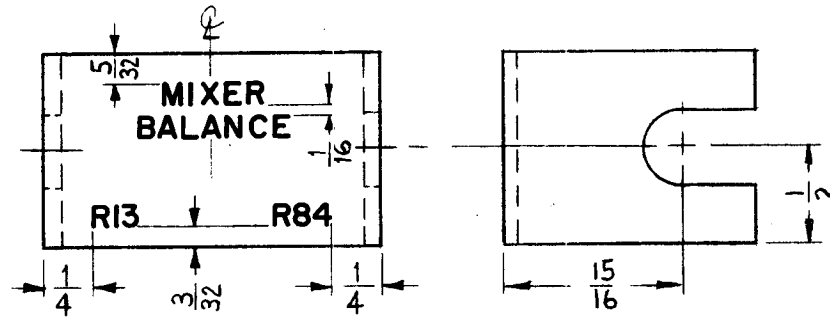
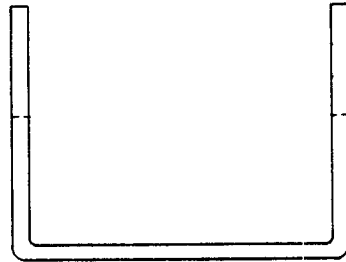
NOTE: MARKING PROCESS: AS PER TMC SPECIFICATION S-727

ALL LETTERING TO BE 1/8" HIGH BLACK GOTHIC

REF-TMC DWG. NO. (2) MS-2618

REQ.	ITEM	PART NO.	DESCRIPTION				SYMBOL
			THE TECHNICAL MATERIEL CORP.				
			MAMARONECK, NEW YORK				
B	1	C81, C89, L25 ADDED	4-18-62	6618	LE		
A	1	"C46" RELOCATED	11-8-61	5802	G.D.L.		
ISSUE	ITEM	CHANGED FROM	DATE	CH. NO.	DRAFTS	CHECKER	ENG. APP.
TOLERANCES			SCALE: DO NOT SCALE				
DEC. DIM. ±			MAXIMUM ALLOWABLE TOLERANCES HAVE BEEN DETERMINED AND ANY DEVIATIONS WILL BE CAUSE FOR REJECTION. REMOVE ALL BURRS AND SHARP EDGES				
FRAC. DIM. ±							
ANGULAR DIM. ±							
TYPE & TEMPER		HEAT TREAT. SPEC.	DRAWN		CHECKED	FINAL APPROVAL	
FINISH & SPEC. NO.		ELEC. DES. APP	MECH. DES. APP		LD-953 B		

REQ. PER. UNIT	USED ON			LD-957	A
	MODEL	ASS'Y. NO.	DATE		
1	XFK		6-22-61		

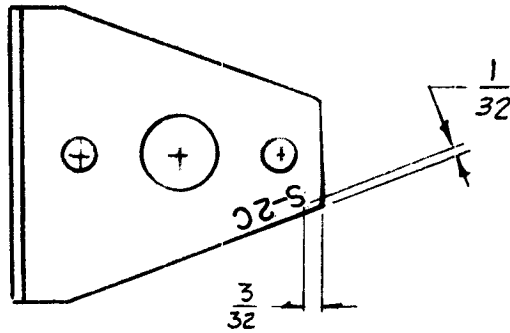


ALL LETTERING TO BE 1/8 HIGH BLACK GOTHIC.  
 MARKING PROCESS: AS PER TMC SPECIFICATION S-727

REF: MS-629 (1).

							REQ.	ITEM	PART NO.	DESCRIPTION			SYMBOL								
										THE TECHNICAL MATERIEL CORP.											
										MAMARONECK, NEW YORK											
										LETTERING, BRK'T. BALANCE CONTROLS											
A	1	RIGHT SIDE VIEW ADDED.	2-18-65	13494	22	<i>gcb</i>															
ISSUE	ITEM	CHANGED FROM	DATE	CH. NO.	DRAFTS	CHECKER	ENG. APP.	MATERIAL													
TOLERANCES			SCALE: FULL (Do Not Scale).							<i>W.O.F.</i>											
DEC. DIM. ±			MAXIMUM ALLOWABLE TOLERANCES HAVE BEEN DETERMINED AND ANY DEVIATIONS WILL BE CAUSE FOR REJECTION. REMOVE ALL BURRS AND SHARP EDGES				TYPE & TEMPER			HEATTREAT. SPEC.			DRAWN			CHECKED			FINAL APPROVAL		
FRAC. DIM. ± 1/64							FINISH & SPEC. NO.			ELEC. DES. APP			MECH. DES. APP			LD-957			A		
ANGULAR DIM. ±																					

REQ. PER UNIT	USED ON			LD-962
	MODEL	ASSY. NO.	DATE	
1	GPE-1		8-5-61	

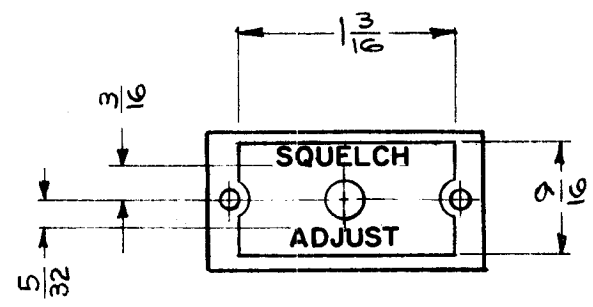


ALL LETTERING  $\frac{1}{8}$ " HIGH  
 BLACK GOTHIC,  
 MARKING PROCESS: AS PER TMC SPECIFICATION S-727

REF-TMC DWG. NO. (1) MS-2638

								REQ.	ITEM	PART NO.	DESCRIPTION	SYMBOL					
										THE TECHNICAL MATERIEL CORP. MAMARONECK, NEW YORK							
										LETTERING, SWITCH BRACKET							
										R. LOPEZ 9-5-61							
										AB							
										FINAL APPROVAL							
										LD-962							
ISSUE	ITEM	CHANGED FROM	DATE	CH. NO.	DRAFTS	CHECKER	ENG. APP.			ELEC. DES. APP. MECH. DES. APP.							
TOLERANCES			SCALE:														
DEC. DIM. ±			MAXIMUM ALLOWABLE TOLERANCES HAVE BEEN DETERMINED AND ANY DEVIATIONS WILL BE CAUSE FOR REJECTION. REMOVE ALL BURRS AND SHARP EDGES					TYPE & TEMPER		HEATTREAT. SPEC.		DRAWN		CHECKED			
FRAC. DIM. ±																	
ANGULAR DIM. ±																	
								FINISH & SPEC. NO.									

REQ. PER. UNIT	USED ON		LD-964 B
	MODEL	ASS'Y. NO.	
			8-16-61



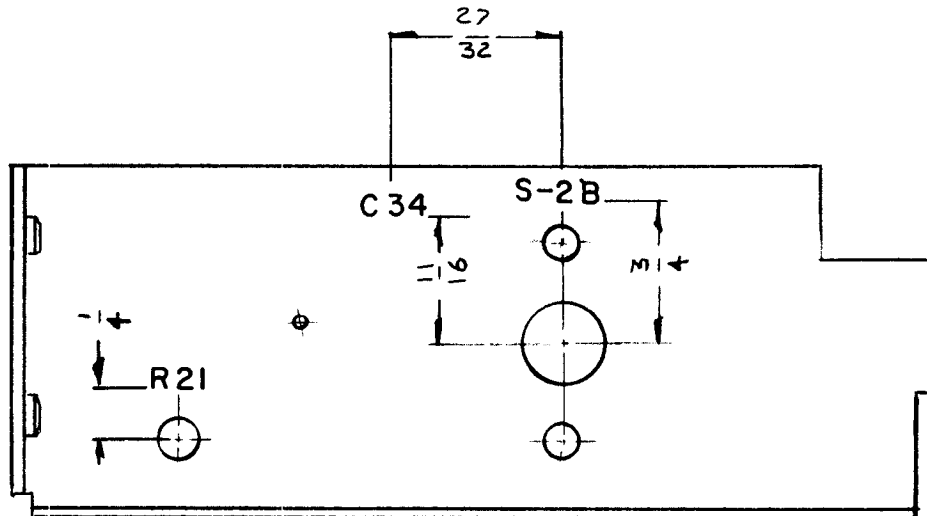
ENGRAVING TO BE 3/32 HIGH WHITE GOTHIC  
BLACK MATTE BACKGROUND & CLEAR LACQUER.

REF: MS-2645 (1)

REQ.	ITEM	PART NO.	DESCRIPTION				SYMBOL
			THE TECHNICAL MATERIEL CORP. MAMARONECK, NEW YORK				
B	1		ENGRAVING, SQUELCH PLATE				
A	2						
	1						
ISSUE	ITEM	CHANGED FROM	DATE	CH. NO.	DRAFTS	CHECKER	ENG. APP.
TOLERANCES			SCALE:				
DEC. DIM. ± FRAC. DIM. ± ANGULAR DIM. ±			MAXIMUM ALLOWABLE TOLERANCES HAVE BEEN DETERMINED AND ANY DEVIATIONS WILL BE CAUSE FOR REJECTION. REMOVE ALL BURRS AND SHARP EDGES				
		TYPE & TEMPER	HEATTREAT. SPEC.	DRAWN		CHECKED	FINAL APPROVAL
		FINISH & SPEC. NO.		ELEC. DES. APP		MECH. DE . APP	

REQ. PER. UNIT	USED ON		
	MODEL	ASSY. NO.	DATE
1	GPE-1		8-5-61

LD-971



NOTE

ALL LETTERING  $\frac{1}{8}$ " HIGH BLACK GOTHIC

MARKING PROCESS: AS PER TMC SPECIFICATION S-727

REF-TMC DWG. NO. (2) MS-2621.

								REQ. ITEM	PART NO.	DESCRIPTION	SYMBOL	
								THE TECHNICAL MATERIEL CORP. MAMARONECK, NEW YORK				
								LETTERING, REAR, RE SHIELD				
								R. LOPEZ 9-5-61				
								DRAWN				
								CHECKED				
								FINAL APPROVAL				
								LD-971				
								ELEC. DES. APP MECH. DES. APP				
ISSUE	ITEM	CHANGED FROM	DATE	CH. NO.	DRAFTS	CHECKER	ENG. APP.					
TOLERANCES			SCALE:									
DEC. DIM. ±			MAXIMUM ALLOWABLE TOLERANCES HAVE BEEN DETERMINED AND ANY DEVIATIONS WILL BE CAUSE FOR REJECTION. REMOVE ALL BURRS AND SHARP EDGES					TYPE & TEMPER		HEATTREAT. SPEC.		FINISH & SPEC. NO.
FRAC. DIM. ±								DRAWN		CHECKED		
ANGULAR DIM. ±												

THE CONTENTS OF THIS DRAWING ARE THE EXCLUSIVE PROPERTY OF THE TECHNICAL MATERIEL CORP. ITS UNAUTHORIZED USE OR REPRODUCTION IN WHOLE OR IN PART IS STRICTLY FORBIDDEN.

REQ. PER UNIT

1

USED ON

MODEL

GPT-40K

ASS'Y. NO.

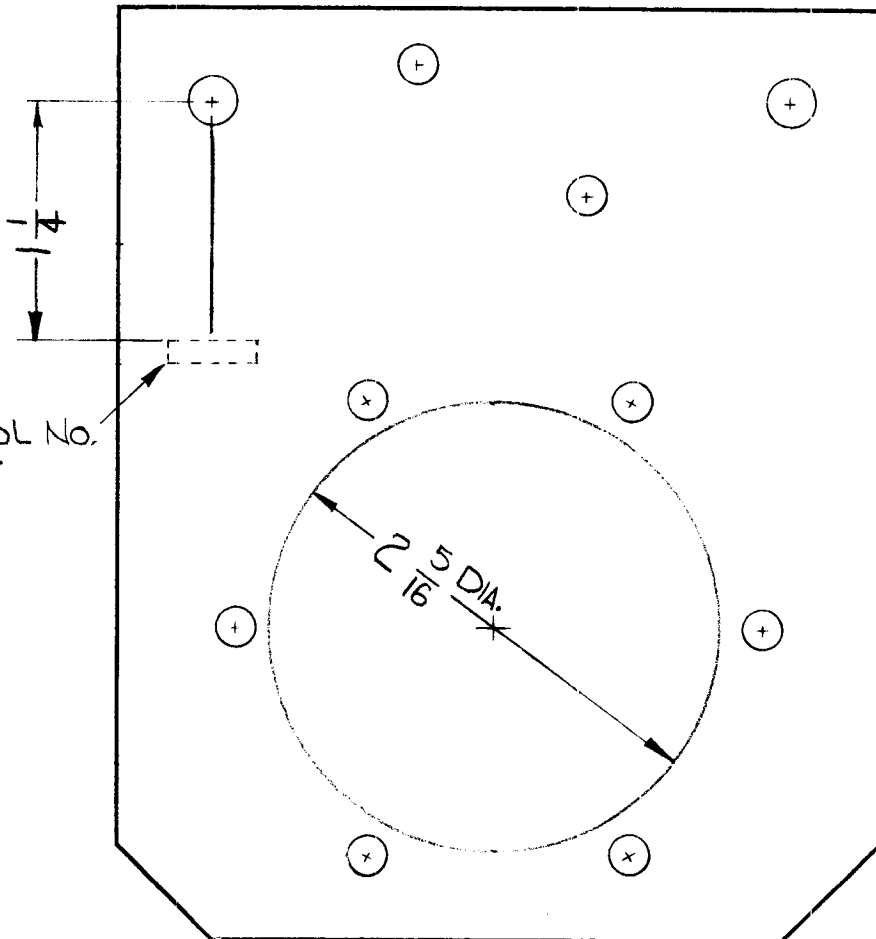
MODE SW

DATE

11-7-61

LD 982

D



FOR SYMBOL No. SEE CHART

MARKING PROCESS:  
AS PER TMC SPEC S-727.  
ALL LETTERING 1/8" HIGH  
BLACK GOTHIC

TMC PART NO.	SYMBOL NUMBER	USED ON MODEL	ASS'Y. No	QTY.
LD982	C949	GPT-40K	MODE SW	1
LD982-2	C911	TSTE-10K	A5175	1

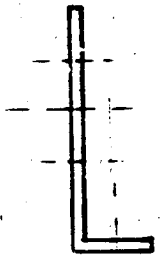
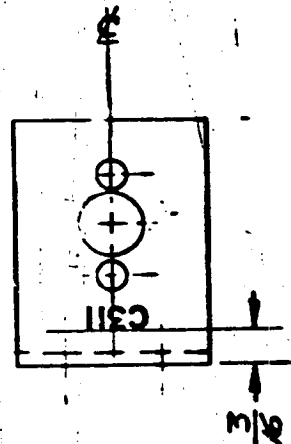
REF-TMC DWG NO. PX-625 (2)

REV	DESCRIPTION	DATE	CH. NO.	DRAFTS	CHECKER	ENG. APP.	REQ.	ITEM	PART NO.	DESCRIPTION	SYMBOL		
D	ADDED P/N CHART	3-21-66	15979	HLA	[Signature]	[Signature]				THE TECHNICAL MATERIEL CORP. MAMARONECK, NEW YORK LETTERING, PLATE, CAP MTC. LOAD RESISTOR	D		
C	CLERICAL CHANGE	1-15-65	---	[Signature]	[Signature]				STOCK SIZE				
B	SYM TC900 DELETED	7-14-64	11819	[Signature]	[Signature]				MATERIAL				
A	2 5/16 Dia. Circle Added	12-8-61	6007	[Signature]	[Signature]								
SYM	DESCRIPTION	DATE	CH. NO.	DRAFTS	CHECKER	ENG. APP.							
UNLESS OTHERWISE SPECIFIED:		SCALE: FULL, DO NOT SCALE									G.D.L.	[Signature]	
DIMENSIONS ARE IN INCHES		MAXIMUM ALLOWABLE TOLERANCES HAVE BEEN DETERMINED AND ANY DEVIATIONS WILL BE CAUSE FOR REJECTION.									DRAWN	CHECKED	FINAL APPROVAL
TOLERANCES N		REMOVE ALL BURRS AND SHARP EDGES											
FRAC. ± 1/64 DEC. ± .005 ANGLES ± 1/2°													LD 982
							FINISH & SPEC. NO.	ELEC. DES. APP.	MECH. DES. APP.				

THE CONTENTS OF THIS DRAWING ARE THE EXCLUSIVE PROPERTY OF THE TECHNICAL MATERIEL CORP. ITS UNAUTHORIZED USE OR REPRODUCTION IN WHOLE OR IN PART IS STRICTLY FORBIDDEN.

REQ. PER UNIT	USED ON		
	MODEL	ASBY. NO.	DATE
1	VOX-	AD-100	10-3-61
1	PMD	AD-100	"
1	RTF	AD-100	"
1	CMO	AD-103	"

LD-985



LETTERING TO BE 1/8 HIGH GOTHIC.  
 COLOR - BLACK.  
 MARKING PROCESS: AS PER TMC SPECIFICATION S-727

REF: MS-309

						REQ.	ITEM	PART NO.	DESCRIPTION	SYMBOL
									THE TECHNICAL MATERIEL CORP. MAMARONECK, NEW YORK	
						STOCK SIZE			BRACKET, OVEN CONDENSER	
						MATERIAL			LETTERING	
SYM	DESCRIPTION	DATE	CH. NO.	DRAFTS	CHECKER	ENG. APP.			wh	file
UNLESS OTHERWISE SPECIFIED: DIMENSIONS ARE IN INCHES TOLERANCES ON FRAC. ± 1/64 DEC. ± .005 ANGLES ± 1/2°						SCALE:		TYPE & TEMPER		DRAWN
						MAXIMUM ALLOWABLE TOLERANCES HAVE BEEN DETERMINED AND ANY DEVIATIONS WILL BE CAUSE FOR REJECTION. REMOVE ALL BURRS AND SHARP EDGES		HEAT TREAT. SPEC.		CHECKED
								FINISH & SPEC. NO.		FINAL APPROVAL
										LD-985
								ELEC. DES. APP.		MRCH. DES. APP.





