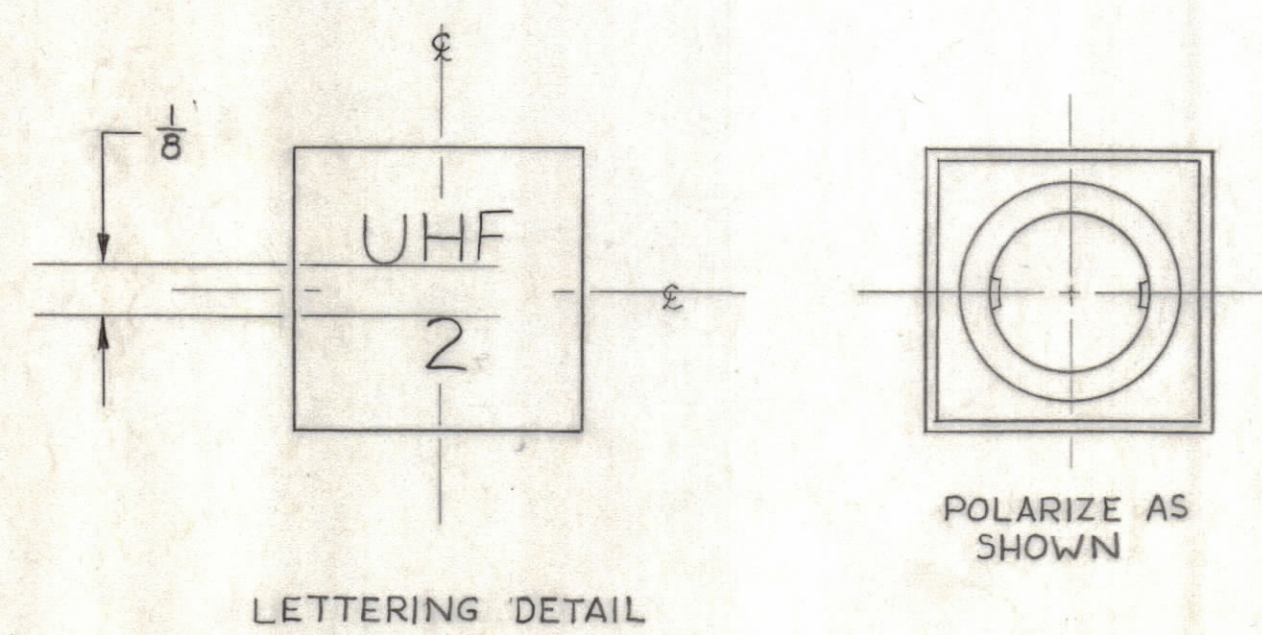


REVISIONS						
ZONE	LTR	DESCRIPTION	DATE	E.M.N.NO	DRAFT	CHKD APPD
	X	EXP. RELEASE	6/3/70			
		ORIGINAL RELEASE FOR PRODUCTION	6/6/70			

LI8004-1	MF/HF 1	VLF 1	MF/HF 2	VLF 2	MF/HF 3	VLF 3
LI8004-2	UHF 1	VHF 1	UHF 2	VHF 2	UHF 3	VHF 3

LETTERING ≠ NUMERALS TO BE 1/8 HIGH BLACK GOTHIC SPACED AS SHOWN IN LETTERING DETAIL



REF: LICON #01-911411 QTY 6 EACH SET

1	AX8020	
1	AX8004	
QTY / UNIT	MODEL USED ON	ASS'Y NO.
APPLICATION		
CODE		

UNLESS OTHERWISE SPECIFIED DIMENSIONS ARE IN INCHES AND INCLUDE CHEMICALLY APPLIED OR PLATED FINISHES

TOLERANCES ON

DECIMALS	FRACTIONS
.X ± .05	± 1/64
.XX ± .01	ANGLES
.XXX ± .005	± 0°-30'

QTY. REQ.	ITEM	PART NO.	DESCRIPTION	SYMBOL
LIST OF MATERIAL				
FINAL APPROVAL		DATE	THE TECHNICAL MATERIEL CORP. MAMARONECK, NEW YORK <i>LETTERING PER GENERAL</i> LENS SET, IND. SW. <i>DATE SET MARKED</i>	
MECH. DES.		DATE		
ELECT. DES.		DATE		
CHECKED		DATE		
DRAWN		DATE		
MATERIAL			SIZE	CODE IDENT. NO.
FINISH			C	82679
			DWG. NO.	
			LI8004	
			ISSUE	
			1	
SCALE			SHEET	OF

NOTICE TO PERSONS RECEIVING THIS DRAWING

THE TECHNICAL MATERIEL CORPORATION claims proprietary right in the material disclosed hereon. This drawing is issued in confidence for engineering information only and may not be reproduced or used to manufacture anything shown hereon without permission from THE TECHNICAL MATERIEL CORPORATION to the user. This drawing is loaned for mutual assistance and is subject to recall at any time.

LI8004 4100817