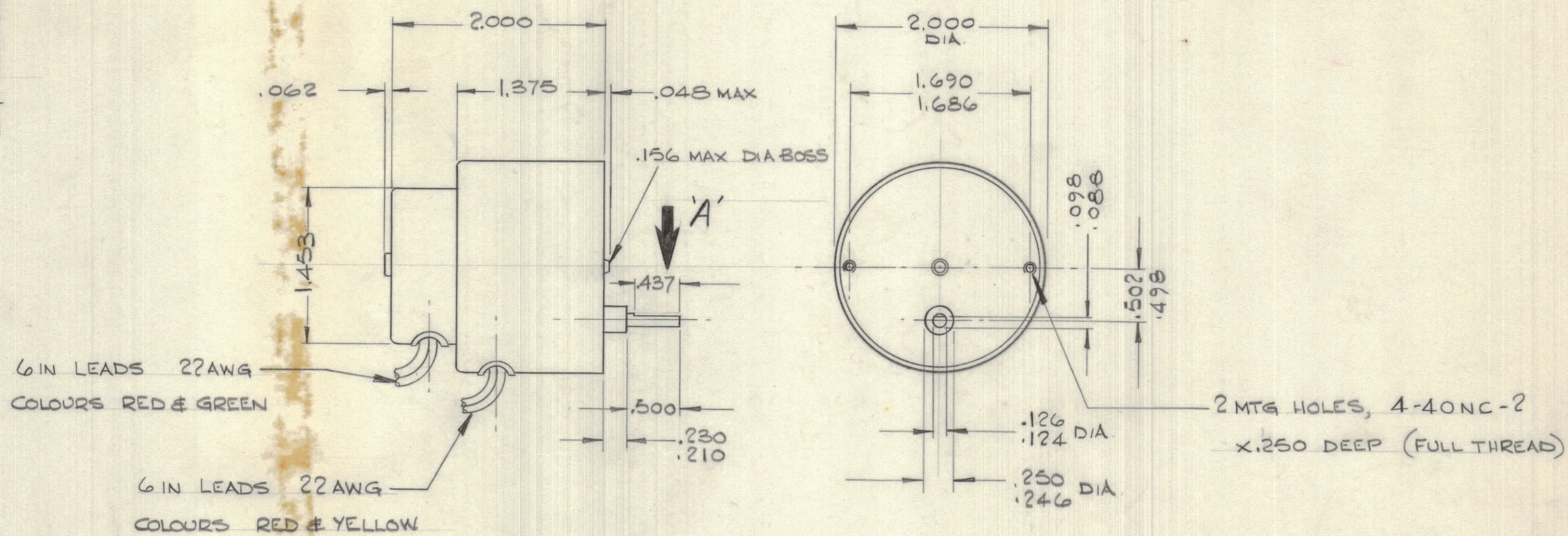


IF IT IS FOUND DESIRABLE TO CHANGE ANY TOLERANCE OR OTHER DETAIL SPECIFIED ON THIS DRAWING NOTIFY THE PURCHASER PROMPTLY.				DIMENSIONS IN INCHES UNLESS OTHERWISE SPECIFIED			
MAXIMUM ALLOWABLE TOLERANCES HAVE BEEN DETERMINED AND DEVIATIONS WILL BE CAUSE FOR REJECTION. REMOVE ALL BURRS AND SHARP EDGES.							
ISSUE	ITEM	CHANGED FROM	DATE	CH. NO.	DRAFTS	CHECKER	ENG. APP.
Ø		REL TO PRODUCE.	5 OCT 70				NAT
A		REV AS PER CEMN	70 NOV 2/70				NAT
B		REV PER CEMN	29 MAR 71	943	PJ		
C		REV. PER CEMN	10 MAY 71	966	LAT		
D		REV. PER CEMN	1 OCT 71	1064	DR.		

REQ.	ITEM	PART NO.	DESCRIPTION	SYMBOL
------	------	----------	-------------	--------



REVERSIBLE, CAPACITOR RUN, SYNCHRONOUS HYSTERESIS MOTOR

MECHANICAL DATA

SHAFT SPEED - 5 RPM  
 STARTING TORQUE - 12.5 IN.OZ (ZERO BACKLASH)  
 RUNNING TORQUE - 15.0 IN.OZ

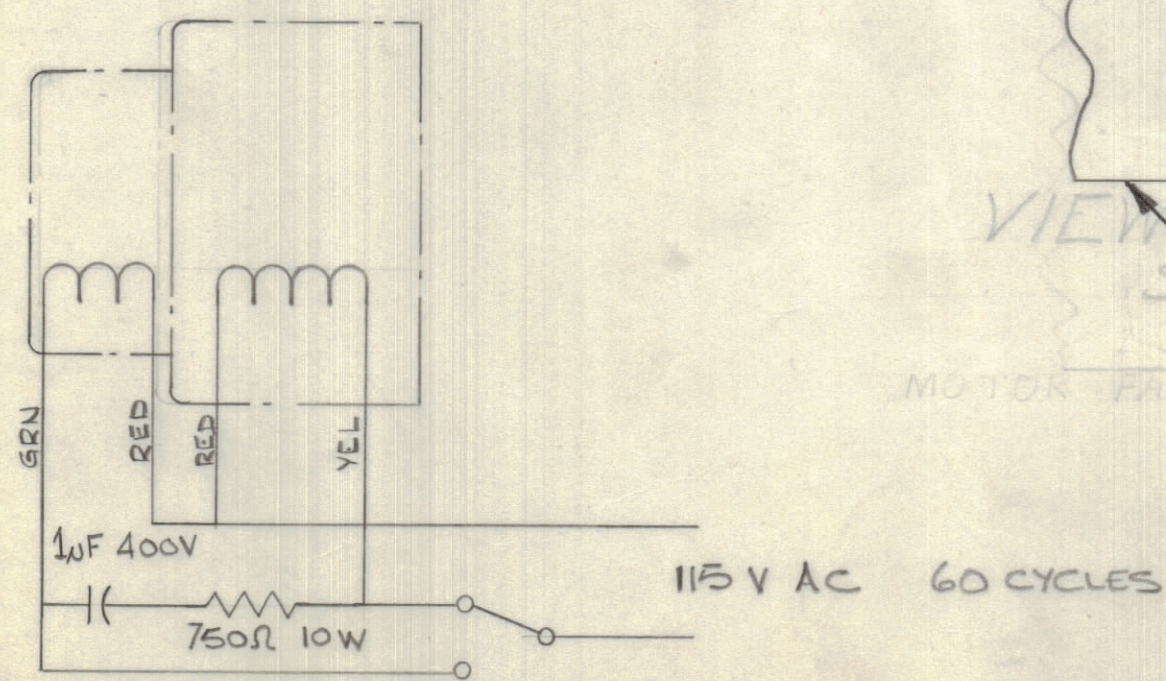
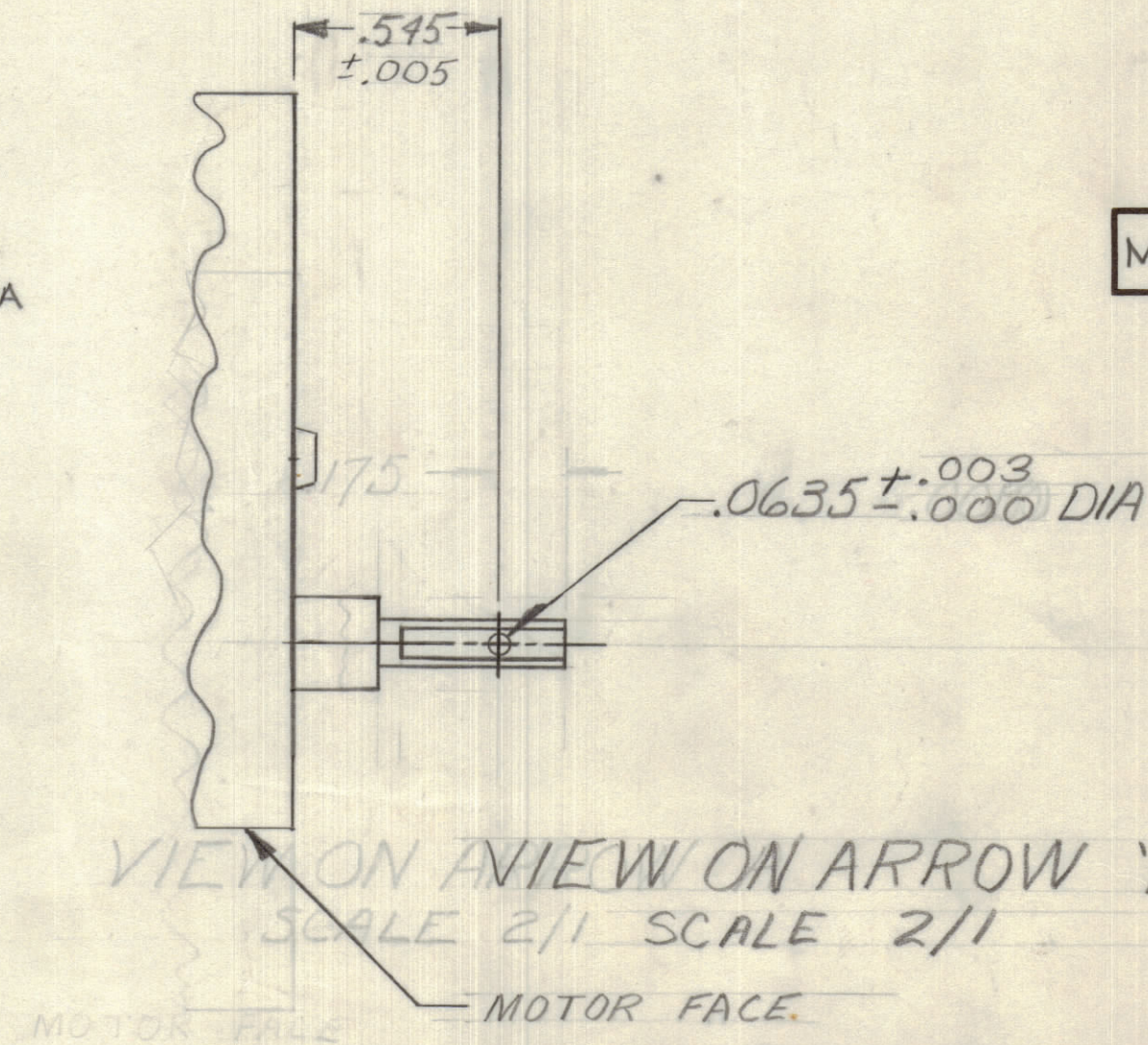
ELECTRICAL DATA

VOLTAGE - 115 V. AC 60 CYCLES  
 POWER CONSUMPTION - 8 WATTS, 11 VA

NOTE: OUTPUT SHAFT WILL NOT BE CONNECTED TO ROTOR WITH POWER OFF (SHIFT MECHANISM)

SHAFT MATERIAL:  
 BRASS  
 OR STAINLESS STEEL TYPE 303  
 COUD A  
 QQ-S-763

MO 10001 D



S401-462

TOLERANCES		SCALE: 1:1
ALL OTHERS	DEC. DIM. ± .015 FRAC. DIM. ± 1/64 ANGULAR DIM. ± 0° 30'	DRILL, PUNCH, COMMERCIAL STOCK SIZES AND MANUFACTURERS TOLERANCES ARE NOT INCLUDED.

WIRING DIAGRAM

LPA-1K	PROJECT NO.	ASSY. NO.	5 OCT 70
MODEL	PROJECT NO.	ASSY. NO.	DATE

TMC (Canada) LIMITED OTTAWA ONTARIO			
MOTOR SYNCH. FRACT. HP.			
DRAWN	ELEC. DES. APP.	MECH. DES. APP.	
CHECKED	FINAL APPROVAL		
MO 10001 D			