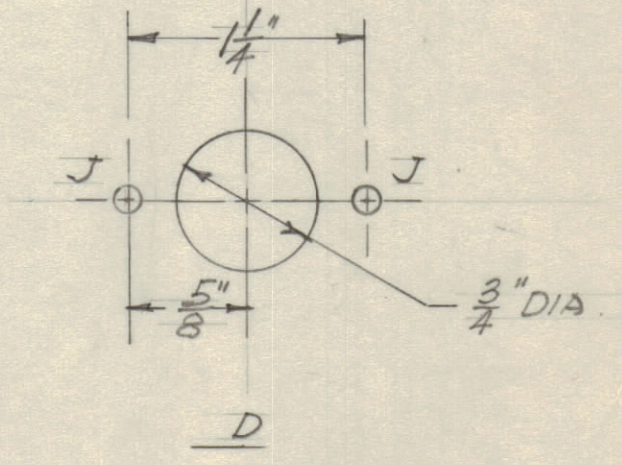
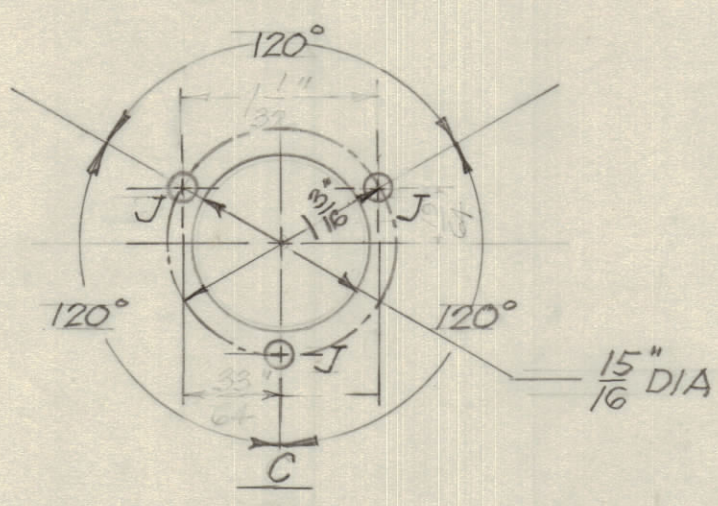
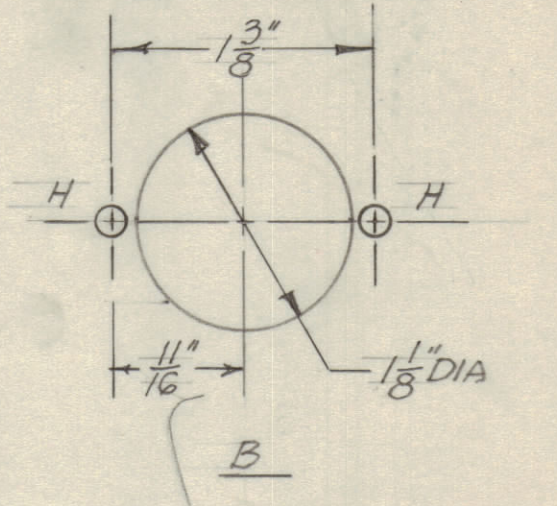
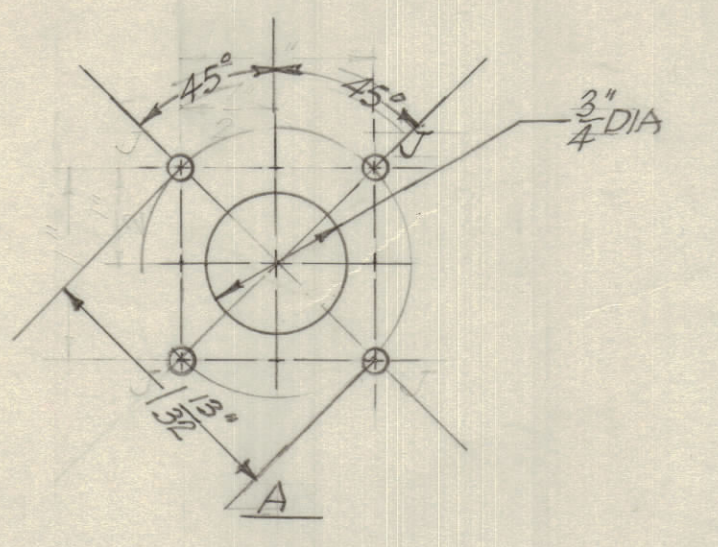
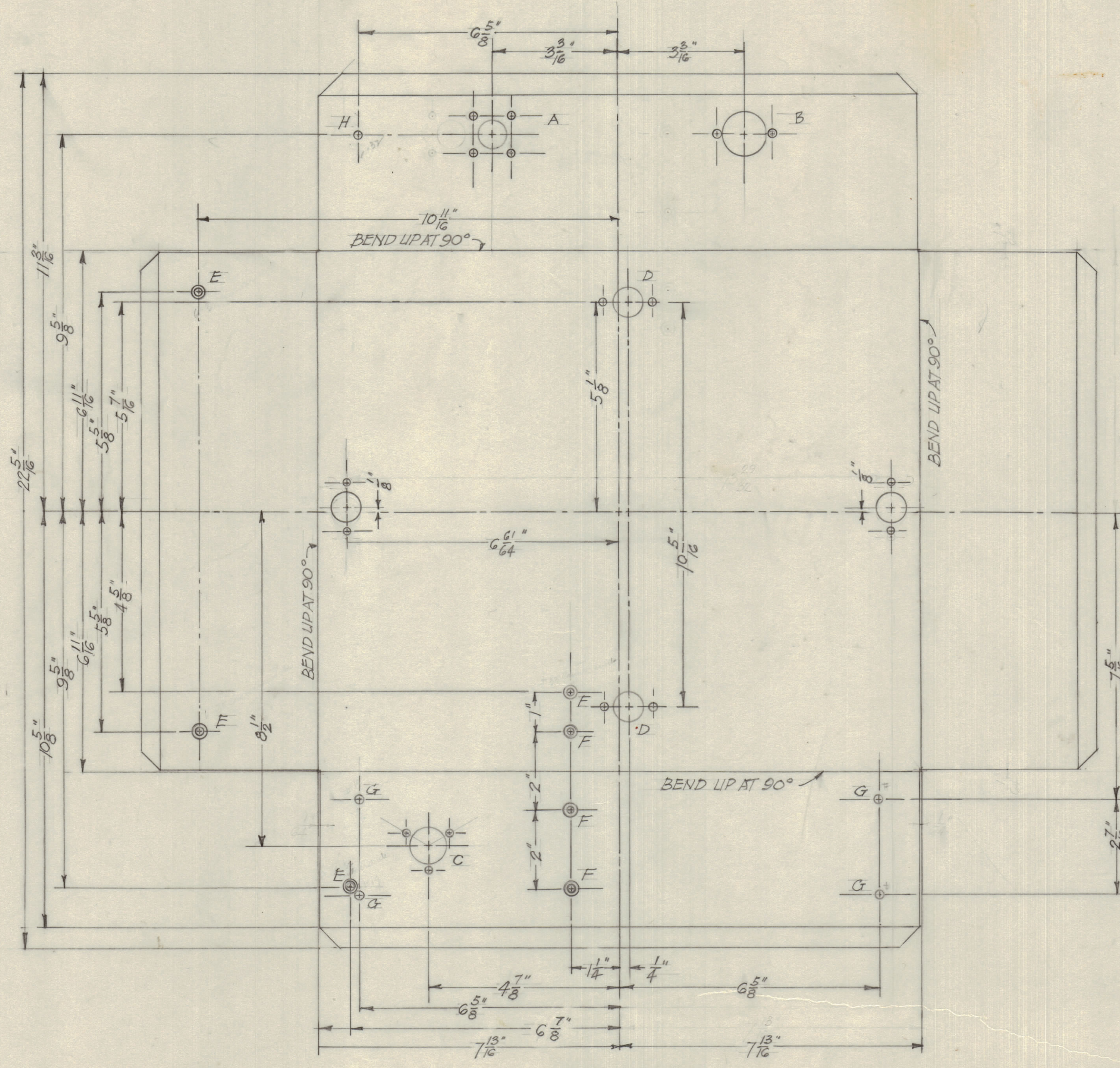


IF IT IS FOUND DESIRABLE TO CHANGE ANY TOLERANCE OR OTHER DETAIL, SPECIFIED ON THIS DRAWING NOTIFY THE PURCHASER PROMPTLY.
 MAXIMUM ALLOWABLE TOLERANCES HAVE BEEN DETERMINED AND DEVIATIONS WILL BE CAUSE FOR REJECTION. REMOVE ALL BURRS AND SHARP EDGES

NOTICE TO PERSONS RECEIVING THIS DRAWING

THE TECHNICAL MATERIEL CORPORATION claims proprietary right in the material disclosed hereon. This drawing is issued in confidence for engineering information only and may not be reproduced or used to manufacture anything shown hereon without permission from THE TECHNICAL MATERIEL CORPORATION to the user. This drawing is loaned for mutual assistance and is subject to recall at any time.

Property of:
 THE TECHNICAL MATERIEL CORPORATION
 MAMARONECK, NEW YORK



- E - 9/64" DRILL & C.S.K. FOR 6-32 F.H. MACHINE SCREW.
- F - 1/8" " " " 4-40 " " "
- G - 3/16" " " " " 8-32 " " "
- H - 9/64" " " " " 6-32 " " "
- J - 1/8" " " " " 4-40 " " "

SCALE: FULL SIZE

SCALE: HALF SIZE

REFER TO DWG MS-10047 FOR TEMPLATE

REQ. ITEM	PART NO.	DESCRIPTION	SYMBOL
0.064" SHEET		TMC (Canada) LIMITED	
STOCK SIZE		OTTAWA ONTARIO	
ALUMINUM		CHASSIS FOR RECORD	
MATERIAL WEIGHT PER PC.		PLAYER PART OF CUS/SH 601/2	
ALCAN 4137-0		DRAWN: JRH	
TYPE & TEMPER		ELEC. DES. APP.	
HEAT TREAT. SPEC.		MECH. DES. APP.	
FINISH & SPEC. NO.		CHECKED	
MODEL		DATE	
PROJECT NO.		DATE	
ASSY. NO.		DATE	
USED ON		DATE	
10028		28-5-54	
TMC SPEC S-10125-107		FINAL APPROVAL	
		MS-10048	

ISSUE	ITEM	CHANGED FROM	DATE	CN. NO.	DRAFTS	CHECKER	ENG. APP.
TOLERANCES							
SCALE: AS NOTED							
DRILL, PUNCH, COMMERCIAL STOCK SIZES AND MANUFACTURERS TOLERANCES ARE NOT INCLUDED.							
ALL OTHERS	DEC. DIM. ±						
	FRAC. DIM. ±						
	ANGULAR DIM. ±						

MS-10048