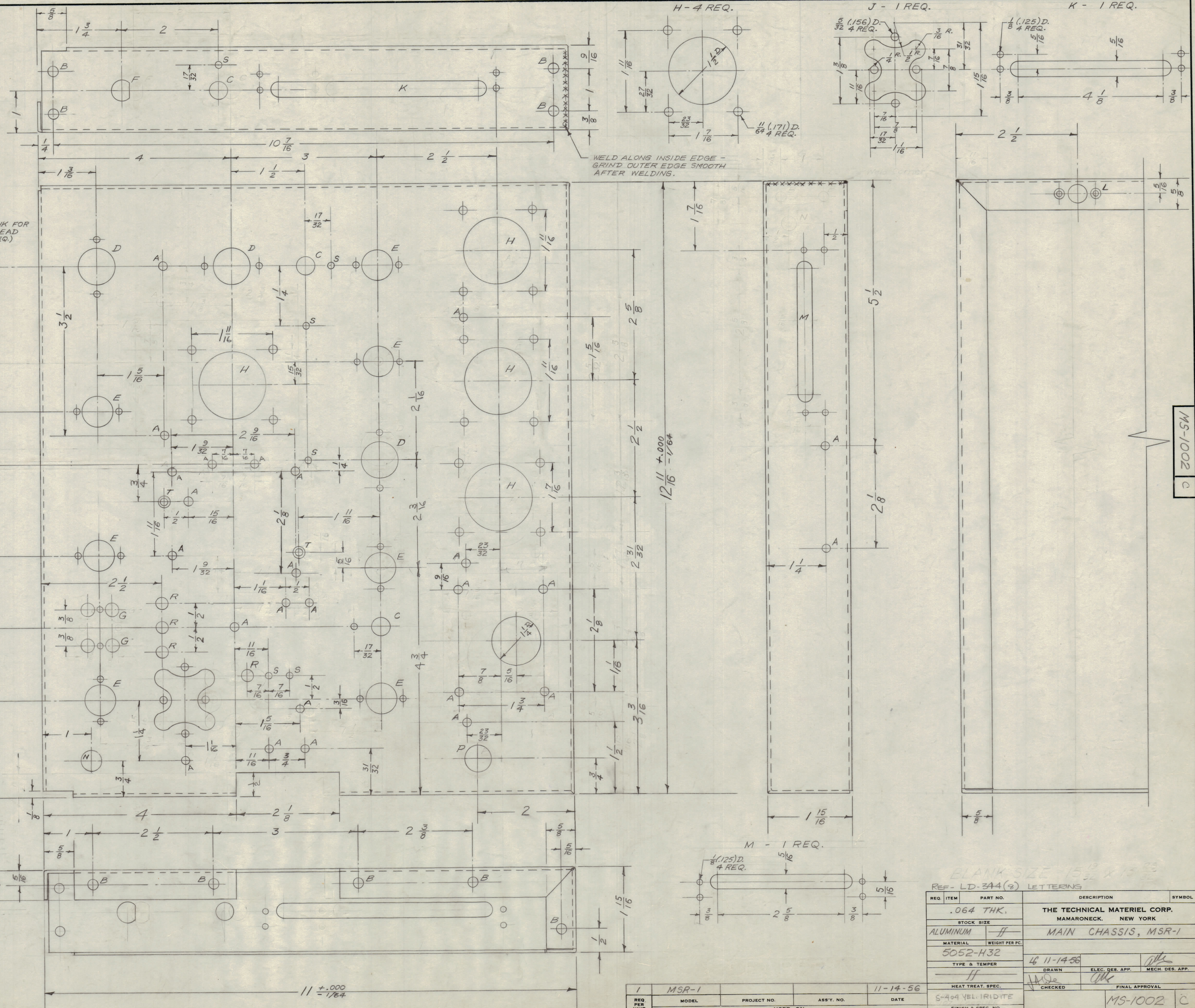
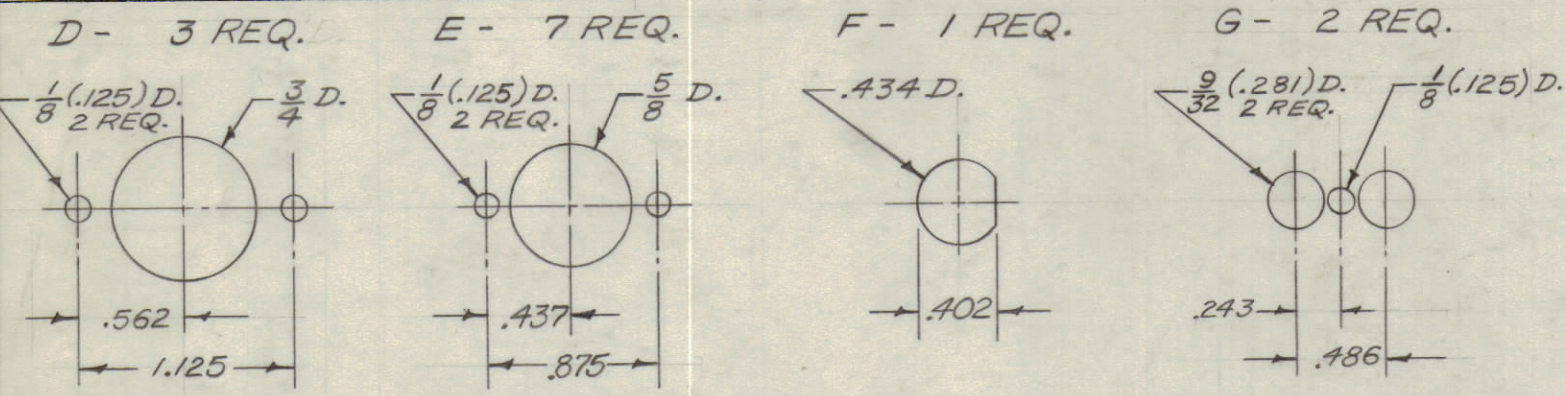


IF IT IS FOUND DESIRABLE TO CHANGE ANY TOLERANCE OR OTHER DETAIL SPECIFIED ON THIS DRAWING NOTIFY THE PURCHASER PROMPTLY.  
 MAXIMUM ALLOWABLE TOLERANCES HAVE BEEN DETERMINED AND DEVIATIONS WILL BE CAUSE FOR REJECTION. REMOVE ALL BURRS AND SHARP EDGES.

A -  $\frac{1}{64}$  (.171) D. 26 HOLES REQ.  
 B -  $\frac{13}{64}$  (.203) D. 12 HOLES REQ.  
 C -  $\frac{3}{8}$  (.375) D. 3 HOLES REQ.



ISSUE	ITEM	CHANGED FROM	DATE	CN. NO.	DRAFTS	CHECKER	ENG. APP.
C	1	S-404 YEL. IRIDITE WAS	10/27/57	1201	AB	BMN	
B	1	S-121 CAUSTIC DIP	5/21/57	2	AB	K	
A	3	A* HOLE RELOCATED	4/12/57	1	AB		
A	2	DIM. CORRECTED	4/12/57	1	AB		
A	1	TWO 'A' HOLES DELE.	4/12/57	1	AB		
A	1	T HOLES ADDED (2)	4/12/57	1	AB		

TOLERANCES  
 ALL DEC. DIM.  $\pm .005$   
 OTHERS FRACTIONAL DIM.  $\pm 1/64$   
 ANGULAR DIM.  $\pm$

SCALE: FULL  
 DRILL PUNCH, COMMERCIAL STOCK  
 SIZES AND MANUFACTURERS  
 TOLERANCES ARE NOT INCLUDED.

BLANK SIZE 15 1/2 X 15 1/2  
 REF - LD-344 (2) LETTERING

REQ. ITEM	PART NO.	DESCRIPTION	SYMBOL
	.064 THK.	THE TECHNICAL MATERIEL CORP.	
	STOCK SIZE	MAMARONECK, NEW YORK	
ALUMINUM	FF	MAIN CHASSIS, MSR-1	
	5052-H32		
	TYPE & TEMPER	46 11-14-56	
	DRAWN	ELEC. DES. APP.	MECH. DES. APP.
	HEAT TREAT. SPEC.	CHECKED	FINAL APPROVAL
	S-404 YEL. IRIDITE		MS-1002 C
	FINISH & SPEC. NO.		