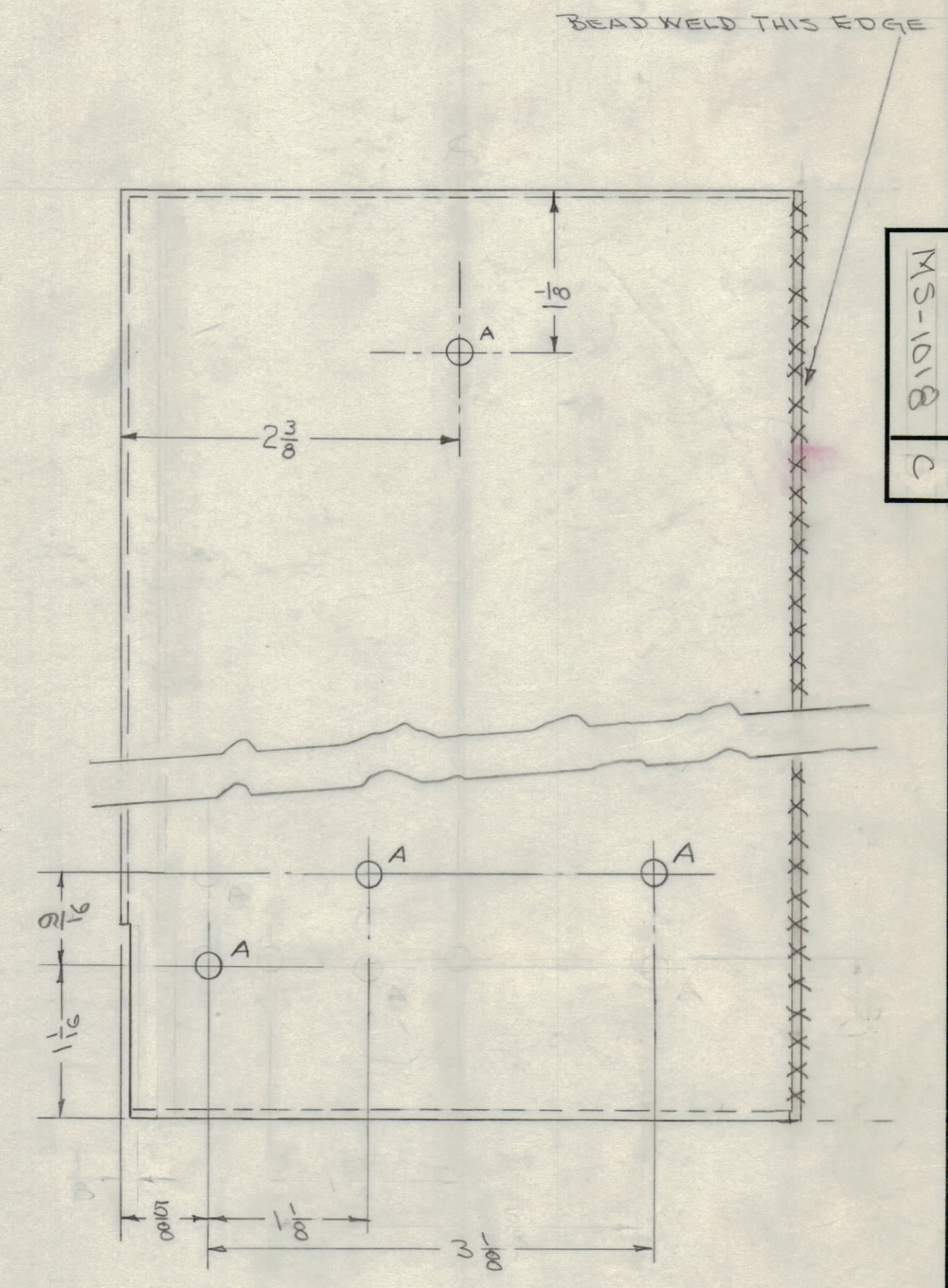
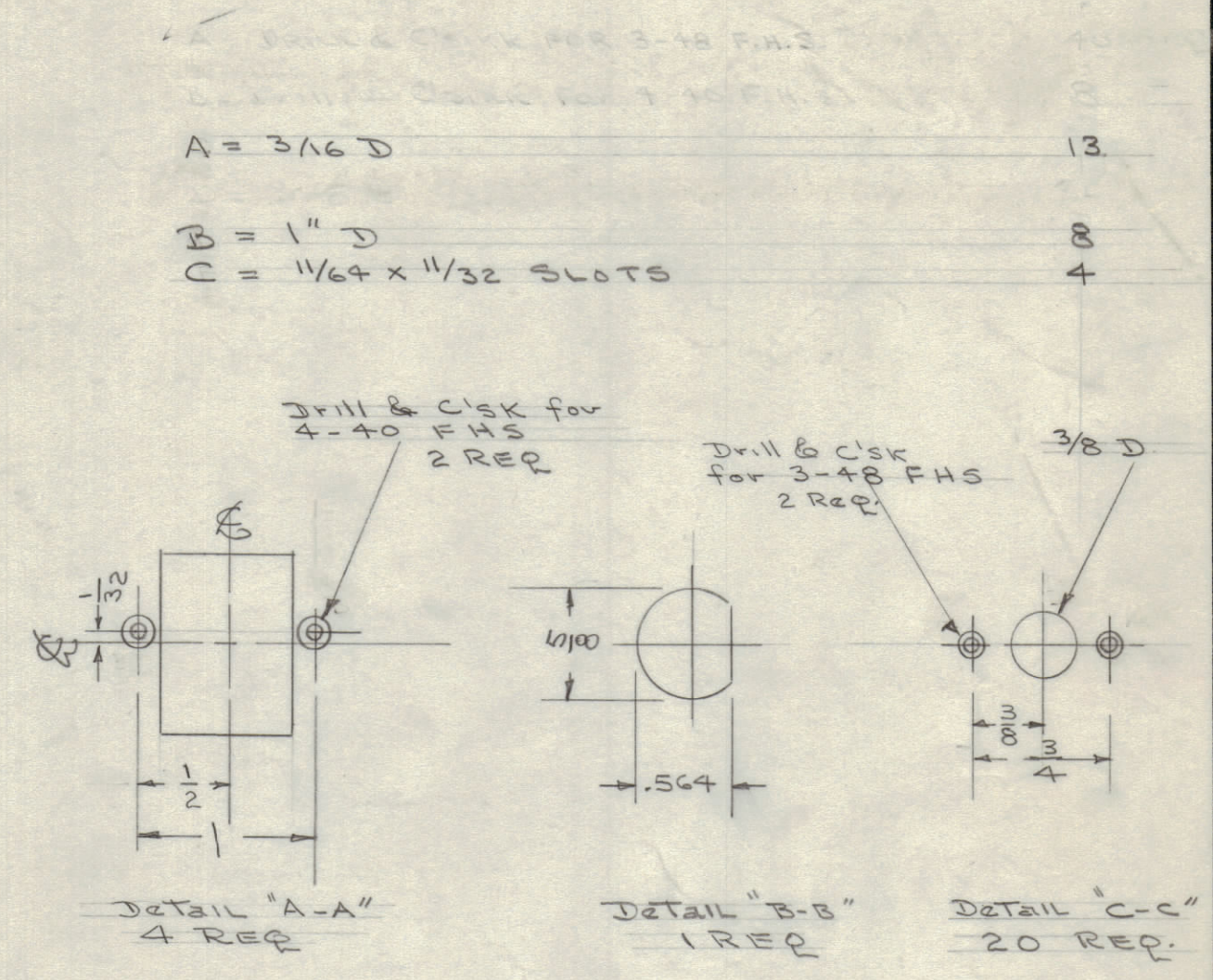
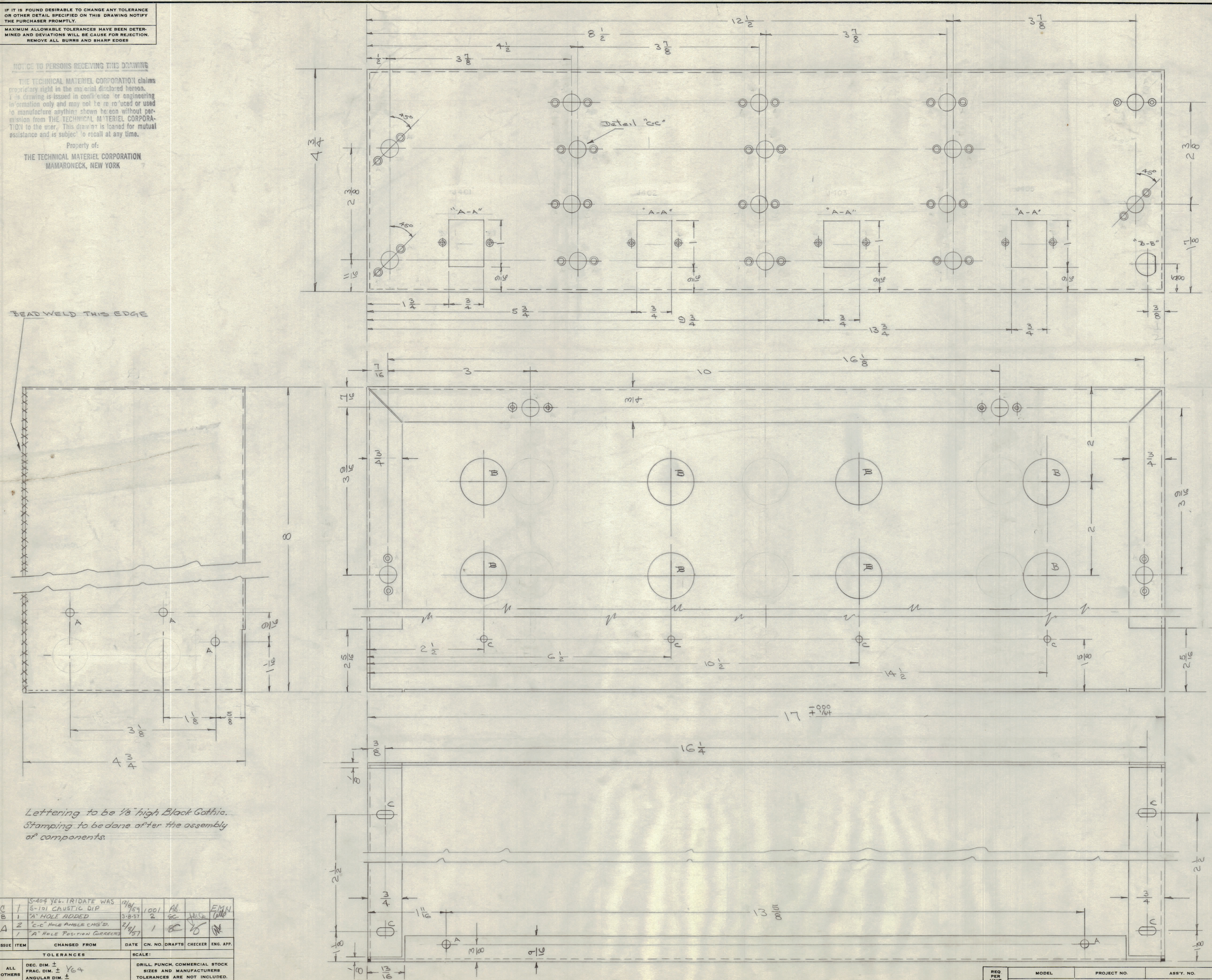


IF IT IS FOUND DESIRABLE TO CHANGE ANY TOLERANCE OR OTHER DETAIL SPECIFIED ON THIS DRAWING NOTIFY THE PURCHASER PROMPTLY.
 MAXIMUM ALLOWABLE TOLERANCES HAVE BEEN DETERMINED AND DEVIATIONS WILL BE CAUSE FOR REJECTION.
 REMOVE ALL BURRS AND SHARP EDGES

NOTICE TO PERSONS RECEIVING THIS DRAWING

THE TECHNICAL MATERIEL CORPORATION claims proprietary right in the material disclosed hereon. If a drawing is issued in confidence or engineering information only and may not be re-used or used to manufacture anything shown hereon without permission from THE TECHNICAL MATERIEL CORPORATION to the user. This drawing is loaned for mutual assistance and is subject to recall at any time.

Property of:
 THE TECHNICAL MATERIEL CORPORATION
 MAMARONECK, NEW YORK



NOTE: GRIND ALL WELDED SEAMS SMOOTH.

Lettering to be 1/8" high Black Gothic.
 Stamping to be done after the assembly of components.

REV	DESCRIPTION	DATE	CH. NO.	DRAFTS	CHECKER	ENG. APP.
C	S-404 YEL. IRIDITE WAS	12/16/57	1001	AK	AK	EMM
B	S-101 CAUSTIC DIP	3-8-57	2	SC	AK	EMM
A	"A" HOLE ADDED	2/14/57	1	SC	AK	EMM
1	"C-C" HOLE ANGLE CHG'D					
1	"A" HOLE POSITION CORRECTED					

ALL	DEC. DIM. ±	DRILL PUNCH, COMMERCIAL STOCK
OTHERS	FRACTIONAL DIM. ±	SIZES AND MANUFACTURERS
	ANGULAR DIM. ±	TOLERANCES ARE NOT INCLUDED.

REQ. PER UNIT	MODEL	PROJECT NO.	ASBY. NO.	DATE

REQ. ITEM	PART NO.	DESCRIPTION	SYMBOL
	.064	THE TECHNICAL MATERIEL CORP. MAMARONECK, NEW YORK	
		ALUMINUM	
		5052-H32	
		CHASSIS WRAP AROUND	
		MODEL STST, TSR	
		TYPE & TEMPER	
		HEAT TREAT. SPEC.	
		CHECKED	
		FINAL APPROVAL	
		S-404 YEL. IRIDITE	
		FINISH & SPEC. NO.	
			MS-1018 C