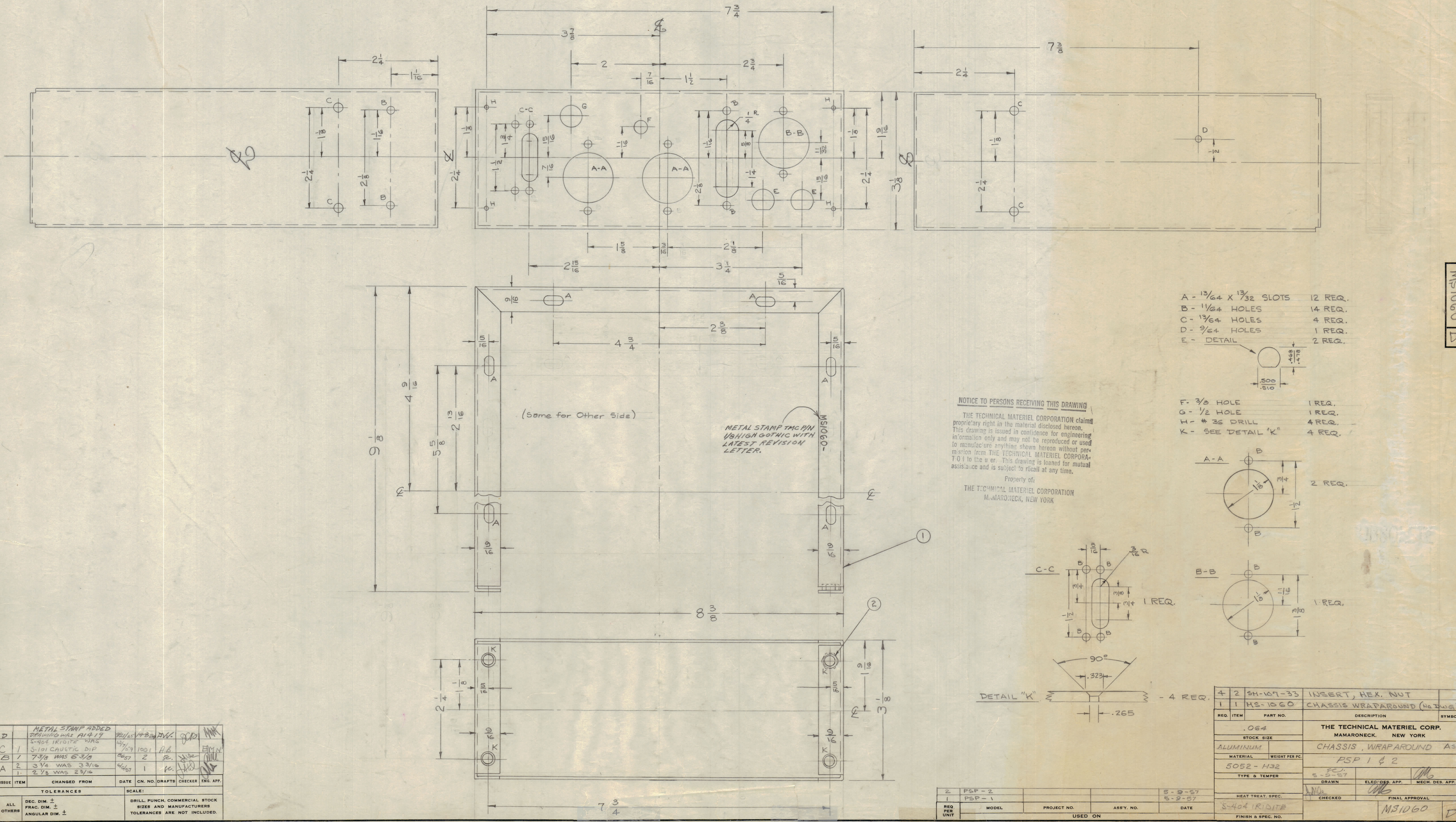
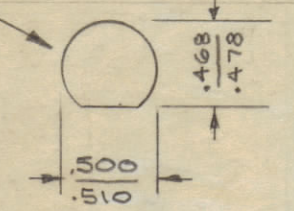


IF IT IS FOUND DESIRABLE TO CHANGE ANY TOLERANCE OR OTHER DETAIL SPECIFIED ON THIS DRAWING NOTIFY THE PURCHASER PROMPTLY.  
 MAXIMUM ALLOWABLE TOLERANCES HAVE BEEN DETERMINED AND DEVIATIONS WILL BE CAUSE FOR REJECTION. REMOVE ALL BURRS AND SHARP EDGES

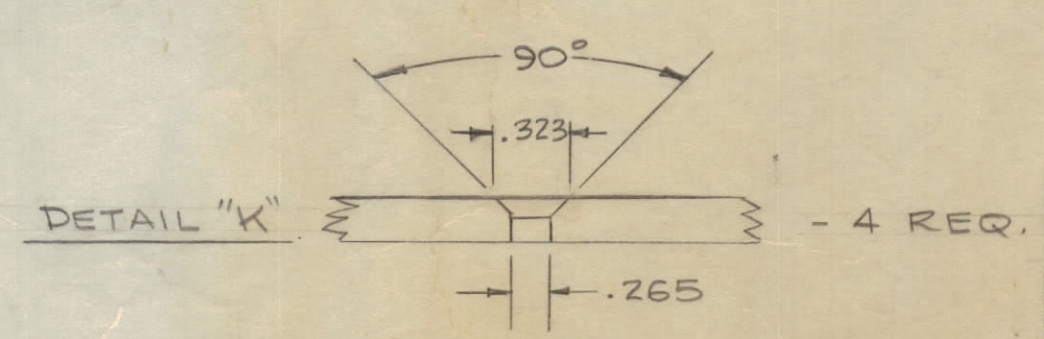
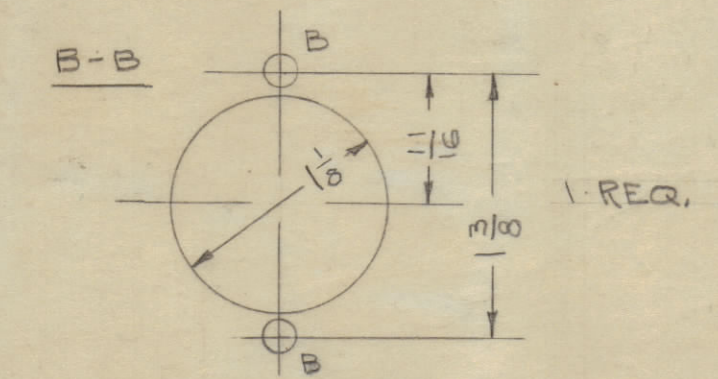
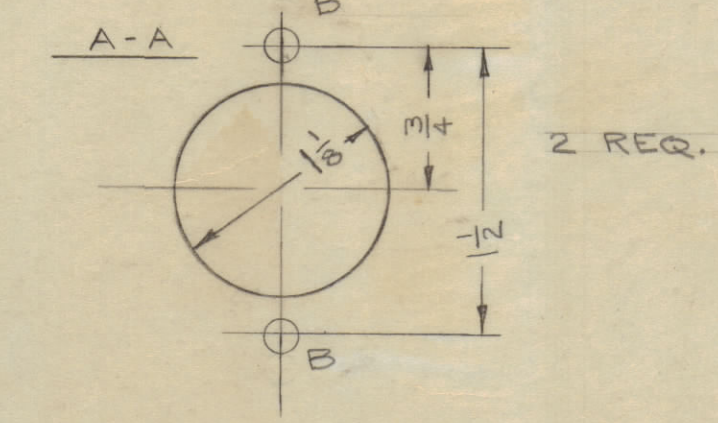
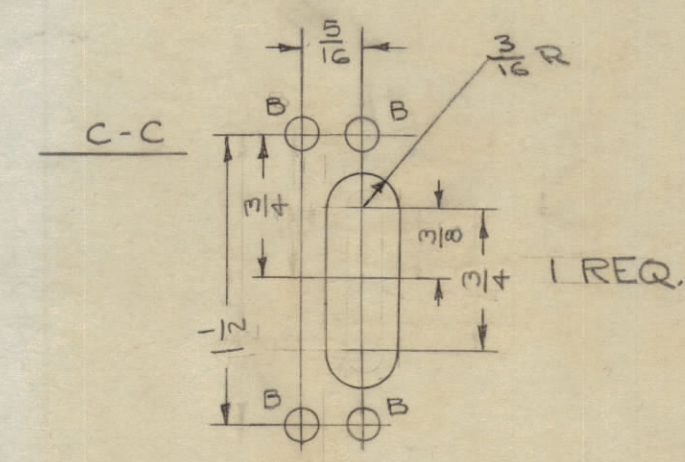


- A - 13/64 X 1/32 SLOTS 12 REQ.
- B - 1/64 HOLES 14 REQ.
- C - 13/64 HOLES 4 REQ.
- D - 9/64 HOLES 1 REQ.
- E - DETAIL 2 REQ.



- F - 3/8 HOLE 1 REQ.
- G - 1/2 HOLE 1 REQ.
- H - # 36 DRILL 4 REQ.
- K - SEE DETAIL "K" 4 REQ.

**NOTICE TO PERSONS RECEIVING THIS DRAWING**  
 THE TECHNICAL MATERIEL CORPORATION claims proprietary right in the material disclosed herein. This drawing is issued in confidence for engineering information only and may not be reproduced or used to manufacture anything shown herein without permission from THE TECHNICAL MATERIEL CORPORATION to the user. This drawing is loaned for mutual assistance and is subject to recall at any time.  
 Property of:  
 THE TECHNICAL MATERIEL CORPORATION  
 M. MARONECK, NEW YORK



ISSUE	ITEM	CHANGED FROM	DATE	CN. NO.	DRAFTS	CHECKER	ENG. APP.
D		METAL STAMP ADDED DRAWING WAS A1419	2/1/57	148	JWV	JCP	
C	1	S-404 TRITITE WAS S-101 CAUSTIC DIP	12/1/57	1001	AB	EMM	
B	1	7/8 WAS 63/8	8/27	2	SE	JCP	
A	2	3/4 WAS 33/16	6/27	1	IC	JCP	
	1	2/8 WAS 23/16					

REQ. PER UNIT	MODEL	PROJECT NO.	ASS'Y. NO.	DATE
2	PSP-2			5-9-57
1	PSP-1			5-9-57

REQ. ITEM	PART NO.	DESCRIPTION	SYMBOL
4	2 SH-107-33	INSERT, HEX. NUT	
1	MS-1060	CHASSIS WRAPAROUND (No Draw)	

THE TECHNICAL MATERIEL CORP.  
 MAMARONECK, NEW YORK  
 CHASSIS WRAPAROUND Ass'y  
 PSP 1 & 2

HEAT TREAT. SPEC.	CHECKED	FINAL APPROVAL
S-404 TRITITE		MS1060 D