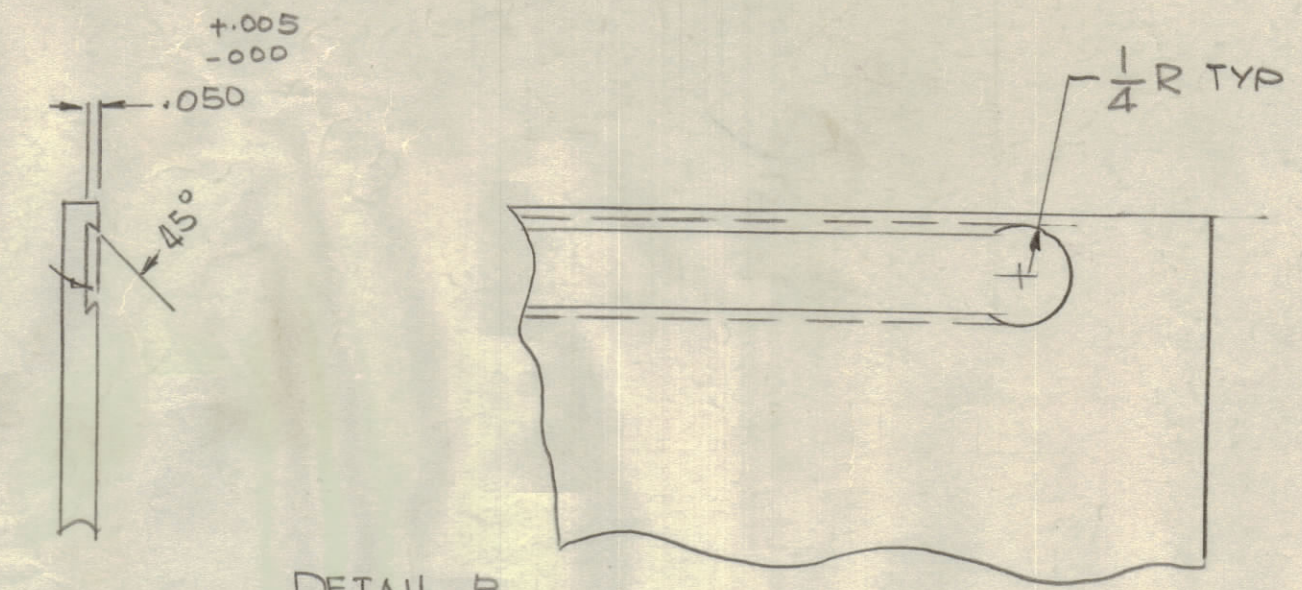
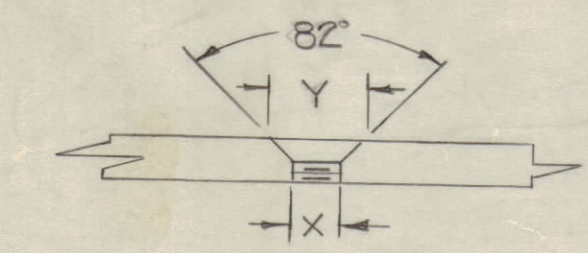


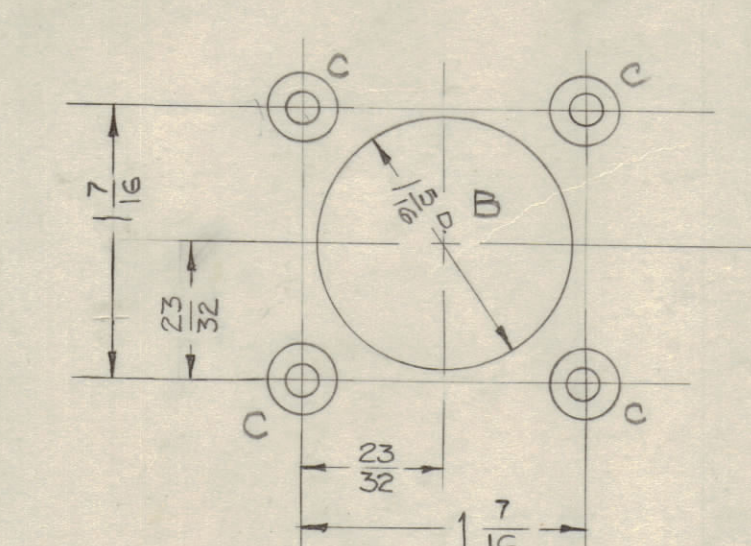
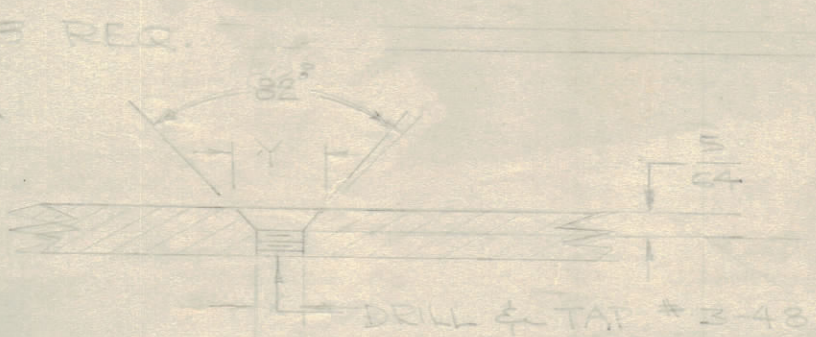
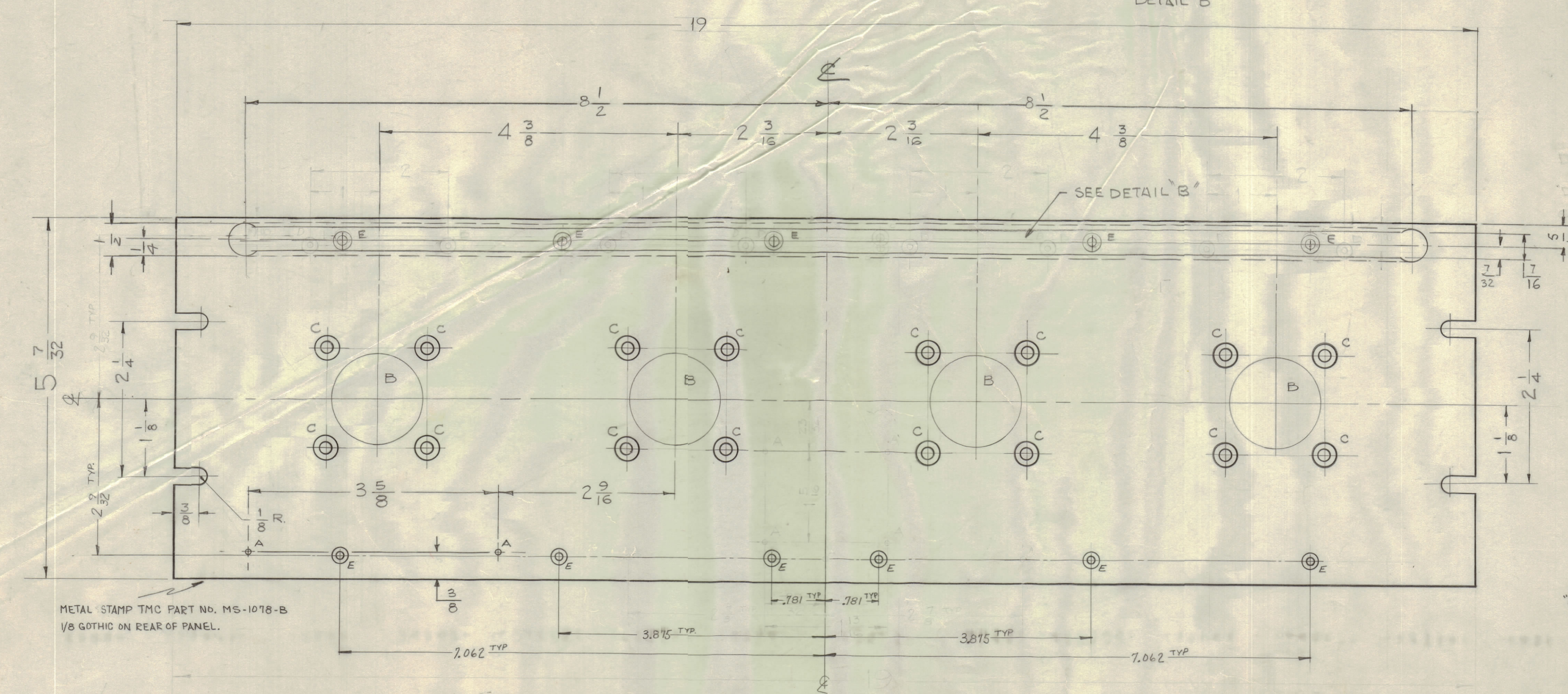
IF IT IS FOUND DESIRABLE TO CHANGE ANY TOLERANCE OR OTHER DETAIL SPECIFIED ON THIS DRAWING NOTIFY THE PURCHASER PROMPTLY.
 MAXIMUM ALLOWABLE TOLERANCES HAVE BEEN DETERMINED AND DEVIATIONS WILL BE CAUSE FOR REJECTION. REMOVE ALL BURRS AND SHARP EDGES



"A" - #47 (.078) DIA. 2 REQ.
 "B" - SEE DETAIL A-A 4-REQ.
 "C" - DRILL & C'SINK FOR #10 FHS - 16 REQ. - SEE CHART A

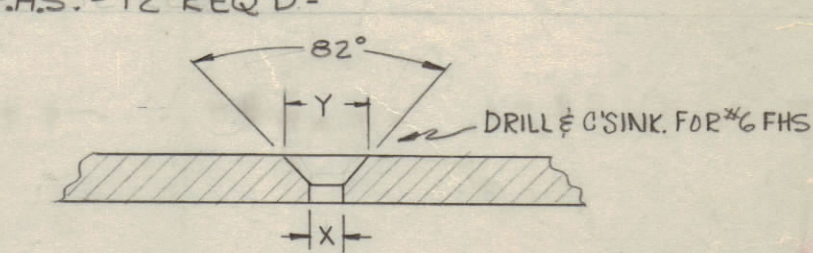


DIM	#10 FHS.	#10 FHS.
X	#9 (.136)	#9 (.136)
Y	.390	.390



"E" - DRILL & C'SINK FOR #6 FHS. - 12 REQ'D -

DIM.	#6-32 F.H.S.
X	.144
Y	.284



FRONT & EDGES ONLY

NOTE - FINISH
 S-404 YEL. IRIDITE
 S-114 ZINC CHROMATE PRIMER
 S-115 SMOOTH GRAY ENAMEL
 OR PRIME & PAINT TO CUSTOMERS SPECIFICATION.

NOTICE TO PERSONS RECEIVING THIS DRAWING

THE TECHNICAL MATERIEL CORPORATION claims proprietary right in the material disclosed hereon. This drawing is issued in confidence for engineering information only and may not be reproduced or used to manufacture anything shown hereon without permission from THE TECHNICAL MATERIEL CORPORATION to the user. This drawing is loaned for mutual assistance and is subject to recall at any time.

Property of:
 THE TECHNICAL MATERIEL CORPORATION
 MAMARONECK, NEW YORK

D	8" DIA. HOLES FOR 3/16" DIA. DRILL	4-3-36	22051	GDL	
C	5" RELOC 2 "A" HOLES, DELETE 1	7-3-72	21663		
B	4" CHANGED 1X4, 2X4 TO PROPER ANGLE	10-9-62	1383		
A	1" S-404 YEL. IRIDITE WAS S-101 CAUSTIC DIP	12/15/59	1001	AB	EMN

CHART A

QDP-2C2X4	MS-1078-1	AS SHOWN
QDP-2C1X4	MS-1078-2	C'SK "C" HOLES REPLACED BY 1/8" DIA D. CLEARANCE HOLES

ALL OTHERS	DEC. DIM. ± 1/64 FRAC. DIM. ± 1/64 ANGULAR DIM. ±	DRILL, PUNCH, COMMERCIAL STOCK SIZES AND MANUFACTURERS TOLERANCES ARE NOT INCLUDED.
------------	---	---

REQ. PER UNIT	MODEL	PROJECT NO.	ASS'Y. NO.	DATE
1	QDP-2C2X4			
1	QDP-2C1X4			

REQ. ITEM	PART NO.	DESCRIPTION	SYMBOL
3/16 THK.		THE TECHNICAL MATERIEL CORP. MAMARONECK, NEW YORK	
ALUMINUM		FRONT PANEL, MACHINING	
MATERIAL	WEIGHT PER PC.		
2024-T3			
TYPE & TEMPER			
HEAT TREAT. SPEC.			
FINISH & SPEC. NO.			