

11 10 9 8 7 6 5 4 3 2 1

G

F

E

D

C

B

A

G

F

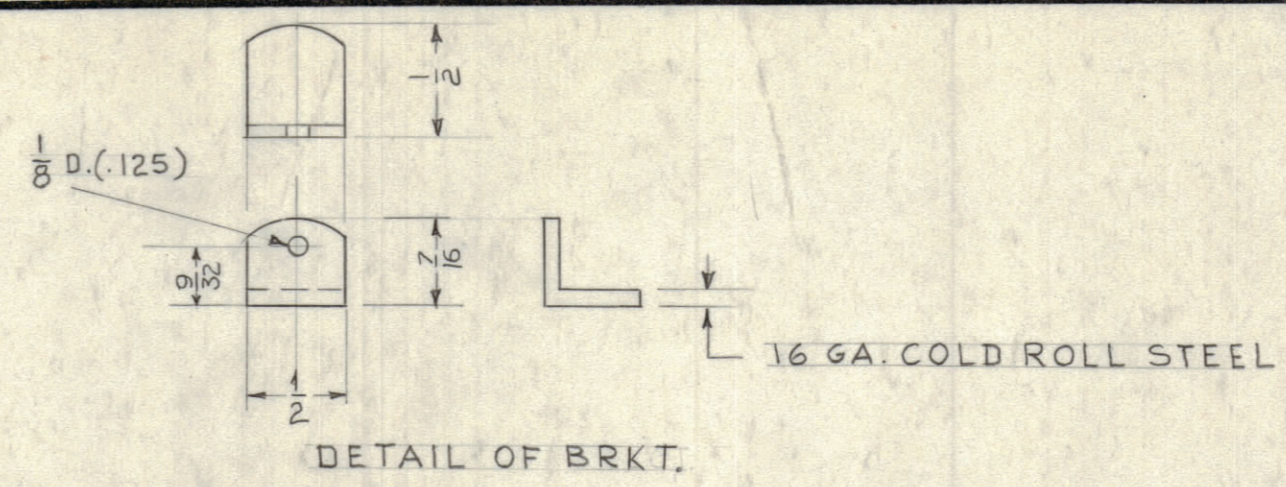
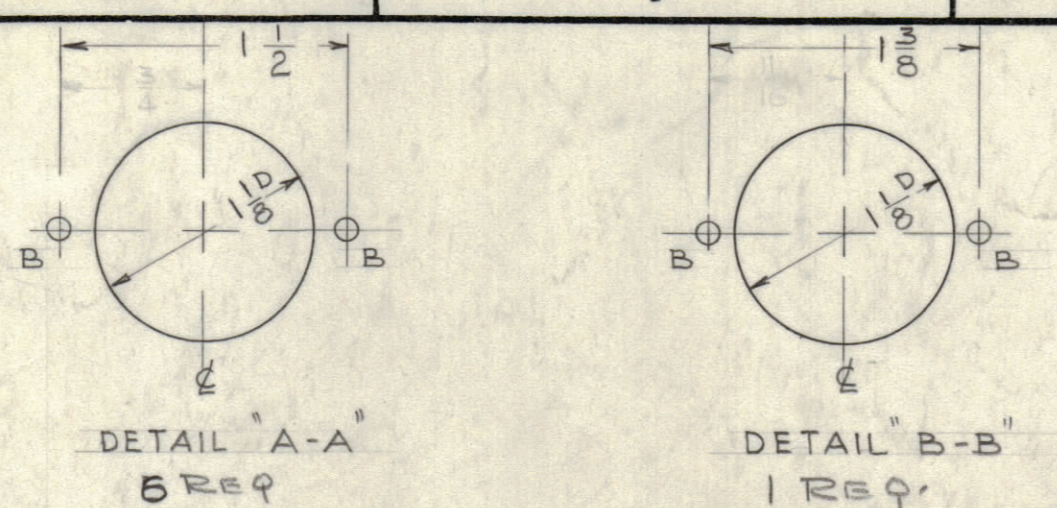
E

D

C

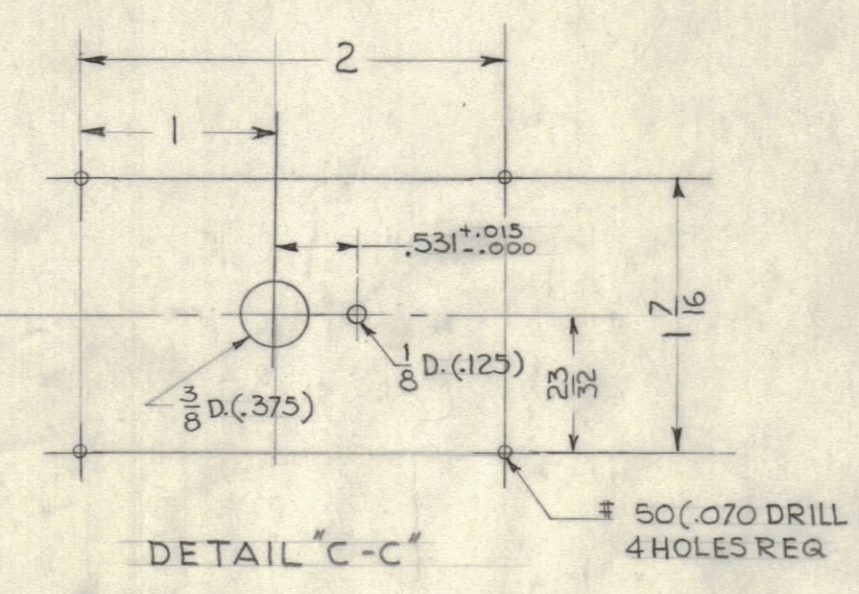
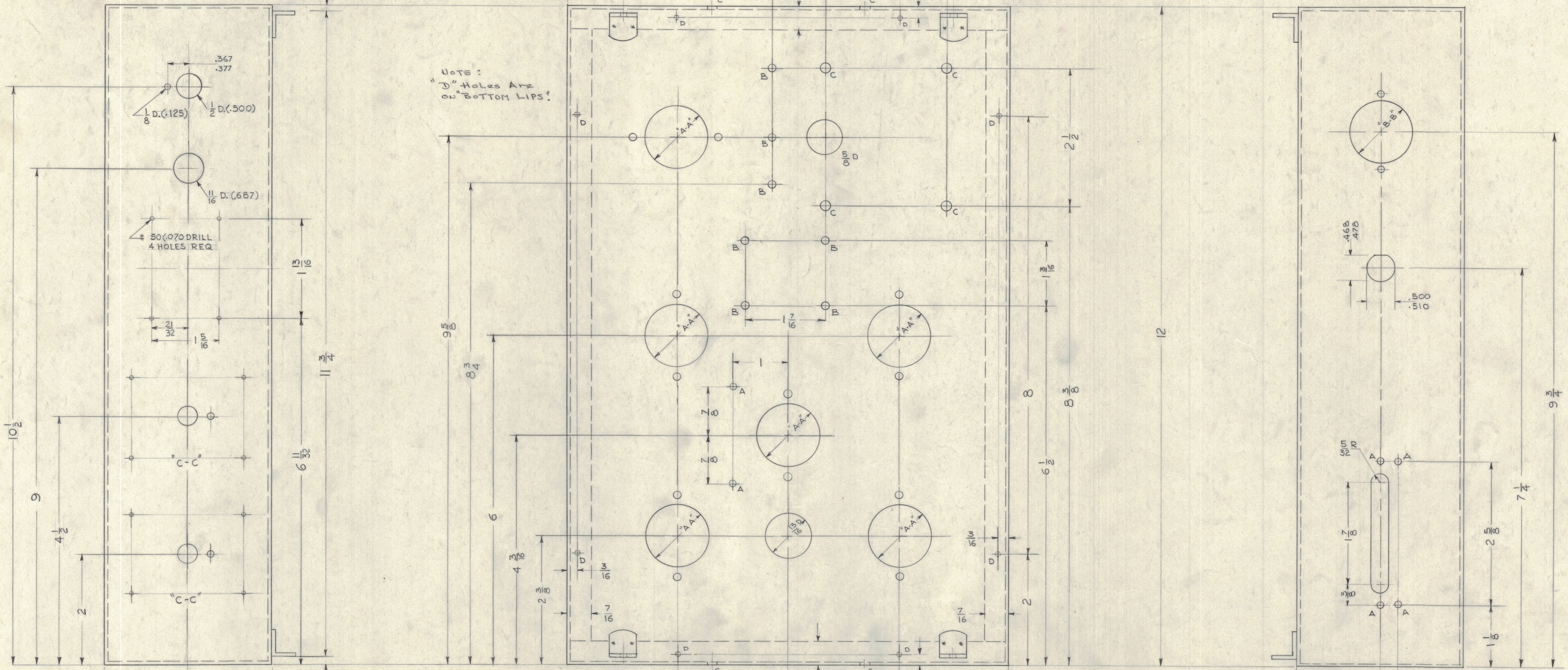
B

A



NOTICE TO PERSONS RECEIVING THIS DRAWING  
THE TECHNICAL MATERIEL CORPORATION claims proprietary right in the material disclosed herein. This drawing is issued in confidence for engineering information only and may not be reproduced or used to manufacture anything shown hereon without permission from THE TECHNICAL MATERIEL CORPORATION to the user. This drawing is loaned for mutual assistance and is subject to recall at any time.  
Property of:  
THE TECHNICAL MATERIEL CORPORATION  
MAMARONECK, NEW YORK

NOTE:  
"D" Holes Are on "BOTTOM LIPS!"



- HOLE DIAMETERS
- A = 9/64 D. (.140) 6 HOLES
  - B = 1/16 D. (.171) 17 HOLES
  - C = 3/16 D. (.187) 4 HOLES
  - D = 7/64 D. (.110) 8 HOLES (BOTTOM LIPS)

NOTE: GRAY WRINKLE FINISH TO BE SAME SHADE AS ICA CHASSIS #3792 COVER

REF: ICA CHASSIS # 3792 UNMODIFIED

ISSUE	NO.	DESCRIPTION	DATE	CH. NO.	DRAFTS	CHECKER	ENG. APP.
1		REDRAWN - NO REVISION	11/3/50				
TOLERANCES			SCALE: FULL				
DEC. DIM. ± FRACTIONAL DIM. ± ANGULAR DIM. ± V64							
MAXIMUM ALLOWABLE TOLERANCES HAVE BEEN DETERMINED AND ANY DEVIATIONS WILL BE CAUSE FOR REJECTION. REMOVE ALL BURRS AND SHARP EDGES							

REQ. PER UNIT	MODEL	SECTION	ABBY. NO.	DATE
1	VTG		A-124	7-23-52
USED ON				

REQ. ITEM	PART NO.	DESCRIPTION	SYMBOL
17 Ga.		THE TECHNICAL MATERIEL CORP. MAMARONECK, NEW YORK	
STEEL		CHASSIS, MAIN	
MATERIAL			
COLD ROLLED			
TYPE & TEMPER			
HEAT TREAT. SPEC.			
GRAY WRINKLE FINISH			
FINISH & SPEC. NO.			
DRAWN		ELEC. DES. APP.	MECH. DES. APP.
CHECKED		FINAL APPROVAL	
MS-110			

MS-110

11 10 9 8 7 6 5 4 3 2 1