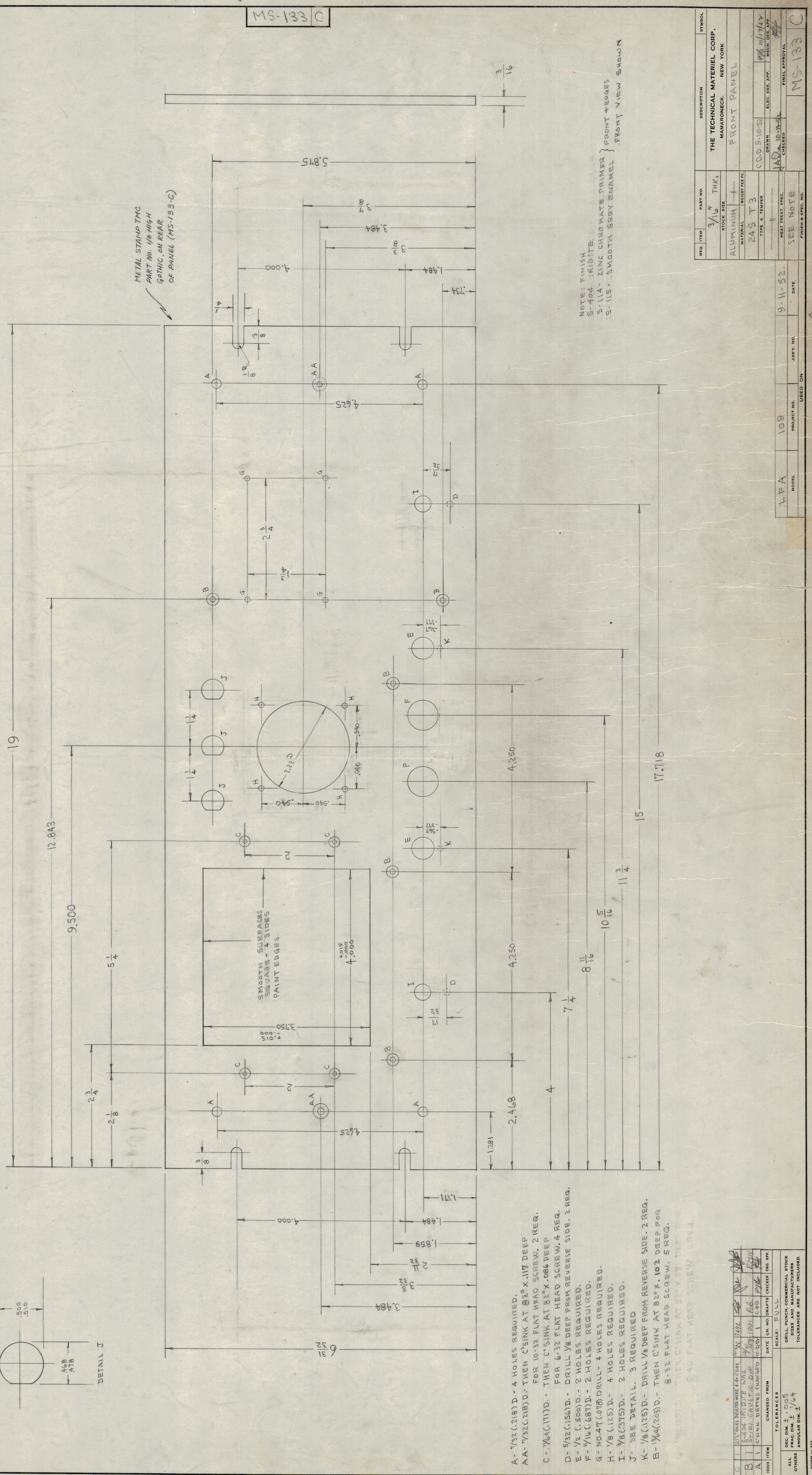
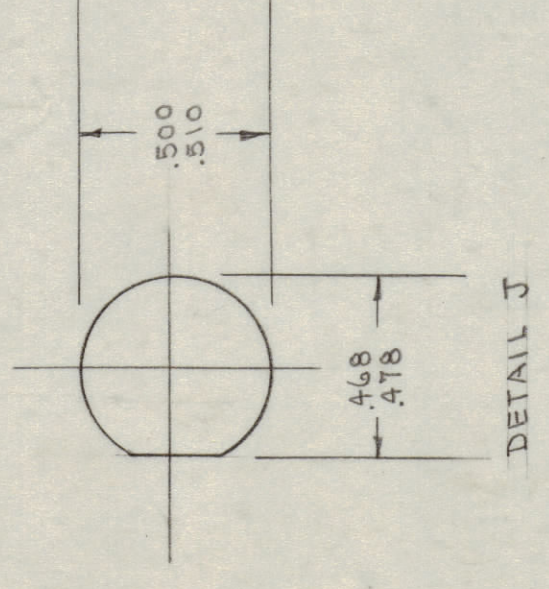


IF IT IS FOUND DESIRABLE TO CHANGE ANY TOLERANCE OR DIMENSION SHOWN ON THIS DRAWING NOTIFY THE PURCHASER PROMPTLY. MAXIMUM ALLOWABLE TOLERANCES HAVE BEEN DETERMINED AND DEVIATIONS WILL BE CAUSE FOR REJECTION. REMOVE ALL BURRS AND SHARP EDGES.

RELEASED



MS-133 C

NOTICE TO PURCHASERS RECEIVING THIS DRAWING
 THE TECHNICAL MATERIEL CORPORATION claims
 proprietary right in the material disclosed herein.
 This drawing is issued in confidence for engineering
 purposes only and is not to be reproduced or used
 in any way without the written consent of the
 TECHNICAL MATERIEL CORPORATION. THE TECHNICAL MATERIEL CORPORATION
 MAKES NO WARRANTY OF MERCHANTABILITY OR FITNESS
 TO THE USER. THIS DRAWING IS LOANED FOR MUTUAL
 ASSISTANCE AND IS SUBJECT TO RECALL AT ANY TIME.

Property of:
 THE TECHNICAL MATERIEL CORPORATION
 MAMARONECK, NEW YORK

NOTE: FINISH
 S-404 IRIDITE
 S-114-ZINC CHROMATE PRIMER } FRONT EDGES
 S-115-SMOOTH GREY ENAMEL } FRONT VIEW SHOWN

- A - 1/32(.218)D.- 4 HOLES REQUIRED.
- AA - 1/32(.218)D.- THEN C'SINK AT 82°X.117 DEEP FOR 10-32 FLAT HEAD SCREW, 2 REQ.
- C - 1/8(.125)D.- THEN C'SINK AT 82°X.086 DEEP FOR 6-32 FLAT HEAD SCREW, 4 REQ.
- D - 5/32(.156)D.- DRILL 1/8 DEEP FROM REVERSE SIDE, 2 REQ.
- E - 1/2(.500)D.- 2 HOLES REQUIRED.
- F - 1/16(.062)D.- 2 HOLES REQUIRED.
- G - NO.47(.078)DRILL- 4 HOLES REQUIRED.
- H - 1/8(.125)D.- 4 HOLES REQUIRED.
- I - 3/8(.375)D.- 2 HOLES REQUIRED.
- J - SEE DETAIL. 3 REQUIRED
- K - 1/8(.125)D.- DRILL 1/8 DEEP FROM REVERSE SIDE, 2 REQ.
- B - 1/64(.203)D.- THEN C'SINK AT 82°X.102 DEEP FOR 8-32 FLAT HEAD SCREW, 5 REQ.
- L - 1/8(.125)D.- THEN C'SINK AT 82°X.071 DEEP FOR 8-40 FLAT HEAD SCREW, 2 REQ.

REQ. ITEM	PART NO.	DESCRIPTION	SYMBOL
	3/16" THK.	ALUMINUM	
	STOCK SIZE	FRONT PANEL	
	MATERIAL	FRONT PANEL	
	WEIGHT PER FT ²		
	TYPE & TEMPER		
	HEAT TREAT. SPEC.		
	FINISH & SPEC. NO.		

MODEL	PROJECT NO.	ASSTY. NO.	DATE
LFA	109		9-11-52.

ISSUE ITEM	CHANGED FROM	DATE	EN. NO.	DRAFTS	CHECKER	ENG. APP.
C	1	10/15/52	1492			
B	1	10/15/52	1492			
A	1	10/15/52	1492			