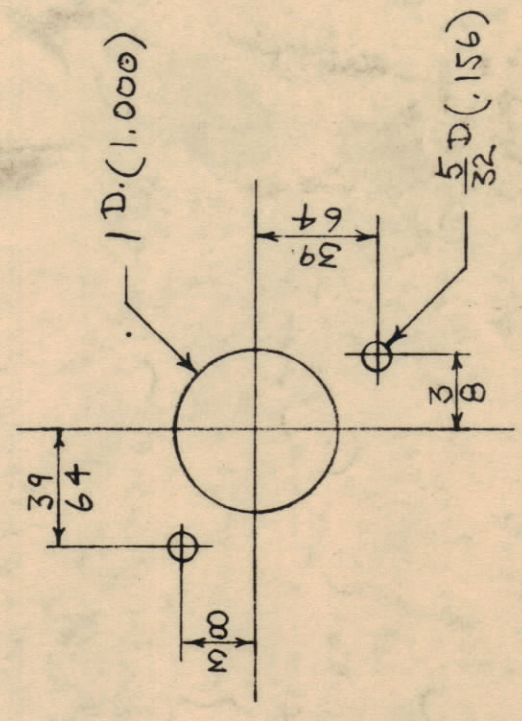
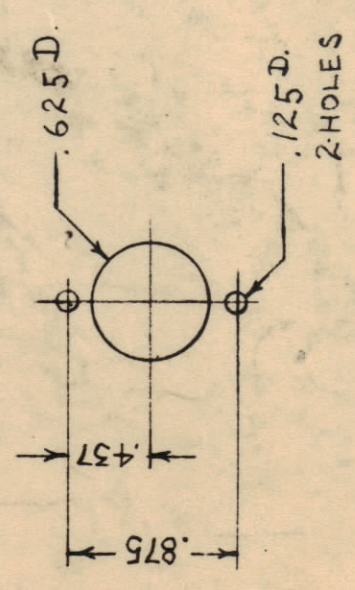


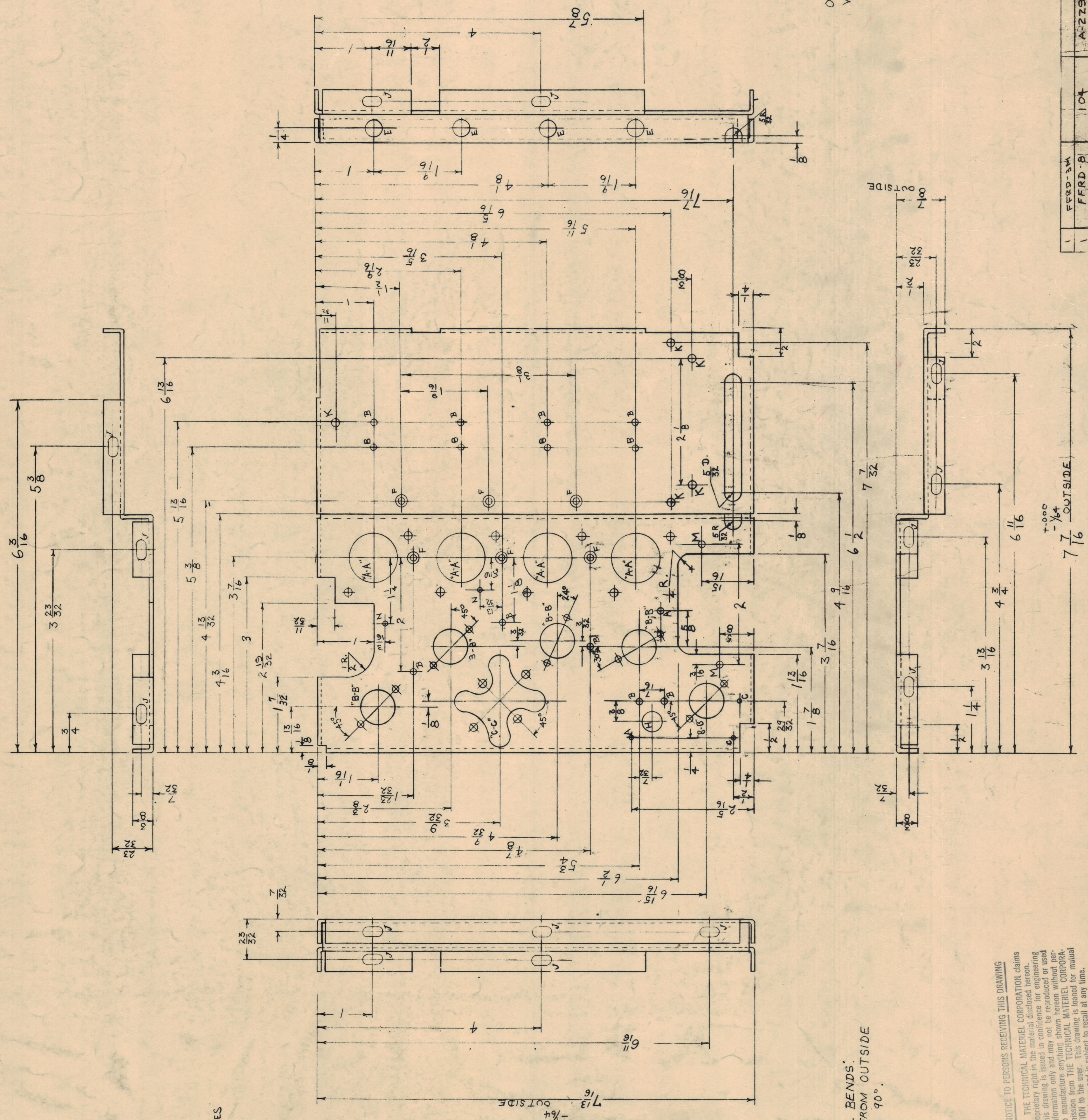
IF IT IS FOUND DESIRABLE TO CHANGE ANY TOLERANCE OR DIMENSION ON THIS DRAWING NOTIFY THE PURCHASER PROMPTLY.
 MAXIMUM ALLOWABLE TOLERANCES HAVE BEEN DETERMINED AND DEVIATIONS WILL BE CAUSE FOR REJECTION.
 REMOVE ALL BURRS AND SHARP EDGES



DETAIL OF "A-A" - 4 REQ.



DETAIL OF "B-B" - 5 REQ.



DETAIL OF "C-C" - 1 REQ.

SYM	HOLE SIZE	REQ
A	7/8 D. (.125)	2
B	7/16 D. (.140)	12
C	5/16 D. (.093)	2
D	DELETED	4
E	5/16 D. (.312)	4
F	DRILL & CT'K FOR #4 FLAT HD. SR.	6
H	7/16 D. (.437)	1
J	5/32 x 5/16 SLOT	12
K	3/16 D. (.187)	5
M	#A3 (.089) DRILL	2
N	3/32 (.093) DIA.	2

- NOTE -
 OUTSIDE DIMENSIONS ARE TO BE HELD WITHIN TOLERANCES SPECIFIED.

NOTE:
 1/16" INSIDE RADIUS ON ALL BENDS.
 ALL DIMENSIONS TAKEN FROM OUTSIDE OF BENDS. ALL BENDS 90°.

REV	DATE	BY	CHKD	APP	DESCRIPTION
K	12/16/52	WAS	1001	AS	S-404 IRIDITE WAS
J	11/16/52	WAS	1001	AS	S-404 IRIDITE WAS
H	11/16/52	WAS	1001	AS	S-404 IRIDITE WAS
G	11/16/52	WAS	1001	AS	S-404 IRIDITE WAS
F	11/16/52	WAS	1001	AS	S-404 IRIDITE WAS
E	11/16/52	WAS	1001	AS	S-404 IRIDITE WAS
D	11/16/52	WAS	1001	AS	S-404 IRIDITE WAS
C	11/16/52	WAS	1001	AS	S-404 IRIDITE WAS
B	11/16/52	WAS	1001	AS	S-404 IRIDITE WAS
A	11/16/52	WAS	1001	AS	S-404 IRIDITE WAS

REQ. ITEM	PART NO.	DESCRIPTION	SYMBOL
1	.064	THE TECHNICAL MATERIEL CORP. HAMARONCK, NEW YORK	
2	ALUMINUM	CENTER CHASSIS	
3	52S-H32	STOCK SIZE MATERIAL	
4	11-27-52	DATE	
5	11-27-52	DATE	
6	11-27-52	DATE	
7	11-27-52	DATE	
8	11-27-52	DATE	
9	11-27-52	DATE	
10	11-27-52	DATE	
11	11-27-52	DATE	
12	11-27-52	DATE	
13	11-27-52	DATE	
14	11-27-52	DATE	
15	11-27-52	DATE	
16	11-27-52	DATE	
17	11-27-52	DATE	
18	11-27-52	DATE	
19	11-27-52	DATE	
20	11-27-52	DATE	
21	11-27-52	DATE	
22	11-27-52	DATE	
23	11-27-52	DATE	
24	11-27-52	DATE	
25	11-27-52	DATE	
26	11-27-52	DATE	
27	11-27-52	DATE	
28	11-27-52	DATE	
29	11-27-52	DATE	
30	11-27-52	DATE	
31	11-27-52	DATE	
32	11-27-52	DATE	
33	11-27-52	DATE	
34	11-27-52	DATE	
35	11-27-52	DATE	
36	11-27-52	DATE	
37	11-27-52	DATE	
38	11-27-52	DATE	
39	11-27-52	DATE	
40	11-27-52	DATE	
41	11-27-52	DATE	
42	11-27-52	DATE	
43	11-27-52	DATE	
44	11-27-52	DATE	
45	11-27-52	DATE	
46	11-27-52	DATE	
47	11-27-52	DATE	
48	11-27-52	DATE	
49	11-27-52	DATE	
50	11-27-52	DATE	
51	11-27-52	DATE	
52	11-27-52	DATE	
53	11-27-52	DATE	
54	11-27-52	DATE	
55	11-27-52	DATE	
56	11-27-52	DATE	
57	11-27-52	DATE	
58	11-27-52	DATE	
59	11-27-52	DATE	
60	11-27-52	DATE	
61	11-27-52	DATE	
62	11-27-52	DATE	
63	11-27-52	DATE	
64	11-27-52	DATE	
65	11-27-52	DATE	
66	11-27-52	DATE	
67	11-27-52	DATE	
68	11-27-52	DATE	
69	11-27-52	DATE	
70	11-27-52	DATE	
71	11-27-52	DATE	
72	11-27-52	DATE	
73	11-27-52	DATE	
74	11-27-52	DATE	
75	11-27-52	DATE	
76	11-27-52	DATE	
77	11-27-52	DATE	
78	11-27-52	DATE	
79	11-27-52	DATE	
80	11-27-52	DATE	
81	11-27-52	DATE	
82	11-27-52	DATE	
83	11-27-52	DATE	
84	11-27-52	DATE	
85	11-27-52	DATE	
86	11-27-52	DATE	
87	11-27-52	DATE	
88	11-27-52	DATE	
89	11-27-52	DATE	
90	11-27-52	DATE	
91	11-27-52	DATE	
92	11-27-52	DATE	
93	11-27-52	DATE	
94	11-27-52	DATE	
95	11-27-52	DATE	
96	11-27-52	DATE	
97	11-27-52	DATE	
98	11-27-52	DATE	
99	11-27-52	DATE	
100	11-27-52	DATE	

NOTICE TO PERSONS RECEIVING THIS DRAWING
 THE TECHNICAL MATERIEL CORPORATION claims
 proprietary right in the material disclosed hereon
 and this drawing is issued in confidence for engineering
 information only and may not be reproduced without per-
 mission from THE TECHNICAL MATERIEL CORPORA-
 TION to the user. This drawing is loaned for mutual
 assistance and is subject to recall at any time.
 Property of:
 THE TECHNICAL MATERIEL CORPORATION
 HAMARONCK, NEW YORK

REV	DATE	BY	CHKD	APP	DESCRIPTION
K	12/16/52	WAS	1001	AS	S-404 IRIDITE WAS
J	11/16/52	WAS	1001	AS	S-404 IRIDITE WAS
H	11/16/52	WAS	1001	AS	S-404 IRIDITE WAS
G	11/16/52	WAS	1001	AS	S-404 IRIDITE WAS
F	11/16/52	WAS	1001	AS	S-404 IRIDITE WAS
E	11/16/52	WAS	1001	AS	S-404 IRIDITE WAS
D	11/16/52	WAS	1001	AS	S-404 IRIDITE WAS
C	11/16/52	WAS	1001	AS	S-404 IRIDITE WAS
B	11/16/52	WAS	1001	AS	S-404 IRIDITE WAS
A	11/16/52	WAS	1001	AS	S-404 IRIDITE WAS

ALL DIMENSIONS TAKEN FROM OUTSIDE OF BENDS. ALL BENDS 90°.

MS-164 K