

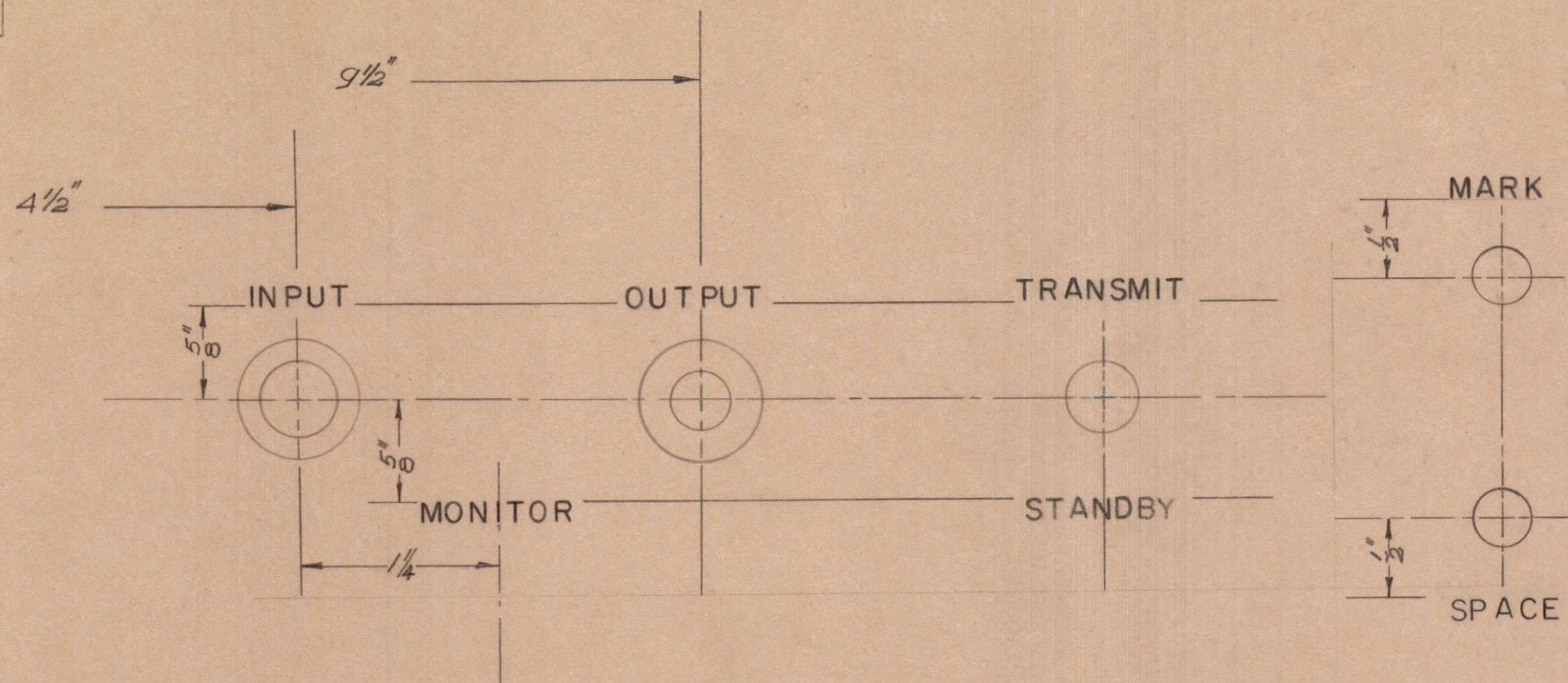
IF IT IS FOUND DESIRABLE TO CHANGE ANY TOLERANCE OR OTHER DETAIL SPECIFIED ON THIS DRAWING NOTIFY THE PURCHASER PROMPTLY.

MAXIMUM ALLOWABLE TOLERANCES HAVE BEEN DETERMINED AND DEVIATIONS WILL BE CAUSE FOR REJECTION. REMOVE ALL BURRS AND SHARP EDGES

NOTICE TO PERSONS RECEIVING THIS DRAWING

THE TECHNICAL MATERIEL CORPORATION claims proprietary right in the material disclosed hereon. This drawing is issued in confidence for engineering information only and may not be reproduced or used to manufacture anything shown hereon without permission from THE TECHNICAL MATERIEL CORPORATION to the user. This drawing is loaned for mutual assistance and is subject to recall at any time.

Property of:
THE TECHNICAL MATERIEL CORPORATION
MAMARONECK, NEW YORK



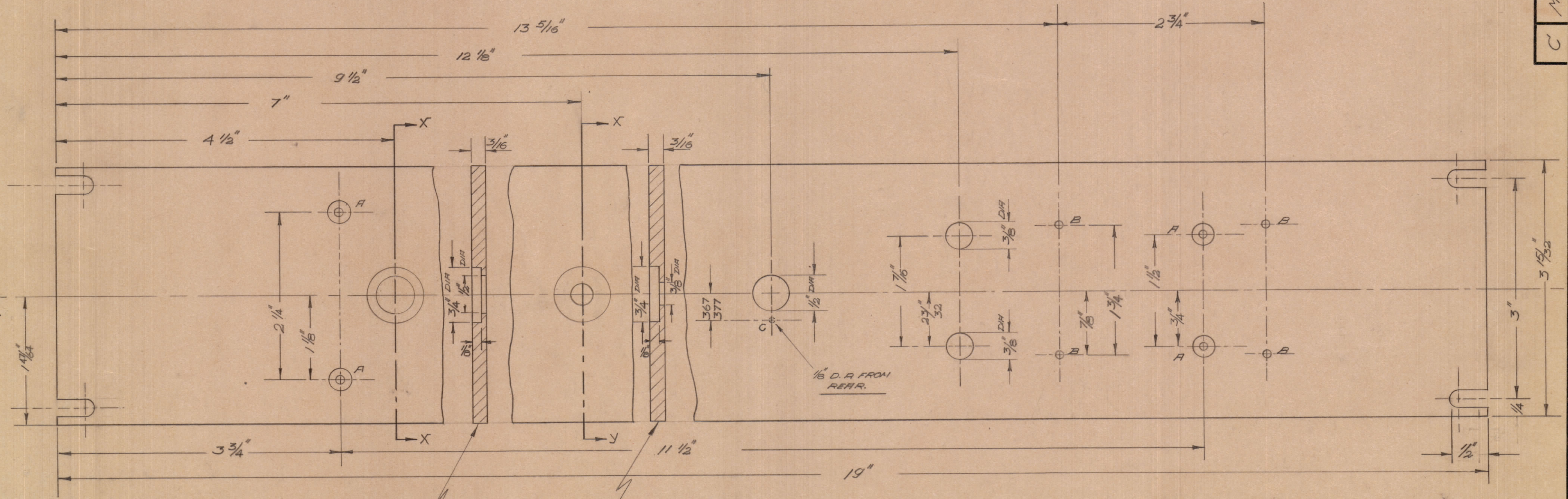
ALL LETTERING 1/8" HIGH
DEPTH OF STROKE .010
WIDTH " " .020

LEGEND.

- A - DRILL AND C.S. FOR 8/32 FLAT H. SCREW 4 REQ'D.
- B - " #47 (.076) 4 HOLES REQ'D.
- C - 1/8" (.125) X 1/8" DEEP OF REAR.

FRONT VIEW IS SHOWN.

Scale = 1:1



C MS-172

ISSUE	ITEM	CHANGED FROM	DATE	CN. NO.	DRAFTS	CHECKER	ENG. APP.
TOLERANCES		SCALE:					
ALL OTHERS		DRILL, PUNCH, COMMERCIAL STOCK SIZES AND MANUFACTURERS TOLERANCES ARE NOT INCLUDED.					

XFD-1	160	H 322	9.6.58
MODEL	PROJECT No.	ASS'Y. No.	DATE

REQ.	ITEM	PART No.	DESCRIPTION	SYMBOL
		3/16" THK	TMC (Canada) LIMITED	
		STOCK SIZE	OTTAWA ONTARIO	
		ALUMINUM.	FRONT PANEL	
		MATERIAL		
		24 S-T3		
		TYPE & TEMPER		
		HEAT TREAT. SPEC.		
		FINISH & SPEC. No.		