

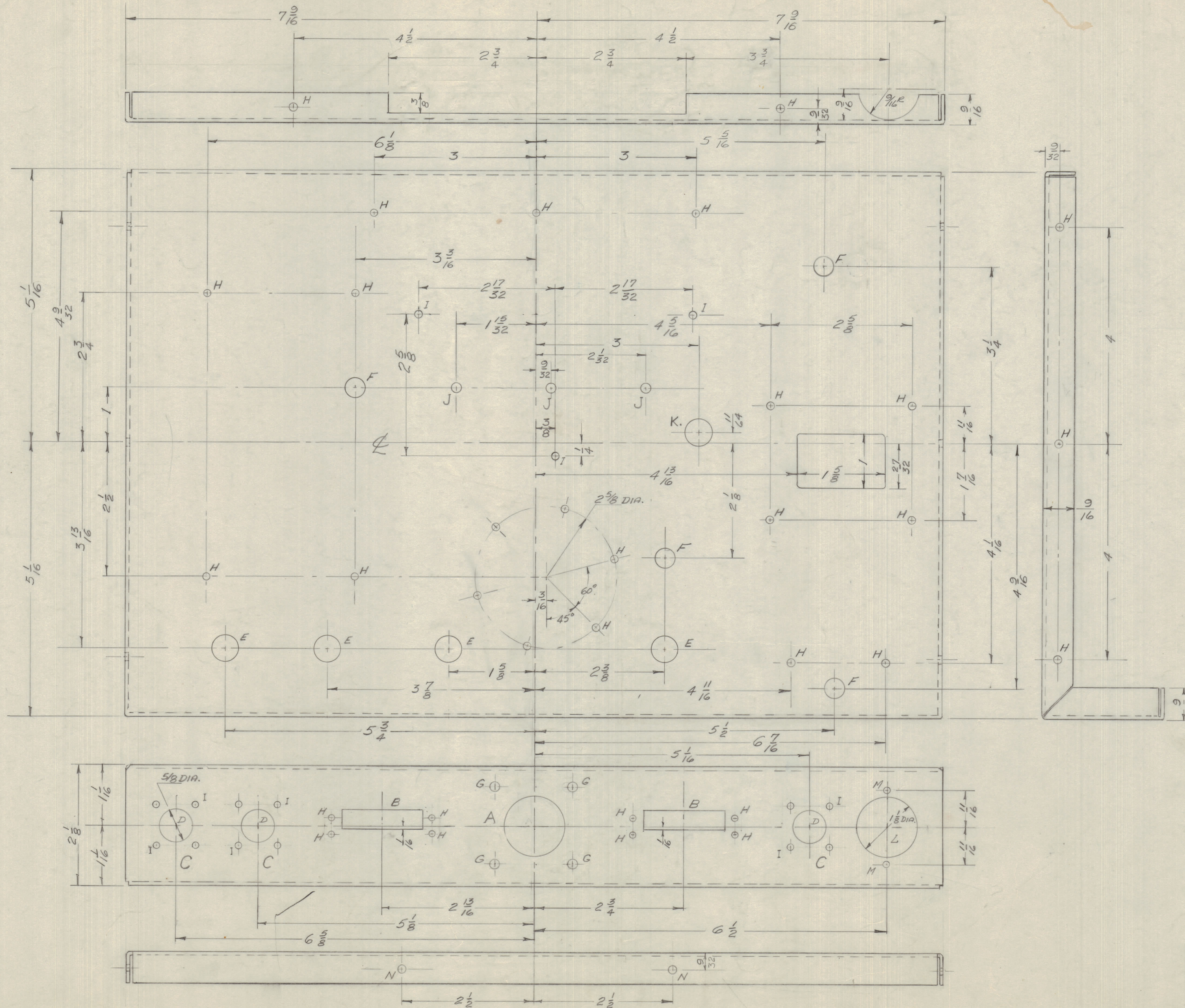
IF IT IS FOUND DESIRABLE TO CHANGE ANY TOLERANCE OR OTHER DETAIL SPECIFIED ON THIS DRAWING NOTIFY THE PURCHASER PROMPTLY.

MAXIMUM ALLOWABLE TOLERANCES HAVE BEEN DETERMINED AND DEVIATIONS WILL BE CAUSE FOR REJECTION. REMOVE ALL BURRS AND SHARP EDGES

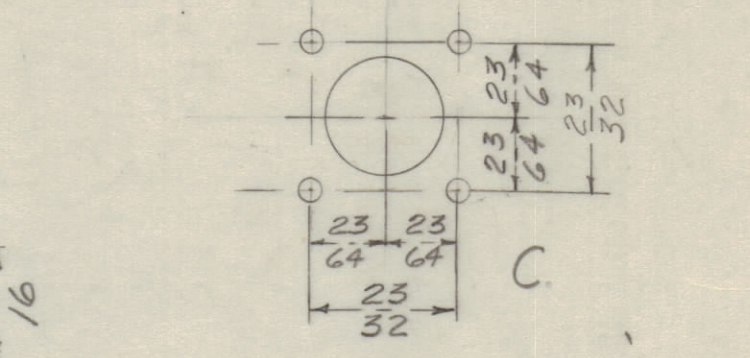
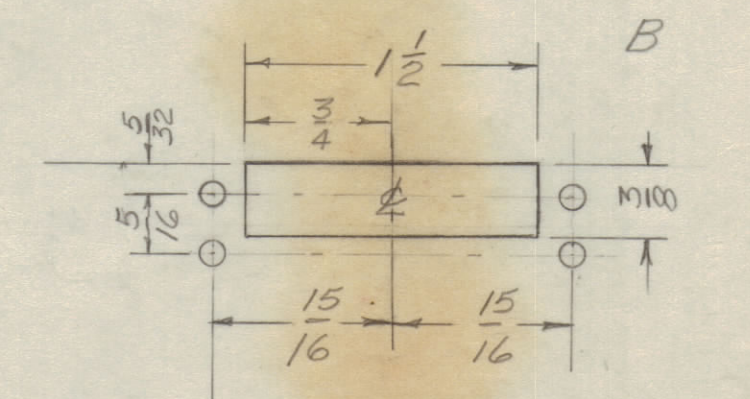
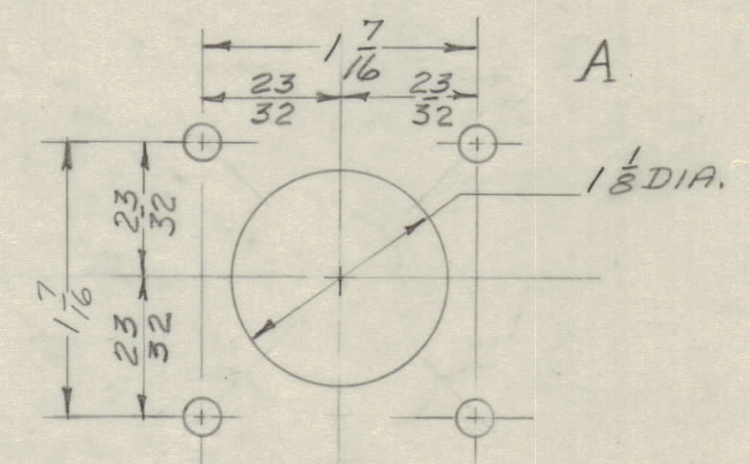
NOTICE TO PERSONS RECEIVING THIS DRAWING

THE TECHNICAL MATERIEL CORPORATION claims proprietary right in the material disclosed hereon. This drawing is issued in confidence for engineering information only and may not be reproduced or used to manufacture anything shown hereon without permission from THE TECHNICAL MATERIEL CORPORATION to the user. This drawing is loaned for mutual assistance and is subject to recall at any time.

Property of:
THE TECHNICAL MATERIEL CORPORATION
MAMARONECK, NEW YORK



- PUNCH SIZES**
- D - 3 HOLES 3/8 DIA.
 - E - 4 HOLES 13/32 DIA.
 - F - 4 HOLES 3/8 DIA.
 - G - 4 HOLES 13/64 DIA.
 - H - 35 HOLES 9/64 DIA.
 - I - 15 HOLES 1/8 DIA.
 - J - 3 HOLES 3/16 DIA.
 - K - 1 HOLE 1/2 DIA.
 - L - 1 HOLE 1/8 DIA.
 - M - 2 HOLES 9/64 DIA.
 - N - 2 HOLES 9/32 DIA.



MS-1016

ISSUE	ITEM	CHANGED FROM	DATE	CN. NO.	DRAFTS	CHECKER	ENG. APP.
TOLERANCES							
SCALE:							
ALL	DEC. DIM. ±	DRILL, PUNCH, COMMERCIAL STOCK					
OTHER	FRAC. DIM. ±	SIZES AND MANUFACTURERS					
	ANGULAR DIM. ±	TOLERANCES ARE NOT INCLUDED.					

MODEL PROJECT NO. A-10063 DATE 10/24/55

REQ. ITEM	PART NO.	DESCRIPTION	SYMBOL
0064 SHEET		TMC (Canada) LIMITED	
STOCK SIZE		OTTAWA ONTARIO	
0064 ALUMINUM		CHASSIS	
MATERIAL	WEIGHT PER PC.	TEMPER. R.F. SWITCHING UNIT	
57S 1/4 HARD		L. MARION	
TYPE & TEMPER.		DRAWN	
HEAT TREAT. SPEC.		ELEC. DES. APP.	
TMC 5101 & 5107		CHECKED	
FINISH & SPEC. NO.		MECH. DES. APP.	
		FINAL APPROVAL	
		1000	
		MS-10116	