

IF IT IS FOUND DESIRABLE TO CHANGE ANY TOLERANCE OR OTHER DETAIL SPECIFIED ON THIS DRAWING NOTIFY THE PURCHASER PROMPTLY.

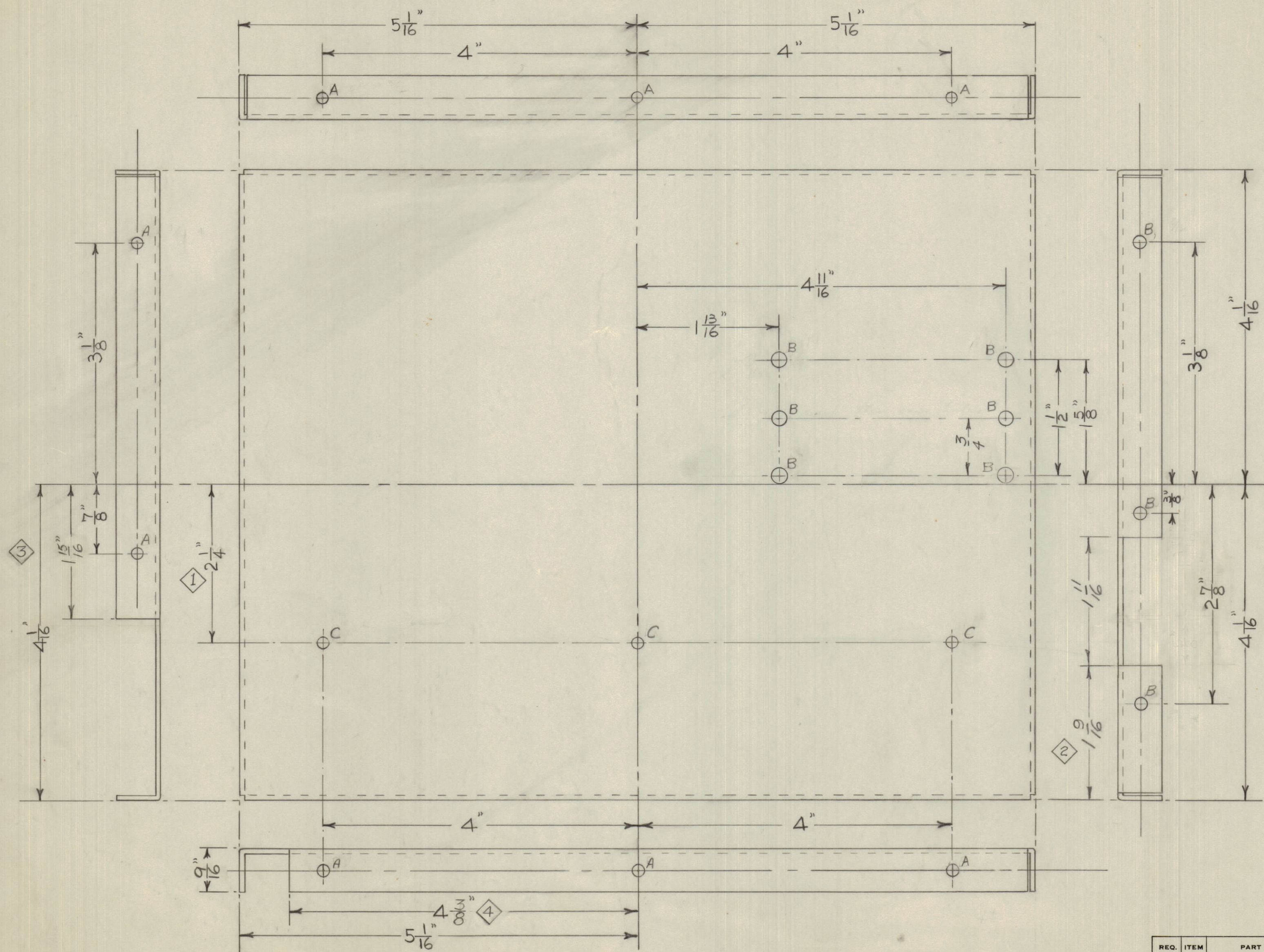
MAXIMUM ALLOWABLE TOLERANCES HAVE BEEN DETERMINED AND DEVIATIONS WILL BE CAUSE FOR REJECTION. REMOVE ALL BURRS AND SHARP EDGES

NOTICE TO PERSONS RECEIVING THIS DRAWING

THE TECHNICAL MATERIEL CORPORATION claims proprietary right in the material disclosed hereon. This drawing is issued in confidence for engineering information only and may not be reproduced or used to manufacture anything shown hereon without permission from THE TECHNICAL MATERIEL CORPORATION to the user. This drawing is loaned for mutual assistance and is subject to recall at any time.

Property of:
THE TECHNICAL MATERIEL CORPORATION
MAMARONECK, NEW YORK

- A 4 #18 DRILL HOLES
- B 14 #27 DRILL HOLES
- C 3 #1 PUNCH HOLES
- A 1/4 PUNCH 8 HOLES
- B 3/16 PUNCH 9 HOLES
- C 9/64 PUNCH 3 HOLES



MS-10121 A

A	5	B HOLES 3/16 PUNCH 9 HOLES WERE	17/2/56	L.M.	<i>Ward</i>		
	4	B HOLES 1/4 PUNCH 8 HOLES					
	3	4 3/8 WAS 4 1/16					
	2	1 3/16 WAS 1 3/4					
	1	1 3/16 WAS 1 1/16					
ISSUE		CHANGED FROM	DATE	CN. NO.	DRAFTS	CHECKER	ENG. APP.
TOLERANCES		SCALE: N.T.S.					
ALL OTHERS	DEC. DIM. ± FRAC. DIM. ± ANGULAR DIM. ±	DRILL, PUNCH, COMMERCIAL STOCK SIZES AND MANUFACTURERS TOLERANCES ARE NOT INCLUDED.					

REQ. ITEM	PART NO.	DESCRIPTION	SYMBOL
	0.064 SHEET	TMC (Canada) LIMITED	
	STOCK SIZE	OTTAWA ONTARIO	
	ALUMINUM	END COVER (L.H.)	
	MATERIAL	TRMTR.RF SWITCHING UNIT	
	WEIGHT PER PC.		
	TYPE & TEMPER	<i>E. Choy</i>	
		DRAWN	ELEC. DES. APP.
			MECH. DES. APP.
	HEAT TREAT. SPEC.		
		CHECKED	FINAL APPROVAL
	TMC. S101 & S107		
	FINISH & SPEC. NO.		

MODEL	PROJECT NO.	ASS'Y. NO.	DATE
	A-10063		29/7/55
USED ON			