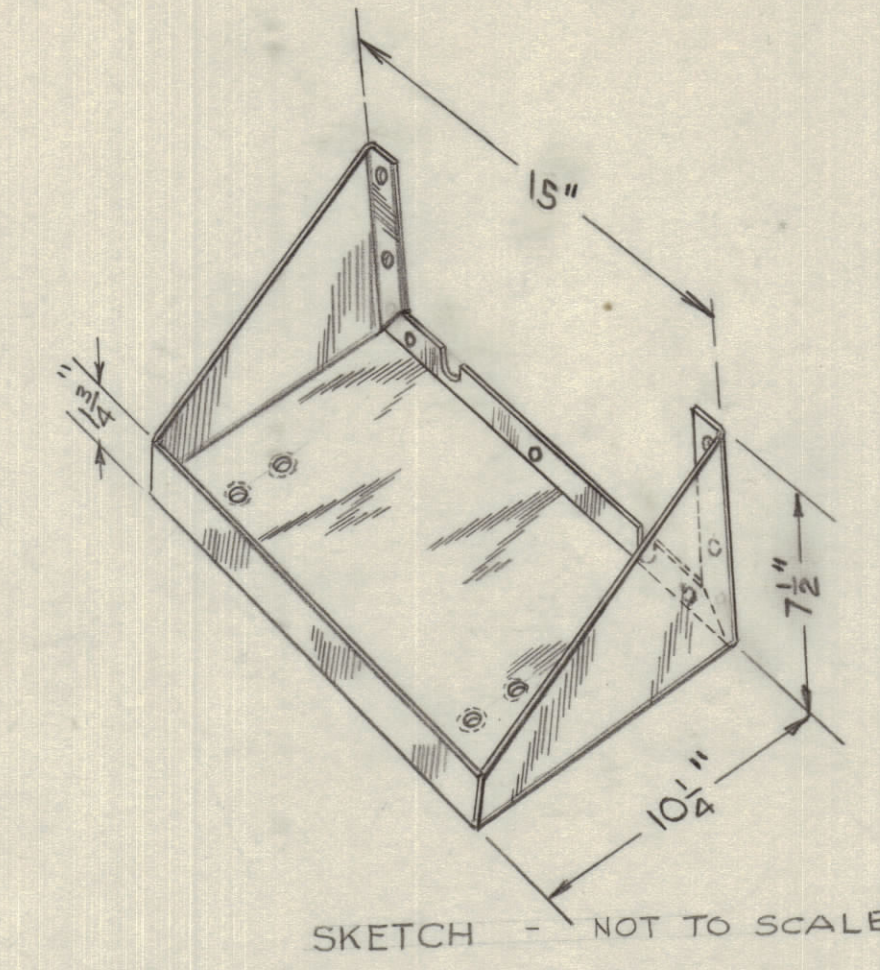
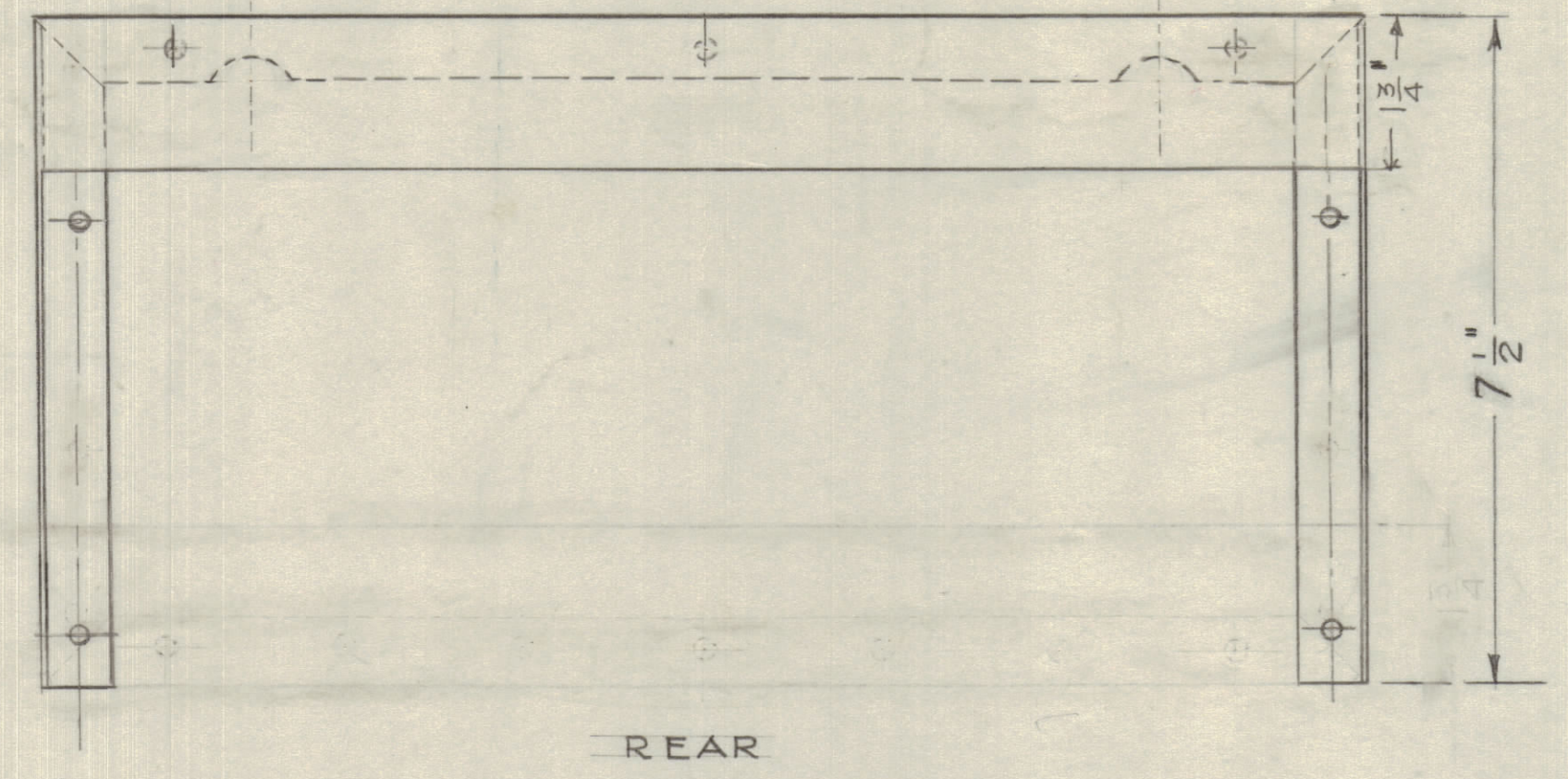


IF IT IS FOUND DESIRABLE TO CHANGE ANY TOLERANCE OR OTHER DETAIL SPECIFIED ON THIS DRAWING NOTIFY THE PURCHASER PROMPTLY.  
 MAXIMUM ALLOWABLE TOLERANCES HAVE BEEN DETERMINED AND DEVIATIONS WILL BE CAUSE FOR REJECTION. REMOVE ALL BURRS AND SHARP EDGES

NOTICE TO PERSONS RECEIVING THIS DRAWING

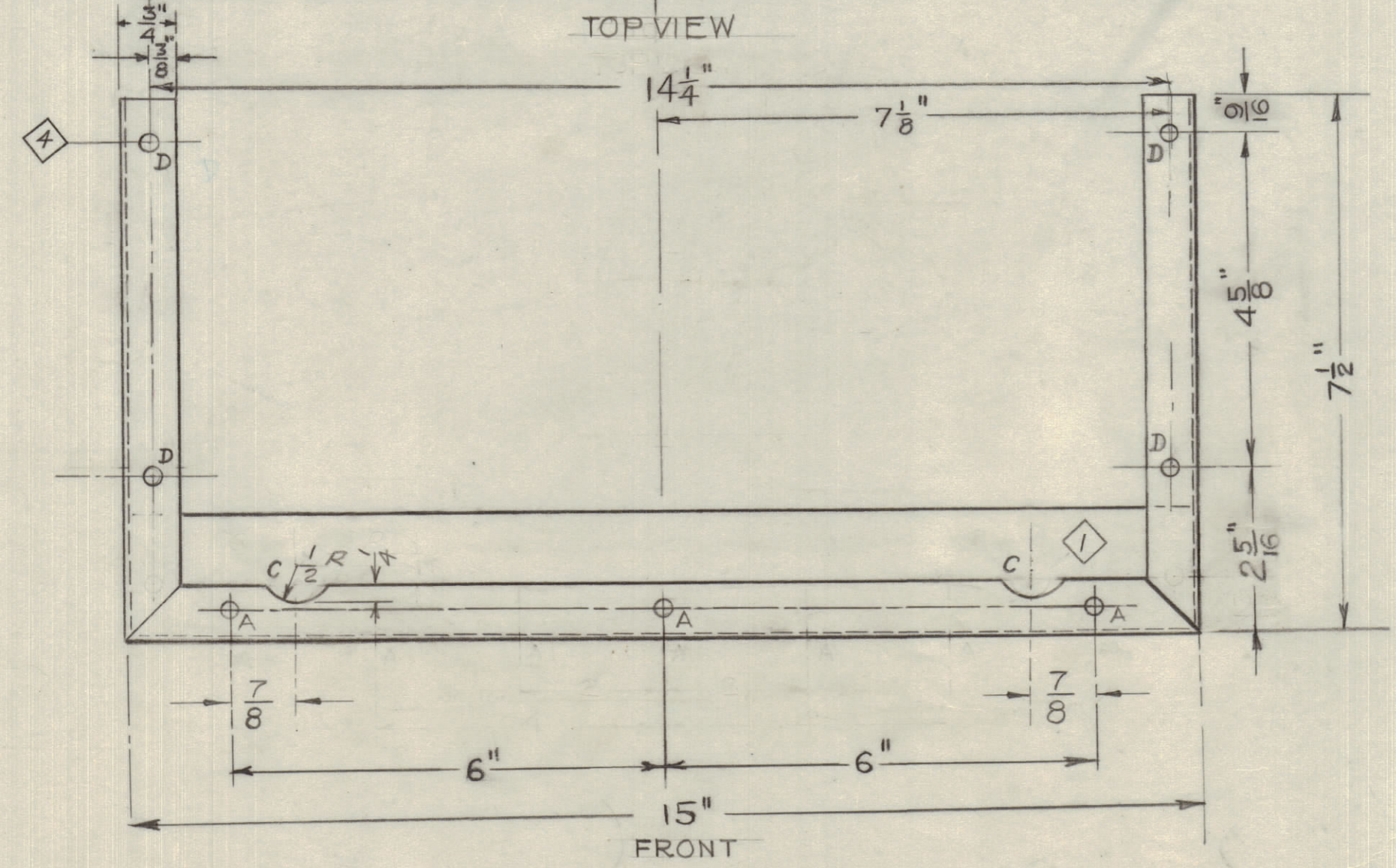
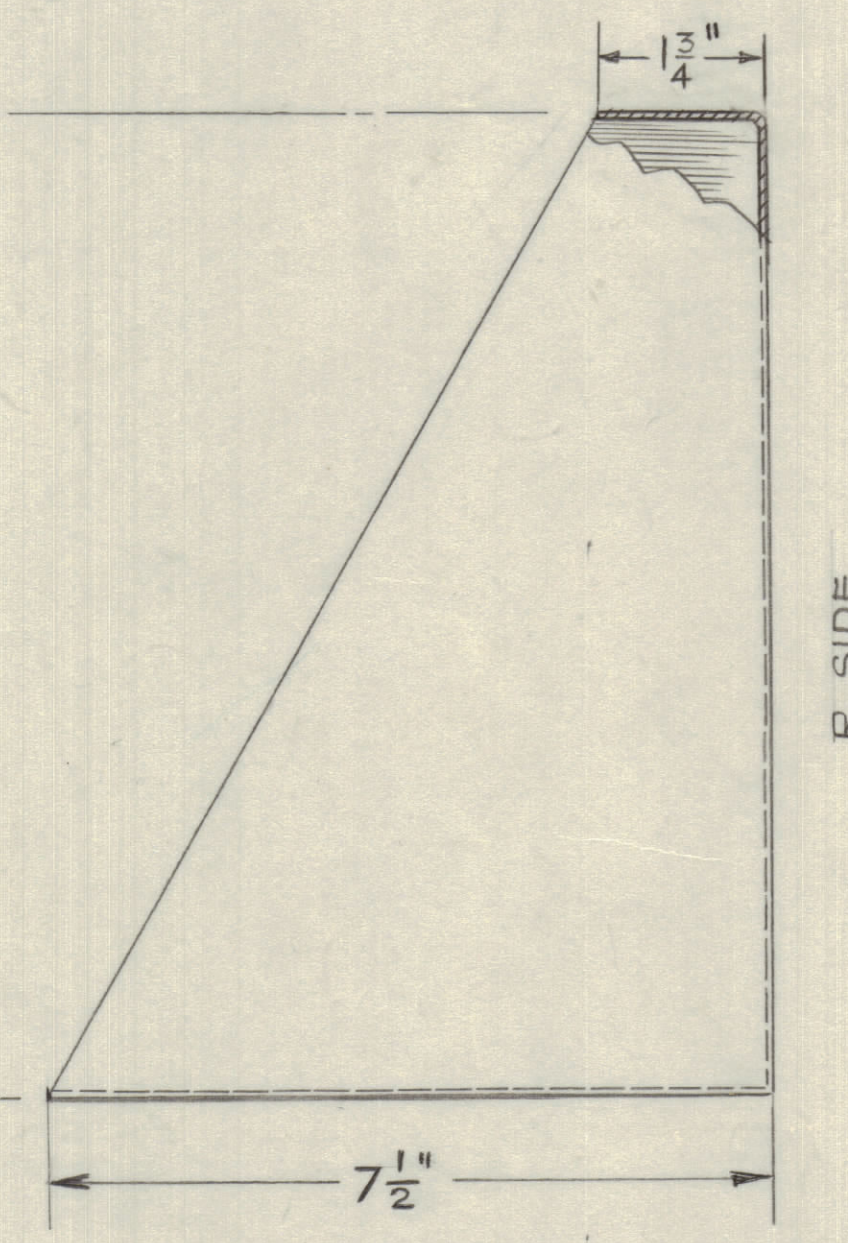
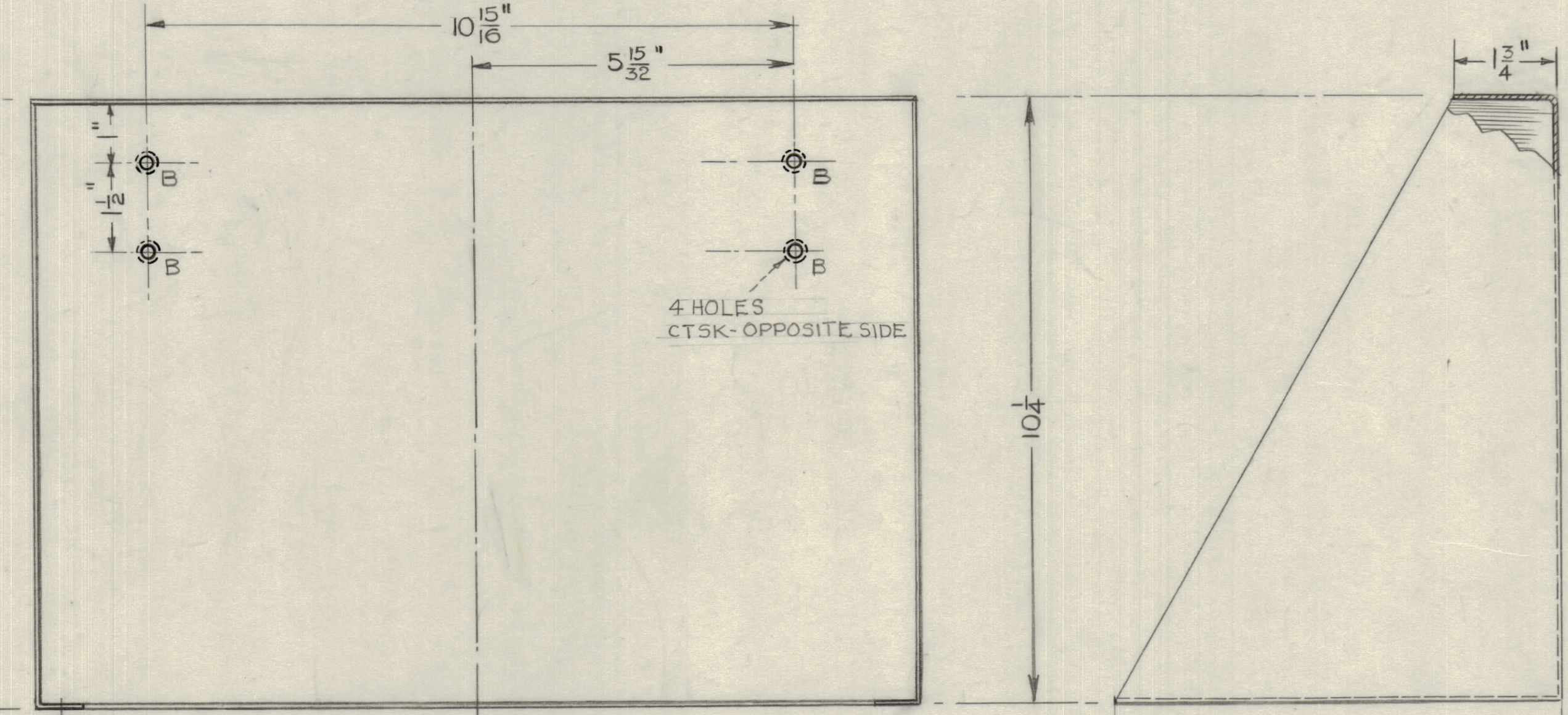
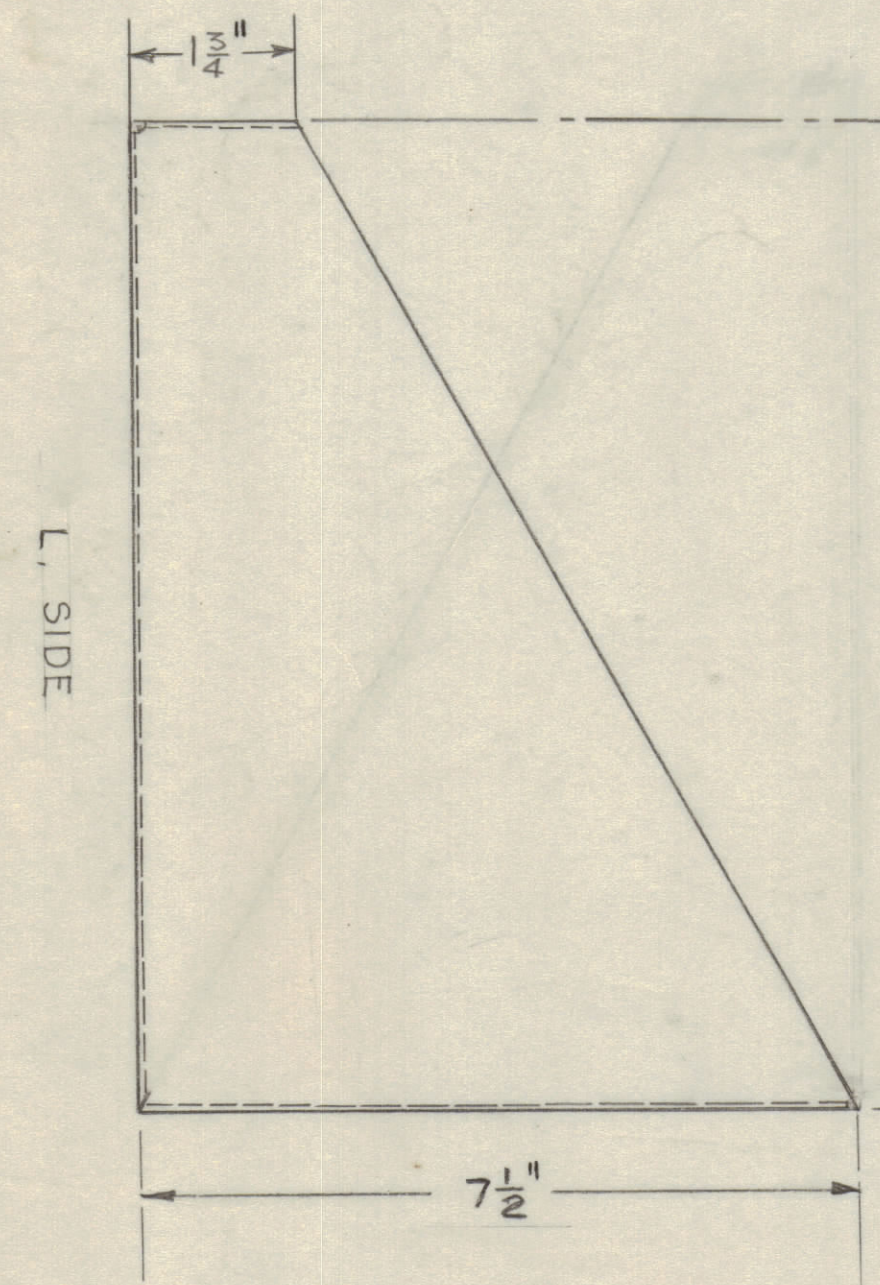
THE TECHNICAL MATERIEL CORPORATION claims proprietary right in the material disclosed hereon. This drawing is issued in confidence for engineering information only and may not be re-produced or used to manufacture anything shown hereon without permission from THE TECHNICAL MATERIEL CORPORATION to the user. This drawing is loaned for mutual assistance and is subject to recall at any time.

Property of:  
 THE TECHNICAL MATERIEL CORPORATION  
 MAMARONECK, NEW YORK



ALL SEAMS BRAZED WITH ALUMINUM BRAZING FLUX

- 2 - A HOLES 9/64 DIA 3 REQ'D
- 3 - B HOLES DRILL FOR 10-32 BH. SCREW 4 REQ'D
- 1 - C - 1" DIA, PUNCH FOR 1/2" R - 2 REQ'D.
- 4 - D HOLES DRILL FOR 8-32 SCREW 4 REQ'D



4	D HOLES WERE A HOLES				
3	B HOLES CTSK 12-24 MS. FH. - 4 REQ'D				
2	A HOLES 9/64 - 7 REQ'D				
1	1/2" R ADDED				
ISSUE	CHANGED FROM	DATE	CH. NO.	DRAFTS	CHECKER
TOLERANCES		SCALE: HALF SCALE			
ALL	DEC. DIM. ± 1/64	DRILL PUNCH, COMMERCIAL STOCK			
OTHERS	FRAC. DIM. ± 1/64	SIZES AND MANUFACTURERS			
	ANGULAR DIM. ± 1/2	TOLERANCES ARE NOT INCLUDED.			

REMOTE CONTROL TYPE AT3  
 REAR REF NO 100 1273

MAY 9<sup>th</sup> 1952

MODEL	PROJECT NO.	ASSY. NO.	DATE

REQ. ITEM	PART NO.	DESCRIPTION	SYMBOL
1064 SHEET		TMC (Canada) LIMITED	
STOCK SIZE		OTTAWA ONTARIO	
ALUMINUM		CHASSIS - SUPPORTING	
MATERIAL	WEIGHT PER PC.	REMOTE CONTROL TYPE AT3	
573-1/2 HARD			
TYPE & TEMPER		EWBG	
		DRAWN	
		ELEC. DES. APP.	
		CHECKED	
HEAT TREAT. SPEC.			
TMC 5101 & 5107			
FINISH & SPEC. NO.			

MS-10160 A

MS 10160 A