

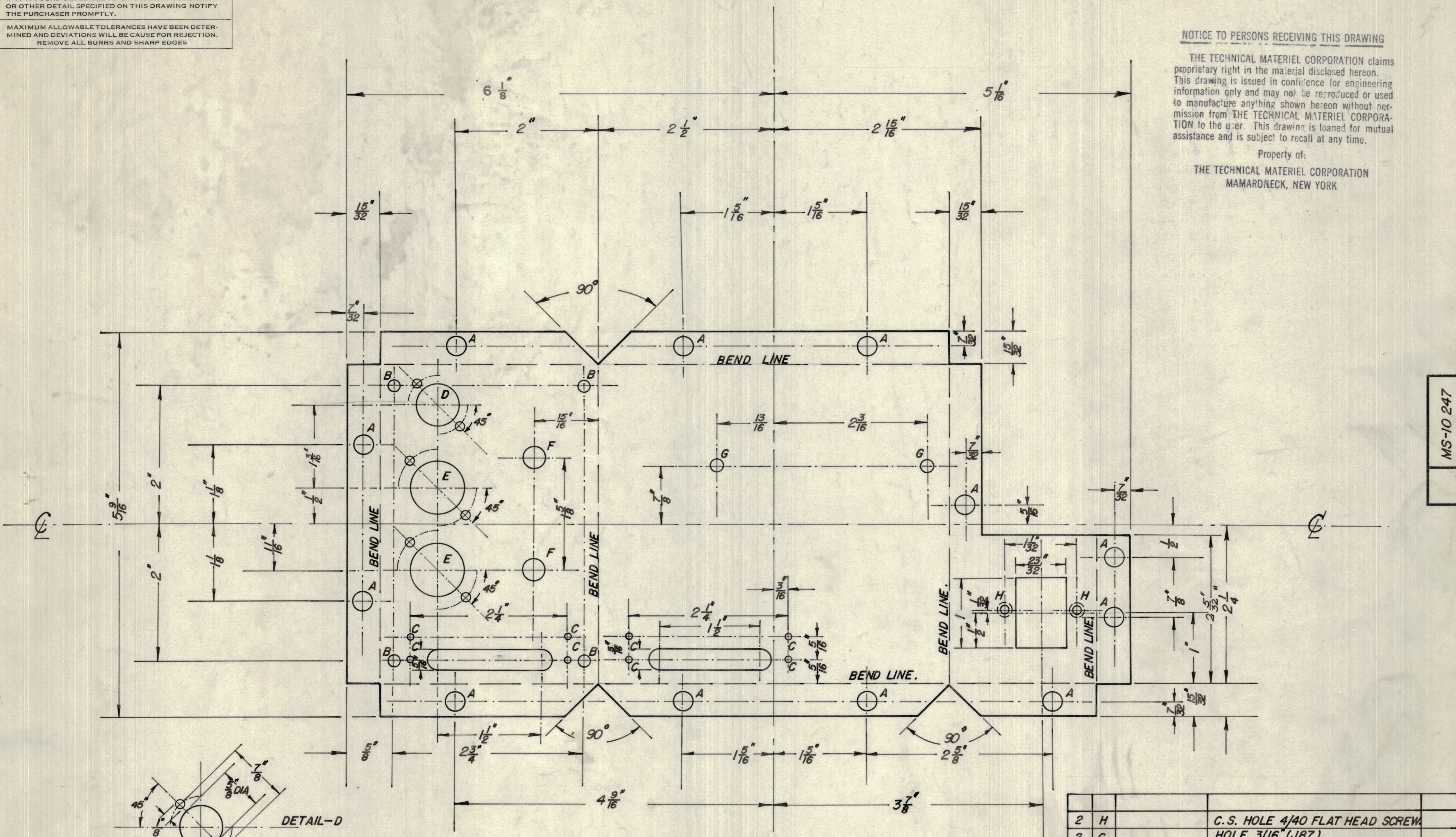
IF IT IS FOUND DESIRABLE TO CHANGE ANY TOLERANCE OR OTHER DETAIL SPECIFIED ON THIS DRAWING NOTIFY THE PURCHASER PROMPTLY.

MAXIMUM ALLOWABLE TOLERANCES HAVE BEEN DETERMINED AND DEVIATIONS WILL BE CAUSE FOR REJECTION. REMOVE ALL BURRS AND SHARP EDGES

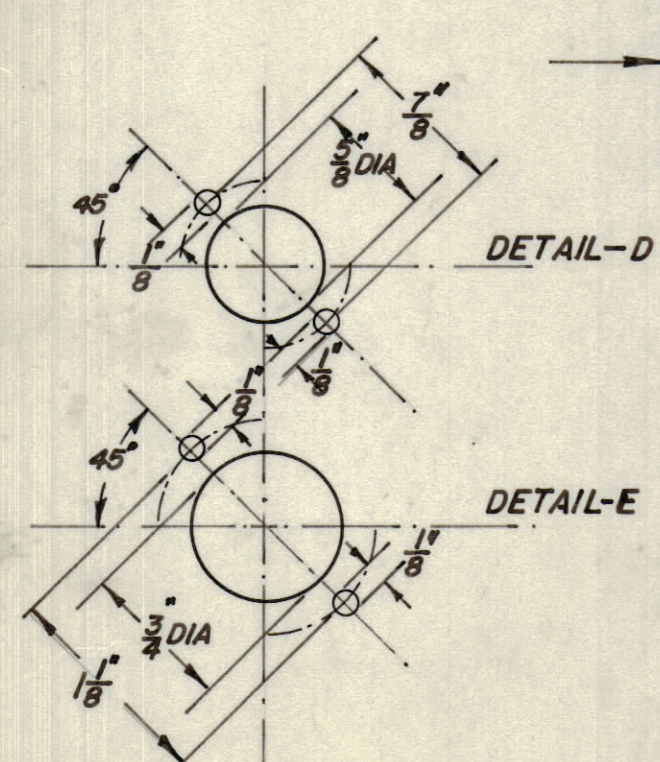
**NOTICE TO PERSONS RECEIVING THIS DRAWING**

THE TECHNICAL MATERIEL CORPORATION claims proprietary right in the material disclosed hereon. This drawing is issued in confidence for engineering information only and may not be reproduced or used to manufacture anything shown hereon without permission from THE TECHNICAL MATERIEL CORPORATION to the user. This drawing is loaned for mutual assistance and is subject to recall at any time.

Property of:  
THE TECHNICAL MATERIEL CORPORATION  
MAMARONECK, NEW YORK



MS-10 247



NOTE: ALL BENDLINES TO BE BENT UP AT 90° ANGLE.

REQ.	ITEM	PART NO.	DESCRIPTION	SYMBOL
2	H		C.S. HOLE 4/40 FLAT HEAD SCREWS	
2	G		HOLE 3/16" (.187)	
2	F		HOLE 13/32" (.406)	
8	C		HOLE 1/8" (.125)	
4	B		HOLE 11/64" (.171)	
12	A		HOLE 1/4" (.250)	

11-3/16" x 5-9/16" AL.		TMC (Canada) LIMITED OTTAWA ONTARIO	
.064 ALUMINUM.		MAIN CHASSIS FOR TTU. TONE TRANSMIT UNIT.	
TYPE & TEMPER		DRAWN	ELEC. DES. APP.
HEAT TREAT. SPEC.		CHECKED	FINAL APPROVAL
S-101 S-107		MS-10 247	

ISSUE	ITEM	CHANGED FROM	DATE	CN. NO.	DRAFTS	CHECKER	ENG. APP.
TOLERANCES							
SCALE:				DRILL, PUNCH, COMMERCIAL STOCK SIZES AND MANUFACTURERS TOLERANCES ARE NOT INCLUDED.			
ALL OTHERS	DEC. DIM. ±			FRAC. DIM. ±			
	ANGULAR DIM. ±						

MODEL	PROJECT NO.	ASS'Y. NO.	DATE
USED ON			