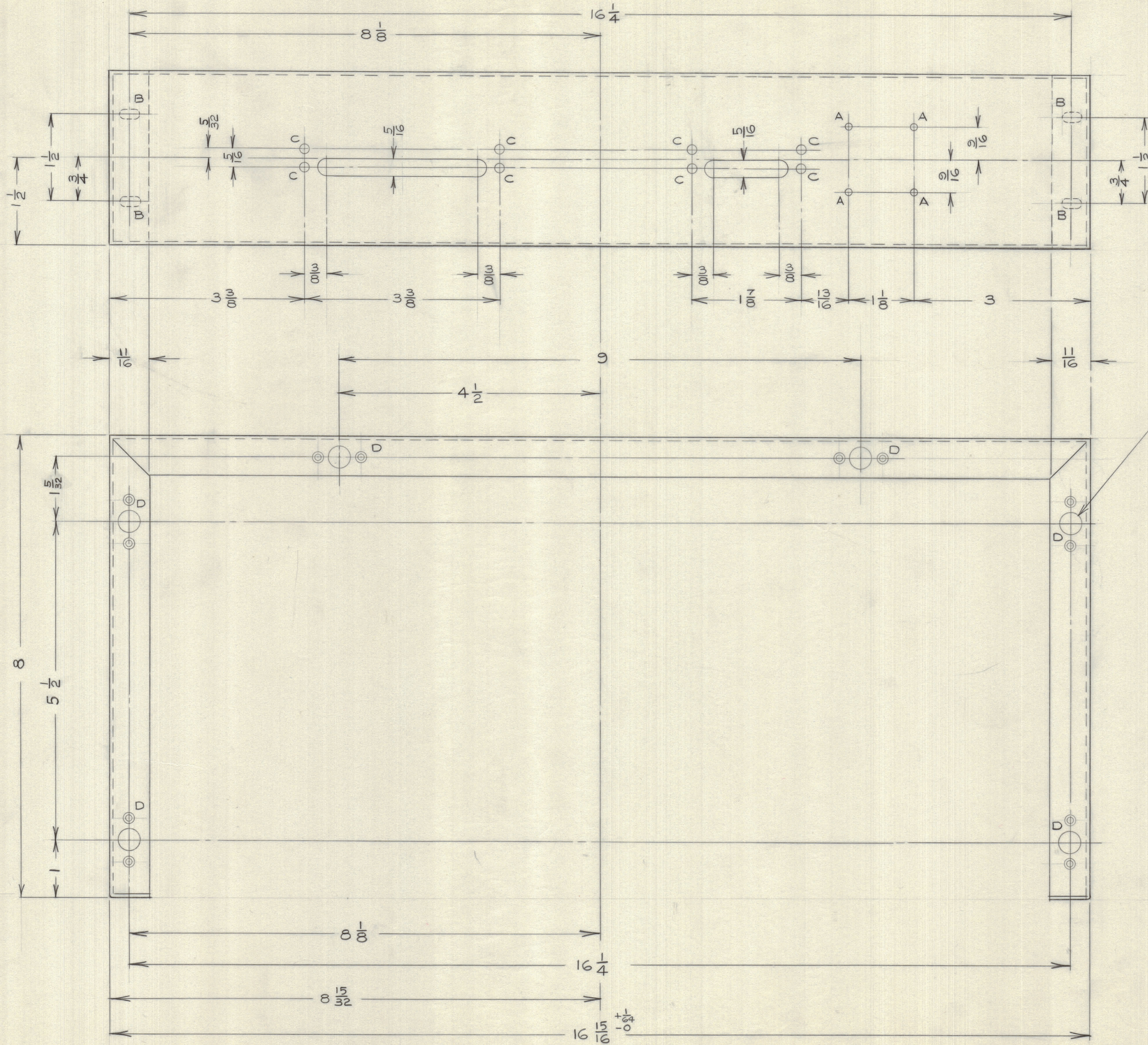


IF IT IS FOUND DESIRABLE TO CHANGE ANY TOLERANCE OR OTHER DETAIL SPECIFIED ON THIS DRAWING NOTIFY THE PURCHASER PROMPTLY.
 MAXIMUM ALLOWABLE TOLERANCES HAVE BEEN DETERMINED AND DEVIATIONS WILL BE CAUSE FOR REJECTION.
 REMOVE ALL BURRS AND SHARP EDGES

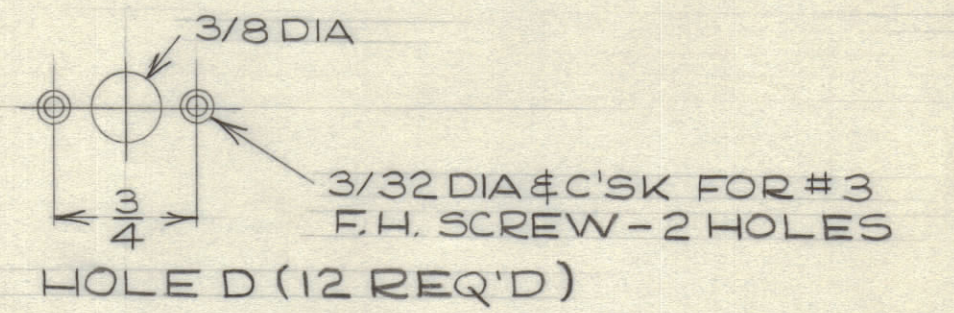
NOTICE TO PERSONS RECEIVING THIS DRAWING

THE TECHNICAL MATERIEL CORPORATION claims proprietary right in the material disclosed herein. This drawing is issued in confidence for engineering information only and may not be reproduced or used to manufacture anything shown herein without permission from THE TECHNICAL MATERIEL CORPORATION to the user. This drawing is loaned for mutual assistance and is subject to recall at any time.

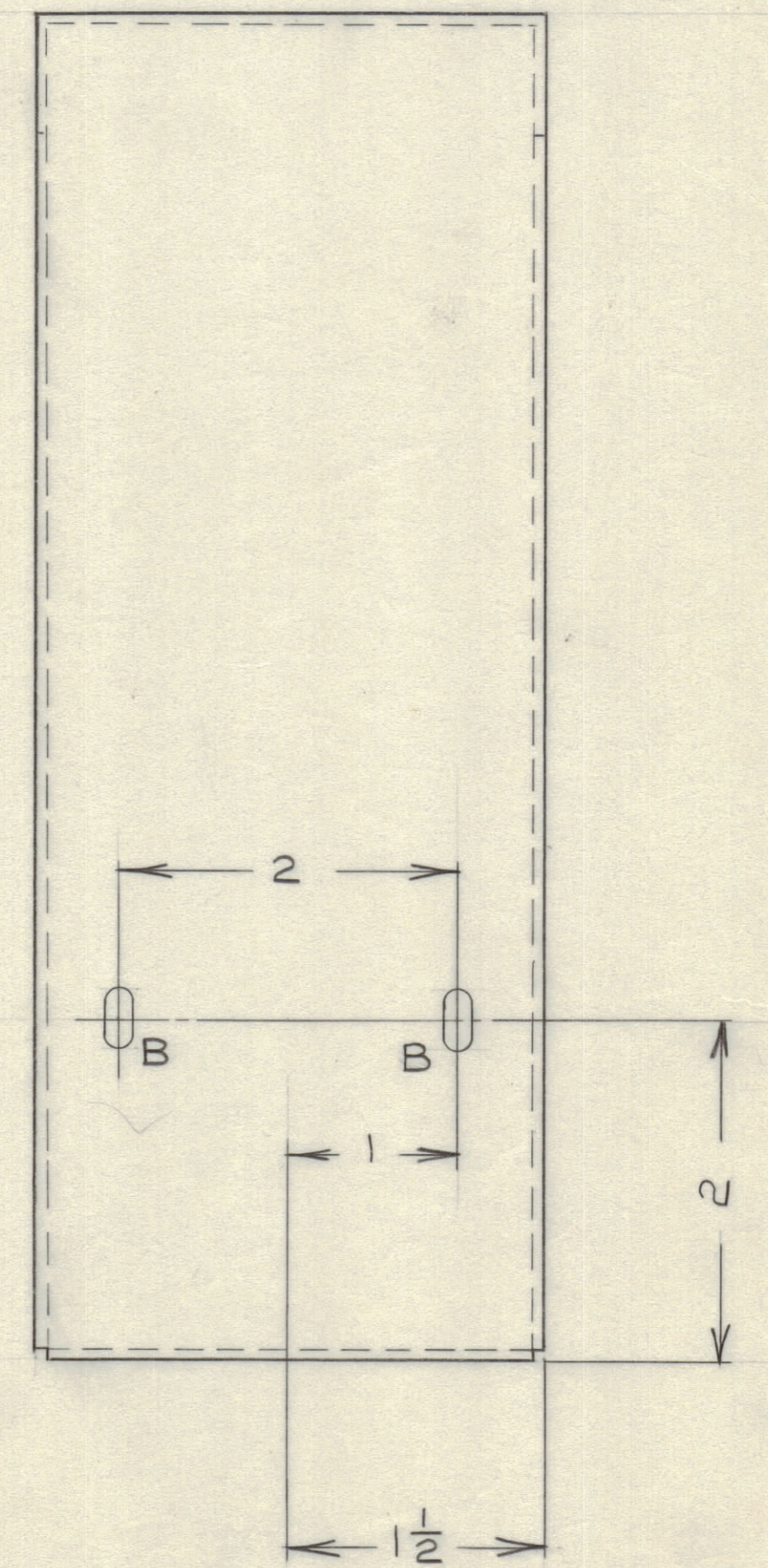
Property of:
 THE TECHNICAL MATERIEL CORPORATION
 MAMARONECK, NEW YORK



HOLE A - 1/8 DIA
 HOLE B - 11/64 X 11/32 SLOT
 HOLE C - 11/64 DIA



D HOLES FOR DZUS FASTENERS
 ALSO ON OPPOSITE FLANGES



MS10373

ISSUE	ITEM	CHANGED FROM	DATE	CN. NO.	DRAFTS	CHECKER	ENG. APP.
TOLERANCES							
ALL OTHERS		DEC. DIM. ± 1/64		FRAC. DIM. ± 1/64			
DRILL, PUNCH, COMMERCIAL STOCK		SIZES AND MANUFACTURERS TOLERANCES ARE NOT INCLUDED.					

TTF-2

NOV4/59

MODEL	PROJECT NO.	ASS'Y. No.	DATE

REQ. ITEM	PART NO.	DESCRIPTION	SYMBOL
14 GASHEET		TMC (Canada) LIMITED	
STOCK SIZE		OTTAWA ONTARIO	
ALUMINUM		CHASSIS	
MATERIAL	WEIGHT PER PC.	TTF-2	
TYPE & TEMPER		DCM	
DRAWN		1/2	MECH. DES. APP.
HEAT TREAT. SPEC.		CHECKED	FINAL APPROVAL
ETCH & IRIDITE			
FINISH & SPEC. NO.			MS10373