

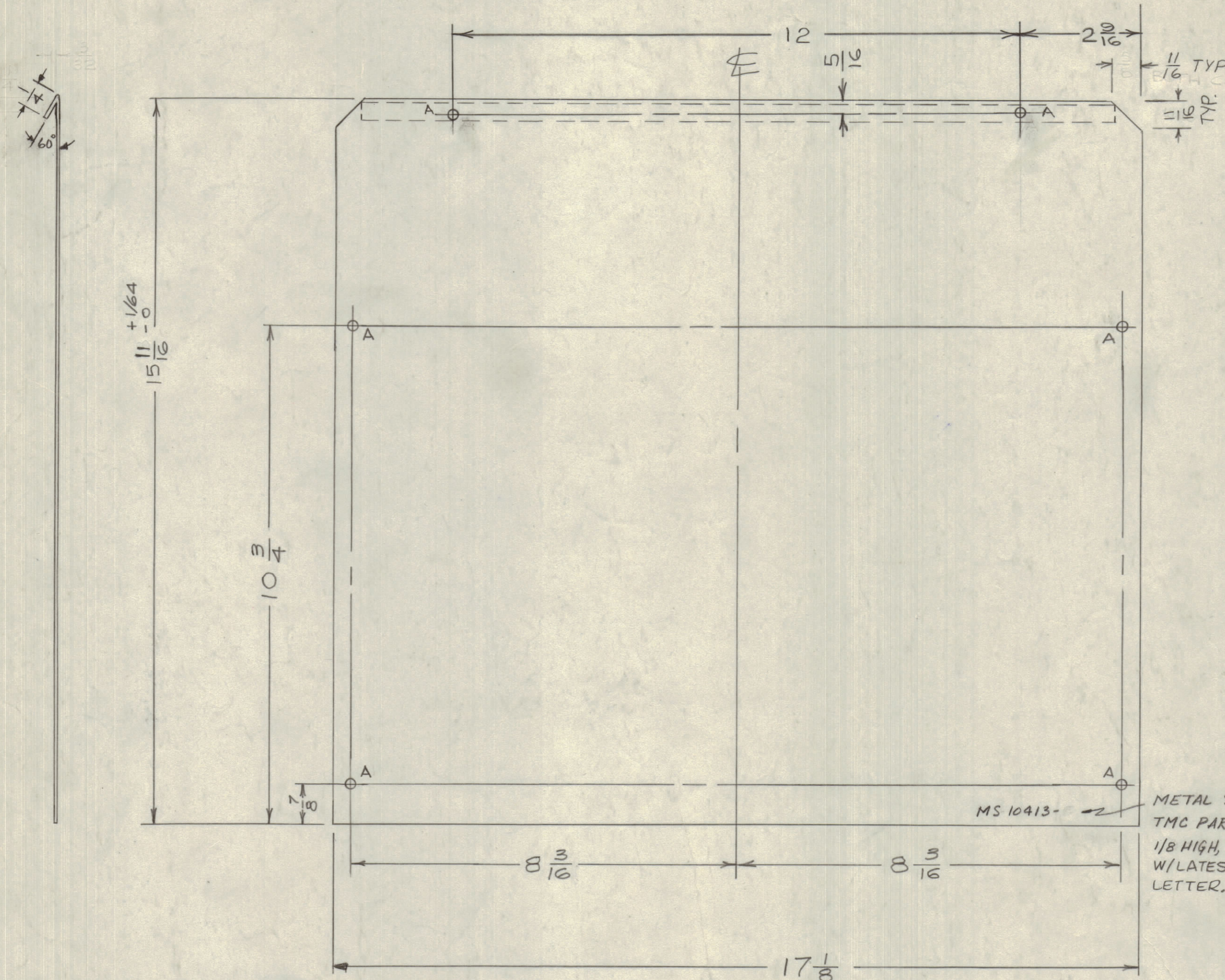
IF IT IS FOUND DESIRABLE TO CHANGE ANY TOLERANCE OR OTHER DETAIL SPECIFIED ON THIS DRAWING NOTIFY THE PURCHASER PROMPTLY.

MAXIMUM ALLOWABLE TOLERANCES HAVE BEEN DETERMINED AND DEVIATIONS WILL BE CAUSE FOR REJECTION. REMOVE ALL BURRS AND SHARP EDGES

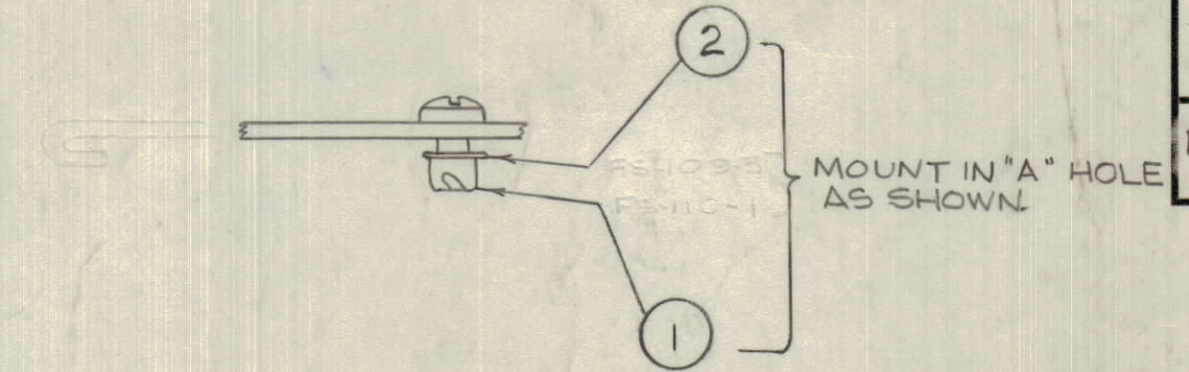
NOTICE TO PERSONS RECEIVING THIS DRAWING

THE TECHNICAL MATERIEL CORPORATION claims proprietary right in the material disclosed hereon. This drawing is issued in confidence for engineering information only and may not be reproduced or used to manufacture anything shown hereon without permission from THE TECHNICAL MATERIEL CORPORATION to the user. This drawing is loaned for mutual assistance and is subject to recall at any time.

Property of:
THE TECHNICAL MATERIEL CORPORATION
MAMARONECK, NEW YORK



A - 1/4 (.250) DIA.



NOTE: HARDWARE TO BE SUPPLIED AND ASSEMBLED BY TMC.

MS 10413 - METAL STAMP
TMC PART NO.
1/8 HIGH, GOTHIC
W/LATEST REV.
LETTER.

OBsolete
REPLACED BY MS 10412
10-23-62

MS10413 E

E	REV. CONFIG. OF LIP. ADDED NEW MODEL No.	1-9-67	17630	RME	JPC	JPC
D	LATEST REV. LET. NOTE IT, 1, 2 ADDED. 11/16 WAS 5/8, 15 1/16 WAS 15-13/16	9/16/65	14816	R.V.	JPC	JPC
C	1 OBSOLETE NOTE DELETED	12-6-62	7820	JPC	JPC	JPC
B	1 REPLACED BY MS-10412	10-23-62	7473	JPC	JPC	JPC
A	1 MS10413 WAS MS1251B	8/25/60		JPC	JPC	JPC

ISSUE	ITEM	CHANGED FROM	DATE	CN. NO.	DRAFTS	CHECKER	ENG. APP.
TOLERANCES		SCALE: 1/2					
ALL OTHERS	DEC. DIM. ± 1/64 FRAC. DIM. ± 1/64 ANGULAR DIM. ±	DRILL, PUNCH, COMMERCIAL STOCK SIZES AND MANUFACTURERS TOLERANCES ARE NOT INCLUDED.					

RFE-1	028/66	1.9.67
RFA-1	CE1095	8/24/60
MODEL	PROJECT No.	ASS'Y. No.
USED ON		

6 2	FS109-3	RING, RETAINING
6 1	FS110-1	STUD, TURNLOCK
REQ.	ITEM	PART No.
.051 TK.		STOCK SIZE
ALUM.		MATERIAL
5052 - H32		WEIGHT PER PC.
TYPE & TEMPER		JPC
HEAT TREAT. SPEC.		DRAWN
S101 CAUSTIC DIP		ELEC. DES. APP.
3404 IRIDITE		MECH. DES. APP.
FINISH & SPEC. No.		CHECKED
		FINAL APPROVAL
		MS10413 E