

IF IT IS FOUND DESIRABLE TO CHANGE ANY TOLERANCE OR OTHER DETAIL SPECIFIED ON THIS DRAWING NOTIFY THE PURCHASER PROMPTLY.

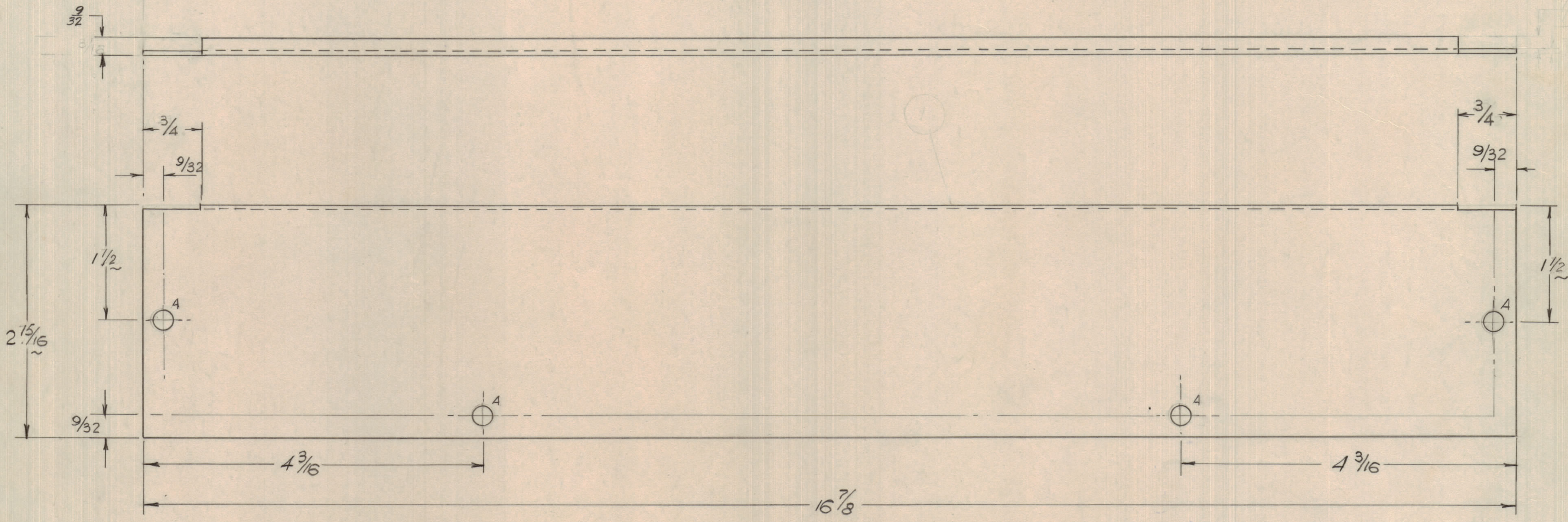
MAXIMUM ALLOWABLE TOLERANCES HAVE BEEN DETERMINED AND DEVIATIONS WILL BE CAUSE FOR REJECTION. REMOVE ALL BURRS AND SHARP EDGES

NOTICE TO PERSONS RECEIVING THIS DRAWING

THE TECHNICAL MATERIEL CORPORATION claims proprietary right in the material disclosed hereon. This drawing is issued in confidence for engineering information only and may not be reproduced or used to manufacture anything shown hereon without permission from THE TECHNICAL MATERIEL CORPORATION to the user. This drawing is loaned for mutual assistance and is subject to recall at any time.

Property of:

THE TECHNICAL MATERIEL CORPORATION
MAMARONECK, NEW YORK



USE MATERIAL THICKNESS FOR MAX. RADIUS ON ALL BENDS UNLESS OTHERWISE SPECIFIED.

MS-10476 A

HOLE SIZES	
A	1/4 DIA.

A	3	DELETED 1/8 DIM (TOP RIGHT)	DATE	CN. NO.	DRAFTS	CHECKER	ENG. APP.
	2	FINISH W/ST. TRIDITE, WITH TYP. RADIUS		8797			
	1	DIM 9/32 W/FS 9/16, BEND NOTE ADDED					
ISSUE ITEM		CHANGED FROM	DATE	CN. NO.	DRAFTS	CHECKER	ENG. APP.
TOLERANCES			SCALE: N.T.S.				
ALL OTHERS	DEC. DIM. ±	FRAC. DIM. ±	ANGULAR DIM. ±	DRILL, PUNCH, COMMERCIAL STOCK SIZES AND MANUFACTURERS TOLERANCES ARE NOT INCLUDED.			
		1/64					

PS-7	05307	22 AUG 1960	
MODEL	PROJECT No.	ASS'Y. No.	DATE

REQ. 2	ITEM MS-10476	PART No.	DESCRIPTION COVER, DUST	SYMBOL
STOCK SIZE		TMC (Canada) LIMITED OTTAWA ONTARIO		
MATERIAL ALUMINUM		COVER, DUST		
WEIGHT PER PC.		WH. DAVISON		
TYPE & TEMPER 57 SH 32		DRAWN U.K.		
HEAT TREAT. SPEC.		ELEC. DES. APP. 100		
FINISH & SPEC. No. S101 & S404		MECH. DES. APP.		
USED ON		CHECKED		
		FINAL APPROVAL		
		MS-10476 A		