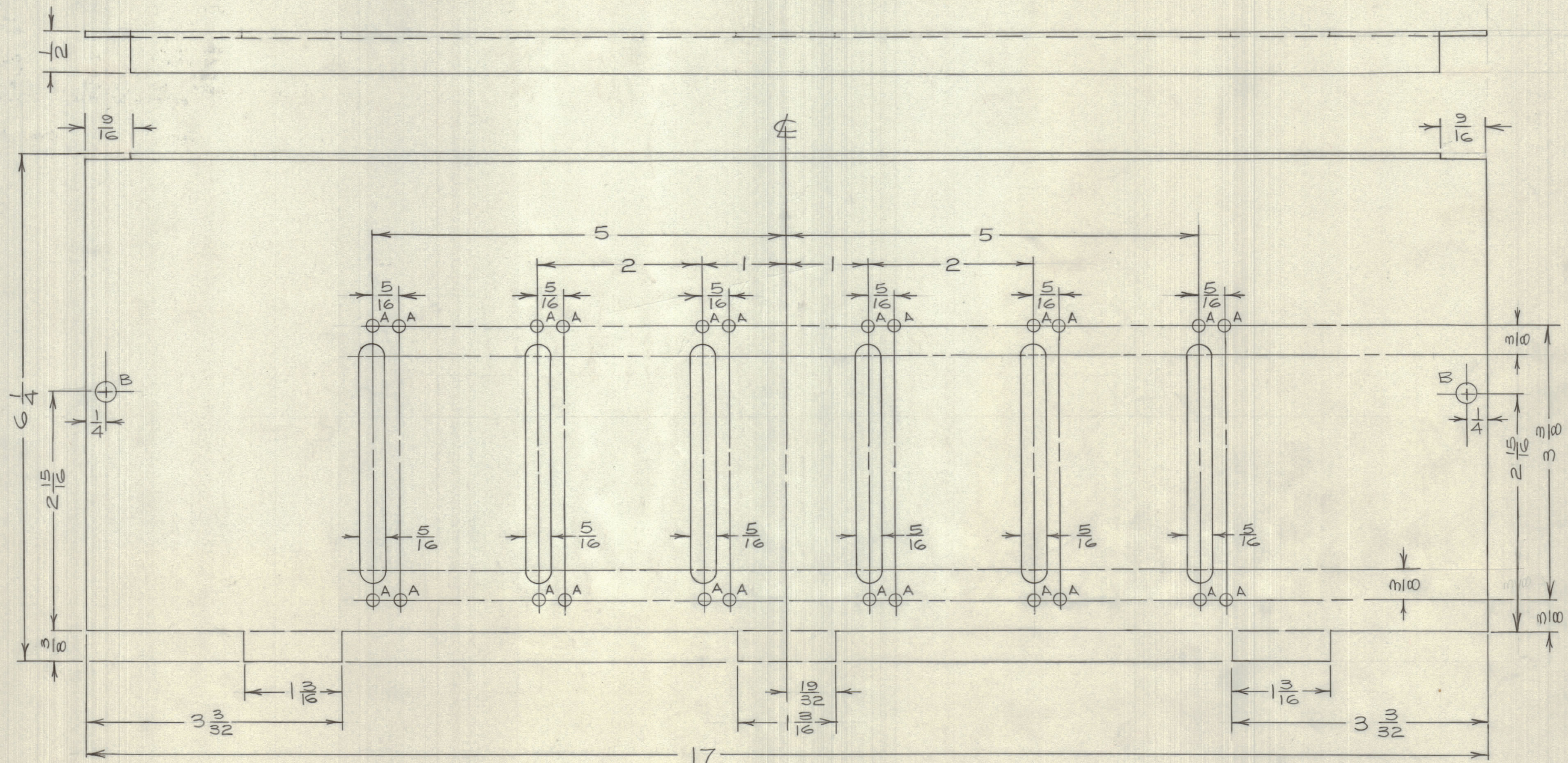


IF IT IS FOUND DESIRABLE TO CHANGE ANY TOLERANCE OR OTHER DETAIL SPECIFIED ON THIS DRAWING NOTIFY THE PURCHASER PROMPTLY.

MAXIMUM ALLOWABLE TOLERANCES HAVE BEEN DETERMINED AND DEVIATIONS WILL BE CAUSE FOR REJECTION. REMOVE ALL BURRS AND SHARP EDGES



HOLE A - 5/32 D.  
HOLE B - 1/4 D.

NOTE: AS SHOWN FOR MODEL CDCL - MS10483-1  
DELETE ALL HOLES EXCEPT HOLES B FOR MODEL CDCR - MS10483-2

**NOTICE TO PERSONS RECEIVING THIS DRAWING**

THE TECHNICAL MATERIEL CORPORATION claims proprietary right in the material disclosed hereon. This drawing is issued in confidence for engineering information only and may not be reproduced or used to manufacture anything shown hereon without permission from THE TECHNICAL MATERIEL CORPORATION to the user. This drawing is loaned for mutual assistance and is subject to recall at any time.

Property of:  
THE TECHNICAL MATERIEL CORPORATION  
MAMARONECK, NEW YORK

SEE NOTE CE5082

9/13/60

MODEL	PROJECT No.	ASS'Y. No.	DATE

REQ.	ITEM	PART No.	DESCRIPTION	SYMBOL
		.064 TK.	TMC (Canada) LIMITED	
		STOCK SIZE	OTTAWA ONTARIO	
		ALUM.	BACK PLATE	
		MATERIAL	CDCS-1	
		WEIGHT PER PC.	JPC	
		TYPE & TEMPER	DRWN	R.W. Thomas
		HEAT TREAT. SPEC.	ELEC. DES. APP.	MECH. DES. APP.
		S101CAUSTIC DIP	CHECKED	FINAL APPROVAL
		S404 IRIDITE		
		FINISH & SPEC. No.		MS10483

ISSUE	ITEM	CHANGED FROM	DATE	CN. NO.	DRAFTS	CHECKER	ENG. APP.

TOLERANCES		SCALE: 1:1
ALL OTHERS	DEC. DIM. ± 1/64 FRAC. DIM. ± 1/64 ANGULAR DIM. ±	DRILL, PUNCH, COMMERCIAL STOCK SIZES AND MANUFACTURERS TOLERANCES ARE NOT INCLUDED.

MS10483