

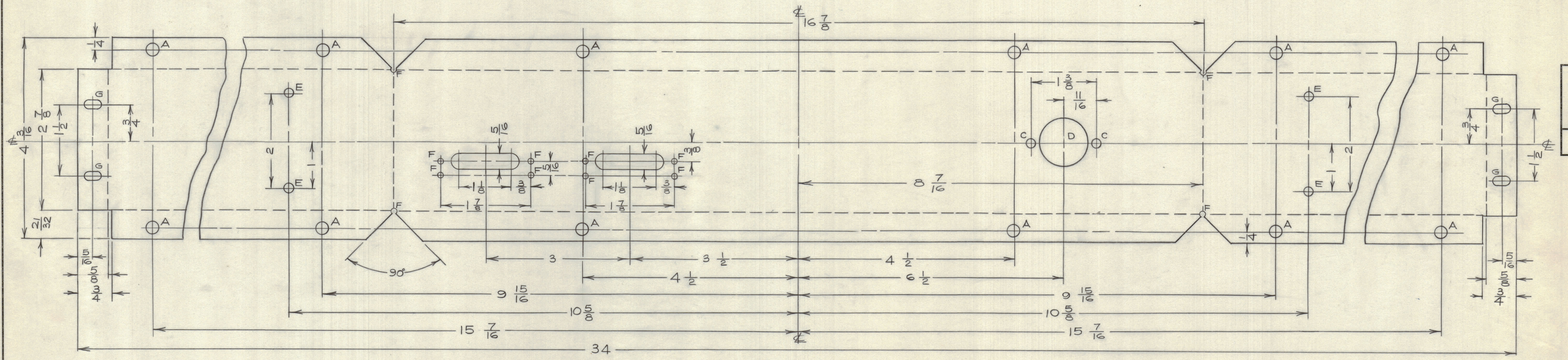
IF IT IS FOUND DESIRABLE TO CHANGE ANY TOLERANCE OR OTHER DETAIL SPECIFIED ON THIS DRAWING NOTIFY THE PURCHASER PROMPTLY.

MAXIMUM ALLOWABLE TOLERANCES HAVE BEEN DETERMINED AND DEVIATIONS WILL BE CAUSE FOR REJECTION. REMOVE ALL BURRS AND SHARP EDGES.

NOTICE TO PERSONS RECEIVING THIS DRAWING

THE TECHNICAL MATERIEL CORPORATION claims proprietary right in the material disclosed herein. This drawing is issued in confidence for engineering information only and may not be reproduced or used to manufacture anything shown hereon without permission from THE TECHNICAL MATERIEL CORPORATION to the user. This drawing is loaned for mutual assistance and is subject to recall at any time.

Property of:
 THE TECHNICAL MATERIEL CORPORATION
 MAMARONECK, NEW YORK



- HOLE A - 1/4 DIA.
- HOLE B - 5/32 DIA.
- HOLE C - 5/32 DIA.
- HOLE D - 1 DIA.
- HOLE E - 3/16 DIA.
- HOLE F - 1/8 DIA.
- HOLE G - 3/16 X 3/8 SLOT.

NOTE: BEND UP ON ALL DOTTED LINES TO 90°

ISSUE	ITEM	CHANGED FROM	DATE	CH. NO.	DRAFTS	CHECKER	ENG. APP.	
TOLERANCES								
ALL OTHERS	DEC. DIM. ±	FRAC. DIM. ±	ANGULAR DIM. ±	SCALE: NTS				DRILL, PUNCH, COMMERCIAL STOCK SIZES AND MANUFACTURERS TOLERANCES ARE NOT INCLUDED.

VCR-1 MOD CAN-1
 PROJECT NO. _____ ASS'Y. NO. _____ DATE: JAN. 12/61
 USED ON _____

REQ. ITEM	PART NO.	DESCRIPTION	SYMBOL
.064 TK.		TMC (Canada) LIMITED OTTAWA ONTARIO	
ALUM.		CHASSIS FOR VCR-1 MOD CAN-1.	
TYPE & TEMPER		JPC	
DRAWN		ELEC. DES. APP. <i>R.W. Jones</i>	MECH. DES. APP.
HEAT TREAT. SPEC.		CHECKED	FINAL APPROVAL
S101 & S404			MS10509
FINISH & SPEC. NO.			