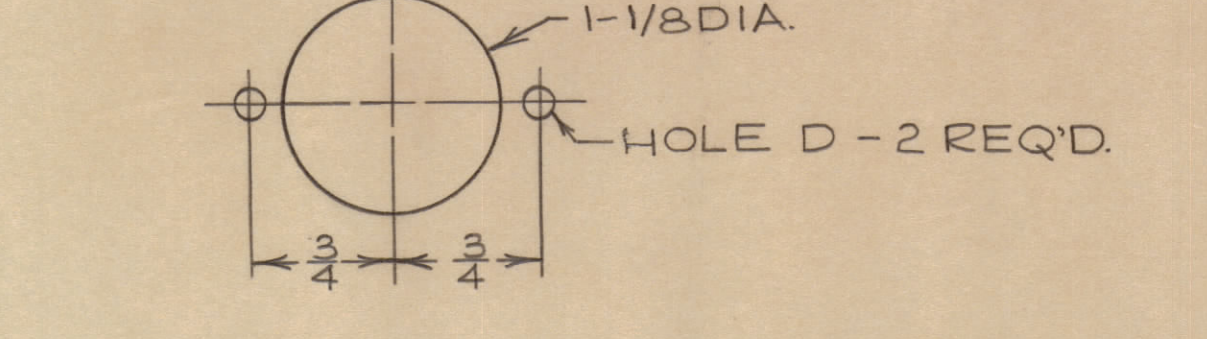
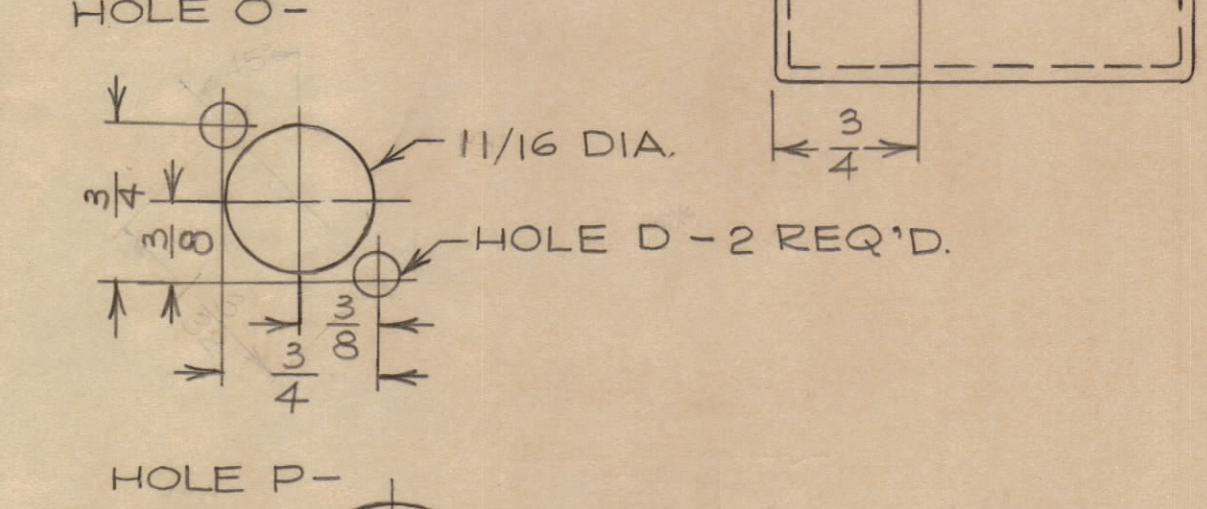
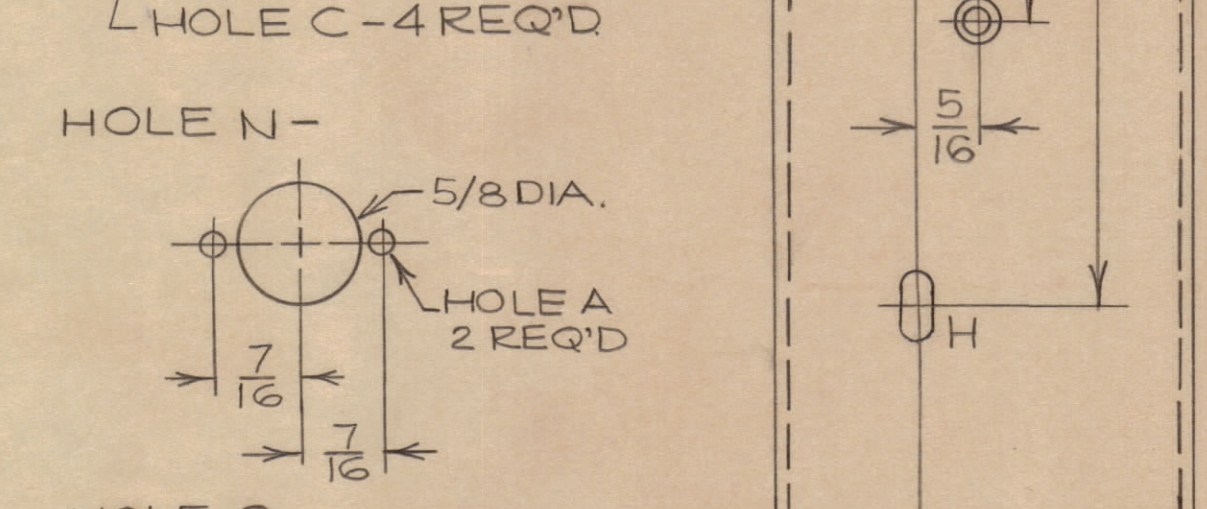
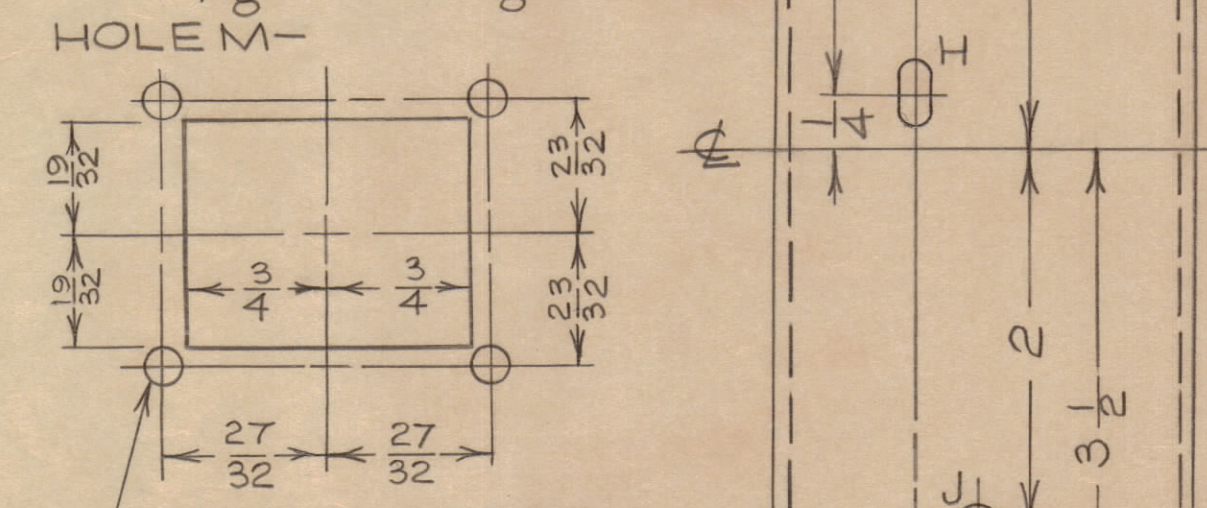
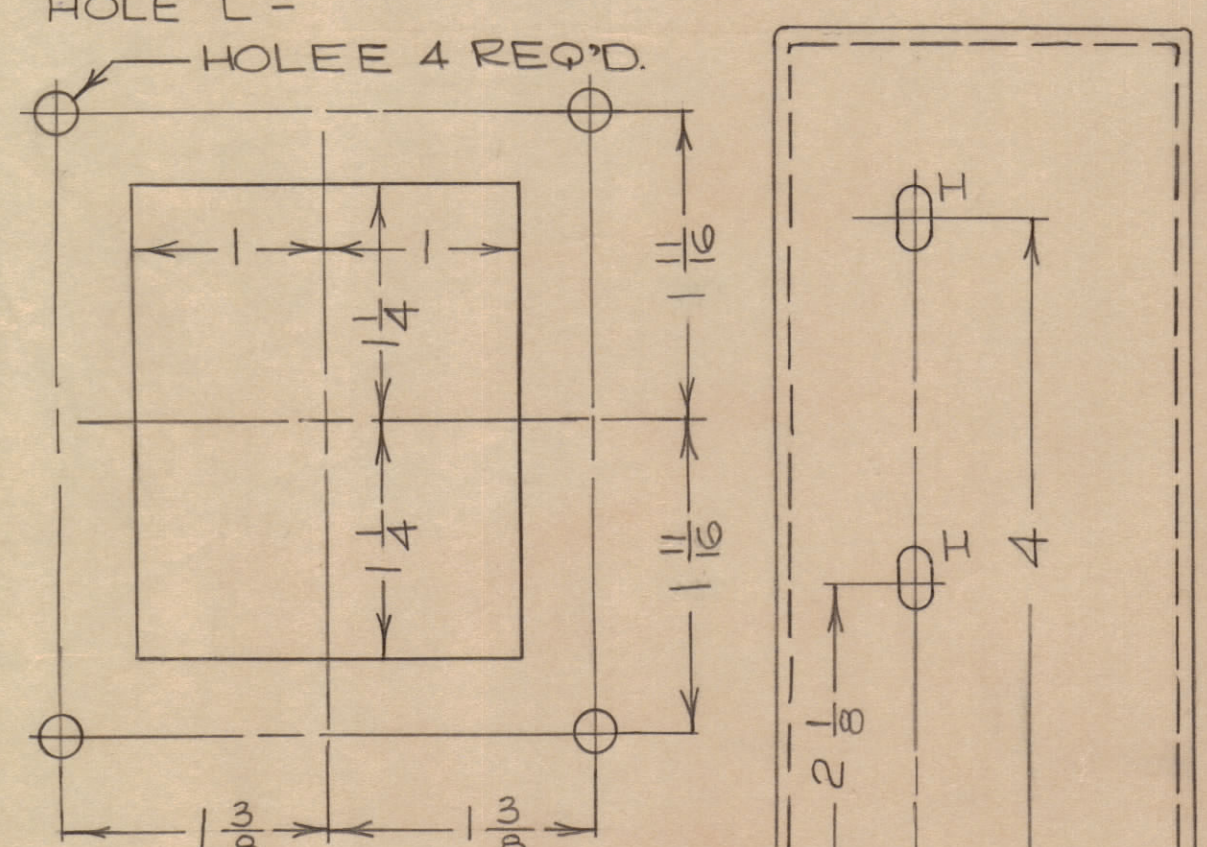
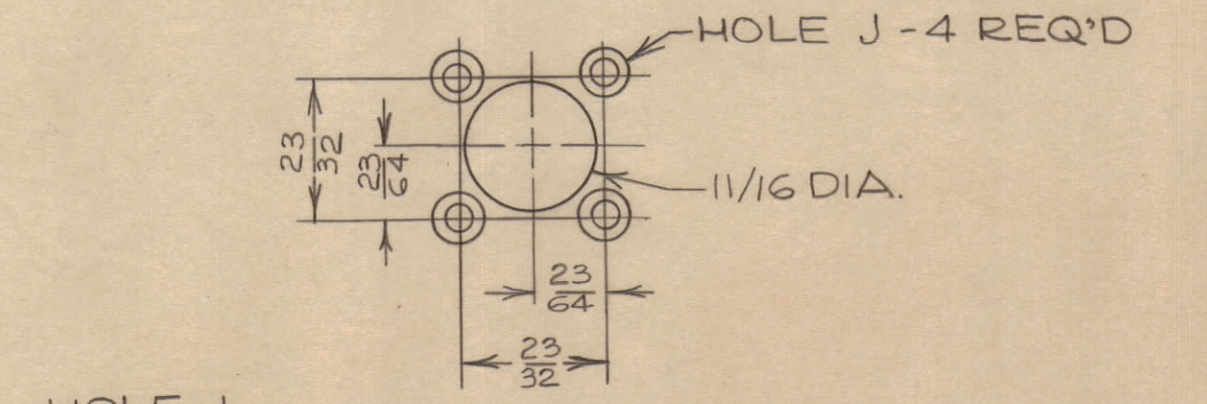
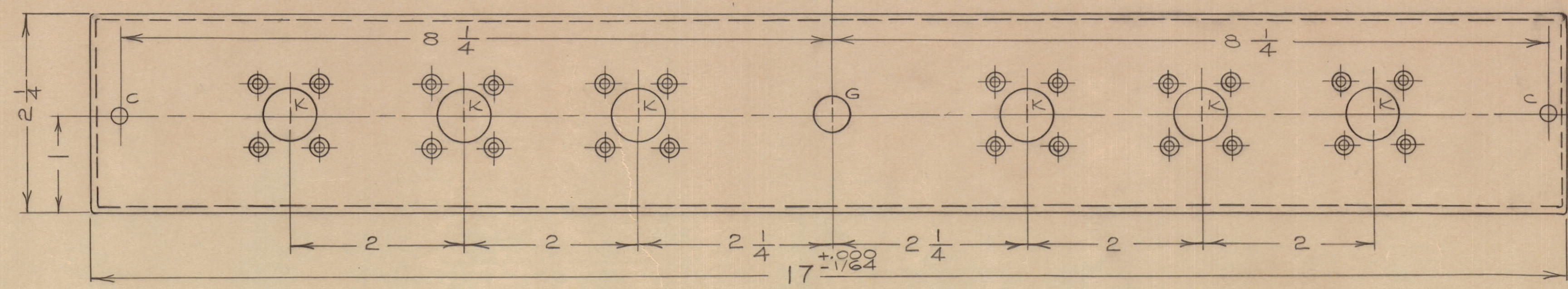
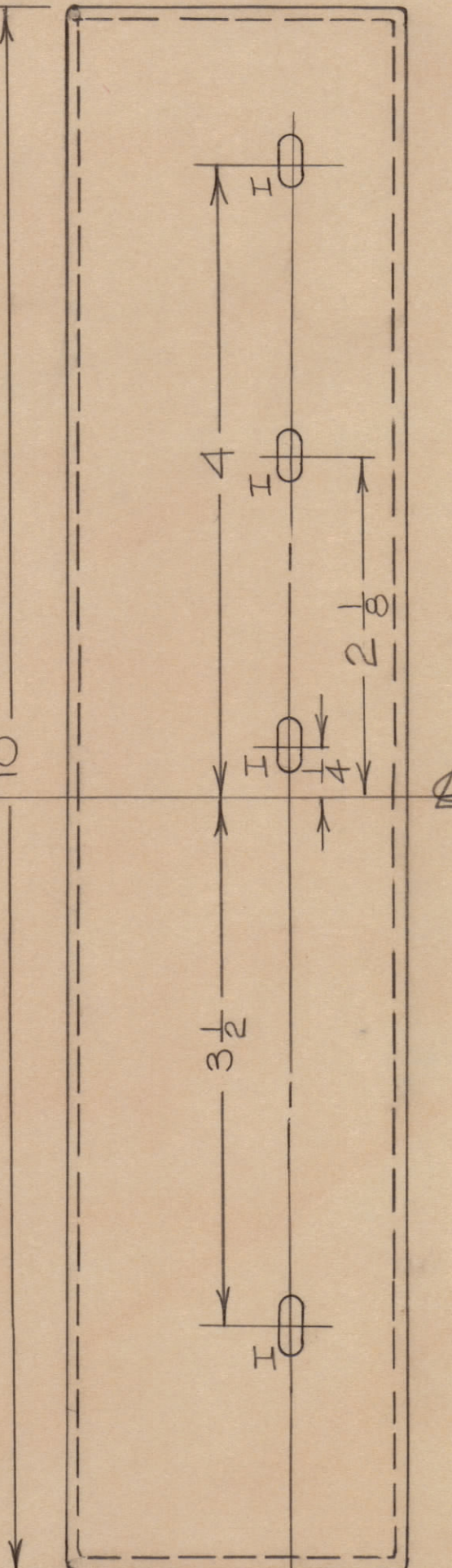
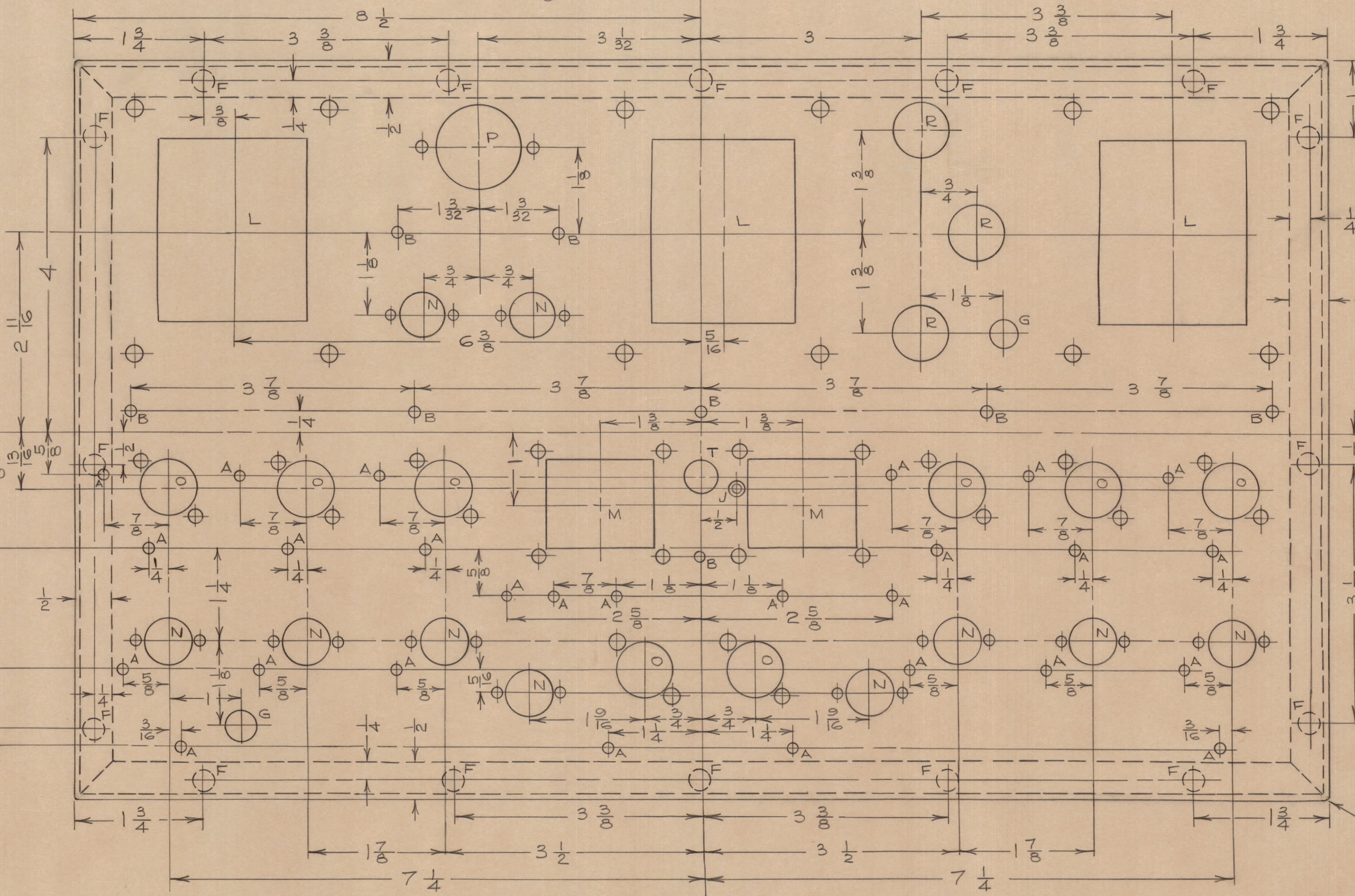
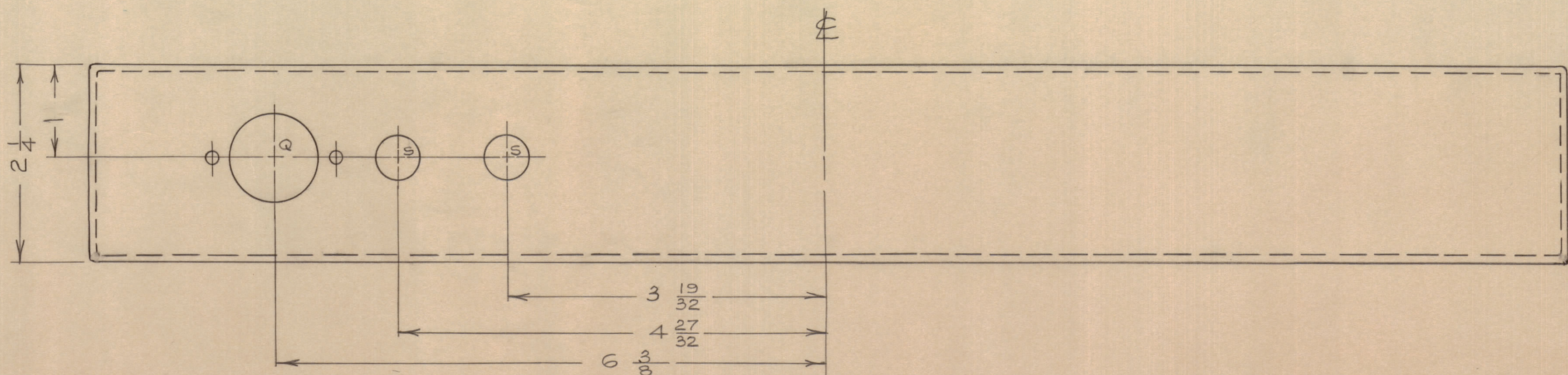
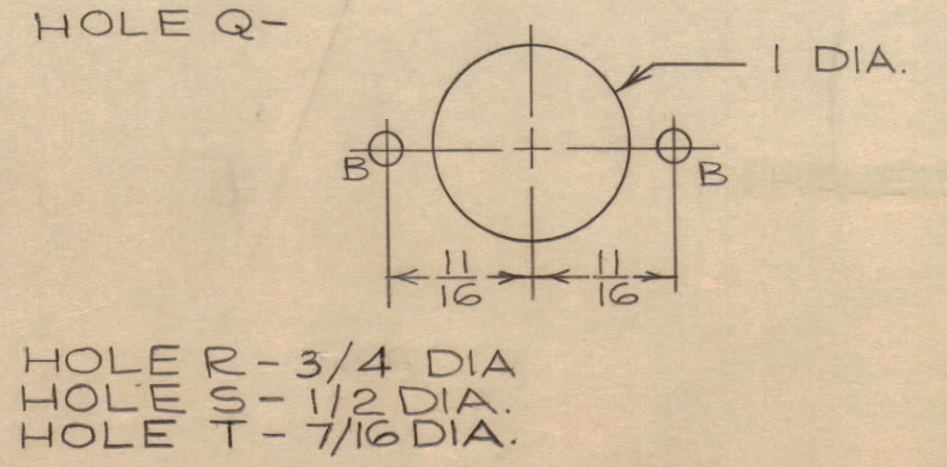


IF IT IS FOUND DESIRABLE TO CHANGE ANY TOLERANCE OR OTHER DETAIL SPECIFIED ON THIS DRAWING NOTIFY THE PURCHASER PROMPTLY.

MAXIMUM ALLOWABLE TOLERANCES HAVE BEEN DETERMINED AND DEVIATIONS WILL BE CAUSE FOR REJECTION. REMOVE ALL BURRS AND SHARP EDGES.

- HOLE A - 1/8 DIA.
- HOLE B - 9/64 DIA.
- HOLE C - 3/16 DIA.
- HOLE D - 1/4 DIA.
- HOLE E - 7/32 DIA.
- HOLE F - 1/4 DIA.
- HOLE G - 3/8 DIA.
- HOLE H - 1/32 X 1/64 SLOT
- HOLE I - 1/8 DRILL # CSK



WELD ON INTERSECTION OF EACH BEND LINE

REF: LD10152 - ST. 1 # 2.

ISSUE	DATE	CH. NO.	DRAFTER	CHECKER	ENG. APP.
A	MAY 29/61		JPC		
TOLERANCES					
SCALE: NTS					
DRILL, PUNCH, COMMERCIAL STOCK SIZES AND MANUFACTURERS TOLERANCES ARE NOT INCLUDED.					

AMC 6-2 PROJECT No. DATE FEB. 9/60

REQ. ITEM	PART No.	DESCRIPTION	SYMBOL
.064 TK.		TMC (Canada) LIMITED	
ALUM.		OTTAWA ONTARIO	
MATERIAL		CHASSIS AMC 6-2	
WEIGHT PER PC.			
TYPE & TEMPER		JPC	
DRAWN			
ELEC. DES. APP.			
MECH. DES. APP.			
HEAT TREAT. SPEC.			
CHECKED			
FINISH & SPEC. No.		MS10513 A	

MS10513 A