

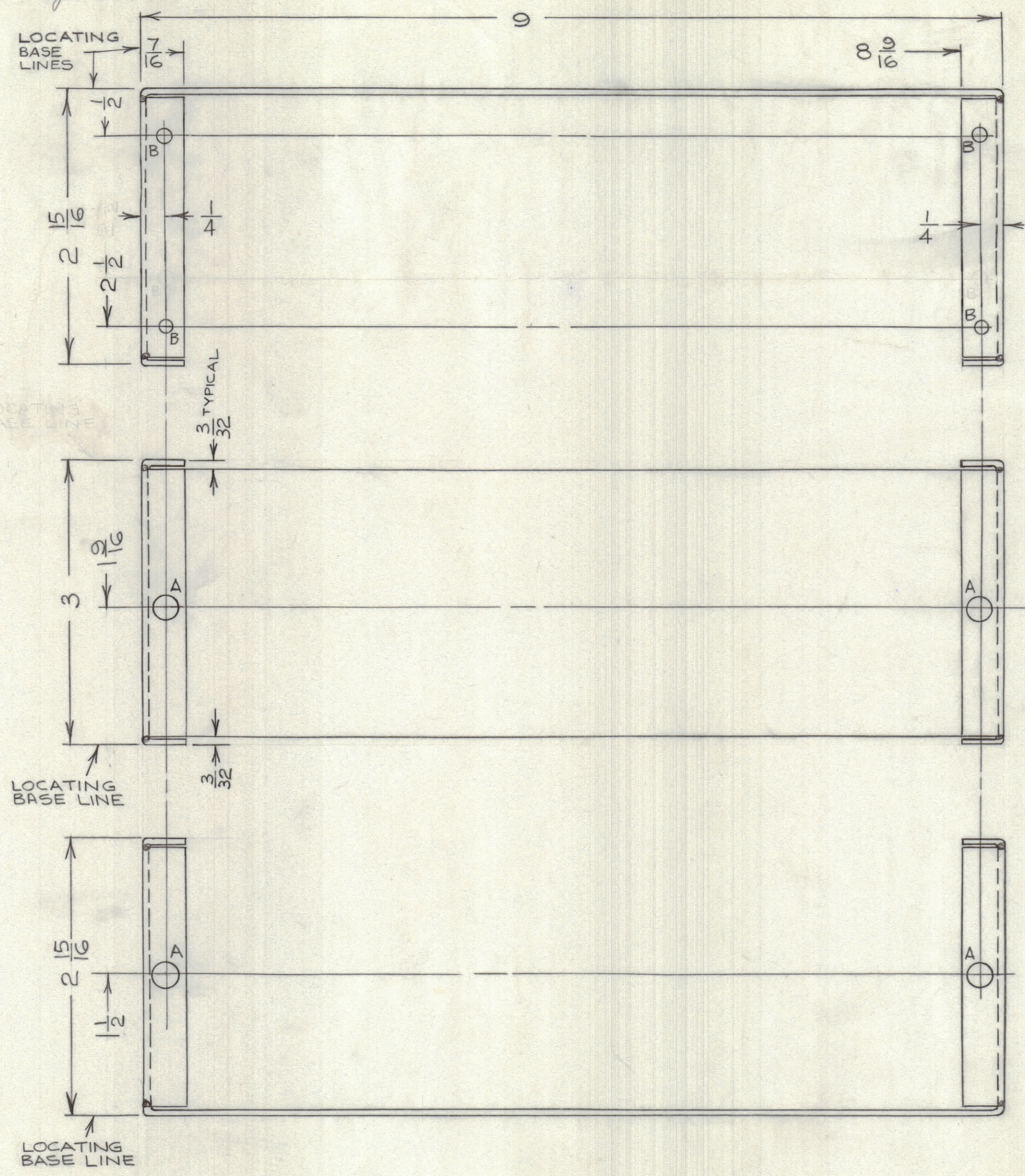
IF IT IS FOUND DESIRABLE TO CHANGE ANY TOLERANCE OR OTHER DETAIL SPECIFIED ON THIS DRAWING NOTIFY THE PURCHASER PROMPTLY.		DIMENSIONS IN INCHES UNLESS OTHERWISE SPECIFIED					
MAXIMUM ALLOWABLE TOLERANCES HAVE BEEN DETERMINED AND DEVIATIONS WILL BE CAUSE FOR REJECTION. REMOVE ALL BURRS AND SHARP EDGES.							
ISSUE	ITEM	CHANGED FROM	DATE	CN. NO.	DRAFTS	CHECKER	ENG. APP.
A		3/32 ADDED	6/20/61		JPC	J.C.	R.W.S.
B		2 1/2 WAS N.T.S.	10/29/61		JPC	J.C.	R.W.S.
C		HOLE "C" ADDED	SEPT 1/61		JPC	J.C.	R.W.S.

REQ.	ITEM	PART NO.	DESCRIPTION	SYMBOL
------	------	----------	-------------	--------

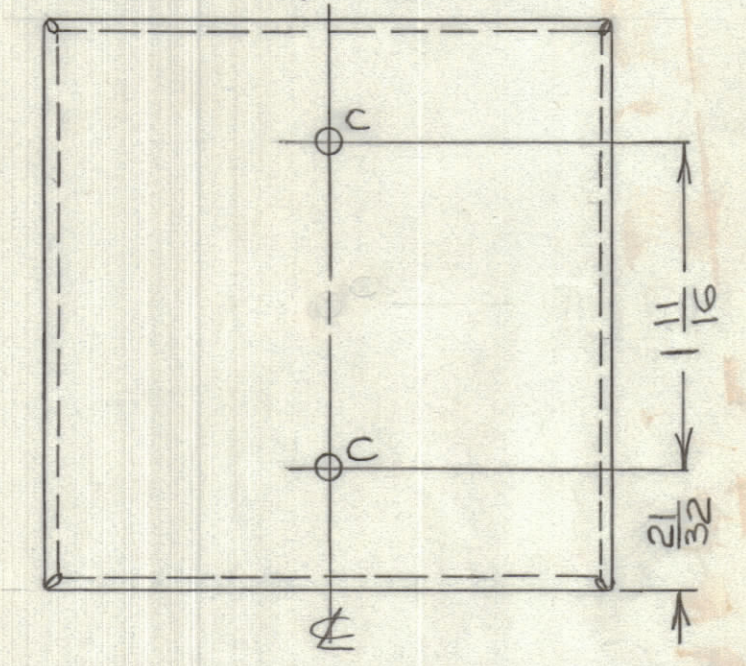
NOTICE TO PERSONS RECEIVING THIS DRAWING

THE TECHNICAL MATERIEL CORPORATION claims proprietary right in the material disclosed hereon. This drawing is issued in confidence for engineering information only and may not be reproduced or used to manufacture anything shown hereon without permission from THE TECHNICAL MATERIEL CORPORATION to the user. This drawing is loaned for mutual assistance and is subject to recall at any time.

Property of:
THE TECHNICAL MATERIEL CORPORATION
MAMARONECK, NEW YORK



HOLE C - 1/8 DIA.
HOLE A - 1/4 DIA.
HOLE B - 9/64 DIA.



MS10539 C

TOLERANCES	SCALE: 1:1
ALL OTHERS DEC. DIM. ± 1/64 FRAC. DIM. ± 1/64 ANGULAR DIM. ±	DRILL, PUNCH, COMMERCIAL STOCK SIZES AND MANUFACTURERS TOLERANCES ARE NOT INCLUDED.

AFU-1	E1143-P	MAY 31/61
MODEL	PROJECT NO.	DATE

54 SQ. IN.	TMC (Canada) LIMITED OTTAWA ONTARIO	
STOCK SIZE	SIDE PLATES & BOTTOM	
064AL. ST. 0.42 LBS.	ANTENNA FILTER UNIT	
MATERIAL	WEIGHT PER PC.	
57S-H32	JPC	R.W.S.
TYPE & TEMPER	DRWN	MECH. DES. APP.
	J.C.	M.C.
	CHECKED	FINAL APPROVAL
HEAT TREAT. SPEC.	MS10539 C	
S101 ETCH, S404 IRIDITE	FINISH & SPEC. NO.	